



City and Borough of Juneau
 City & Borough Manager's Office
 155 South Seward Street
 Juneau, Alaska 99801
 Telephone: 586-5240 | Facsimile: 586-5385

DATE: October 19, 2021
 TO: CBJ Assembly
 FROM: Robert Barr, Incident Commander
 RE: **Situational Update –Level 3 High**

Level 3 - High	The community is experiencing high case positivity. The Delta variant is present and community spread is occurring. Vaccine is available.	Local hospital case loads and staffing capacity have mostly stabilized, although there continue to be day-to-day spikes. Hospital capacity within in Alaska and in the Pacific Northwest remains significantly restricted.	Contact tracing remains difficult due to the high number of contacts per positive individual and the inability to get information from some positive individuals.	The Complete CBJ COVID-19 Dashboard can be found here or by going to Juneau.org/ COVID-19
-----------------------	---	--	---	--

Situation Assessment: The 14 and 7 day case rates remain elevated at the very high alert level. The Delta variant is driving case transmission locally and statewide. The community is urged to be cautious. Everyone regardless of vaccination status is now required to mask when indoors in public places. It is highly recommended that individuals limit social contact to mitigate disease spread and allow for effective contact tracing. Individuals should test immediately if they have even mild symptoms. **The single most effective strategy to mitigate COVID is to get vaccinated.**

Issues of Note:

Given case counts last week and over the long weekend, case activity has increased and perhaps plateaued rather than resumed the downward trend we were enjoying two weeks ago. The silver lining is that we appear to be seeing the benefit of lower case activity two weeks ago by reduced current strain on our hospital. Medevacs continue to be somewhat constrained. The monoclonal antibody clinic at BRH continues to go well with demand mostly in line with supply.

Planning for pediatric vaccination is ongoing. We expect the FDA to review pediatric vaccine recommendations on October 26th and the CDC to follow on or around November 2nd. We are planning to hold small vaccination clinics at elementary and middle schools once formal guidance is issued. We expect vaccine availability to be constrained at first. Right now, our best information is that we will initially receive enough vaccine for approximately 40% of our 5-11 year old population. Prioritization will be determined by the FDA/CDC in a similar manner as it was for adults.

Due to the smaller size/larger number of these clinics and the assumption that follow-up doses will be necessary 3-4 weeks after first doses, pediatric vaccination will pose a substantial staff/volunteer burden.

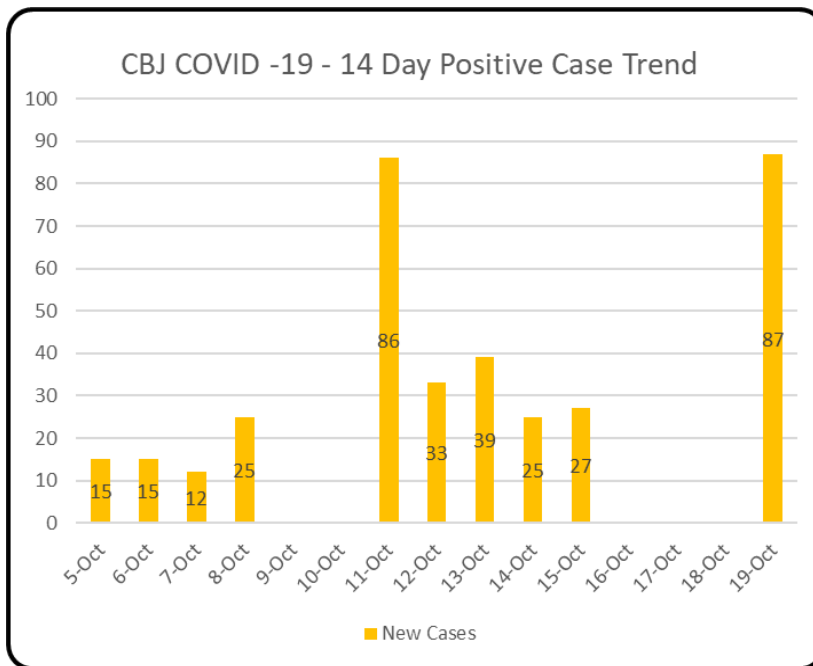
General Case Trends:

Juneau Public Health was able to report generalized case trends for the last 7 days:

- We have roughly 225 active cases
- Of those, approximately 75 are in individuals age 18 or younger and 55 are from individuals under 12.
- The age range of positive cases spans from under 1 to mid-90s.

Daily Numbers update: We are reporting 114 new resident cases since the last EOC report on October 14th (F-Tu).

Statewide, the Alaska Department of Health and Social Services reports [2,842](#) new people identified with COVID-19 in the past three days. The state also reports 66 new deaths bringing the total number of resident deaths to 659. Alaska has had 125,445 cumulative resident cases of COVID-19 and a total of 5,145 nonresidents.



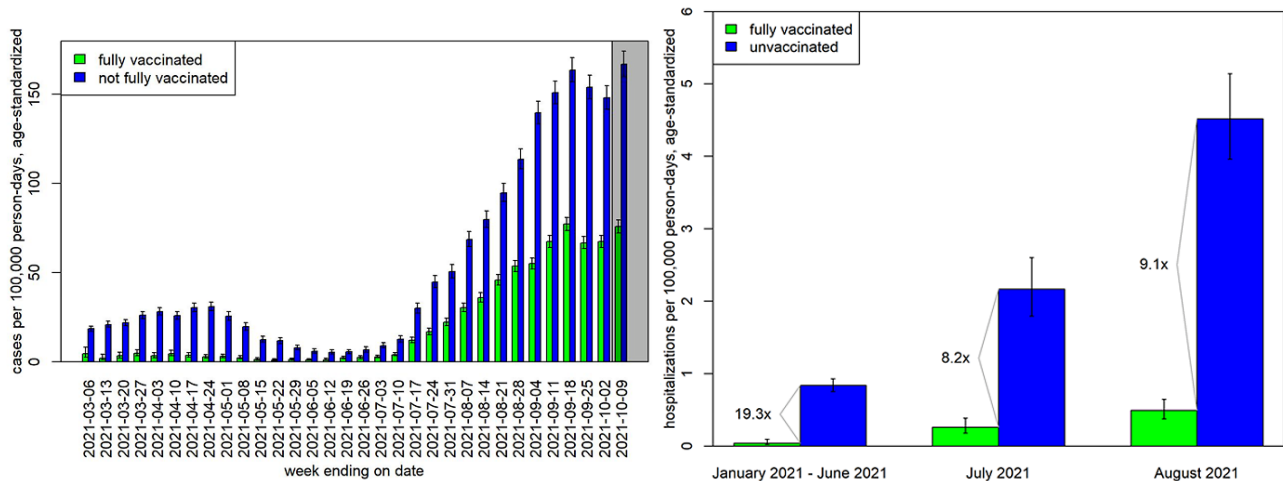
Weekly Summary – 14 day lookback for positive tests October 5th through October 19th

Over the last 14 days there have been 364 positive cases in Juneau. Elevated case counts statewide, precludes Public Health from providing more detailed information at the local level about case acquisition, age, race, or gender breakdown, or vaccine breakthrough data other than the estimates above.

Breakthrough Cases: Vaccine breakthrough (VB) infections of COVID are those detected in a person who is at least 2 weeks beyond their second dose of a 2-dose series or the only dose of a 1-dose series.

From January 16–October 9, 2021, 48 deaths, 193 hospitalizations, and 15,330 cases with a VB infection were reported among Alaska residents aged ≥12 years. These counts are provisional and subject to change as data are compiled and reviewed. In that same time frame, a total of 57,745 cases, 1,358 hospitalizations, and 278 deaths were reported.

73% of all cases, 86% of all hospitalizations, and 83% of deaths among Alaska residents aged ≥12 years from January 16–October 9, 2021 were in people who were not fully vaccinated.

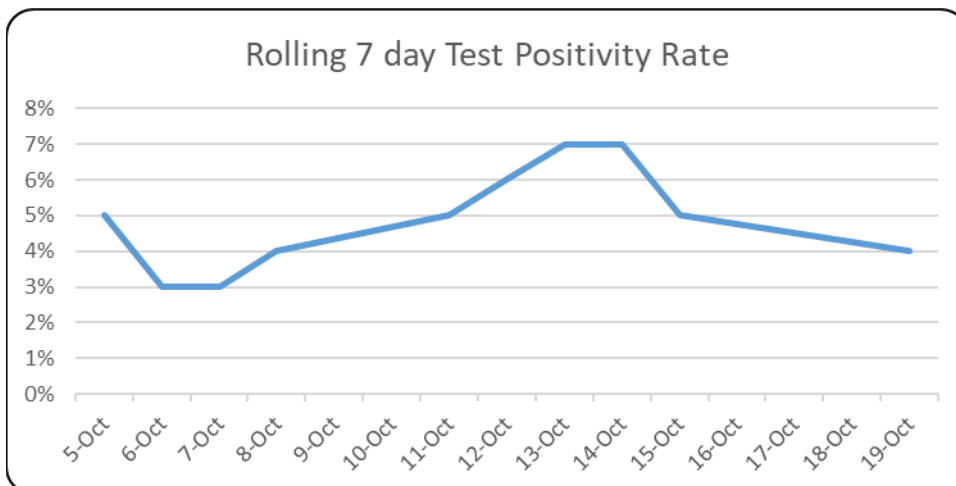


Variants of Concern:

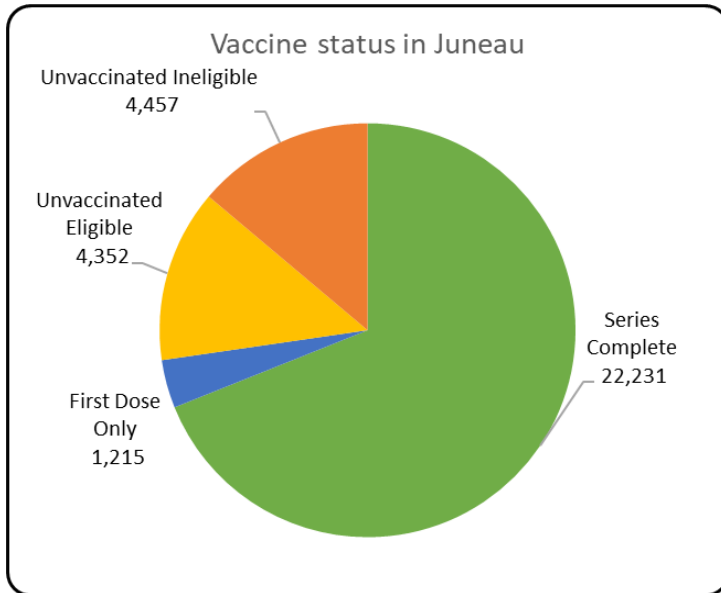
The Delta variant has become the dominant SARS-CoV-2 variant in Alaska. This variant transmits more easily than other variants. The State of Alaska variants dashboard is available online: <https://akvariants.github.io/>

Testing Summary:

978 COVID tests were processed through BRH since the last EOC report bringing the total number of tests at BRH to 1556 for the week. Most tests processed through BRH are returning in less than 24 hours.



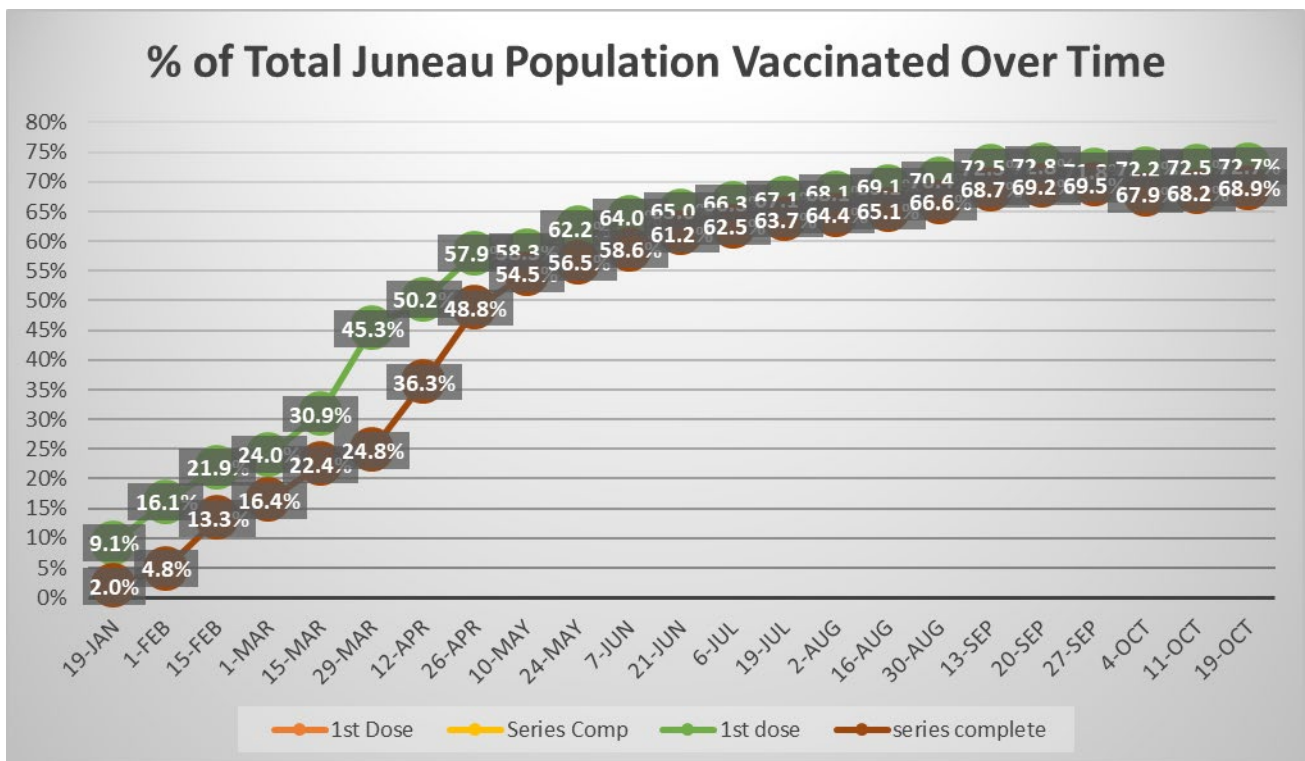
Vaccination Updates:

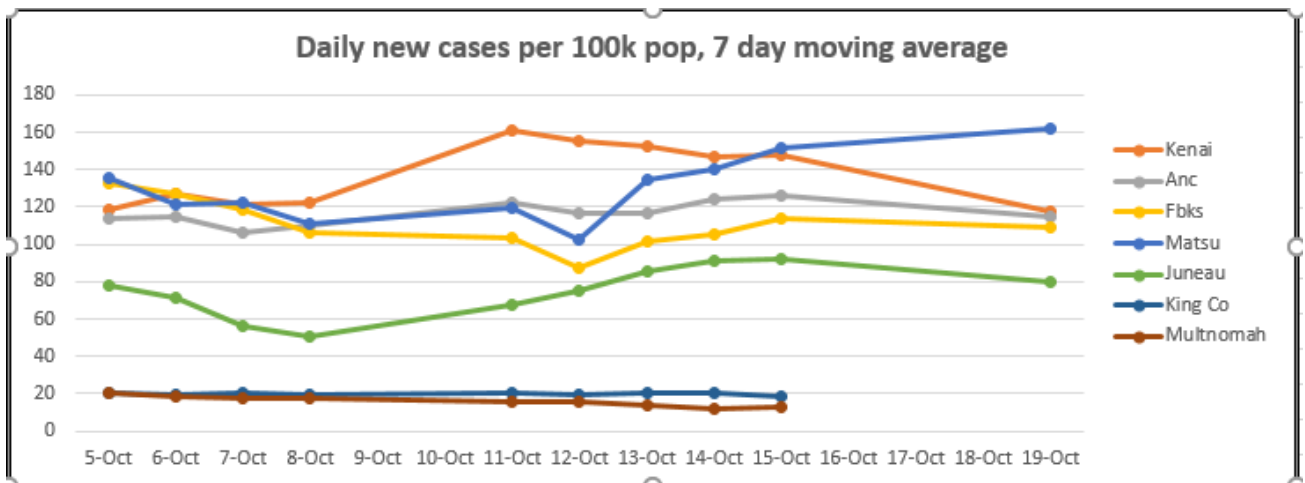
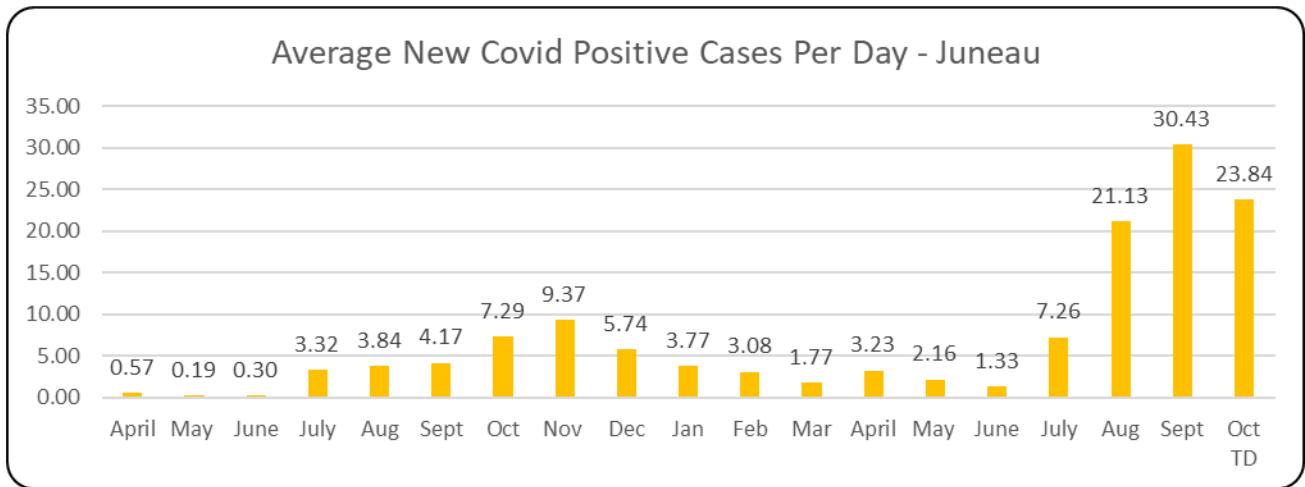


Total: **72.7%** of the total population of Juneau has received at least 1 dose of vaccine and **68.9%** have completed their vaccine series.

12+: **84.3%** of the age eligible Juneau population has received at least 1 dose of vaccine. **80.0%** have completed their vaccine series.

65+: **94.3%** of this age group has at least one dose of vaccine. **91.1%** have completed the vaccine series.





This chart tracks the number of new cases in the past 7 days, controlled for population. King County (Seattle) and Multnomah County (Portland) are included for context and due to travel frequency. The source data for Alaska is from the SOA dashboard. Out of state data is from the Harvard Global Health Institute (<https://globalepidemics.org/key-metrics-for-covid-suppression/>) and generally lags a day behind most of our other reporting. Policy recommendations at varying levels (<1, <10, <25, 25+) can be found on their website