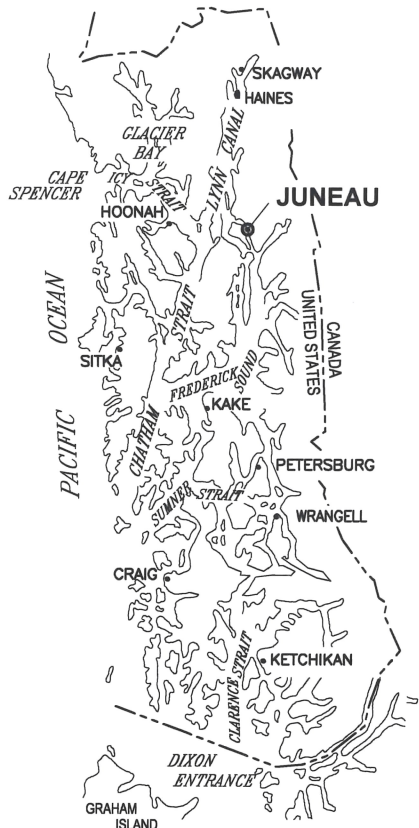


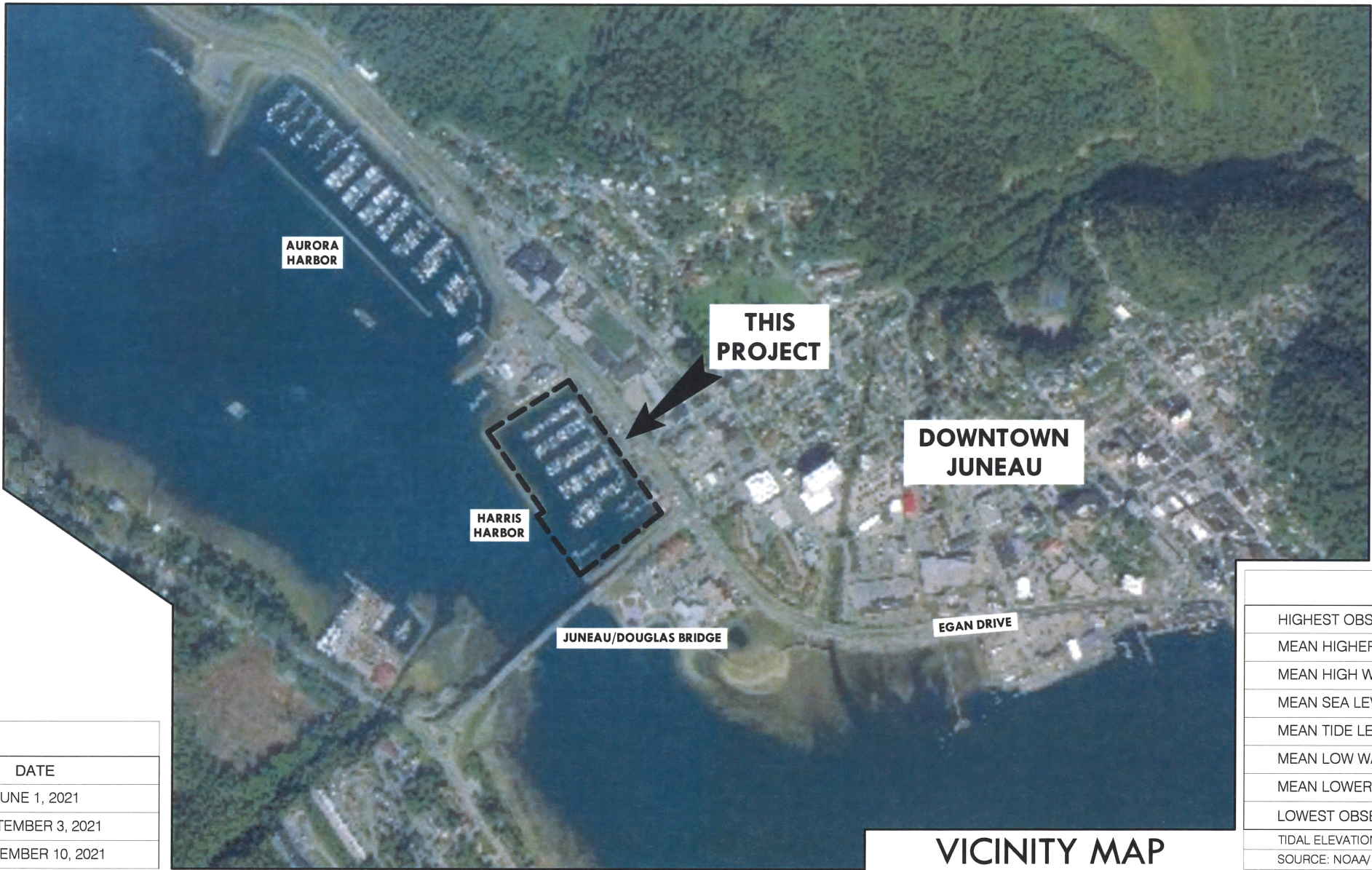
CITY AND BOROUGH OF JUNEAU, ALASKA

HARRIS HARBOR ANODE INSTALLATION

CBJ CONTRACT - DH 21-036



SOUTHEAST ALASKA



LOCATION MAP

PROJECT SCHEDULE	
MILESTONE	DATE
EARLIEST FIELD START	JUNE 1, 2021
SUBSTANTIAL COMPLETION	SEPTEMBER 3, 2021
FINAL COMPLETION	SEPTEMBER 10, 2021

TIDAL DATA	ELEVATION
HIGHEST OBSERVED WATER LEVEL	+24.58 FT
MEAN HIGHER HIGH WATER (MHHW)	+16.30 FT
MEAN HIGH WATER (MHW)	+15.34 FT
MEAN SEA LEVEL (MSL)	+8.56 FT
MEAN TIDE LEVEL (MTL)	+8.47 FT
MEAN LOW WATER (MLW)	1.60 Ft
MEAN LOWER LOW WATER (MLLW)	0.0 FT
LOWEST OBSERVED WATER LEVEL	-6.12
TIDAL ELEVATION SHOWN RELATIVE TO MLLW = 0.0 FEET	
SOURCE: NOAA/ NOS/CO-OPS STATION ID: 9452210 JUNEAU, ALASKA	



REVISIONS					
REV	DATE	DESCRIPTION	DWN	CHK	APP

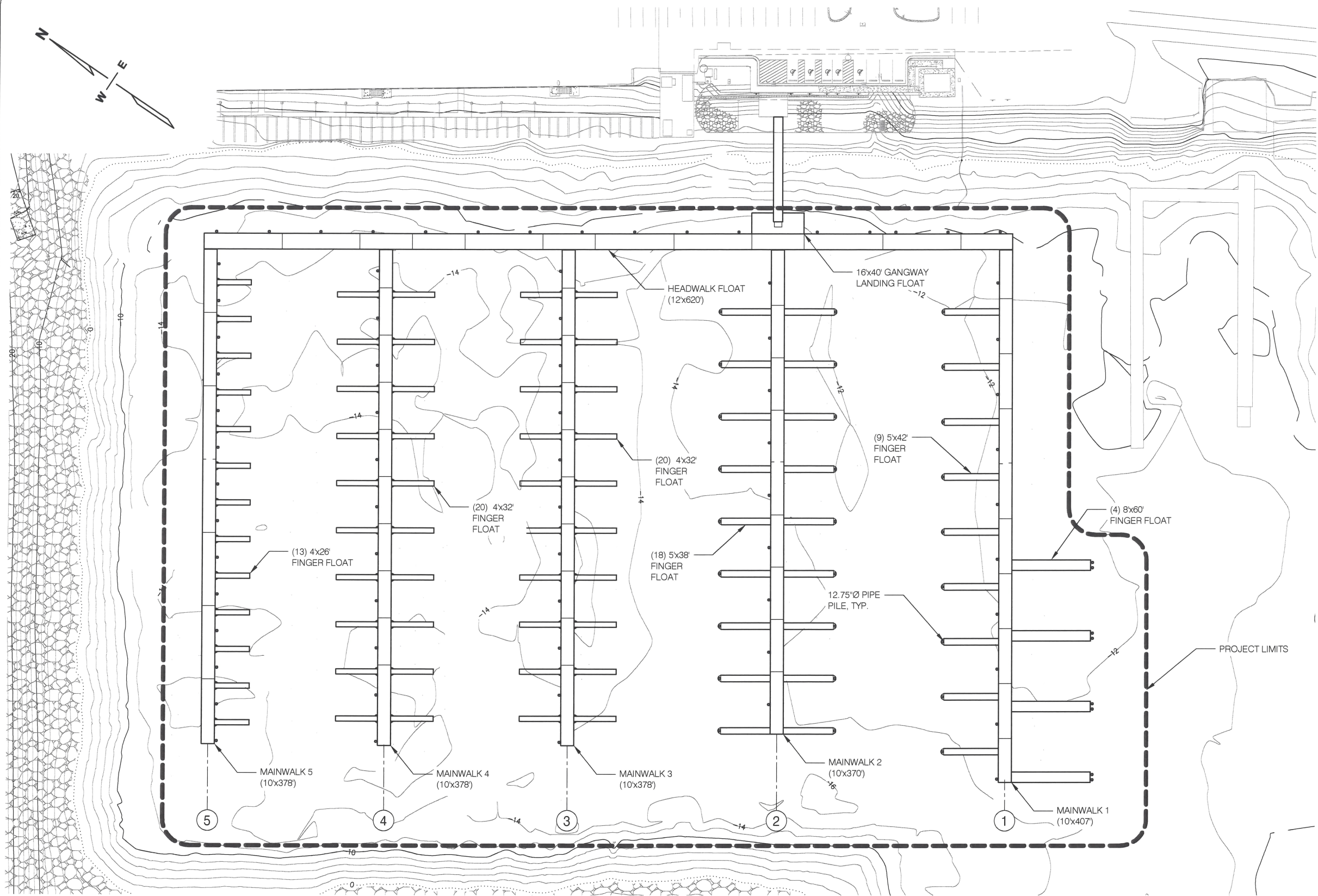
CITY AND BOROUGH OF JUNEAU
DOCKS & HARBORS DEPT.
155 SOUTH SEWARD STREET
JUNEAU, ALASKA 99801
PHONE: 907-586-0292



COVER SHEET

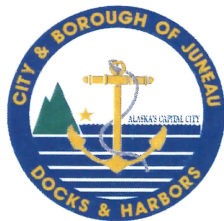
HARRIS HARBOR ANODE INSTALLATION

DESIGN:	MS	DATE:	MARCH 12, 2021
CHECKED:	ES	CONTRACT NO.	DH21-036
APPROVED:	CU	FILE NO.	1531



SCOPE OF WORK:

THE PROJECT SCOPE OF WORK INCLUDES: FURNISHING NEW ANODES, SURVEYING ANODE INSTALLATION ELEVATION, INSTALLING NEW ANODES ON STEEL PILES AT LOCATIONS INDICATED ON THE CONTRACT DRAWINGS, AND ANODE POTENTIAL READINGS AND CONTINUITY TESTING, AS INDICATED IN THE CONTRACT DOCUMENTS.

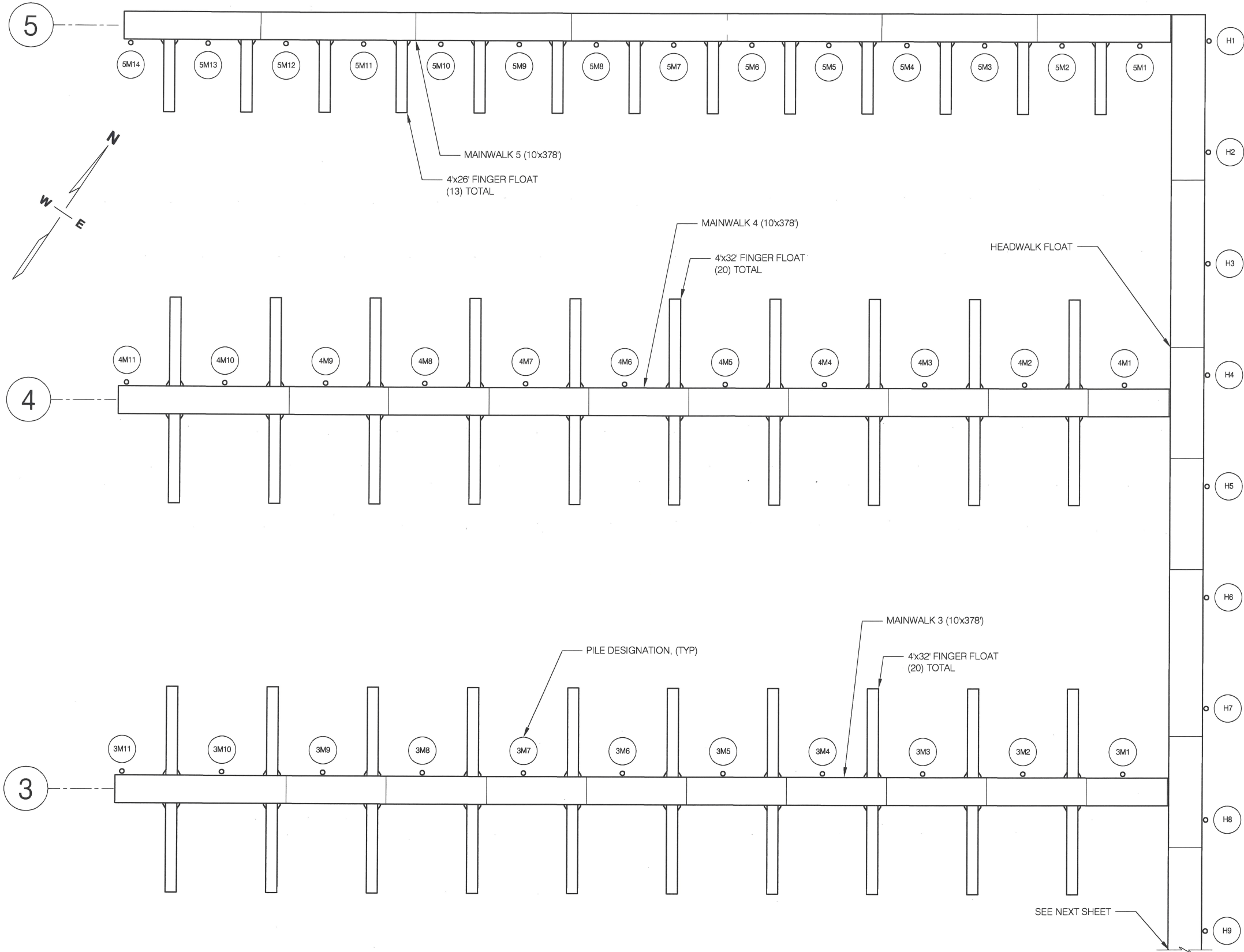


REVISIONS					
REV	DATE	DESCRIPTION	DWN	CHK	APP

CITY AND BOROUGH OF JUNEAU
DOCKS & HARBORS DEPT.
155 SOUTH SEWARD STREET
JUNEAU, ALASKA 99801
PHONE: 907-586-0292



HARRIS HARBOR GENERAL SITE PLAN HARRIS HARBOR ANODE INSTALLATION			
DESIGN:	MS	DATE:	MARCH 12, 2021
CHECKED:	ES	CONTRACT NO.:	DH21-036
APPROVED:	CU	FILE NO.:	1531



PILE ANODE INSTALLATION SCHEDULE

PILE NO.	LOCATION	PILE SIZE	ANODE TYPE	ANODE QUANTITY
1	H1	12.75"Ø	A	2
2	H2	12.75"Ø	A	2
3	H3	12.75"Ø	A	2
4	H4	12.75"Ø	A	2
5	H5	12.75"Ø	A	2
6	H6	12.75"Ø	A	2
7	H7	12.75"Ø	A	2
8	H8	12.75"Ø	A	2
9	H9	12.75"Ø	A	2
10	5M1	12.75"Ø	A	2
11	5M2	12.75"Ø	A	2
12	5M3	12.75"Ø	A	2
13	5M4	12.75"Ø	A	2
14	5M5	12.75"Ø	A	2
15	5M6	12.75"Ø	A	2
16	5M7	12.75"Ø	A	2
17	5M8	12.75"Ø	A	2
18	5M9	12.75"Ø	A	2
19	5M10	12.75"Ø	A	2
20	5M11	12.75"Ø	A	2
21	5M12	12.75"Ø	A	2
22	5M13	12.75"Ø	A	2
23	5M14	12.75"Ø	A	2
24	4M1	12.75"Ø	A	2
25	4M2	12.75"Ø	A	2
26	4M3	12.75"Ø	A	2
27	4M4	12.75"Ø	A	2
28	4M5	12.75"Ø	A	2
29	4M6	12.75"Ø	A	2
30	4M7	12.75"Ø	A	2
31	4M8	12.75"Ø	A	2
32	4M9	12.75"Ø	A	2
33	4M10	12.75"Ø	A	2
34	4M11	12.75"Ø	A	2
35	3M1	12.75"Ø	A	2
36	3M2	12.75"Ø	A	2
37	3M3	12.75"Ø	A	2
38	3M4	12.75"Ø	A	2
39	3M5	12.75"Ø	A	2
40	3M6	12.75"Ø	A	2
41	3M7	12.75"Ø	A	2
42	3M8	12.75"Ø	A	2
43	3M9	12.75"Ø	A	2
44	3M19	12.75"Ø	A	2
45	3M11	12.75"Ø	A	2



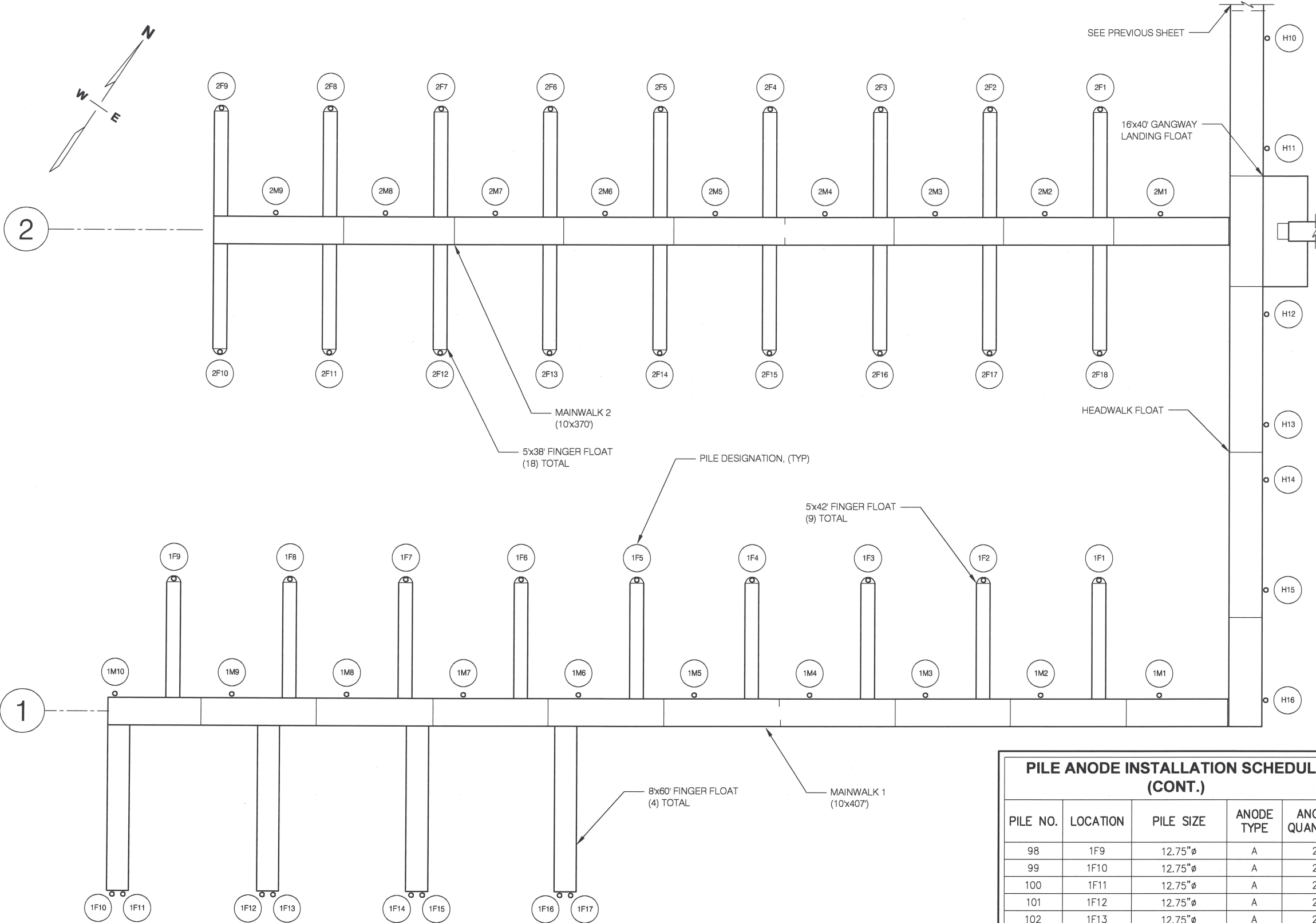
REVISIONS					
REV	DATE	DESCRIPTION	DWN	CHK	APP

CITY AND BOROUGH OF JUNEAU
DOCKS & HARBORS DEPT.
155 SOUTH SEWARD STREET
JUNEAU, ALASKA 99801
PHONE: 907-586-0292



PILE LAYOUT - HEADWALK,
MAINWALKS 3,4 & 5
HARRIS HARBOR ANODE INSTALLATION

DESIGN:	MS	DATE:	MARCH 12, 2021
CHECKED:	ES	CONTRACT NO.	DH21-036
APPROVED:	CU	FILE NO.	1531



PILE ANODE INSTALLATION SCHEDULE				
PILE NO.	LOCATION	PILE SIZE	ANODE TYPE	ANODE QUANTITY
46	H10	12.75"ø	A	2
47	H11	12.75"ø	A	2
48	H12	12.75"ø	A	2
49	H13	12.75"ø	A	2
50	H14	12.75"ø	A	2
51	H15	12.75"ø	A	2
52	H16	12.75"ø	A	2
53	2M1	12.75"ø	A	2
54	2M2	12.75"ø	A	2
55	2M3	12.75"ø	A	2
56	2M4	12.75"ø	A	2
57	2M5	12.75"ø	A	2
58	2M6	12.75"ø	A	2
59	2M7	12.75"ø	A	2
60	2M8	12.75"ø	A	2
61	2M9	12.75"ø	A	2
62	2F1	12.75"ø	A	2
63	2F2	12.75"ø	A	2
64	2F3	12.75"ø	A	2
65	2F4	12.75"ø	A	2
66	2F5	12.75"ø	A	2
67	2F6	12.75"ø	A	2
68	2F7	12.75"ø	A	2
69	2F8	12.75"ø	A	2
70	2F9	12.75"ø	A	2
71	2F10	12.75"ø	A	2
72	2F11	12.75"ø	A	2
73	2F12	12.75"ø	A	2
74	2F13	12.75"ø	A	2
75	2F14	12.75"ø	A	2
76	2F15	12.75"ø	A	2
77	2F16	12.75"ø	A	2
78	2F17	12.75"ø	A	2
79	2F18	12.75"ø	A	2
80	1M1	12.75"ø	A	2
81	1M2	12.75"ø	A	2
82	1M3	12.75"ø	A	2
83	1M4	12.75"ø	A	2
84	1M5	12.75"ø	A	2
85	1M6	12.75"ø	A	2
86	1M7	12.75"ø	A	2
87	1M8	12.75"ø	A	2
88	1M9	12.75"ø	A	2
89	1M10	12.75"ø	A	2
90	1F1	12.75"ø	A	2
91	1F2	12.75"ø	A	2
92	1F3	12.75"ø	A	2
93	1F4	12.75"ø	A	2
94	1F5	12.75"ø	A	2
95	1F6	12.75"ø	A	2
96	1F7	12.75"ø	A	2
97	1F8	12.75"ø	A	2

PILE ANODE INSTALLATION SCHEDULE (CONT.)				
PILE NO.	LOCATION	PILE SIZE	ANODE TYPE	ANODE QUANTITY
98	1F9	12.75"ø	A	2
99	1F10	12.75"ø	A	2
100	1F11	12.75"ø	A	2
101	1F12	12.75"ø	A	2
102	1F13	12.75"ø	A	2
103	1F14	12.75"ø	A	2
104	1F15	12.75"ø	A	2
105	1F16	12.75"ø	A	2
106	1F17	12.75"ø	A	2



REVISIONS					
REV	DATE	DESCRIPTION	DWN	CHK	APP

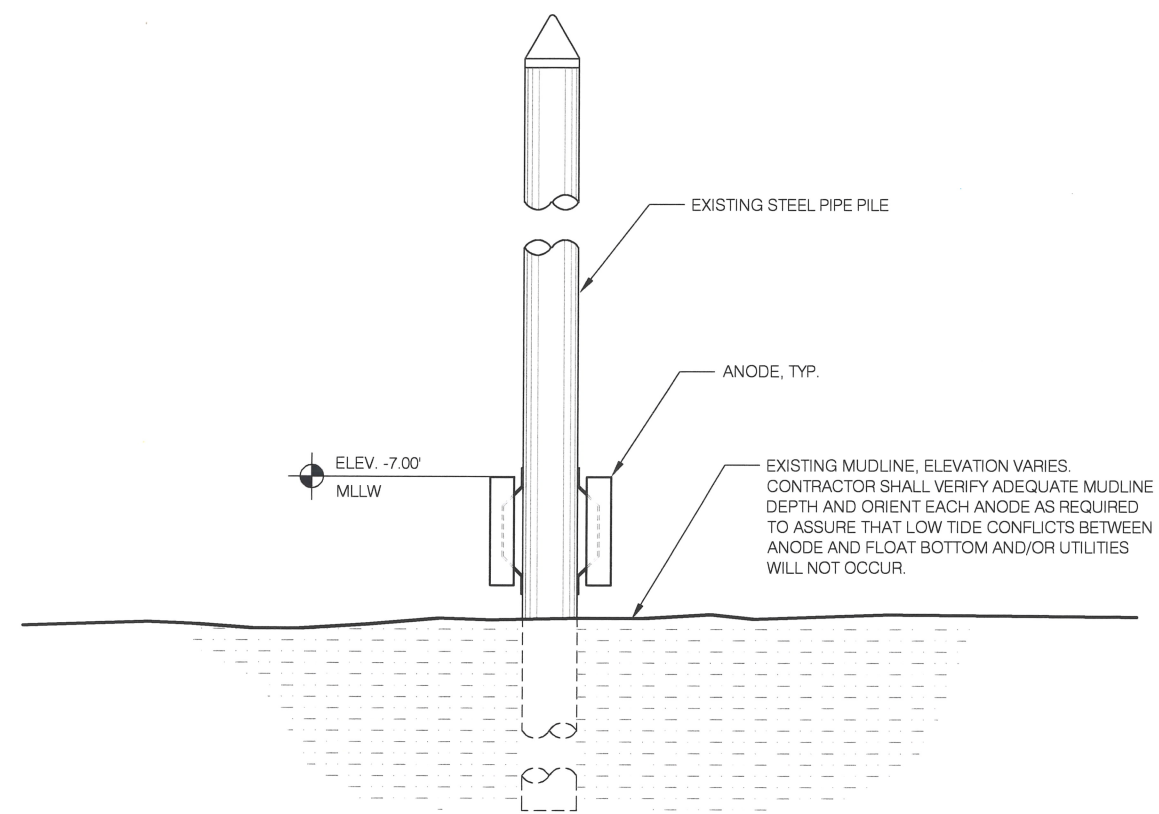
CITY AND BOROUGH OF JUNEAU
DOCKS & HARBORS DEPT.
155 SOUTH SEWARD STREET
JUNEAU, ALASKA 99801
PHONE: 907-586-0292



PILE LAYOUT - HEADWALK, MAINWALKS 1 & 2 HARRIS HARBOR ANODE INSTALLATION			
DESIGN:	MS	DATE:	MARCH 12, 2021
CHECKED:	ES	CONTRACT NO.:	DH21-036
APPROVED:	CU	FILE NO.:	1531

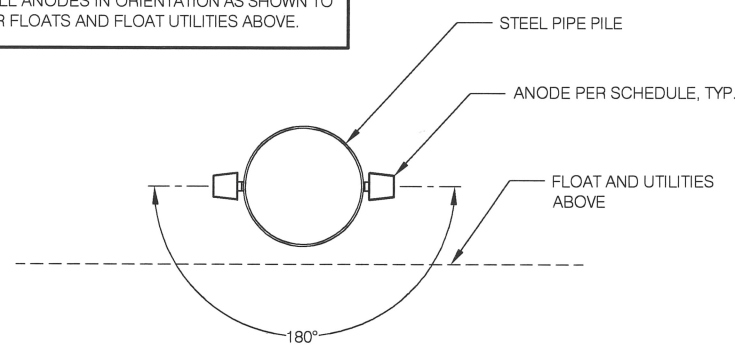
12:20 PM December 21, 2020

2021 - Harris Harbor Anode Installation

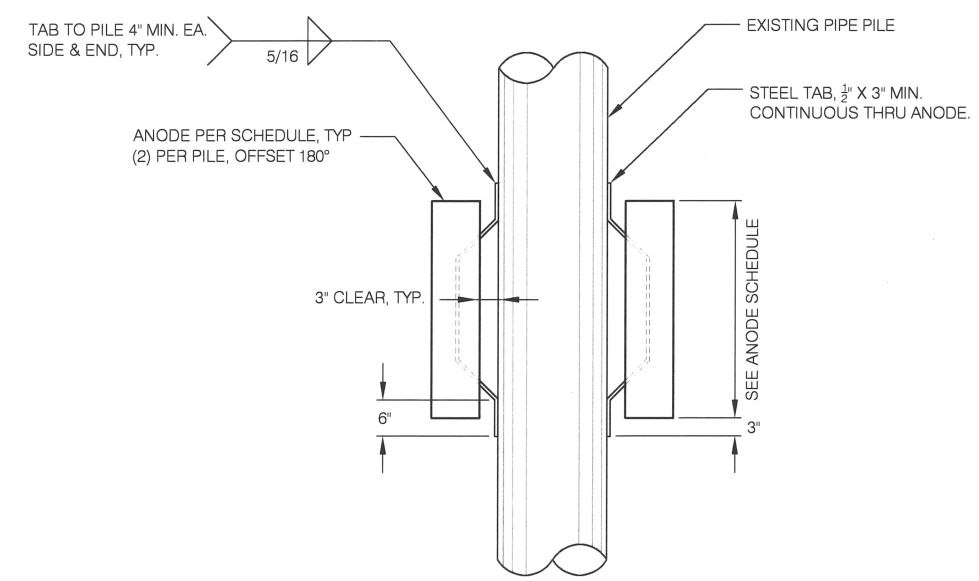


PILE ANODE INSTALLATION

NOTE:
INSTALL ANODES IN ORIENTATION AS SHOWN TO CLEAR FLOATS AND FLOAT UTILITIES ABOVE.



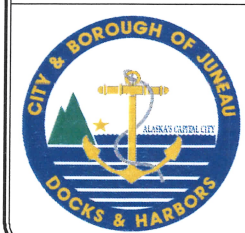
ANODE RADIAL LAYOUT PLAN



ANODE DETAIL

ANODE INSTALLATION SCHEDULE					
FLOAT	PILE DIAMETER	TYPE	DIMENSIONS	NOMINAL WEIGHT	QUANTITY REQ'D
HEADWALK	12.75"Ø	A	8"x8"x36"	230 LBS	32
1	12.75"Ø	A	8"x8"x36"	230 LBS	54
2	12.75"Ø	A	8"x8"x36"	230 LBS	54
3	12.75"Ø	A	8"x8"x36"	230 LBS	22
4	12.75"Ø	A	8"x8"x36"	230 LBS	22
5	12.75"Ø	A	8"x8"x36"	230 LBS	28
TOTAL:					212

PILE ANODE SCHEDULE



REVISIONS					
REV	DATE	DESCRIPTION	DWN	CHK	APP

CITY AND BOROUGH OF JUNEAU
DOCKS & HARBORS DEPT.
155 SOUTH SEWARD STREET
JUNEAU, ALASKA 99801
PHONE: 907-586-0292



ANODE DETAILS			
HARRIS HARBOR ANODE INSTALLATION			
DESIGN:	MS	DATE:	MARCH 12, 2021
CHECKED:	ES	CONTRACT NO.	DH21-036
APPROVED:	CU	FILE NO.	1531