



ADDENDUM TO THE CONTRACT

for the

**Bartlett Regional Hospital Emergency Department Ventilation Upgrades
Contract No. BE22-037**

ADDENDUM NO.: TWO

**CURRENT DEADLINE FOR BIDS:
August 5, 2021**

PREVIOUS ADDENDA: ONE

ISSUED BY: City and Borough of Juneau
ENGINEERING DEPARTMENT
155 South Seward Street
Juneau, Alaska 99801

**PREVIOUS DEADLINE FOR BIDS:
August 3, 2021**

DATE ADDENDUM ISSUED: July 29, 2021

The following items of the contract are modified as herein indicated. All other items remain the same. This addendum has been issued and is posted online. Please refer to the CBJ Engineering Contracts Division webpage at: <https://juneau.org/engineering-public-works/current-bids-and-rfps>

INFORMATIONAL ITEM:

- Item No. 1 There are three (3) each existing 1/2" EMT electrical conduits near the planned floor penetration location above Trauma Bay 2. These conduits shall be removed and reinstalled and as necessary to locate slab reinforcing steel and/or embedded electrical conduits. These conduits shall be relocated as necessary to make floor penetrations and install new ducts. Attached are information photos of the approximate floor penetration areas, taken from the undersides of the slabs. Disregard the rectangular penetrations shown. The reinforcing steel shown on the photos is a best estimate of the existing bars in the lower mat of reinforcement and shall not be used for locating the penetrations or for bidding purposes. It is the contractor's responsibility to locate all critical reinforcing steel and/or embedded electrical conduits prior to making floor penetrations.
- Item No. 2 Attached are informational photos of the existing receptacle raceway to be removed and replaced in Room 2748 as necessary to allow for new mechanical duct work and chase and as shown on Sheet E202.

PROJECT MANUAL:

- Item No. 1 SECTION 00030 - NOTICE INVITING BIDS. DEADLINE FOR BIDS.

Change the date of the Deadline for Bids **from** August 3, 2021 **to** August 5, 2021
The time remains the same.

- Item No. 2 SECTION 084243- SLIDING ICU DOORS PART 2 PRODUCTS ARTICLE 2.1 ICU/CCU ENTRANCES, paragraph A, **delete** in its entirety and **replace** with the following:
- A. Manufacturer: Provide by Stanley Access Technologies, 1000 Stanley Drive, New Britain, CT 06053, 860-225-5111; Dura-Care™ 7500 TL-FBO Series manual sliding ICU/CCU entrances. Sole source, no substitution, <https://www.stanleyaccess.com/DuraCare-7500Series>, Manufacturers Representative – Larry Hamaker larry.hamaker@sbdinc.com 770-672-0757
- Item No. 3 **Delete** SECTION 00310- BID SCHEDULE in its entirety and **replace** with the attached Bid Scheduled labeled Addendum 2
- Item No. 4 SECTION 00100- INSTRUCTION TO BIDDERS **Delete** Bid Modification Form, page 10, and **replace** with the attached Bid Modification Form labeled Addendum 2.
- Item No. 5 SECTION 00800 – SUPPLEMENTARY GENERAL CONDITIONS, S.G.C. 6.5 CONCERNING SUBCONTRACTORS, SUPPLIERS AND OTHERS paragraph B, **delete** in its entirety and **replace** with the following:
- “B. The CONTRACTOR shall perform not less than 25% of the WORK with its own forces (i.e., without subcontracting). The 25% requirement shall be understood to mean that the CONTRACTOR shall perform, with its own organization, WORK amounting to at least 25% of the original contract amount. The 25% requirement will be calculated based upon the total of the subcontract amounts submitted for Contract Award, and any other information requested by the OWNER from the apparent low Bidder.”
- Item No. 6 SECTION 00500 AGREEMENT ARTICLE 4 LIQUIDATED DAMAGES **delete** \$450 and **replace** with \$1000.
- Item No. 7 TECHNICAL SPECIFICATIONS, **add** the attached SECTION 095113 - ACCOUSTICAL PANEL CEILINGS labeled Addendum 2
- Item No. 8 SECTION 011000 – SUMMARY – Article 1.4, WORK COVERED BY CONTRACT DOCUMENTS, **add the following:**
- A. Additive Alternate A Work will include the addition of control points, sensors, controls graphics, and owner training for the integration of the new pressure monitors and exhaust fan with the existing Building Automation System (BAS).

- Item No. 9 SECTION 011000 – SUMMARY – Article 1.4, WORK COVERED BY CONTRACT DOCUMENTS, **delete Paragraph H, Type of Contract, and replace with the following:**
- H. Type of Contract.
1. The project will be constructed under a unit price contract with two pay items as follows:
 - a. One lump sum item for the base work, which may or may not include the additive alternate work,
 - b. One contingent sum item per each, for structural retrofits per detail A/S001 as directed by the Engineer.

- Item No. 10 SECTION 011025 – MEASUREMENT AND PAYMENT – ARTICLE 1.2, PRICE BASED ON LUMP SUM PAYMENT, **delete this article in its entirety and replace with the following:**

- 1.2 PRICE BASED ON LUMP SUM PAY UNIT
- A. Measurement for payment for the Lump Sum Pay Unit will be based upon the completion of the entire WORK as a Lump Sum Pay Unit, complete, all in accordance with the requirements of the Contract Documents. WORK for this item shall include all work except WORK included in the contingent sum item.
 - B. Payment will be made at the amount shown on the Bid Schedule, which payment will constitute full compensation for all WORK.
 - C. Payment for the base WORK will be paid for as a Lump Sum Pay Unit, which may or may not include the additive alternate bid work.
 - D. WORK for floor penetrations for ducts includes locating existing reinforcing steel and/or embedded electrical conduits at penetration locations using non-destructive testing. WORK includes removal and replacement and/or relocation of existing electrical conduits/conductors and/or mechanical equipment as necessary to complete work.

DRAWINGS:

- Item No. 1 SHEET A001, SCHEDULES /CODE DATA **delete** this sheet in its entirety and replace with the attached SHEET A001 labeled Addendum 2.
- Item No. 2 SHEET A201, FIRST FLOOR OVERALL PLAN **delete** this sheet in its entirety and replace with the attached SHEET A201 labeled Addendum 2.
- Item No. 3 SHEET A403, ENLARGED THIRD FLOOR PLAN **delete** this sheet in its entirety and replace with the attached SHEET A403 labeled Addendum 2.

- Item No. 4 SHEET A404, ENLARGED ROOF PLAN **delete** this sheet in its entirety and replace with the attached SHEET A404 labeled Addendum 2.
- Item No. 5 SHEET A602, **delete** this sheet in its entirety and replace with the attached SHEET A602 labeled Addendum 2.
- Item No. 6 PLAN SHEET M-002 SPECIFICATIONS, **add the following:**
ADDITIVE ALTERNATE 1:
3.E. SEQUENCE OF OPERATIONS:
1. PM-1: Install the following control points:
a. Analog in: Room differential pressure
b. Digital in: Alarm
i. Send out system Alarm if room pressurization is not maintained for 15 minutes
2. EF-37: Install the following control points:
a. Digital in: Fan STATUS, sensor shall be differential pressure sensor across fan wheel, fan current sensor is not acceptable
i. Send out system Alarm if fan fails to operate
b. Digital out: Fan RUN, interlock with fan starter
i. Fan is scheduled to run constantly
3. Create graphics page showing control points for EF-37 and PM-1
3.F SENSORS: All exterior DDC systems and equipment shall be rated for exterior installation. Enclosures, sensors and appurtenances shall be moisture and corrosion resistant.
3.G TRAINING: Provide owner 2 hours of training on the new DDC integrated systems and graphics.
- Item No. 7 PLAN SHEET E100, Panel EQ21B1 Schedule, **change** operating voltage "480Y/277V" to "208Y/120V"
- Item No. 8 PLAN SHEET E100, Panel EQ43B1, **add** the following note:
"3. Panel EQ43B1 shall remain energized during the electrical work to maintain the operation of the associated mechanical equipment."
- Item No. 9 PLAN SHEET E201, Notes, **add** the following note:
"3. Reroute and extend the (3EA) 1/2" conduits and associated wiring above the suspended ceiling in ED Trauma Bay 2 (1409B) to allow the installation of new duct work. Investigate the existing conditions of these conduits prior to work. Coordinate this work with the mechanical discipline."
- Item No. 10 PLAN SHEET M-102, SHEET KEYNOTES, KEYNOTE 1, **change** "COORDINATE

PENETRATION AND DUCT LOCATIONS TO AVOID INSLAB REINFORCEMENT BAR" to "COORDINATE PENETRATION AND DUCT LOCATIONS TO AVOID INSLAB BOTTOM MAT REINFORCING STEEL AND INSLAB ELECTRICAL CONDUITS"

Item No. 11 PLAN SHEET M-103, SHEET KEYNOTES, KEYNOTE 1, **change** "COORDINATE PENETRATION AND DUCT LOCATIONS TO AVOID INSLAB REINFORCEMENT BAR" to "COORDINATE PENETRATION AND DUCT LOCATIONS TO AVOID INSLAB BOTTOM MAT REINFORCING STEEL AND INSLAB ELECTRICAL CONDUITS"

Item No. 12 PLAN SHEET A-402, SHEET KEY NOTES, KEY NOTE 2, **add** the following:
"COORDINATE CONCRETE FLOOR PENETRATIONS WITH EXISTING IN-SLAB ELECTRICAL CONDUITS AND OTHER UTILITIES TO AVOID DAMAGING ANY IN-SLAB ELECTRICAL OR OTHER UTILITIES. CONTRACTOR IS RESPONSIBLE FOR DAMAGE AND REPAIRS TO ANY INSLAB UTILITIES."

Item No. 13 PLAN SHEET A-403, SHEET KEY NOTES, KEY NOTE 2, **add** the following:
"COORDINATE CONCRETE FLOOR PENETRATIONS WITH EXISTING IN-SLAB ELECTRICAL CONDUITS AND OTHER UTILITIES TO AVOID DAMAGING ANY IN-SLAB ELECTRICAL OR OTHER UTILITIES. CONTRACTOR IS RESPONSIBLE FOR DAMAGE AND REPAIRS TO ANY INSLAB UTILITIES."

Item No. 14 PLAN SHEET A-404, SHEET KEY NOTES, KEY NOTE 1, **add** the following:
"COORDINATE CONCRETE ROOF PENETRATION WITH EXISTING IN-SLAB ELECTRICAL CONDUITS AND OTHER UTILITIES TO AVOID DAMAGING ANY IN-SLAB ELECTRICAL OR OTHER UTILITIES. CONTRACTOR IS RESPONSIBLE FOR DAMAGE AND REPAIRS TO ANY INSLAB UTILITIES."

By: 
Greg Smith,
Contract Administrator

Total number of pages contained within this Addendum: 24

SECTION 00100 - INSTRUCTIONS TO BIDDERS

CITY AND BOROUGH OF JUNEAU
PURCHASING DIVISION
FAX NO. 907-586-4561

BID MODIFICATION FORM

Modification Number: _____

Modification Page ____ of ____

Note: All modifications shall be made to the original bid amount(s). If more than one Modification form is submitted by any one bidder, changes from all Modification forms submitted will be combined and applied to the original bid. Changes to the modified Bid amounts will be calculated by the OWNER. Bidder may use multiple modification pages if required.

PAY ITEM NO.	PAY ITEM DESCRIPTION	MODIFICATIONS TO LUMP SUM <i>(indicate +/-)</i>

Base Bid Total Increase or Decrease: \$ _____

PAY ITEM No.	ALTERNATE PAY ITEM DESCRIPTION	MODIFICATIONS TO LUMP SUM <i>(indicate +/-)</i>

Alternate Total Increase or Decrease: \$ _____

Name of Bidding Firm

Responsible Party Signature

Printed Name (must be an authorized signatory for Bidding Firm)

END OF SECTION

SECTION 00310 - BID SCHEDULE

Bid Schedule for construction of **BE22-037 BARTLETT REGIONAL HOSPITAL EMERGENCY DEPARTMENT VENTILATION UPGRADES**, in accordance with the Contract Documents.

BASE BID - Furnish all labor, equipment and materials to enclose Trauma Bay #1 at Bartlett Regional Hospital's Emergency Department with sliding glass doors, construct new chases for ventilation ducts, and roofing penetration details; Mechanical work to install new ventilation ductwork and exhaust fan unit; Electrical work to provide new circuits for exhaust fan and ventilation components and relocate existing electrical as necessary. Other work includes penetrations through structural concrete floors and roof for ventilation ducts, including locating existing reinforcing steel and/or embedded electrical conduits. Subsidiary work includes Infectious Control Risk Assessment and implementation and perform all WORK as described in these Contract Documents

TOTAL BASE BID \$ _____
(Price in Figures)

CONTINGENT SUM ITEM, per EACH, 4 QTY- Furnish all labor, equipment and materials, including all Infection Control Risk Assessment (ICRA) measures and relocation of existing electrical and mechanical equipment as necessary for each structural retrofit per the plan details as required by the Engineer.

TOTAL CONTINGENT SUM \$ _____
(Price in Figures)

ADDITIVE ALTERNATE NO. 1 All WORK to include the addition of control points, sensors, controls graphics, and owner training for the integration of the new pressure monitors and exhaust fan with the existing Building Automation System (BAS) as specified on Sheet M002. This WORK is to be performed by LONG Building Technologies – sole source, no substitutions

TOTAL ADDITIVE ALTERNATE NO. 1 \$ _____
(Price in Figures)

Date: _____ Bidder: _____
(Company Name)

END OF SECTION

095113 – ACOUSTICAL PANEL CEILINGS

SECTION 095113 - ACOUSTICAL PANEL CEILINGS

PART 1 - GENERAL

1.1 SUMMARY

- A. Section includes acoustical panels at exposed suspension systems for interior ceilings.

1.2 ACTION SUBMITTALS

- A. Product Data: For each type of product.

1.3 INFORMATIONAL SUBMITTALS

- A. Product test reports.
- B. Research reports.
- C. Field quality-control reports.

1.4 CLOSEOUT SUBMITTALS

- A. Maintenance data.

PART 2 - PRODUCTS

- A. Surface-Burning Characteristics: Comply with ASTM E84; testing by a qualified testing agency. Identify products with appropriate markings of applicable testing agency.
 - 1. Flame-Spread Index: Class A according to ASTM E1264.
 - 2. Smoke-Developed Index: 50 or less.

2.2 ACOUSTICAL PANELS

- A. Manufacturers: Subject to compliance with requirements, provide products by the following:
 - 1. Armstrong Ceiling & Wall Solutions.
 - a. BASIS OF DESIGN - CLEAN ROOM™ FL: 1716
- B. Acoustical Panel Standard: Manufacturer's standard panels according to ASTM E1264.
- C. Classification: Type IV, Form 2, Patterns GH.
- D. Color: White As indicated on Drawings.

095113 – ACOUSTICAL PANEL CEILINGS

- E. Ceiling Attenuation Class (CAC): CAC 35.
- F. Noise Reduction Coefficient (NRC): NRC 0.55.
- G. Edge/Joint Detail: Square.
- H. Thickness: 3/4 inch (19 mm) As indicated on Drawings.
- I. Modular Size: 24 by 48 inches (610 by 1220 mm) As indicated on Drawings.
- J. Mold- and mildew-resistant surface.
- K. Soil-resistant polyester film.

2.3 ACCESSORIES

- A. Hold-Down Clips: Manufacturer's standard hold-down.

PART 3 - EXECUTION

3.1 INSTALLATION

- A. Install acoustical panel ceilings according to ASTM C636/C636M and manufacturer's written instructions.
 - a. As indicated on reflected ceiling plans.

END OF SECTION 095113

Information Items

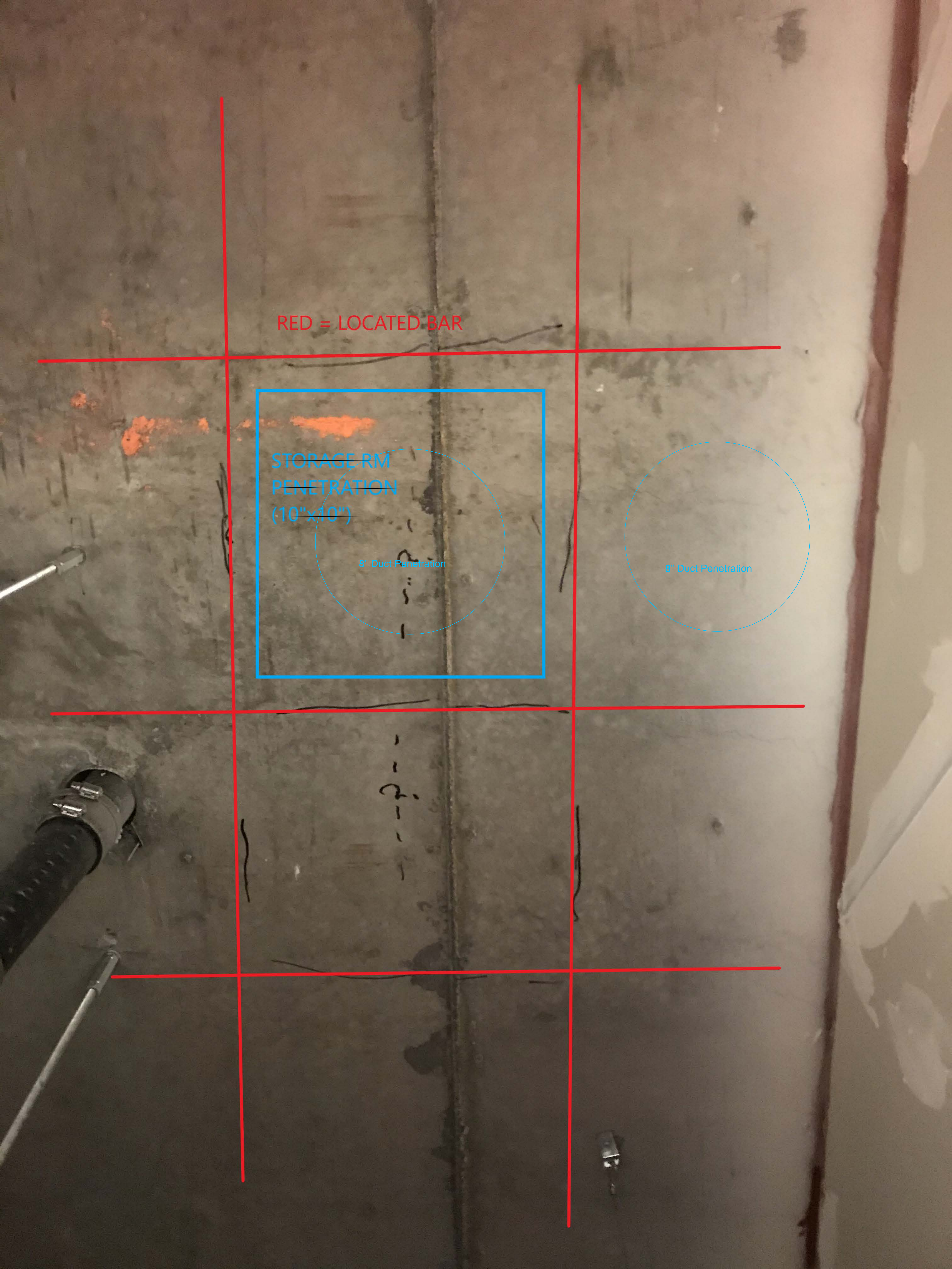
Trauma and Storage Room Reference Photos

RED = LOCATED BAR

STORAGE RM
PENETRATION
(10"x10")

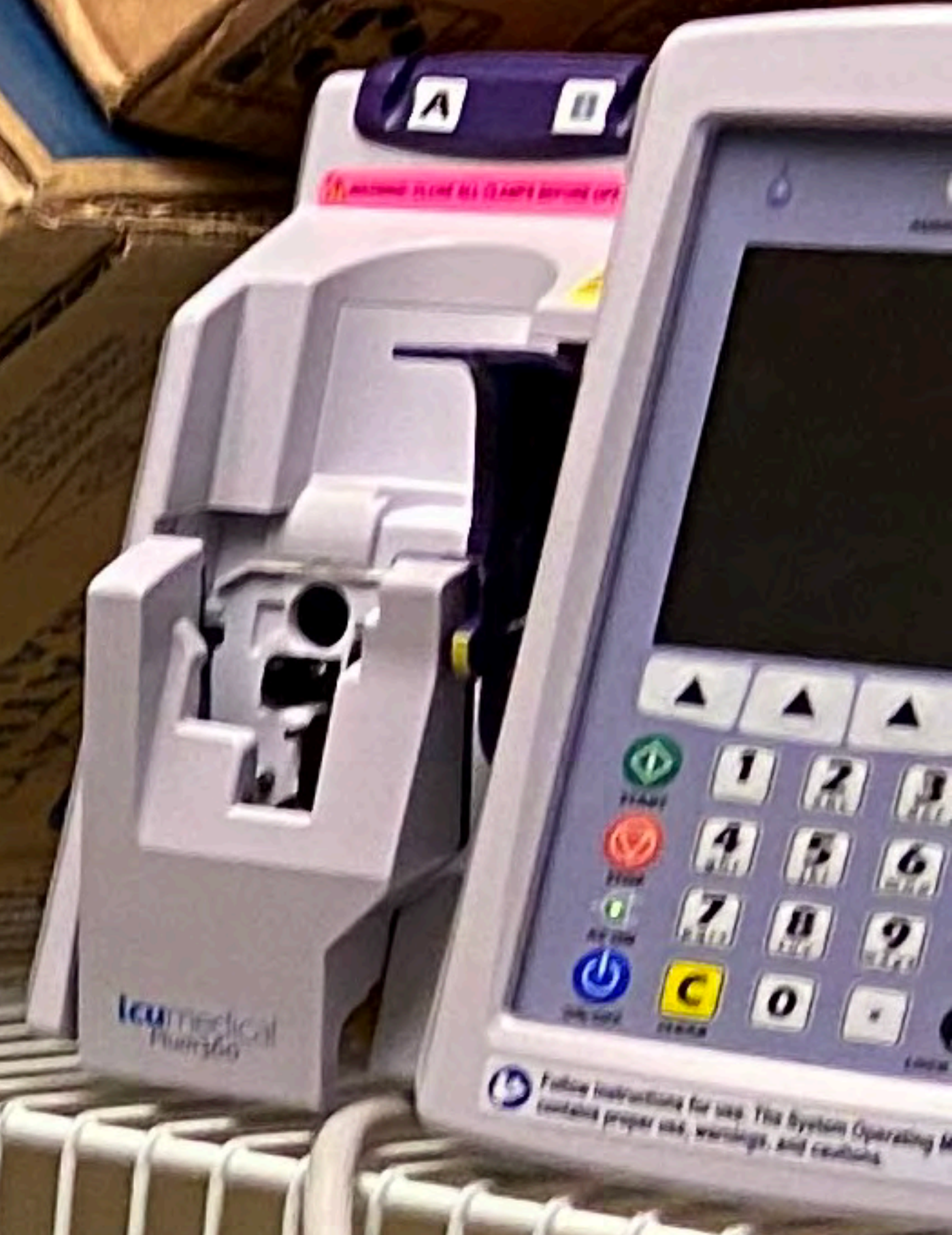
8" Duct Penetration

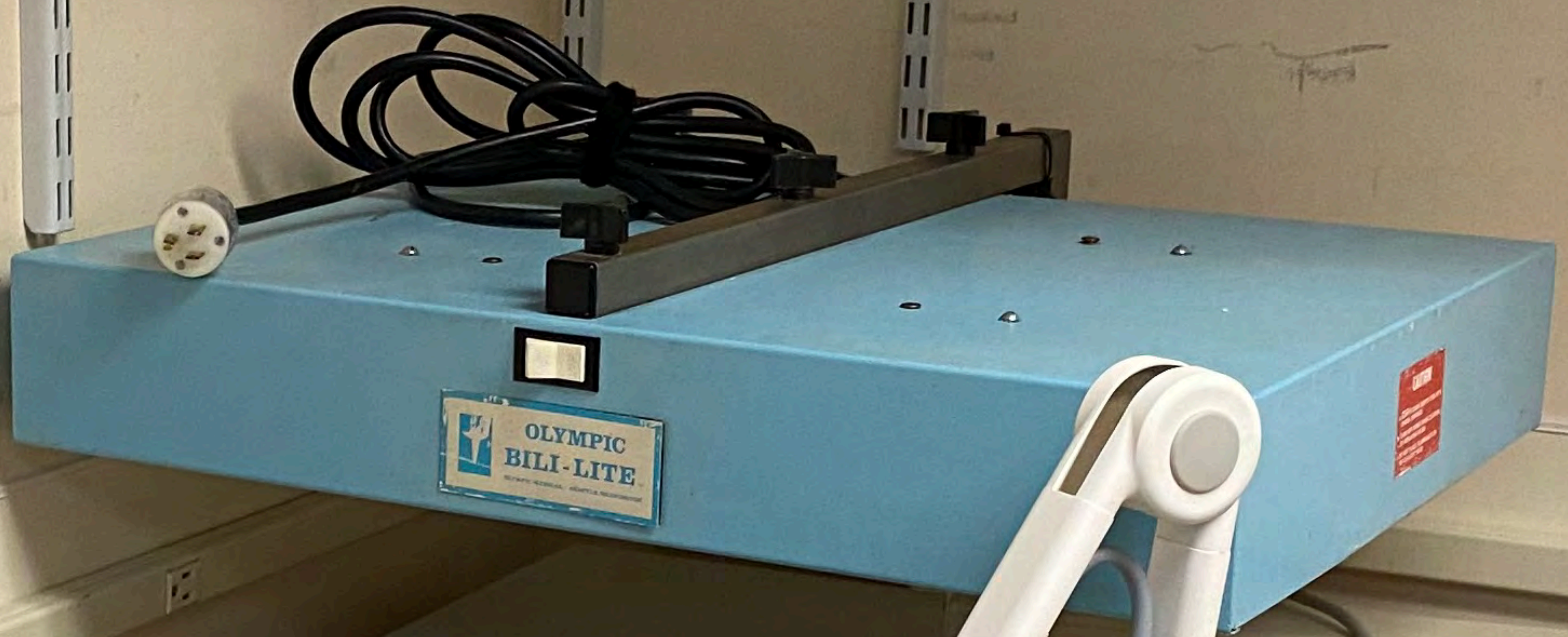
8" Duct Penetration











PENDANT
Cable Pack
15062-131-0010



PHILIPS

ATTENTION
THIS UNIT MUST
BE PLUGGED IN
TO MAINTAIN BATTERY

Clamp Tubing
Before Handling Vial
Premier doit clamped avant
de manipuler le flacon

DOSE D

EXIT

1

4

7

8

0

HISTORY BATTERY

ON OFF

icu
LifeCare

UNCLAMP
TUBING
Before Starting Therapy



BARTLETT REGIONAL HOSPITAL EMERGENCY DEPARTMENT COVID VENTILATION IMPROVEMENTS

ARCHITECTURAL SHEET INDEX:

- A-001 SCHEDULES AND CODE DATA
- A-002 PARTITION SCHEDULE, LEGEND, PHASING NOTES
- A-101 LIFE SAFETY PLAN - FIRST FLOOR
- A-102 LIFE SAFETY PLAN - SECOND FLOOR
- A-103 LIFE SAFETY PLAN - THIRD FLOOR
- A-201 FIRST FLOOR OVERALL PLAN
- A-202 SECOND FLOOR OVERALL PLAN
- A-203 THIRD FLOOR OVERALL PLAN
- A-301 ENLARGED ELEVATION
- A-302 WALL SECTIONS
- A-303 ENLARGED WALL SECTIONS
- A-401 ENLARGED FIRST FLOOR PLAN
- A-402 ENLARGED SECOND FLOOR PLAN
- A-403 ENLARGED THIRD FLOOR PLAN
- A-404 ENLARGED ROOF PLAN
- A-601 PARTIAL REFLECTED CEILING PLAN
- A-602 PARTIAL REFLECTED CEILING PLAN & CUBICLE TRACK DETAILS
- A-801 EXTERIOR DETAILS
- A-901 INTERIOR DETAILS

CBJ CONTRACT NO. BE22-037

FOR:

BARTLETT REGIONAL HOSPITAL JUNEAU, ALASKA

MECHANICAL SHEET INDEX:

- M-001 SYMBOLS AND SCHEDULES
- M-002 MECHANICAL SPECIFICATIONS
- M-101 ENLARGED FIRST FLOOR PLAN
- M-102 ENLARGED SECOND FLOOR PLAN
- M-103 ENLARGED THIRD FLOOR PLAN
- M-104 ENLARGED ROOF PLAN
- M-201 PHASING PLAN-FIRST FLOOR
- M-501 MECHANICAL DETAILS

ELECTRICAL SHEET INDEX:

- E100 LEGEND AND SCHEDULES
- E201 ENLARGED FIRST FLOOR PLAN
- E202 ENLARGED SECOND FLOOR PLAN
- E203 ENLARGED THIRD FLOOR PLAN
- E204 ENLARGED ROOF PLAN
- E900 ELECTRICAL SPECIFICATIONS
- E901 ELECTRICAL SPECIFICATIONS CONTINUED

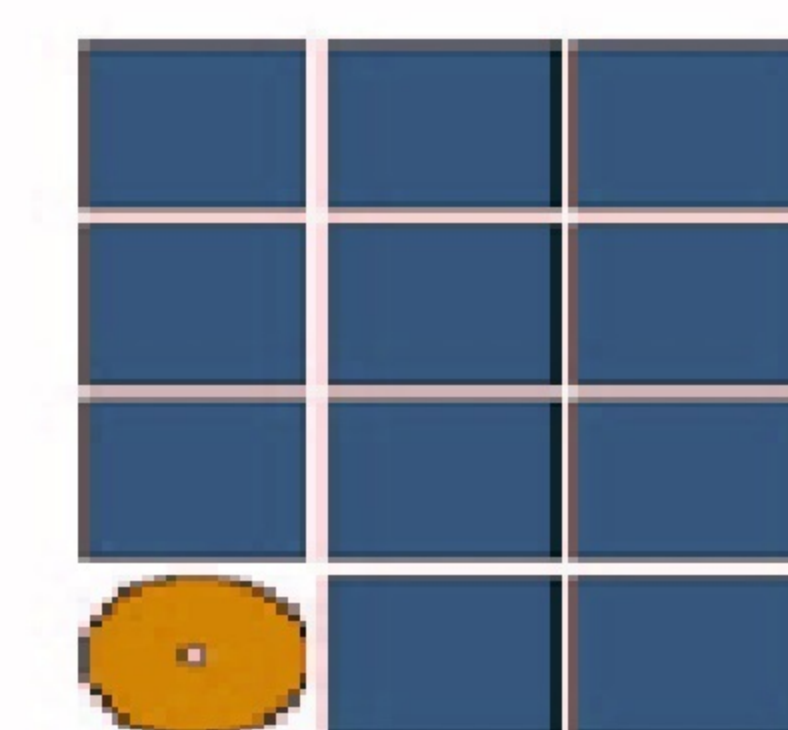
STRUCTURAL SHEET INDEX:

- S001 SLAB RETROFIT DETAIL

PREPARED BY:



175 South Franklin St, Suite 300 Juneau, Alaska 99801
Phone: 907.586.2100 | email: we@wileng.net



Jensen
Yorba
Wall Inc.



ENGINEERS, INC.



PLAN • DESIGN • CONSTRUCT
A R E S P E C C O M P A N Y
9109 Mendenhall Mall Rd. Ste. 4, Juneau, AK 99801
907.780.6060 | A E C C 6 0 5

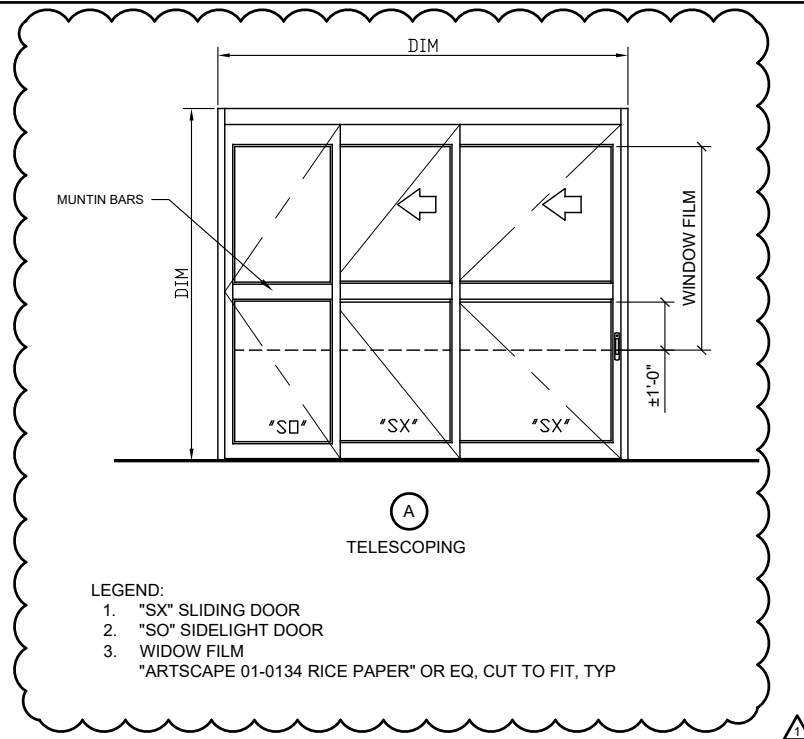


HAIGHT
& ASSOCIATES
CONSULTING
ELECTRICAL
ENGINEERS

526 Main Street
Juneau, Alaska 99801
(907) 586-9788

IF THIS BAR DOES NOT MEASURE EXACTLY ONE INCH, THE SCALE OF THIS DRAWING HAS BEEN ALTERED DURING ITS PRODUCTION, AFFECTING ALL LABELED SCALES.

DOOR TYPE



- LEGEND:**
1. "SX" SLIDING DOOR
 2. "SO" SIDELIGHT DOOR
 3. WIDOW FILM
- "ARTSCAPE 01-0134 RICE PAPER" OR EQ, CUT TO FIT, TYP

CODE DATA

BUILDING DATA

OCCUPANCY:	
LEVEL ONE	I-2
LEVEL TWO	A-2 (CAFETERIA)
LEVEL THREE	I-2
LEVEL FOUR	I-2 (MECHANICAL)
CONSTRUCTION TYPE: 1B (SPRINKLERED)	
AREA:	
LEVEL ONE	45,534 sf
LEVEL TWO	57,662 sf
LEVEL THREE	35,084 sf
LEVEL FOUR	629 sf
TOTAL: 138,909 sf (NO AREA INCREASE WITH THIS PROJECT)	

FIRE PROTECTION RATING OF BUILDING ELEMENTS

STRUCTURAL FRAMING:	
INCLUDING COLUMNS, GIRDERS, TRUSSES	2 HR
BEARING WALLS:	
EXTERIOR	2 HR
INTERIOR	2 HR
FLOOR CONSTRUCTION:	
INCLUDING SUPPORTING BEAMS & JOIST	2 HR
ROOF CONSTRUCTION	
INCLUDING SUPPORTING BEAMS & JOIST	
TYPICAL	1 HR
ROOF BELOW HELISTOP	2 HR
ROOF ABOVE NEW CENTRAL PLANT ADDITION	2 HR

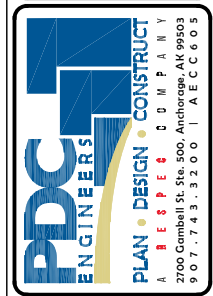
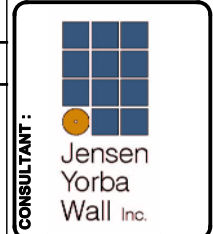
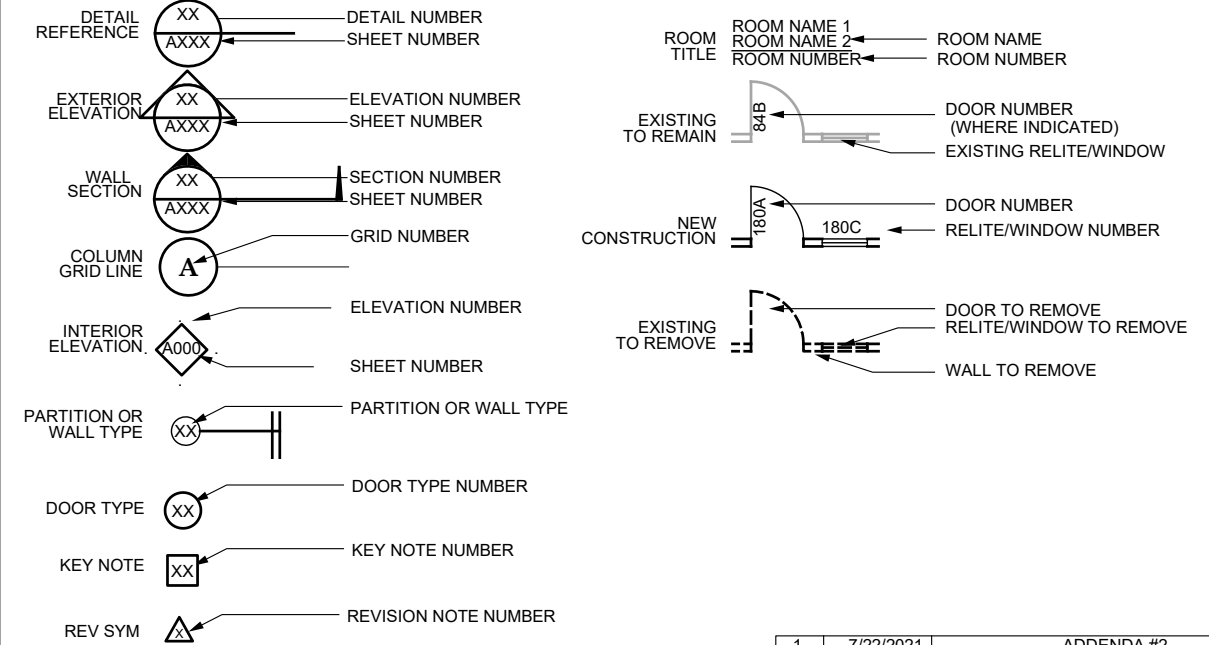
GENERAL NOTES

1. FIELD VERIFY ALL DIMENSIONS PRIOR TO PLACEMENT OF ORDERS
2. SEAL PERIMETER OF PARTITIONS & ALL PENETRATIONS FOR ALL WALLS & CEILINGS, TYPICAL
3. SEAL FLOOR AND ROOF PENETRATIONS FOLLOWING UL RATED TESTED ASSEMBLIES
4. PROVIDE BLOCKING FOR WALL MOUNTED FIXTURES AND ACCESSORIES, TYPICAL

ABBREVIATIONS

ACM	ASBESTOS CONTAINING MATERIAL	EJ	EXPANSION JOINT	HB	HOSE BIBB	OFCI	OWNER FURNISHED CONTRACTOR INSTALLED	SNR	SANITARY NAPKIN RECEPTACLE
ACP	ACOUSTICAL CEILING PANEL	EL	ELEVATION	HD	HAZARDOUS DRUGS	OFOI	OWNER FURNISHED OWNER INSTALLED	SQ	SQUARE
ADJ	ADJUSTABLE	ELEC	ELECTRICAL	HM	HOLLOW METAL	OFD	OVERFLOW DRAIN	SS	STAINLESS STEEL
AFF	ABOVE FINISH FLOOR	ELEV	ELEVATOR	HR	HORIZONTAL	OPNG	OPENING	STA	STATION
AIB	AIR FILTRATION BARRIER	EMER	EMERGENCY ENCLOSURE	HT	HEIGHT	OPFP	OPPOSITE	STC	SOUND TRANSMISSION CLASS STANDARD
AL	ALUMINUM	ENCL	ENCLOSURE	HT	HEIGHT	OSB	ORIENTED STRAND BOARD	STD	STANDARD
ARCH	ARCHITECTURAL	EPDM	ETHYLENE PROPYLENE DIANE MONOMER	HW	HOT WATER			STL	STEEL
ASB	ASBESTOS							STOR	STORAGE
BD	BOARD	EPS	EXPANDED POLYSTYRENE	ID	INSIDE DIAMETER	STRUC	STRUCTURAL	SUSP	SUSPENDED
BLDG	BUILDING	EQP	EQUIPMENT	INSUL	INSULATION	SY	SQUARE YARD		
BLKG	BLOCKING	EX	EXISTING	INT	INTERIOR	PL	PLATE	PLAM	PLASTIC LAMINATE
BM	BEAM	EXT	EXTERIOR			PLAS	PLASTER	PC	PRE-CAST
BOT	BOTTOM			JAN	JANITOR	PF	PRE-FINISHED	TC	TOP OF CURB
CAB	CABINET	FA	FIRE ALARM	JT	JOINT	PR	PAIR	TEL	TELEPHONE
CB	CATCH BASIN	FD	FLOOR DRAIN	LAB	LABORATORY	PWD	PLYWOOD	TEMP	TEMPORARY
CEM	CEMENT	FDN	FOUNDATION	LAM	LAMINATE			T&G	TONGUE & GROOVE
CG	CORNER GUARD	FEC	FIRE EXTINGUISHER CABINET	LAV	LAVATORY	R	RISER	TC	TOP OF CONCRETE
CLG	CEILING	FF	FINISH FLOOR	LT	LIGHT			TOD	TOP OF DECK
COL	COLUMN	FHC	FIRE HOSE CABINET			RD	RADIUS	TPD	TOILET PAPER DISPENSER
CONC	CONCRETE	FIN	FINISH	MIR	MIRROR	RD	ROOF DRAIN	TRD	TREAD
CONT	CONTINUOUS	FLASH	FLASHING	MAX	MAXIMUM	REFR	REFRIGERATOR	TRTD	PRESSURE TREATED
CTR	CENTER	FLR	FLOOR	MECH	MECHANICAL	REINF	REINFORCED	TOP OF WALL	TYPICAL
		FOC	FACE OF CONCRETE/CURB	MEMB	MEMBRANE	REQ	REQUIRED		
		FOF	FACE OF FINISH	MFR	MANUFACTURER	RESIL	RESILIENT		
		FOS	FACE OF STUD	MH	MANHOLE	RH	ROBE HOOK	UNF	UNFINISHED
		FRP	(GLASS) FIBER REINFORCED PLASTIC	MIN	MINIMUM	RL	RAIN LEADER	UNON	UNLESS OTHERWISE NOTED
				MISC	MISCELLANEOUS	RM	ROOM	UR	URINAL
		FR	FIRE RETARDANT	MTD	MOUNTED	RO	ROUGH OPENING		
		FT	FOOT OR FEET	MTL	METAL	RUB	RUBBER	VERT	VERTICAL
		FTG	FOOTING	MUL	MULLION			VEST	VESTIBULE
		FURR	FURRING			SASU	SELF ADHERING SHEET	VR	VAPOR RETARDER
				NIC	NOT IN CONTRACT	SCD	SEAT COVER DISPENSER	VTR	VENT THROUGH ROOF
		GA	GAUGE	NO OR #	NOMINAL	SFRM	SPRAYED FIRE-RESISTIVE MATERIAL	WB	WEATHER BARRIER
		GALV	GALVANIZED	NTS	NOT TO SCALE			WC	WATER CLOSET
		GB	GRAB BAR			SHR	SHOWER	WD	WOOD
		GL	GLASS	OA	OVERALL	SHTH	SHEATHING	WP	WATERPROOF
		GWB	GYP-SUM WALL BOARD	OC	ON CENTER	SIM	SIMILAR	WR	WASTE RECEPTACLE
EA	EACH	GYP	GYP-SUM	OD	OUTSIDE DIAMETER	SND	SANITARY NAPKIN DISPENSER	WSCT	WAINSCOT
EF	EXHAUST FAN								

SYMBOLS



PROJECT:
 BARTLETT ED VENTILATION IMPROVEMENTS
 JUNEAU, ALASKA

SHEET TITLE:
 SCHEDULES / CODE DATA
 CONSTRUCTION DOCUMENTS

DESIGN	DP
DRAWN	DP
CHECKED	CW
DATE	05/11/2021
PROJECT No. 21010JN	
SHEET NUMBER	

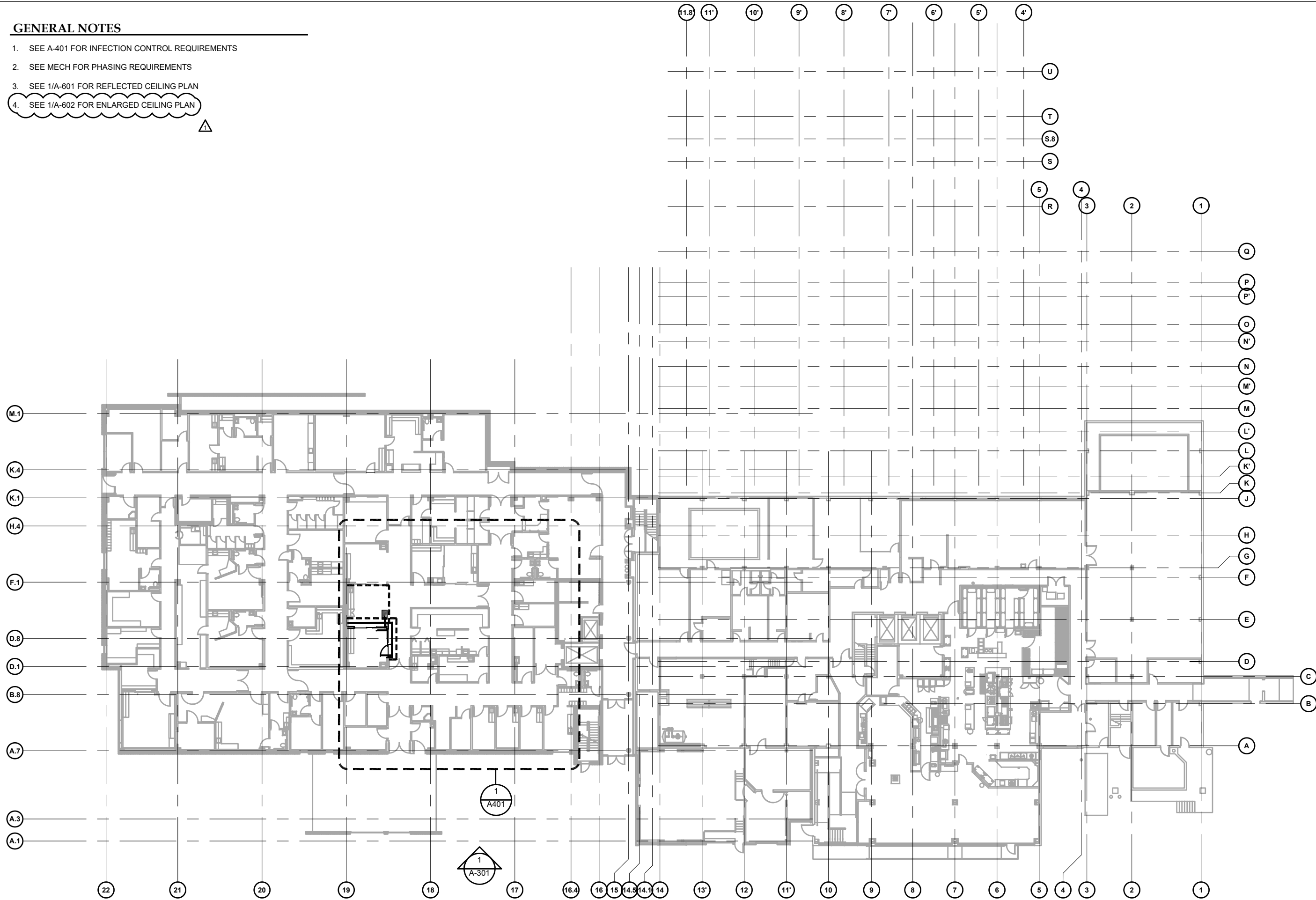
1	7/22/2021	ADDENDA #2
No.	Date	Item
REVISIONS		

A-001

IF THIS BAR DOES NOT MEASURE EXACTLY ONE INCH, THE SCALE OF THIS DRAWING HAS BEEN ALTERED DURING IT'S PRODUCTION, AFFECTING ALL LABELED SCA

GENERAL NOTES

1. SEE A-401 FOR INFECTION CONTROL REQUIREMENTS
2. SEE MECH FOR PHASING REQUIREMENTS
3. SEE 1/A-601 FOR REFLECTED CEILING PLAN
4. SEE 1/A-602 FOR ENLARGED CEILING PLAN

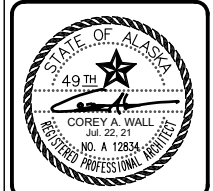
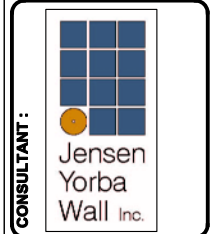


1 FIRST FLOOR OVERALL PLAN

SCALE: 0 8' 16' 32'

1	7/22/2021	ADDENDA #2
No.	Date	Item

REVISIONS



PROJECT: BARTLETT ED VENTILATION IMPROVEMENTS
 JUNEAU, ALASKA

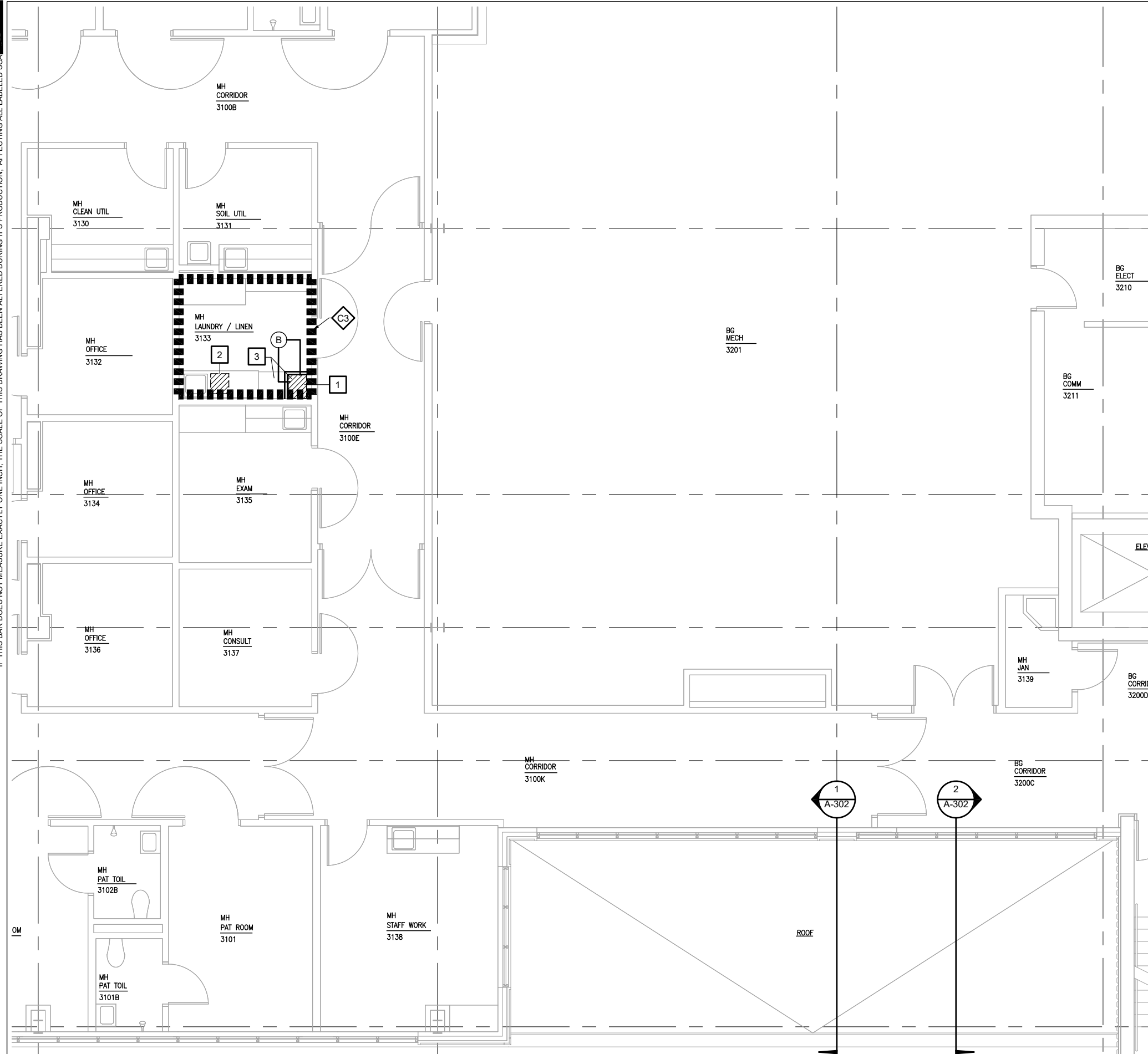
SHEET TITLE: FIRST FLOOR OVERALL PLAN
 CONSTRUCTION DOCUMENTS

DESIGN	DP
DRAWN	CW
CHECKED	
DATE	05/11/2021

PROJECT No. 21010JN
 SHEET NUMBER

A-201

IF THIS BAR DOES NOT MEASURE EXACTLY ONE INCH, THE SCALE OF THIS DRAWING HAS BEEN ALTERED DURING IT'S PRODUCTION, AFFECTING ALL LABELED SCA



1 ENLARGED THIRD FLOOR PLAN

SCALE: 0 2' 4' 8'



RENOVATION GENERAL NOTES:

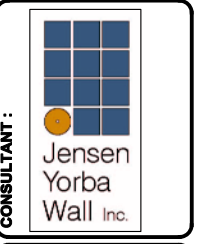
1. SEE MECH FOR PHASING OF WORK.
2. PROTECT EXIST CASEWORK AND EQUIPMENT DURING ALL PHASES OF WORK
3. REMOVE AND RE-INSTALL EXIST ACP FOR MECH WORK ABOVE CLG AS REQ'D. COORD WITH ELECT
4. PATCH SURFACES AT DEMO LOCATIONS. FINISH TO MATCH ADJACENT SURFACES
5. SEE MECHANICAL FOR DUCTS AND DUCT SUPPORTS

SHEET KEY NOTES:

- 1 SAW CUT OR CORE CONC THIRD FLOOR FOR MECH WORK, PATCH CONC SLAB AS REQ, PATCH SV FLOOR FINISH COORDINATE CONCRETE FLOOR PENETRATIONS AND SIZE FORE EXHAUST DUCTS WITH EXISTING INSLAB REINFORCEMENT TO AVOID CUTTING REINFORCEMENT BARS
- 2 SAW CUT OR CORE CONC ROOF ASSEMBLY ABOVE FOR MECH WORK, PATCH CONC SLAB AS REQ, REMOVE ROOFING ASSEMBLY ABOVE CONCRETE DECK AS REQ COORDINATE CONCRETE FLOOR PENETRATIONS AND SIZE FOR EXHAUST DUCTS WITH EXISTING INSLAB REINFORCEMENT TO AVOID CUTTING REINFORCEMENT BARS, SEAL DUCT PENETRATIONS AT 2HR FLOOR FOLLOWING HILTI C-AJ-7084 WITH FS-ONE MAX AND MINERAL WOOL PACKING MATERIAL, COORDINATE CONCRETE FLOOR PENETRATIONS WITH EXISTING IN-SLAB ELECTRICAL CONDUITS AND OTHER UTILITIES TO AVOID DAMAGING ANY IN-SLAB ELECTRICAL OR OTHER UTILITIES. CONTRACTOR IS RESPONSIBLE FOR DAMAGE AND REPAIRS TO ANY INSLAB UTILITIES
- 3 REMOVE AND SALVAGE EXISTING CASEWORK FOR REINSTALLATION, COORDINATE EXTENT OF CASEWORK MODIFICATION WITH MECHANICAL DUCT PENETRATION AND SCHEDULED TYPE "B" PARTITION AROUND DUCT, MODIFY CASEWORK BY CUTTING AND FITTING EXISTING CASEWORK CARCASE, SHELVES AND DOORS AS REQ, EXPOSED CUT EDGES TO BE EDGE BANDED WITH DOELLKEN BANDING TO MATCH EXISTING, FLOORING COVE BASE TO MATCH EXISTING AS SHOWN ON TYPE "B" PARTITION

INFECTION CONTROL NOTES :

- C1 ENCLOSE CONSTRUCTION AREA WITH TEMPORARY PARTITIONS
 - NON-COMBUSTIBLE CONSTRUCTION
 - TO UNDERSIDE OF CEILING
 - ABOVE CEILING SEALED WITH FIRE RESISTANT VISQUEEN TO UNDERSIDE OF FLOOR ASSEMBLY ABOVE
 - FINISHED TAPED & PAINTED ON PUBLIC SIDE
 - PROTECT FLOOR & CEILING FROM DAMAGE AT WALL CONNECTION
- C2 TEMP DOORS TO BE AUTO CLOSING WITH TIGHT SEAL
- C3 TEMPORARY ICRA DUST ENCLOSURE AROUND WORK AREAS AND PHASED WORK AREAS
 - REMOVE PROMPTLY UPON COMPLETION & CLEAN AREA FOR OCCUPANCY



PROJECT: BARTLETT ED VENTILATION IMPROVEMENTS
 JUNEAU, ALASKA

SHEET TITLE: ENLARGED THIRD FLOOR PLAN
 CONSTRUCTION DOCUMENTS

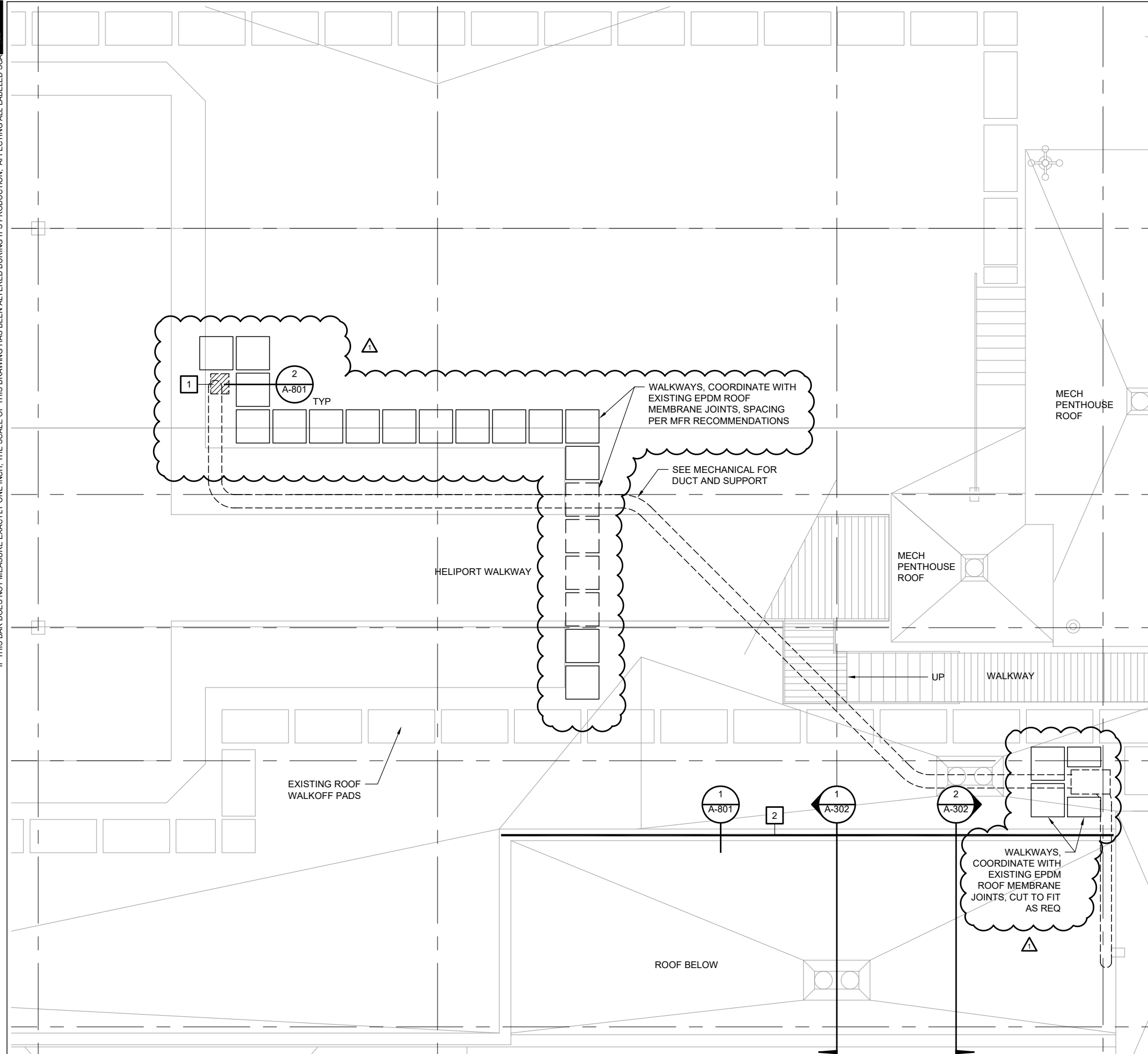
DESIGN	DP
DRAWN	CW
CHECKED	
DATE	05/11/2021

PROJECT No. 21010JN
SHEET NUMBER

1	7/22/2021	ADDENDA #2
No.	Date	Item
REVISIONS		

A-403

IF THIS BAR DOES NOT MEASURE EXACTLY ONE INCH, THE SCALE OF THIS DRAWING HAS BEEN ALTERED DURING IT'S PRODUCTION, AFFECTING ALL LABELED SCA



RENOVATION GENERAL NOTES:

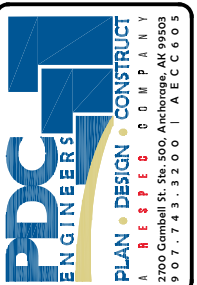
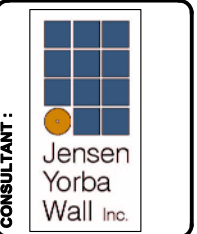
1. SEE MECH FOR PHASING OF WORK.
2. PROTECT EXIST CASEWORK AND EQUIPMENT DURING ALL PHASES OF WORK
3. REMOVE AND RE-INSTALL EXIST ACP FOR MECH WORK ABOVE CLG AS REQ'D. COORD WITH ELECT
4. PATCH SURFACES AT DEMO LOCATIONS. FINISH TO MATCH ADJACENT SURFACES
5. SEE MECHANICAL FOR DUCTS AND DUCT SUPPORTS

SHEET KEY NOTES:

- 1 SAW CUT OR CORE CONC ROOF DECK FOR MECH WORK, PATCH CONC SLAB AS REQ, COORDINATE CONCRETE DECK PENETRATIONS AND SIZE FOR EXHAUST DUCT WITH EXISTING INSLAB REINFORCEMENT TO AVOID CUTTING REINFORCEMENT BARS, CUT AND PATCH ROOF AS REQ'D FOR MECH WORK. SEE ROOF CURB DETAIL, EXISTING CONCRETE VARIES, SEAL DUCT PENETRATIONS AT 2HR FLOOR FOLLOWING HILTI C-AJ-7084 WITH FS-ONE MAX AND MINERAL WOOL PACKING MATERIAL, COORDINATE CONCRETE FLOOR PENETRATIONS WITH EXISTING IN-SLAB ELECTRICAL CONDUITS AND OTHER UTILITIES TO AVOID DAMAGING ANY IN-SLAB ELECTRICAL OR OTHER UTILITIES. CONTRACTOR IS RESPONSIBLE FOR DAMAGE AND REPAIRS TO ANY INSLAB UTILITIES
- 2 SAFETY RAIL
- 3 WALKWAYS: PRESSURE SENSITIVE WALKWAYS; FACTORY-FORMED, NONPOROUS, HEAVY-DUTY, SLIP-RESISTING, SURFACE-TEXTURED WALKWAY PADS, APPROXIMATELY .375 INCH (9 MM) THICK AND ACCEPTABLE TO ROOFING SYSTEM MANUFACTURER.
 1. SIZE: APPROXIMATELY 30 BY 30 INCHES (750 BY 750 MM).
 2. COLOR: BLACK.

INFECTION CONTROL NOTES :

- ◇C1 ENCLOSE CONSTRUCTION AREA WITH TEMPORARY PARTITIONS
 - NON-COMBUSTIBLE CONSTRUCTION
 - TO UNDERSIDE OF CEILING
 - ABOVE CEILING SEALED WITH FIRE RESISTANT VISQUEEN TO UNDERSIDE OF FLOOR ASSEMBLY ABOVE
 - FINISHED TAPED & PAINTED ON PUBLIC SIDE
 - PROTECT FLOOR & CEILING FROM DAMAGE AT WALL CONNECTION
- ◇C2 TEMP DOORS TO BE AUTO CLOSING WITH TIGHT SEAL
- ◇C3 TEMPORARY ICRA DUST ENCLOSURE AROUND WORK AREAS AND PHASED WORK AREAS
 - REMOVE PROMPTLY UPON COMPLETION & CLEAN AREA FOR OCCUPANCY



PROJECT :
 BARTLETT ED VENTILATION IMPROVEMENTS
 JUNEAU, ALASKA

SHEET TITLE :
 ENLARGED ROOF PLAN
 CONSTRUCTION DOCUMENTS

DESIGN	DP
DRAWN	DP
CHECKED	CW
DATE	05/11/2021

PROJECT No. 21010JN
SHEET NUMBER

A-404

1 ENLARGED ROOF PLAN

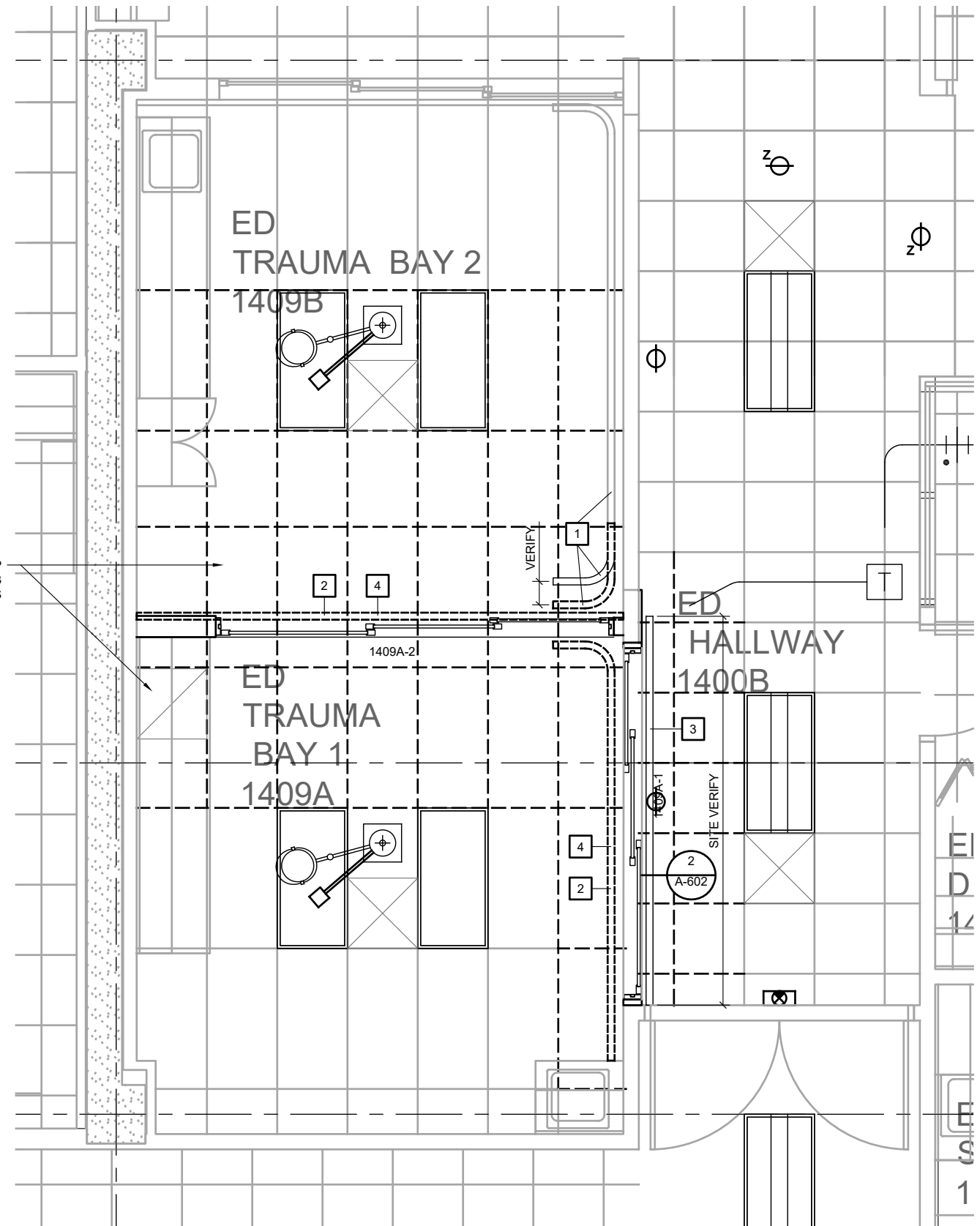
SCALE: 0 2' 4' 8'



1	7/22/2021	ADDENDA #2
No.	Date	Item

REVISIONS

IF THIS BAR DOES NOT MEASURE EXACTLY ONE INCH, THE SCALE OF THIS DRAWING HAS BEEN ALTERED DURING IT'S PRODUCTION, AFFECTING ALL LABELED SCA



1 FIRST FLOOR - PARTIAL ENLARGED REFLECTED CEILING PLAN

SEE 1/A-601 FOR ADDITIONAL INFORMATION

SCALE: 0 2' 4' 8'

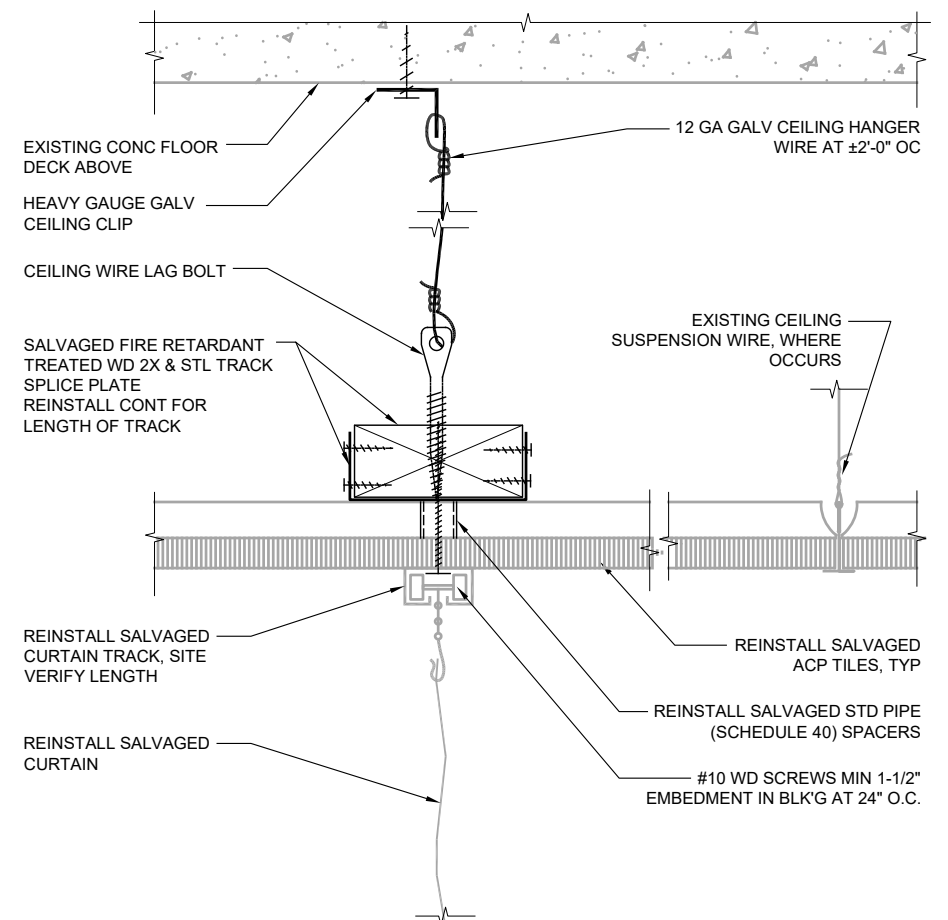
RCP GENERAL NOTES:

1. REMOVE AND REINSTALL CEILING MOUNTED EQUIPMENT AS REQ'D. COORD W/ ELECT
2. REMOVE AND RE-INSTALL EXIST ACP FOR MECH WORK ABOVE CLG AS REQ'D. COORD WITH ELECT
3. PATCH SURFACES AT DEMO LOCATIONS. FINISH TO MATCH ADJ SURFACE

SHEET KEY NOTES:

- 1** EXISTING CUBICAL CURTAIN AND TRACK TO REMAIN, CUT AND RELOCATE END AS REQ TO CLEAR PARTITION TYPE "A" AT DOOR 140A-2, TRAUMA BAY 2
- 2** EXISTING CUBICAL CURTAIN AND TRACK, REMOVE AND SALVAGE FOR REINSTALLATION, REMOVE AND SALVAGE ABOVE CEILING SUSPENSION SYSTEM FOR REINSTALLATION UNUSED SALVAGED TRACKS AND CURTAINS TO BE TURNED OVER TO THE OWNER
- 3** REMOVE AND SALVAGE EXISTING ACP CEILING PANELS FOR REINSTALLATION, REINSTALL SALVAGED CUBICAL CURTAIN, TRACK, SUSPENSION SYSTEM, REINSTALL SALVAGED ACP CEILING PANELS
- 4** ACP, SEE GENERAL NOTES ABOVE WHERE ACP CEILING TILES HAVE HAD CUBICAL CURTAIN TRACK HOLES PLACED FOR EXISTING SUSPENSION SYSTEM AND ACP TILES ARE NOT SALVAGEABLE FOR REINSTALLATION REPLACE TILES TO MATCH EXISTING

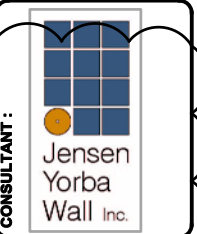
ACP CEILING TILE:
 ARMSTRONG; "CLEAN ROOM MYLAR #1716";
 SIZE: 24 BY 48 INCHES BY 3/4 INCH THICK.
 NOISE REDUCTION COEFFICIENT: MINIMUM NRC 0.55 (WITH "ACOUSTIBOND" SOUND BACKER).
 CEILING SOUND TRANSMISSION CLASS: MINIMUM CAC 35.
 EDGE PROFILE: SQUARE.
 COLOR: WHITE.
 FINISH: SOIL RESISTANT POLYESTER FILM.



2 CUBICLE TRACK AT CLG

20050/X_A602-2

SCALE: 0 3' 6"



PROJECT: BARTLETT ED VENTILATION IMPROVEMENTS
 JUNEAU, ALASKA

SHEET TITLE: PARTIAL REFLECTED CEILING PLANS
 CONSTRUCTION DOCUMENTS

DESIGN	DP
DRAWN	CW
CHECKED	CW
DATE	05/11/2021

PROJECT No. 21010JN
 SHEET NUMBER

A-602

No.	Date	Item
1	7/22/2021	ADDENDA #2