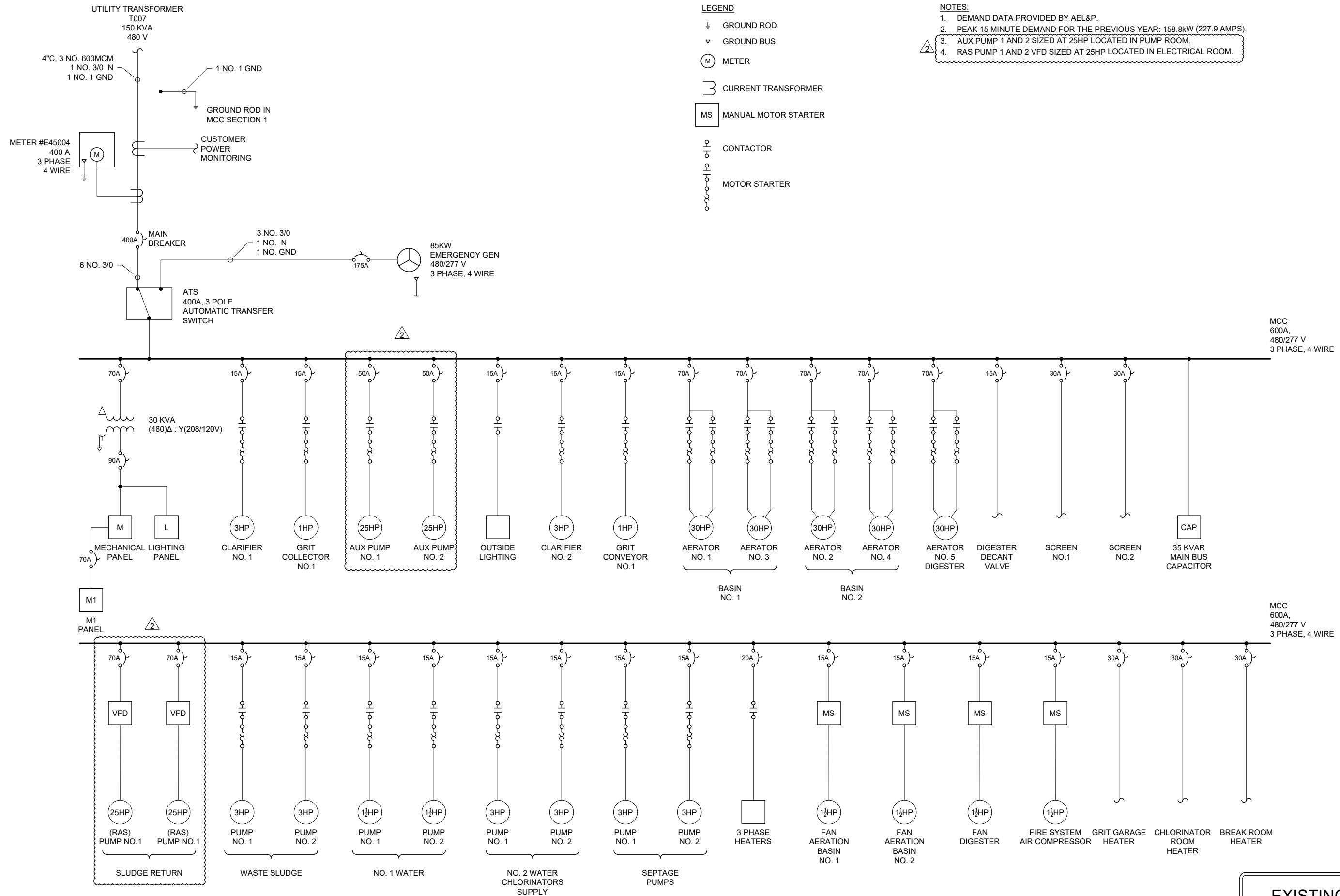


# Addendum No. 1



- LEGEND**
- ⊥ GROUND ROD
  - ▽ GROUND BUS
  - (M) METER
  - ⎓ CURRENT TRANSFORMER
  - MS MANUAL MOTOR STARTER
  - ⎓ CONTACTOR
  - ⎓ MOTOR STARTER

- NOTES:**
1. DEMAND DATA PROVIDED BY AEL&P.
  2. PEAK 15 MINUTE DEMAND FOR THE PREVIOUS YEAR: 158.8kW (227.9 AMPS).
  3. AUX PUMP 1 AND 2 SIZED AT 25HP LOCATED IN PUMP ROOM.
  4. RAS PUMP 1 AND 2 VFD SIZED AT 25HP LOCATED IN ELECTRICAL ROOM.



**JUNEAU DOUGLAS TREATMENT PLANT**  
**ELECTRICAL UPGRADES**  
 CBJ CONTRACT No. BE21-141  
 ONE LINE (EXISTING)  
 JUNEAU, AK

1	05/21		1
2	06/21		2
3			
4			
5			
6			
NO	DATE	REVISION	NO

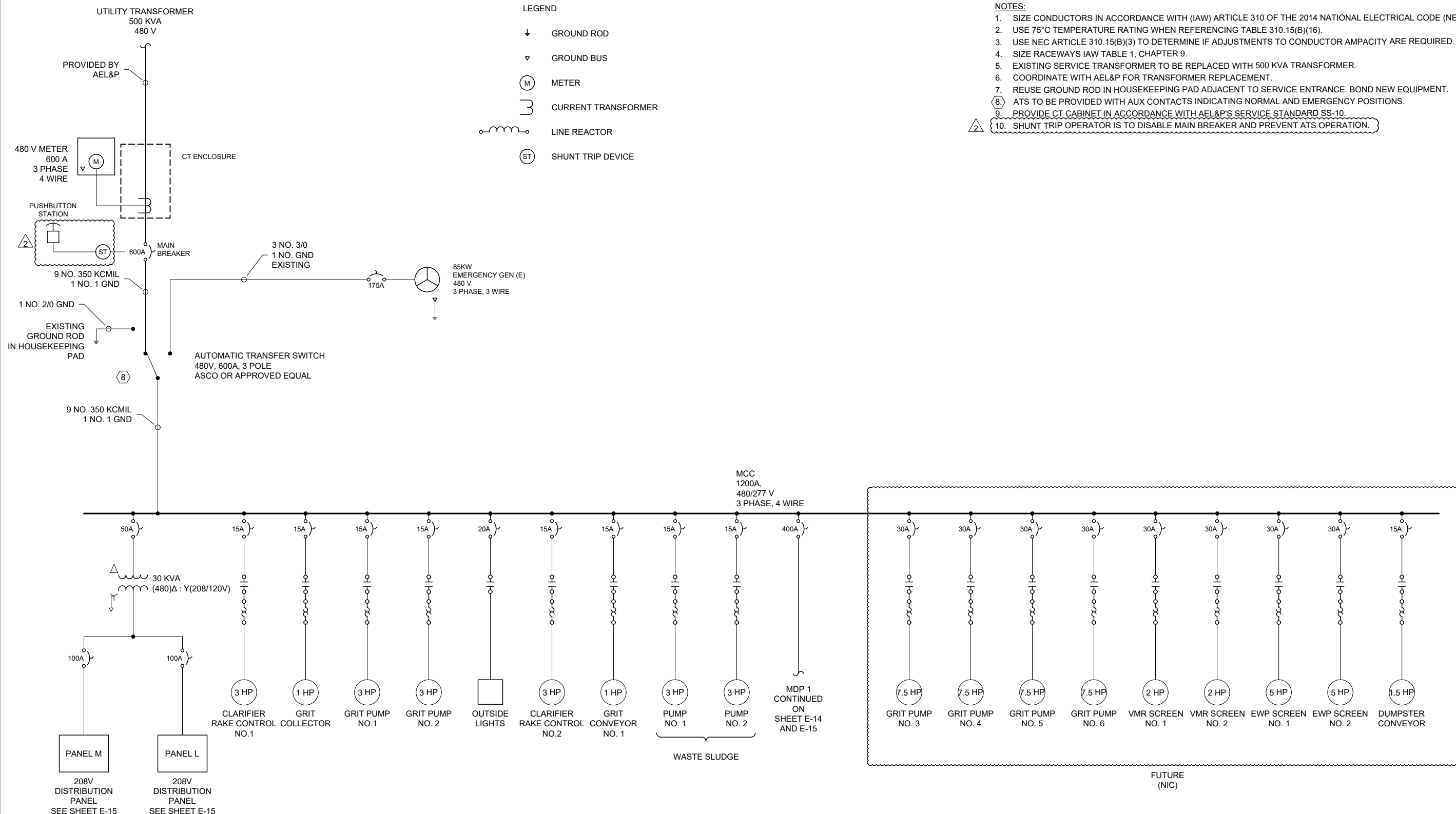


ENGINEER: VAM  
 CHECKED BY: BR  
 JOB #: J000472  
 DRAWN BY: PP  
 SCALE: N/A  
 DATE: 01/15/21

DRAWING #:  
**E-06**  
 SHEET  
**06** OF **21**

EXISTING

# Addendum No. 1



### LEGEND

- ↓ GROUND ROD
- ▽ GROUND BUS
- (M) METER
- ⊃ CURRENT TRANSFORMER
- ⊂ LINE REACTOR
- (ST) SHUNT TRIP DEVICE

### NOTES:

1. SIZE CONDUCTORS IN ACCORDANCE WITH (IAW) ARTICLE 310 OF THE 2014 NATIONAL ELECTRICAL CODE (NEC).
2. USE 75°C TEMPERATURE RATING WHEN REFERENCING TABLE 310.15(B)(16).
3. USE NEC ARTICLE 310.15(B)(3) TO DETERMINE IF ADJUSTMENTS TO CONDUCTOR AMPACITY ARE REQUIRED.
4. SIZE RACEWAYS IAW TABLE 1, CHAPTER 9.
5. EXISTING SERVICE TRANSFORMER TO BE REPLACED WITH 500 KVA TRANSFORMER.
6. COORDINATE WITH AEL&P FOR TRANSFORMER REPLACEMENT.
7. REUSE GROUND ROD IN HOUSEKEEPING PAD ADJACENT TO SERVICE ENTRANCE. BOND NEW EQUIPMENT.
8. ATS TO BE PROVIDED WITH AUX CONTACTS INDICATING NORMAL AND EMERGENCY POSITIONS.
9. PROVIDE CT CABINET IN ACCORDANCE WITH AEL&P'S SERVICE STANDARD SS-10.
10. SHUNT TRIP OPERATOR IS TO DISABLE MAIN BREAKER AND PREVENT ATS OPERATION.



**JUNEAU DOUGLAS TREATMENT PLANT**  
**ELECTRICAL UPGRADES**  
 CBJ CONTRACT No. BE21-141  
**ONE LINE (NEW)**  
 JUNEAU, AK

1	05/21		1
2	06/21		2
3			
4			
5			
6			
NO	DATE	REVISION	NO



ENGINEER: VAM      CHECKED BY: BR  
 JOB #: J000472      DRAWN BY: PP  
 SCALE: N/A      DATE: 01/15/21

DRAWING #:  
**E-13**  
 SHEET  
**13 OF 21**

NEW

# Addendum No. 1

CONTINUED FROM SHEET E-13

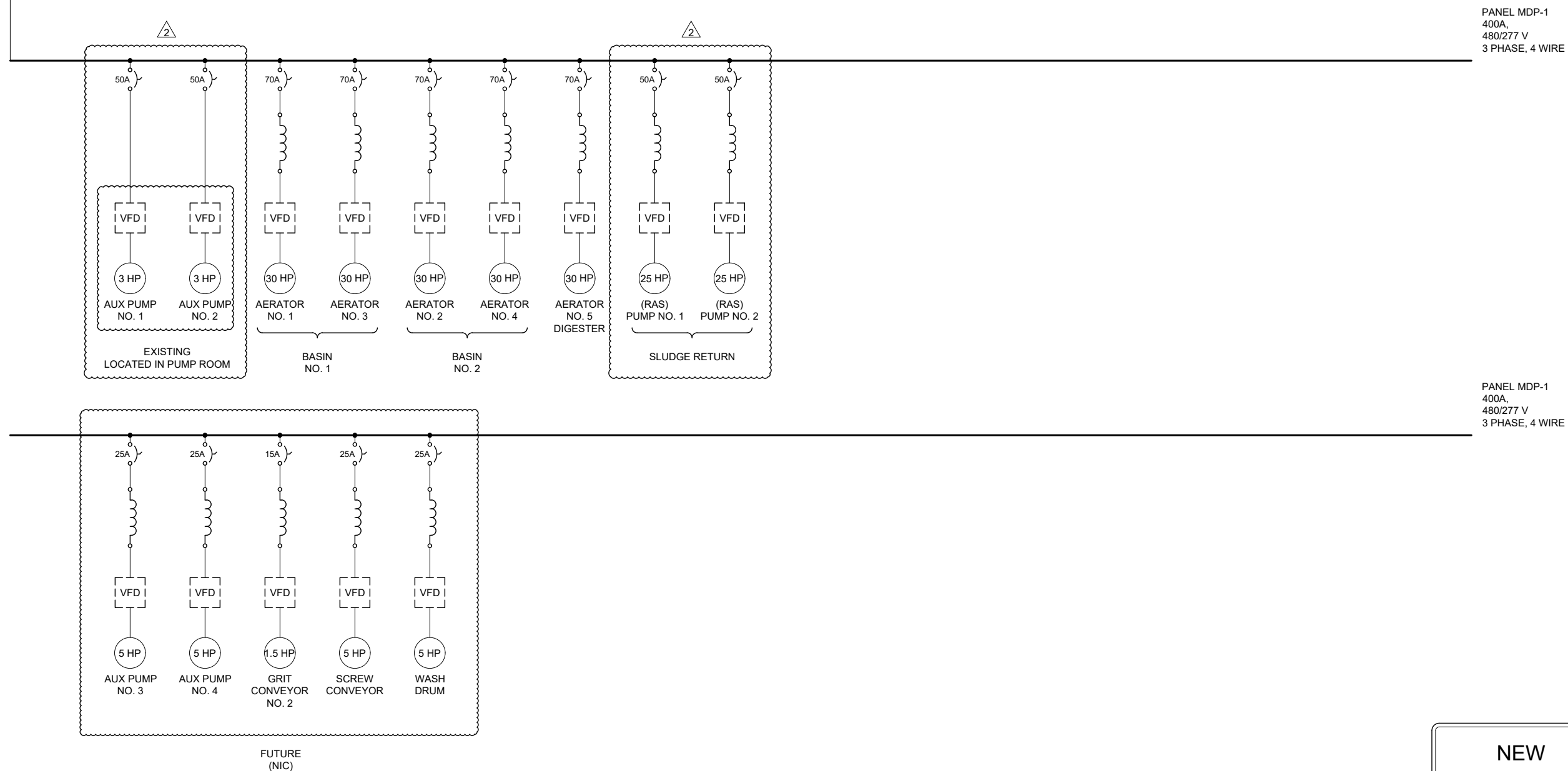
MCC 1  
480 V  
4°C, 3 NO. 600MCM  
1 NO. 3/0 N  
1 NO. 1 GND

### LEGEND

- ⊥ GROUND ROD
- ▽ GROUND BUS
- (M) METER
- ⎓ CURRENT TRANSFORMER
- ⎓ LINE REACTOR
- (ST) SHUNT TRIP DEVICE

### NOTES:

1. FOR FULL PANEL SCHEDULE SEE SHEET E-15
2. AUX PUMP NO.1 AND NO.2 WILL REMAIN UNDISTURBED.
3. AUX PUMP VFDS WILL REMAIN INPLACE LOCATED IN PUMP ROOM, CIRCUIT PROTECTION SIZED AT 25HP.
4. NEW RAS PUMP VFDS AND CIRCUIT PROTECTION SIZED AT 25HP.



PANEL MDP-1  
400A,  
480/277 V  
3 PHASE, 4 WIRE

PANEL MDP-1  
400A,  
480/277 V  
3 PHASE, 4 WIRE



**JUNEAU DOUGLAS TREATMENT PLANT  
ELECTRICAL UPGRADES**  
CBJ CONTRACT No. BE21-141  
MDP-1 ONE LINE (NEW)  
JUNEAU, AK

1	05/21		1
2	06/21		2
3			
4			
5			
6			
NO	DATE	REVISION	NO



ENGINEER: VAM  
JOB #: J000472  
SCALE: N/A  
CHECKED BY: BR  
DRAWN BY: PP  
DATE: 01/15/21

DRAWING #:  
**E-14**  
SHEET  
**14** OF **21**

**NEW**