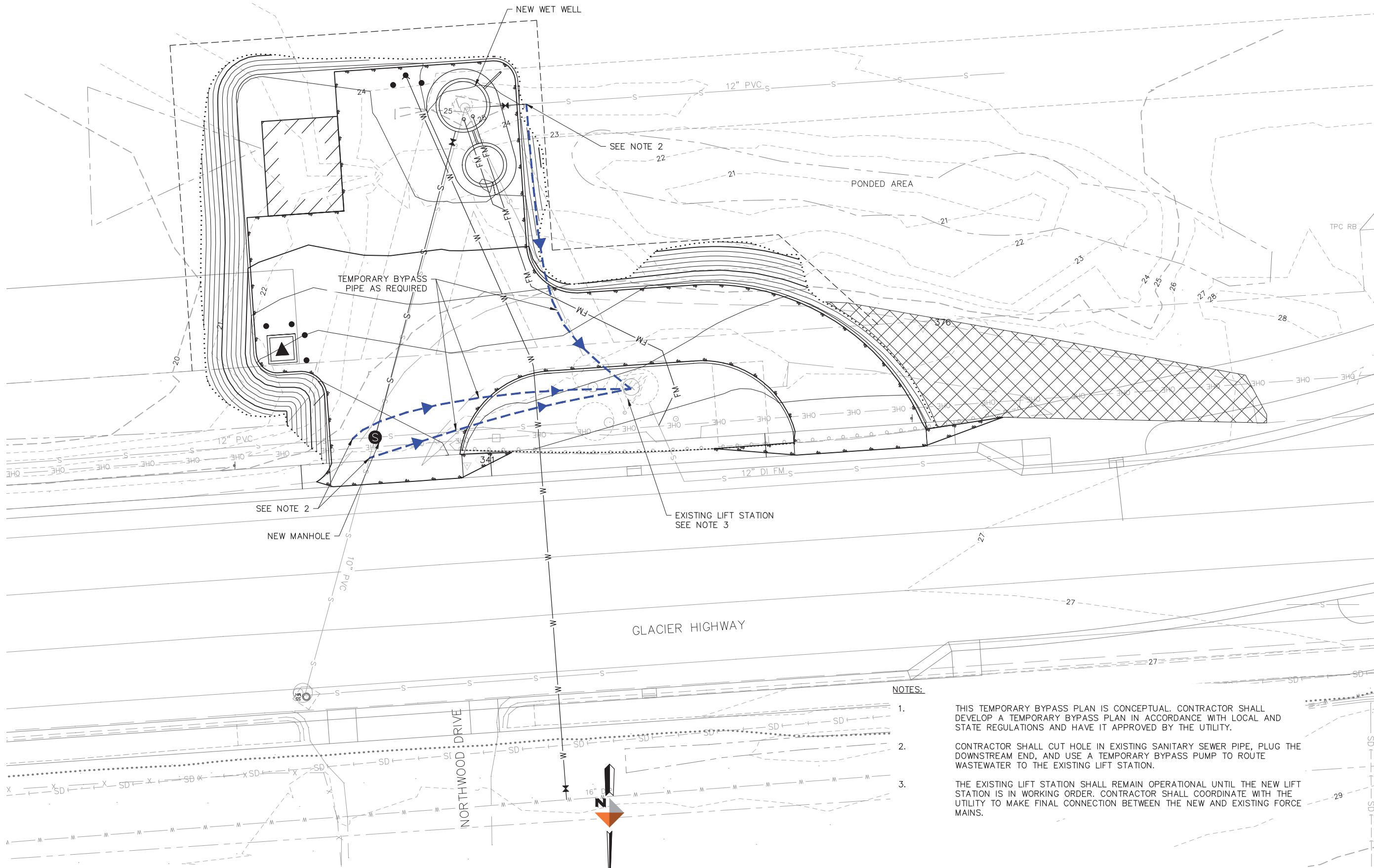


BYPASS PUMPING PLAN

C:\Civil\3D Projects\2016\29\50081-01\Civil\SC-CS-SI-GR-50081-01.dwg PLOT DATE: 2018-10-19 13:23 SAVED DATE: 2018-10-12 16:57 USER: thogins



TEMPORARY BYPASS PLAN



NOTES:

1. THIS TEMPORARY BYPASS PLAN IS CONCEPTUAL. CONTRACTOR SHALL DEVELOP A TEMPORARY BYPASS PLAN IN ACCORDANCE WITH LOCAL AND STATE REGULATIONS AND HAVE IT APPROVED BY THE UTILITY.
2. CONTRACTOR SHALL CUT HOLE IN EXISTING SANITARY SEWER PIPE, PLUG THE DOWNSTREAM END, AND USE A TEMPORARY BYPASS PUMP TO ROUTE WASTEWATER TO THE EXISTING LIFT STATION.
3. THE EXISTING LIFT STATION SHALL REMAIN OPERATIONAL UNTIL THE NEW LIFT STATION IS IN WORKING ORDER. CONTRACTOR SHALL COORDINATE WITH THE UTILITY TO MAKE FINAL CONNECTION BETWEEN THE NEW AND EXISTING FORCE MAINS.

AGENCY SUBMITTAL

REV	DATE	DESCRIPTION	BY



DOWL
AECL848
www.dowl.com
3535 College Road, #100
Fairbanks, Alaska 99709
907-374-0275

GRUENING PARK LIFT STATION
RELOCATION
JUNEAU, ALASKA
TEMPORARY BYPASS PLAN

PROJECT 1529.50081.01
DATE 10/12/2018

© DOWL 2017