



**PARKS & RECREATION ADVISORY COMMITTEE
MEETING AGENDA
TUESDAY, MARCH 2, 2021
5:30 P.M.
ZOOM WEBINAR**

This meeting will take place virtually via **Zoom Webinar**. To join the Zoom Webinar, go to <https://juneau.zoom.us/j/94184441385> or call: 1 253-215-8782. **Webinar ID: 941 8444 1385**. Members of the public wishing to provide public comment during the meeting can do so by clicking the “Raise Hand” button (online Zoom Webinar) or press *9 (telephone).

Agenda Item	Presenter	Action Requested
I. Call to Order	C. Mertl	
II. Approval of Agenda Agenda Changes	C. Mertl	<i>If no changes: Motion to approve</i>
III. Approval of Minutes Meeting of December 1, 2020 Meeting of January 5, 2021 Meeting of February 2, 2021	C. Mertl	<i>If no changes: Motion to approve</i>
IV. Public Participation on Non-Agenda Items	C. Mertl	
V. New Business 2020 Annual Report Fish Creek Park Habitat Improvements Glacier Valley Rotary Club Proposal for Riverside Rotary Park	C. Mertl John Hudson M. Elfers	
VI. Unfinished Business		
VII. Staff Reports ORV Working Group Update Montana Creek Recreation Area Master Plan	M. Elfers M. Elfers	
VIII. Committee, Liaison, and Board Member Reports Chair Report Liaison to the Assembly Board Member Liaisons Other Board Member Business	C. Mertl Wade Bryson Liaisons All	
IX. Adjournment	C. Mertl	



TO: Parks & Recreation Advisory Committee
FROM: George Schaaf, Parks & Recreation Director
DATE: February 25, 2021
RE: March 3, 2021 Meeting

DIRECTOR'S REPORT

Please find enclosed the information supporting your agenda topics for this meeting. The meeting is anticipated to last 60 minutes and will take place via **Zoom Webinar**. To join the Zoom Webinar, go to <https://juneau.zoom.us/j/94184441385> or call 1-253-215-8782. **Webinar ID:** 941 8444 1385.

NEW BUSINESS

A. 2020 Annual Report – Requested by C. Mertl [Page 6-9]

Pursuant to Assembly Resolution No. 2646, the Parks & Recreation Advisory Committee reports to the Assembly on all aspects of juvenile and adult recreation in the City & Borough. This annual report is prepared by the Chair and summarizes the activities of the Committee.

SUGGESTED MOTION:

The Parks & Recreation Advisory Committee approves the Annual Report and transmits it to the Assembly.

B. Fish Creek Park Habitat Improvements – Requested by M. Elfers

The Southeast Alaska Watershed Coalition (SAWC) has approached the Parks & Recreation Department to collaborate on habitat and recreational improvements at Fish Creek Park. Fish Creek Park is located in North Douglas, and is classified in the Department's Master Plan as a Semi-Primitive Area:

Semi-Primitive Area: An area left predominantly in its natural state with minimal to moderate evidence of the sights and sounds of people. Activities are primarily unstructured types of recreation with high potential for interaction with the natural environment. Concentration of users may be low to moderate. These areas vary in size and are meant to serve the entire community.

SAWC has worked with CBJ and the Alaska Department of Fish and Game to understand the management and issues for this area and proposes a public outreach program with master plan development to begin addressing habitat and recreational needs. This request is consistent with

the management intent of this property according to the Department's Master Plan. I request that you recommend the Department move forward with this proposal.

SUGGESTED MOTION:

The Parks & Recreation Advisory Committee recommends that the Department cooperate on a master planning process and future design development planning with the Southeast Alaska Watershed Coalition to improve fish and wildlife habitat at Fish Creek Park.

C. Glacier Valley Rotary Club Proposal for Riverside Rotary Park – Requested by M. Elfers [Page 10-13]

The Glacier Valley Rotary Club has proposed implementing elements of the Riverside Rotary Park Master Plan including constructing a new picnic shelter at Riverside Rotary Park, relocating the existing shelter, and improving the 9/11 memorial. The Parks & Recreation Department would provide matching funds for these improvements and Rotary volunteers would participate in construction.

Riverside Rotary Park is located on Riverside Drive and is classified as a Neighborhood Park in the Department's Master Plan. Picnic shelters and other amenities for day use are consistent with the management intent for the property. Rotarians were instrumental in the development of Riverside Rotary Park, as well as several other parks throughout Juneau. I request that you recommend the Department approve this project.

SUGGESTED MOTION:

The Parks & Recreation Advisory Committee recommends that the department partner with the Glacier Valley Rotary Club to improve the park shelters and 9/11 memorial and fund \$35,000 of the required work.

UNFINISHED BUSINESS

None.

STAFF REPORTS

A. ORV Working Group Update – Presented by M. Elfers

B. Montana Creek Recreation Area Master Plan – Presented by M. Elfers

C. Operations Update – Presented by G. Schaaf

The following summary of projects, programs, and activities over the last month is provided at the request of the Chair:

- **CIP Update** – The Planning Commission reviewed the draft FY22 Capital Improvement Plan (CIP) at its meeting on February 23. The Assembly Public Works and Facilities Committee will review the CIP on March 15. Dates have not been set for the CIP to move to the Finance Committee or full Assembly.

- **Amalga Cabin** – Demand for the Amalga Cabin continues to be extremely strong, with new dates typically taken within a few minutes of becoming available. Staff continue to wrap up minor items, including signage and a new door. The cold weather resulted in higher than expected propane usage (about 25 gallons per week). We are evaluating options to install and fill a larger propane tank to reduce service frequency.
- **Winter Pass** – This year we offered a \$99 Winter Pass that allowed unlimited use of both pools through April 30. Sales significantly exceed expectations, with over \$18,000 in new revenue.
- **Youth Services** – Zach Gordon Youth Center continues to offer a variety of afterschool programs, including ice skating at Treadwell Arena, Survival Skills Training, Winter Crafts, and Socially Distant Games. We are also screening anime & serving up pizza every Saturday night through March. Other programs include events for BIPOC teens, bowling at Pinz, and abstract painting with Spicy Water.

The new Youth Shelter is making rapid progress, with staff from Zach Gordon and Tlingit-Haida Regional Housing Authority making improvements to the facility on Hurlock Ave. Staff worked with UAS Professor Lance Twitchell to create a name for the facility: “Shéiyi xaat hít,” which means “Spruce Root House.” The name will be formally announced later this spring.

- **Community Recreation Programs** – The third and final round of Clue wrapped up on February 21st. We received nearly **300** accusations in the series in what turned out to be one of our most popular programs of the year. Other activities included a sold-out evening of Drive-In Bingo at Zach Gordon Youth Center and a Virtual Snow Sculpture Contest (that one only got three entries, so everyone was a winner!).

Future events include a matching game highlighting the launch of the Juneau Voices Audio Walk, as well as creating three “story paths” on area trails in partnership with the Juneau Education Association and Juneau Public Libraries. The first StoryPath which will be March 5-7 at Overstreet Park seawalk featuring the 2021 Caldecott Medal winner *We Are Water Protectors* illustrated by local artist Michaela Goade. Our next Drive-In Movie will be *Jumanji: Welcome to the Jungle* at Savikko Park on February 26th and *Matilda* at Savikko Park on March 13th.



In between, our Recreation staff have been busy supporting EOC operations by creating signage, advertising, and printed material for COVID-19 vaccination clinics at Centennial Hall.

- **Treadwell Arena** – With the Community Risk Level dropping to “Minimal,” Treadwell Arena increased its capacity to 28 skaters. Admission is a flat \$5 for all activities and includes skate rental. Reservations are required.
 - Public Open Skate every Wednesday from 10:45 a.m. to 11:45 a.m.
 - Public Open Skate every Friday from 3 p.m. to 4 p.m.
 - Stick n’ Puck (hockey) every Friday from 1:15 p.m. to 2:15 p.m.

- **Aquatics**

With the Community Risk Level dropping to “Minimal,” Dimond Park Aquatic Center increased capacity to 80 guests and Augustus Brown increased capacity to 50 guests on March 1. Lap lanes also are no longer limited to a single household. Spray features will also be returning to DPAC once they pass inspection, and slides will become available once we are able to add more staff to the schedule. Instructional programs, including swim lessons, will resume once staff become eligible to receive COVID-19 vaccine.

- **Dimond Park Field House** – We are continuing to prepare for Parks & Recreation to assume management of the Dimond Park Field House. The next step is to finalize paperwork documenting the transfer of the facility (likely in the next two weeks). Current Eaglecrest staff will be offered the opportunity to accept new positions with Parks & Recreation. Until the transition is final, we are working with Eaglecrest on operational aspects, including schedules.

- **Commercial Use Permit Applications** – Applications for Commercial Use will be accepted beginning March 1st through June 30th. Due to the COVID-19 pandemic, we are offering an extended application period so operators can evaluate their season before applying.



PARKS & RECREATION ADVISORY COMMITTEE

TUESDAY, DECEMBER 1, 2020 – 5:30 PM

Zoom Webinar

I. Call to Order at 5:31 p.m. – C. Mertl, Chair

Present: Josh Anderson, Alex Beebe-Giudice, Edric Carrillo, Ron Crenshaw, Kirk Duncan, Chris Mertl, Emily Palmer, Tom Rutecki

Absent: Will Muldoon

Staff Present: George Schaaf, Director; Michele Elfers, Deputy Director; Lauren Verrelli, Staff Liaison

II. Agenda Changes – None

III. Approval of Meeting Minutes – None

IV. Public Participation on Non-Agenda Items – None

V. New Business –

A. Capital Improvement Program

G. Schaaf: The current FY21 Parks & Rec CIP identified a total of \$81.4 million in projects. Each year, there is only about \$1.5 million available citywide for general CIP projects, of which Parks & Rec typically receives about \$550,000. Additional funding also comes from the temporary 1% sales tax and the sale of municipal bonds.

M. Elfers: This summer we completed the trail to the Amalga Cabin and the Horse Tram Trail, as well as working on plans to replace the bridge over the creek near the EVC. Various upgrades and improvements we are working on/planning include the Point Caroline Trail, Perseverance, Christopher Trail, Outer Point and Switzer-Marriot Trail. We completed the first phase of the Kax Trail this past summer, with more phases planned in the coming years. Coming up this spring, we will have Chicken Yard Park reconstruction, waterline maintenance work at Adair Kennedy, Eagles Edge playground design and reconstruction and Capital School Park playground is currently in the design phase and will be completed next summer. The Savikko Fields closest to the beach will receive some drainage work this summer for phase one, then phase two will be to turf over the outfield in the future.

C. Mertl: What is the difference between division priority and department priority?

G. Schaaf: Division priority reflects the priority within a division, like the Aquatics Division or the Park Maintenance division. Once I get all the priorities from the division heads, then I put them together and rank them in priority order for the department. At the January PRAC meeting, we will have finalized our plan and would like to incorporate any suggestions the PRAC have into that plan.

M. Elfers: We have heard from different user groups on items such as adult fitness parks, specifically for the aging locals, another pump track in the valley, a downtown skateboard park and a secondary trail that runs parallel to the Montana Creek Road.

E. Palmer: I like the idea for the fitness equipment. The communities I have been in that have them they are a huge draw for all ages.

A. Beebe-Giudice: With the Montana Creek issue, I think it is an awesome idea to run a parallel trail. Considering the amount of interest we have heard from the motorize folks, it would be nice to see some development and construction expenses included on the 6-year budget for creating an area for motorized users.

K. Duncan: Does it make sense to make a subcommittee to dig deeper into recommendations? They could analyze the CIP, discuss the department's recommendations, and present a statement to the Assembly.

C. Mertl: A subcommittee makes sense since we only have a month to give a recommendation. K. Duncan, A. Beebe-Giudice, J. Anderson and myself will be on the subcommittee that will meet soon.

VI. Unfinished Business – None

VII. Information Items –

A. CivicRec

L. Verrelli: We are transitioning from eTrak to our new point-of-sale system CivicRec. CivicRec will have a seamless look between our website and our online registration. Individuals will be able to register for programs, rent shelters and the Amalga Cabin, and change their own passwords and more from the comfort from their homes. CivicRec also has an app for folks to process transactions. We will be transitioning to CivicRec by the end of the month internally and make it live for the public early January.

A. Beebe-Giudice: Has rates increased to cover the cost of the new system or did the department absorb it?

G. Schaaf: The credit card processing fee and the Civic Rec fee are built into our pricing but the public will pay the sales tax.

B. Operations Update

G. Schaaf: *Can be found in the [director's report](#).*

VIII. Committee, Liaison, and Board Member Reports

A. Chair Report— None

B. Liaison to the Assembly Report— Moved the Eagles Edge Park along and accepted the \$100,000. Great the PRAC will be making a recommendation to the Assembly on the CIPs.

C. Liaison Reports—

Aquatics – W. Muldoon: Accepted Engineering recommendations on budget reallocations for Centennial Hall project. Daily operations going well; looking forward to CivicRec.

YAB – J. Anderson: Two new members including myself. Reviewed the grant application.

Eaglecrest – E. Palmer: Finalized COVID mitigation plan.

Jensen-Olson Arboretum— E. Carrillo: None.

Lands – C. Mertl: Amending Easement Code. Chicken Yard Park power easement passed.

Park Foundation— C. Mertl: None.

Treadwell Arena Board – K. Duncan: None.

Trail Mix— R. Crenshaw: None.

1% for Art— J. Anderson: None.

Other Member Business –

OHV Committee – met with members from the ORV, Jeep Club and other user groups and discussed how the clubs want to recreate.

Adjournment – 7:07 p.m. *Having no other business before the board.*

Respectfully submitted by Lauren Verrelli, Recreation & Public Services Manager, 2/27/2021

DRAFT



PARKS & RECREATION ADVISORY COMMITTEE

TUESDAY, JANUARY 5, 2021 – 5:30 PM

Zoom Webinar

I. Call to Order at 5:31 p.m. – C. Mertl, Chair

Present: Josh Anderson, Alex Beebe-Giudice, Edric Carrillo, Ron Crenshaw, Kirk Duncan, Chris Mertl, Will Muldoon, Emily Palmer, Tom Rutecki

Absent: None

Staff Present: George Schaaf, Director; Lauren Verrelli, Staff Liaison

II. Agenda Changes – C. Mertl adds presentation from Barbara Miranda on Mendenhall Glacier Master Plan under New Business.

III. Approval of Meeting Minutes –

A. From September 1, 2020 – E. Palmer moves to approve minutes; no objection. ***Minutes adopted.***

B. From November 3, 2020 – E. Palmer moves to approve minutes; no objection. ***Minutes adopted.***

IV. Public Participation on Non-Agenda Items – None

V. New Business –

A. Mendenhall Glacier Master Plan Update

Barb Miranda: I am the new Mendenhall Glacier Recreation Area Director and I am here to give an update on the Mendenhall Glacier Master Plan. Comments received in the last public comment period at the beginning of 2020 determined that an Environmental Impact Statement was needed and public comment is now back open until January 15. There will be an additional comment period over the summer and a final decision in the spring 2022. Current capacity is estimated at 635,500 people per year and as of 2017, visitation has been over 700,000 per year. A number of things are being proposed including expanding parking, a welcome center complex, updating the visitor center, additional trails and expanding current trails, new public use cabins, remote glacier visitor area, etc..

B. FY2022-27 Capital Improvement Program

K. Duncan: A memo is included in the packet that outlines what happened in our December 14 subcommittee meeting. CIP funds are an extremely important component of the Departments long term budgeting process. It is important that PRAC take an active stance to recommend to the Assembly that both the CIP projects and the bond the voters approved to get the funding.

J. Anderson: I move that the PRAC recommend that the Assembly fully fund the Parks & Recreations Departments FY22 CIP request.

Motion passes unanimously.

C. Prop 2 General Obligation Bond Projects

R. Crenshaw: I move the PRAC express its appreciation for the Assembly's support of Parks & Recreation projects totaling \$5.4 million, and recommends that the Assembly appropriate bond

funds for these projects, as presented at the December 9, 2020 meeting of the CBJ Assembly Finance Committee.

Motion passes unanimously.

VI. Unfinished Business –

A. Brigadoon Estates Land Disposal

G. Schaaf: We sent a mailer to everyone in the neighborhood, promoted it online and on social media and received 166 responses. The response we received was overwhelmingly to retain it as a park. Most individuals did not agree on providing the land at no cost. After we conducted the public outreach, the Law Department concluded that the property is a “public way” and it cannot be sold under the usual Title 53 process because it is not owned by the CBJ in its proprietary capacity. The Beans are not the “rightful owners” of the property and would not be eligible to receive the land if it was vacated.

VII. Information Items –

A. Amalga Cabin Update

G. Schaaf: With a little over 6 months of work, we have a completed cabin. The cabin will be available for reservations on January 11 at noon and the first night it will be available on Friday, January 15. The cost will be \$75/night with 3 nights maximum.

B. Capital School Park Improvements Project Update

G. Schaaf: Currently houses one of the oldest playgrounds we have in the system. It is one of the heaviest visited parks due to the proximity of day cares in the area. The retaining wall behind the playground is the biggest issue. With the passing of Prop. 2 we will have the funding to complete the playground. We completed a master plan in 2012 and looking to take it back to the community for input now. We have a public community meeting via Zoom on January 12. We plan to break ground this summer.

C. Operations Update

G. Schaaf: *Can be found in the [director's report](#).*

VIII. Committee, Liaison, and Board Member Reports

A. Chair Report— None

B. Liaison to the Assembly Report— Approved funding for EVC work; will promote our CIP projects; organizing training on Roberts Rules; Assembly has approved Fieldhouse to move back to CBJ ownership and for P&R to take over.

C. Liaison Reports—

Aquatics – W. Muldoon: Working on reviewing the Aquatics budget.

YAB – J. Anderson: Discussed proposed grants and changes.

Eaglecrest – E. Palmer: Eaglecrest is open.

Jensen-Olson Arboretum— E. Carrillo: None.

Lands – C. Mertl: Retooling Lands & Resources Committee to Housing Economic Development and Lands Committee. I may no longer be serving as the liaison.

Park Foundation— C. Mertl: Cabin is ready.

Treadwell Arena Board – K. Duncan: None.

Trail Mix— R. Crenshaw: None.

1% for Art— J. Anderson: None.

Other Member Business –

W. Muldoon: Sigoowu Ye Park in Lemon Creek is still having problems with drugs and crime and not being inviting place due to the need for lighting. The neighborhood group asked me to bring that up.

Adjournment – 6:49 p.m. *Having no other business before the board.*

Respectfully submitted by Lauren Verrelli, Recreation & Public Services Manager, 2/28/2021

DRAFT



PARKS & RECREATION ADVISORY COMMITTEE

TUESDAY, FEBRUARY 2, 2021 – 5:30 PM

Zoom Webinar

I. Call to Order at 5:31 p.m. – C. Mertl, Chair

Present: Alex Beebe-Giudice, Edric Carrillo, Ron Crenshaw, Kirk Duncan, Chris Mertl, Will Muldoon, Emily Palmer, Tom Rutecki

Absent: Josh Anderson

Staff Present: George Schaaf, Director; Lauren Verrelli, Staff Liaison

II. Agenda Changes – None

III. Approval of Meeting Minutes –

- A.** From October 12, 2020 – R. Crenshaw moves to approve minutes; no objection. ***Minutes adopted.***
- B.** From Subcommittee Meeting December 14, 2020 – A. Beebe-Giudice moves to approve subcommittee minutes; no objection. ***Minutes adopted.***

IV. Public Participation on Non-Agenda Items – None

V. New Business – None

VI. Unfinished Business – None

VII. Information Items –

A. Juneau Trails Master Plan Update

Allison Eddins: Wrapping up initial public outreach, two more focus groups meetings left. We have met with most user groups including dog walkers, ORV, commercial use permittees, neighborhood associations and more. Some major themes we have seen are safety (trailhead conditions), trail maintenance in winter, improving access and creating trail connectivity/loop trails and alternate transportation to get places in town. Lots of feedback on potential partnerships. We had a meeting last week and realized we wanted to reframe the plan to use as a tool for social inclusion. Creating an equitably and sustainability matrix that we would filter all our action items through to make sure we are achieving the goals of social inclusion, social equity as well as environmental sustainability. Lastly, we want to create an interactive web map on all trails in Juneau, which includes the basics, updates on current trail conditions and trail amenities. The next steps are to begin writing the Plan and will bring the draft document to PRAC in April and open up a 30-day public comment period.

Ryan O’Shaughnessy (Trail Mix): Since 1993, cooperative planning efforts between all agencies was born out of the first Trails Plan and it’s still going strong.

R. Crenshaw: Have you received input from individuals with disabilities using the trails?

A. Eddins: This is great and we have not yet had in-depth discussion regarding

accessibilities on trails for our residents who have physical disabilities. We realize this is something this Trails Plan needs to address.

W. Bryson: Have e-bikes been taken into consideration?

G. Schaaf: This question actually started coming up a few years ago and our code and regulations are not equipped to deal with them. We get advice from our Law Department and if the bike is capable of self-propulsion then it is treated as a motorized vehicle.

B. Juneau Park Foundation Update

Ian Fisk: I am the Chair of the Juneau Park Foundation (JPF) and our mission is to engage Juneauites in our parks and trails and advocate for the maintenance and improvements of our park system. Starting in 2019, we were able to fund the completion of the Auke Lake Wayside shelter. We also received a matching grant from the Rasmussen Foundation for the Amalga Cabin. In 2020, we helped with the Mill Campground to find funding for tent platforms. JPF also were advocates on the proposition to the bond package that the Assembly unanimously passed and approved by voters. Looking into the future, we want to work with the Department priorities they have identified through P&R Master Plan, as well as engaging more with neighborhoods. Another importance to JPF is looking at undeserved parts of the community. Parks and trails are essential to keep people here and attracting folks to Juneau.

C. Operations Update

G. Schaaf: Can be found in the [director's report](#).

VIII. Committee, Liaison, and Board Member Reports

A. Chair Report— None

B. Liaison to the Assembly Report— Slightly changing how the bond will be issued. Selling the \$15M that just was approved and we are including the sale of the \$7M bond from the previous year, which will reduce cost for the City.

C. Liaison Reports—

Aquatics – W. Muldoon: CIP money for deck resurfacing & LED upgrades. Communication is great.

YAB – J. Anderson: None.

Eaglecrest – E. Palmer: Very busy; ski lessons sold out.

Jensen-Olson Arboretum— E. Carrillo: None.

Lands – C. Mertl: Discussing affordable housing.

Park Foundation— C. Mertl: None.

Treadwell Arena Board – K. Duncan: Working on annual report.

Trail Mix— R. Crenshaw: Sat in on board retreat; have over 700 members.

1% for Art— J. Anderson: None.

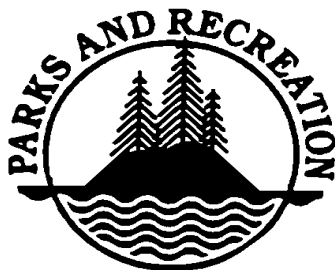
Other Member Business –

R. Crenshaw: The PRAC should have a workshop about the Fieldhouse and brainstorm on how to increase revenue.

Adjournment – 6:51 p.m. Having no other business before the board.

Respectfully submitted by Lauren Verrelli, Recreation & Public Services Manager, 2/28/2021

DRAFT PRAC Minutes 2.2.21



PARKS & RECREATION ADVISORY COMMITTEE

155 S. Seward Street
Juneau AK 99801
(907) 586-5226

To: Assembly Human Resources Committee

From: Christopher Mertl, Chair
Parks & Recreation Advisory Committee

Date: February 22, 2021

Subject: Parks & Recreation Advisory Committee 2020 Annual Report

The City & Borough of Juneau Parks & Recreation Advisory Committee (PRAC) meets the first Tuesday of each month at 5:30 P.M. The PRAC is comprised of nine members appointed by the Assembly for three-year terms. Like many other boards and commissions, PRAC was impacted by COVID-19 and only held eight public meetings in 2020. Six of these were remote virtual meetings.

While COVID-19 impacted our community and the Parks and Recreation Department (Department) at all levels, the passion and dedication of the Department staff was very apparent. While many had to perform their expected P&R roles and responsibilities, many were also assigned varying levels of additional commitment to deal with the pandemic. Despite taking on new responsibilities and being thrust into new situations not experienced before, the Department was able to safely provide the appropriate level of service and also find new ways to support the community and help reduce the associated stresses related to the pandemic. The Department, at all levels, deserves a huge amount of praise for their effort and willingness to go above and beyond to meet their mission.

In response to COVID-19, the Department has been very proactive in managing budgets and costs. These included reduced hours and elimination in staff. While parks, trails, and other outdoor facilities saw remarkable increases in demand since March 2020, the pandemic severely impacted the ability of the Department to deliver many programs and services to the public. As result of these management practices, the Department came in with a net savings of \$146,800 from the estimated FY21 budget.

Despite the challenges this year, the Department developed several new, low cost, and family oriented programs to safely get people to explore our parks, improve their mental and physical health, and promote economic opportunities. These included the Community Drive-Ins, Crack the Code, Auto Bingo, Pumpkin Carving, and Candy Cane Hunt, to name a few.

In 2020, PRAC said farewell to Jon Gellings and Kirsten Shelton. We thank them for their volunteer service and thoughtful input as they filled their term. PRAC welcomed Alex Beebe-Giudice and Ron Crenshaw as new members filling a three year term.

A new PRAC sub-committee, the Capital Improvements Program (CIP) sub-committee, was established in 2020 to effectively research and make recommendations to the larger PRAC. The CIP sub-committee worked with the Department, reviewed projects, costs and priorities, and made recommendations to the PRAC and Department to assist in the development of the Parks & Recreation Department Six-Year Capital Improvement Plan, including the Department's FY22 request.

While the PRAC received updates, took public comment, and provided input to the Department, several larger issues came before the PRAC this year. These included:

- Montana Creek Road: Motorized Restricted Winter Use Request
- Establishment of the Mill Campground (relocation of Thane campground)
- COVID-19 Impacts to Parks and Recreation Programs and Facilities
- COVID Conservation Corps (CCC) & Youth Employment in Parks (YEP) Expansion
- Amalga Meadows Public Use Cabin
- Infrastructure General Obligation Bond Package
- Juneau Trail Master Plan

Projects that warrant further discussion includes the Montana Creek Road, the CCC, and the Amalga Meadows Public Use Cabin. Several meetings were dedicated to the Nordic Ski Club's request to restrict motorized use of Montana Creek Road in the winter. These meetings included testimony from nearly 100 citizens from both sides, and over 500 written comments for PRAC to review and evaluate in making their recommendation to allow continued motorized use of Montana Creek Road during the winter months. We also had cause for several celebrations. The CCC program and their effort to deal with deferred maintenance issues and develop new facilities in our community was a huge success. We want to thank the CCC and all who made the program possible and hope this model is able to continue well into the future. And lastly, we would like to recognize our partnership with the Juneau Park Foundation who in partnership with the Department, the Rasmuson Foundation, volunteers, and others, were able to get a new public use recreation cabin built at Amalga Meadows. This wildly popular facility was sold out in minutes when the first three months of rental was made available to the public.

Additionally, the PRAC took public comment on a wide range of issues, providing support for several Parks & Recreation initiatives, and making recommendations to the Assembly. Planning and management highlights of 2020 include:

- Commercial Use Regulations
- ADOT Request for Property for Stephen Richards Roundabout
- Parks and Recreation Operations Update
- Hank Harmon Rifle Range Management
- Mountain Biking Opportunities Request
- Cope Park Pump Track
- Capital Improvement Program (CIP) Update
- Eagle's Edge Playground Donation to CBJ
- Downtown Summer Shelter (Mill Campground)
- Biathlon Course
- Dimond Park Field House Transfer
- Youth Activities Board
- Aquatic Center and Pool Renovations
- CivicRec Software
- Juneau Park Foundation
- Motorized Use and Development of a Dedicated Site
- Zach Gordon Youth Center
- Mount Jumbo Gymnasium
- Chicken Yard Utility Easement Request

I wanted to take a minute to recognize our Assembly liaison Wade Bryson. He has attended all but one PRAC meeting this year. His continued passion and support is greatly appreciated.

There are several others that we owe gratitude and deserve acknowledgment. Firstly, Merrill Jensen retired as manager of the Jensen Olson Arboretum after 13 years. Merrill has worked tirelessly and achieved Nationally Accredited Plant Collection status for the genus *Primula* (primrose), and reaching Level II Accreditation of ArbNet. Both accreditations recognize his efforts in achieving professional standards for the arboretum. If you have not been to the arboretum in the last few years, please go this spring and summer and see the many improvements at the hand of Merrill and his staff. Secondly, Treadwell Arena Manager Lauren Anderson was presented with the Bob Robertson Service Award by the Alaska Recreation & Parks Association for her dedicated service to the Association. And finally, we want to recognize our relationship with the Juneau Park Foundation. In addition to the Amalga Meadows Public Recreation Cabin, the Foundation spearheaded the public campaign 'Yes on Prop 2', in support of the \$15 million dollar Infrastructure General Obligation Bond Proposition that was passed by the community at 62%. The Foundation has also made several financial contributions and volunteer efforts for several parks throughout Juneau. We look forward to our long-term partnership with this new non-profit dedicated to parks in our community and look for similar support from the Assembly for the Park Foundation.

Again, I want to acknowledge and bring to light the exceptional service at all levels within the P&R Department; from the Director, his staff, the many volunteers, and all who have contributed to continuing the mission of the Department. This dedication once again proves why Juneau is the amazing community that it is. It shows our perseverance and caring for our neighbors in a time of crisis; with us all coming together. During the pandemic, the value of our recreation facilities and programs, parks, trails, and open space was front and center a critical component in the physical and mental health well-being of our citizens. I hope you continue to support these programs and facilities with the adequate funding, despite the challenging financial decisions that need to be made in 2021.

Thank you for this opportunity to serve our community. If you would like more information please call me at 907-988-9000.



Christopher Mertl
PRAC, Chair

Attachment: 2020 Attendance Record



TO: Parks and Recreation Advisory Committee
FROM: Michele Elfers, Parks & Recreation Deputy Director
DATE: February 25, 2021
RE: Glacier Valley Rotary Club Proposal for Riverside Rotary Park

For many years, the Glacier Valley Rotary Club of Juneau has been the community steward of Riverside Rotary Park. They have constructed the 9/11 memorial, a memorial bench, the small shelter, the duck pond viewing area and more recently installed the new playground equipment. They also perform regular maintenance work and funded the creation of the master plan for the park. Through a public input process, the master plan was developed to show planned improvements in the park over the next few years.

The Glacier Valley Rotary Club proposes to continue implementation of the master plan this summer. They would like to relocate the small shelter, construct the large shelter and complete the 9/11 Memorial. The small shelter functions for small picnics for families and park users while feeding ducks or playing at the playground. Discovery Southeast runs nature based activities in the shelter with their summer camps. The larger shelter will allow for gatherings larger than 8-10 people and create additional picnic areas for smaller groups using the park.

The Glacier Valley Rotary requests to partner with the Parks and Recreation Department on this work. Their project budget is \$88,000, this includes volunteer labor for construction by their members, and they are asking CBJ for \$35,000 in support of the work. The department has partnered successfully in the past on projects with community groups including Auke Lake Wayside, Cope Park Bike Pump Track, and the Amalga Cabin. The Rotary Clubs of Juneau with some funding support from the Park Foundation purchased and constructed an Icy Straits cedar shelter at Auke Lake Wayside. P&R is constructing a paved path and installing picnic tables as part of the project this spring. At Cope Park, the Juneau Mountain Bike Alliance constructed a bike pump track and P&R hired a contractor to do the rough excavation and shaping of the area. The Amalga cabin was purchased by the Park Foundation and P&R and the CCC program constructed the cabin.

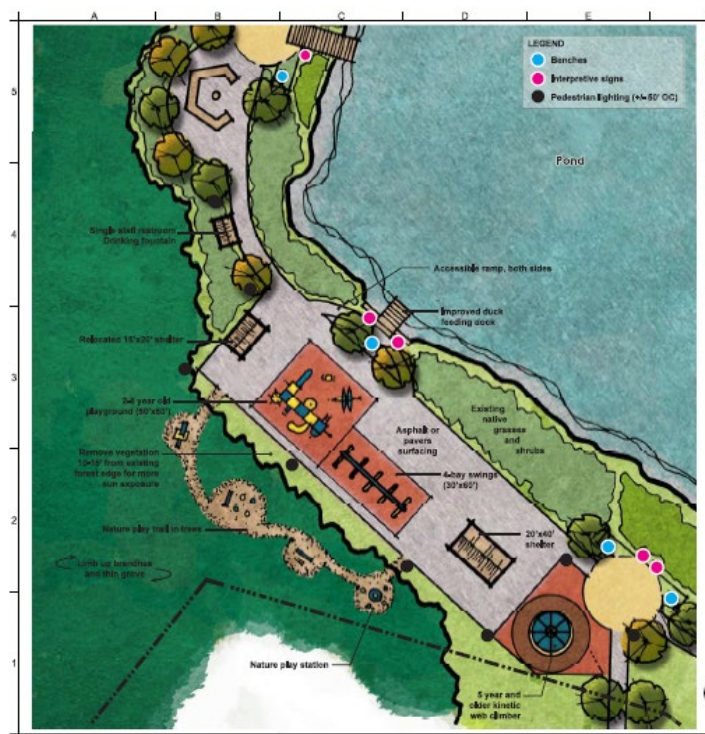
When developing the master plan and future implementation, it was envisioned that the Rotary Club and CBJ would partner on implementing the plan through construction projects. In the department's 6 year CIP, various improvements outlined in the master plan are programmed in future years for construction. Similar to the partner projects mentioned above, the Park and Playground CIP could provide funding to support this request as it is intended to provide maintenance and improvements to parks. As with

leveraging grant funding, leveraging partnerships with the community extends CBJ sales tax dollars for the benefit of the community.

Staff requests that the Parks and Recreation Advisory Committee provide a recommendation of support for this project for the department to partner with the Glacier Valley Rotary Club to improve the park shelters and 9/11 memorial and fund \$35,000 of the required work.

The Rotary Club would like to purchase an 20' x 40' Icy Strait Lumber kit that would look similar to this shelter in Sitka.





Riverside Rotary Park Shelter Proposal Submitted by Glacier Valley Rotary 02-24-21

Glacier Valley Rotary (GVR) members has been involved with Riverside Rotary Park (RRP) for over 40 years. Our long history includes the upkeep and continued improvement of RRP. Among other work, we installed a duck feeding station, installed the 911 Memorial, installed the original playground (and its replacement in 2018), installed the Bob Valiant Memorial bench, and annually do a clean-up and brush removal to keep the site lines open. We consider this our club's signature project, and are committed to continuing its maintenance and further improvements.

Four years ago, GVR paid for the creation of a Master Plan (Plan) for RRP. The Plan has three elements that we would like to complete during 2021. First, we plan to complete the 911 Memorial with a concrete wall behind and encompassing 3 sides of the memorial (this was part of the original design). Second, we will move the small shelter from its current location to one adjacent to the new playground. Third, we would like to purchase and install a 20' by 40' pre-fabricated Pavilion structure in the location called out in the master plan.

The Pavilion will be an excellent addition to RRP. It will provide a safe and centrally located gathering place for families across the Borough.

This Pavilion is what brings us to you. Our preliminary budget for this project is about \$88,000.00 (the Master Plan estimate for this shelter is \$142,000). Our preferred design is to build a post and beam pavilion out of Hemlock sourced from Hoonah, that is similar to the design of the new shelter at Auke Lake (that was a collaborative effort of the four Juneau Rotary Clubs). This proposed shelter will have a concrete floor, standing seam metal roofing with gutters and snow stops, and interior LED lighting. The shelter will be designed, engineered, and built to City codes.

GVR will seek partners for this shelter which exceeds GVR's resources. With the PRAC's approval, we would like to ask the City for \$35,000 to help offset our costs to build this shelter. While we understand the constraints of the CBJ Parks and Rec budget, we are hopeful that support of our project by the PRAC will help us to make a strong case for the project.

Riverside Rotary Park is a wonderful community asset that is well used and appreciated. This large shelter would expand its usefulness during our more inclement weather. We thank you for your consideration of this worthwhile Project!

Charlie Williams,
Glacier Valley Rotary