



Capital School Park Public Meeting

January 12, 2021
6pm



Land Acknowledgement

We respectfully acknowledge that Capital School Park is within and near the lands of the **Áak'w Kwáan** and the **T'aakú Kwáan**.

Agenda

Project Introduction 01

City and Borough of Juneau

Community Survey & Existing Conditions 02

MRV Architects

Park Design Discussion 03

Anderson Land Planning

Q/A 04





Meeting Objectives



Learn

Project timeline,
Budget & funding;
Survey results &
preliminary
design



Feedback

Parks are for all! Give us
feedback during this
meeting—participate in
the polls and use the
Q&A box to type in your
questions



Stay in touch

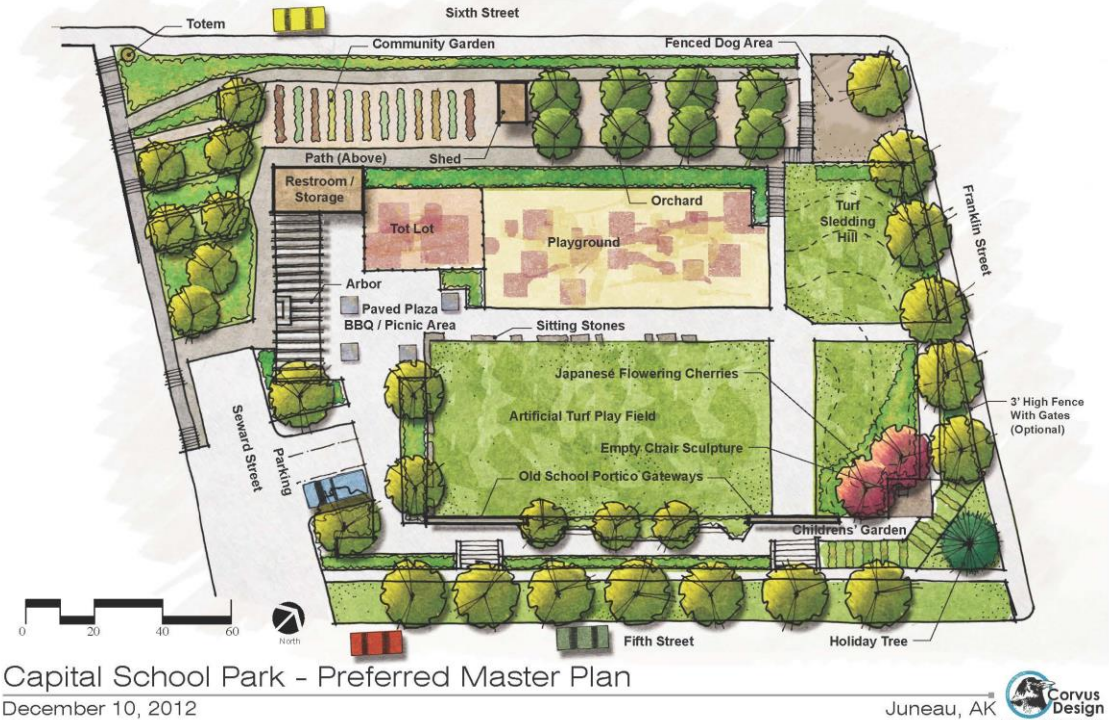
Project progress will
be on the CBJ P&R
project website:
[https://bit.ly/Capital
SchoolPark](https://bit.ly/CapitalSchoolPark)



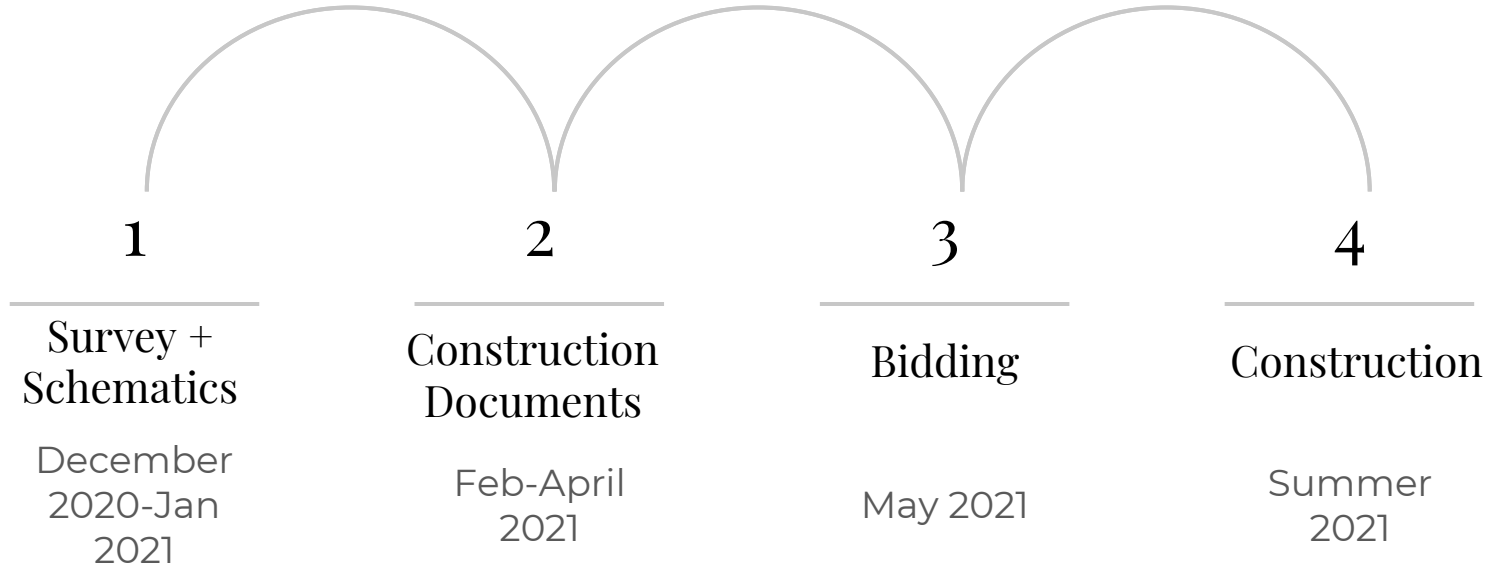
01 Project Introduction

About the Project

An existing master plan from 2012 is being updated and prepared for bid-ready construction documents for the reconstruction of Capital School Park.



Project Timeline & Funding





Capital School Park Reconstruction: Community Vision Assessment

Land Acknowledgement

We respectfully acknowledge that Capital School Park is within and near the lands of the Áak'w Kwáan and the T'aakú Kwáan.

Capital School Park Reconstruction: Community Vision Assessment

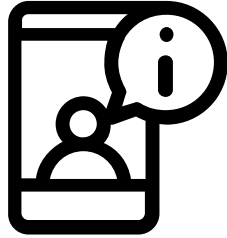
-PART 1: USER INFORMATION-

How frequently do you use Capital School Park?

- ☐ Multiple days in a week
- ☐ A few times a month
- ☐ Special Occasions
- ☐ Never

02

Community Survey & Existing Conditions



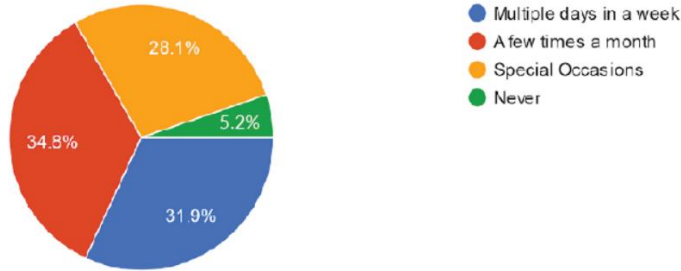
Feedback Time

Poll Question #1

Summary of Responses

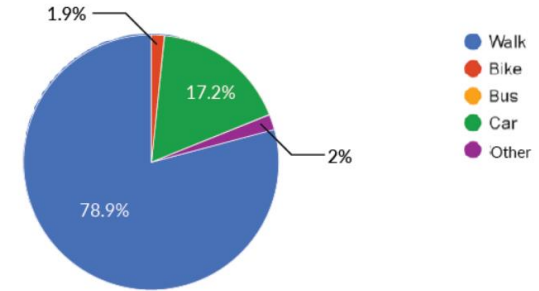
How frequently do you use Capital School Park?

210 responses



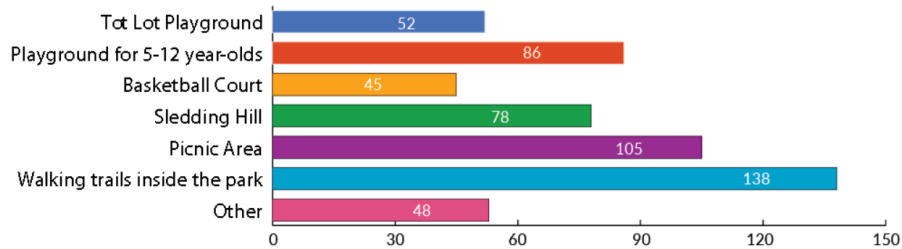
How do you access Capital School Park?

209 responses



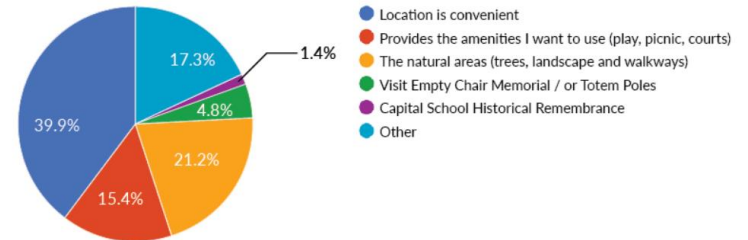
What type of amenities do you use when you visit Capital School Park? (Mark all that apply)

206 responses



Why do you visit Capital School Park?

208 responses



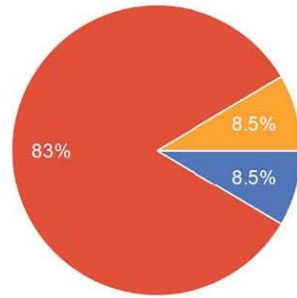
Summary of Responses



Summary of Responses

Did you participate in the master plan design process in 2012?

212 responses



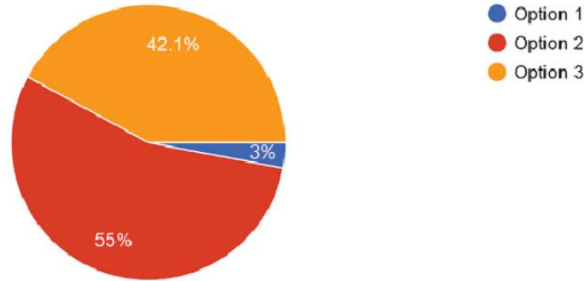
● Yes
● No
● I do not Remember



Summary of Responses

Which of the following do you like best? *Note these are just generic representations of playgrounds to get an understanding about the loo...quipment you want to see in Capital School Park.

202 responses



OPTION 1



OPTION 2

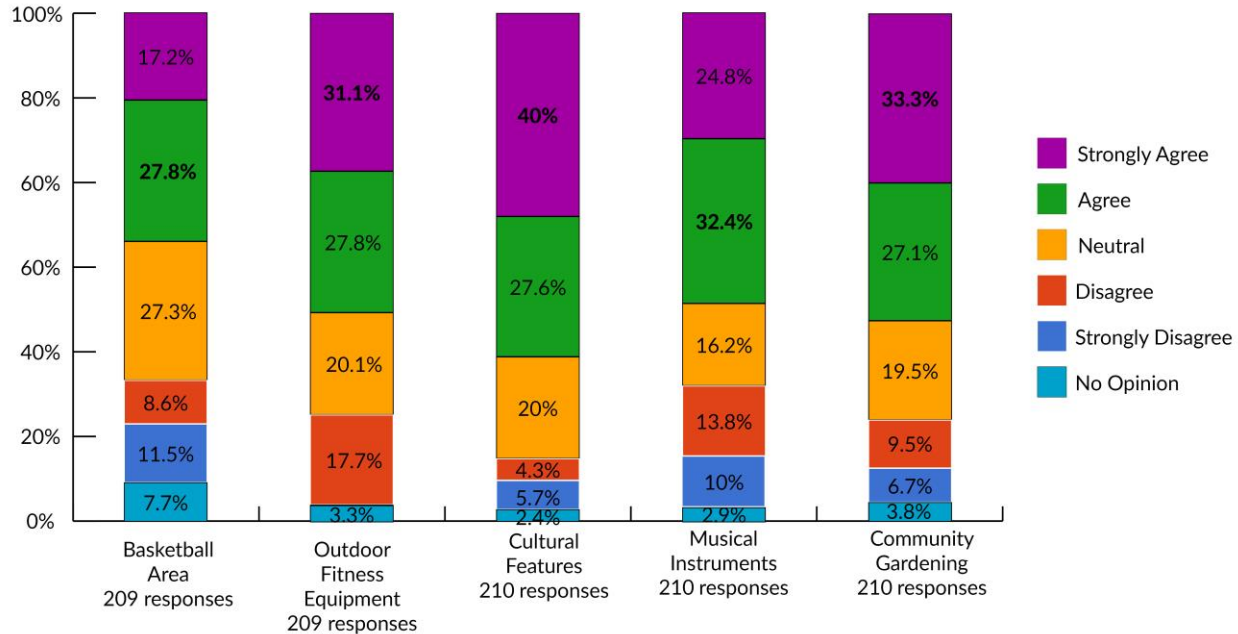


OPTION 3



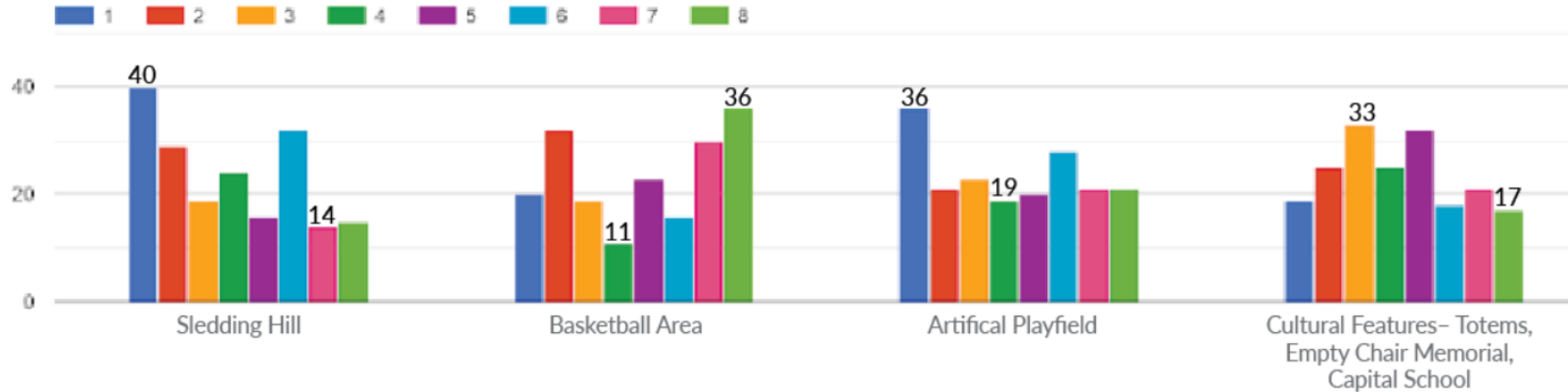
Summary of Responses

Rank your agreement with the following (Amenities) importance to include in the park:



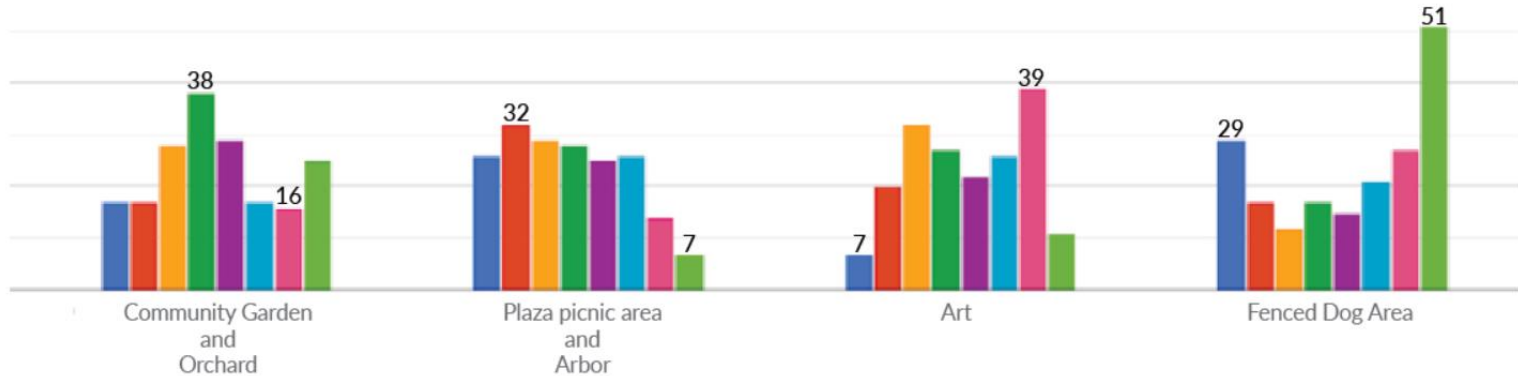
Summary of Responses

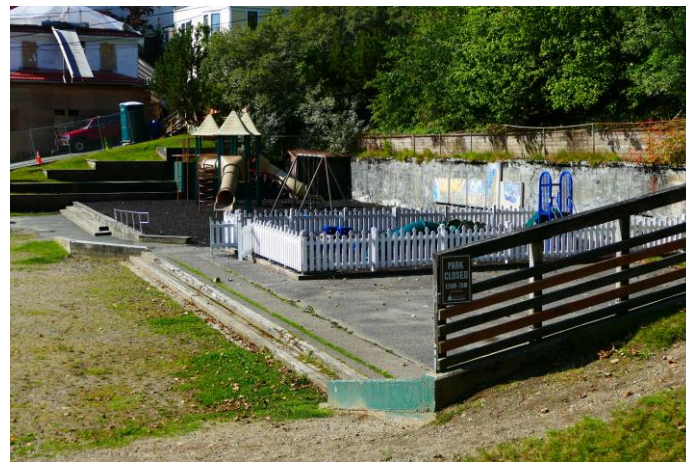
Please rank the following from MOST important (#1) to LEAST important (#8).



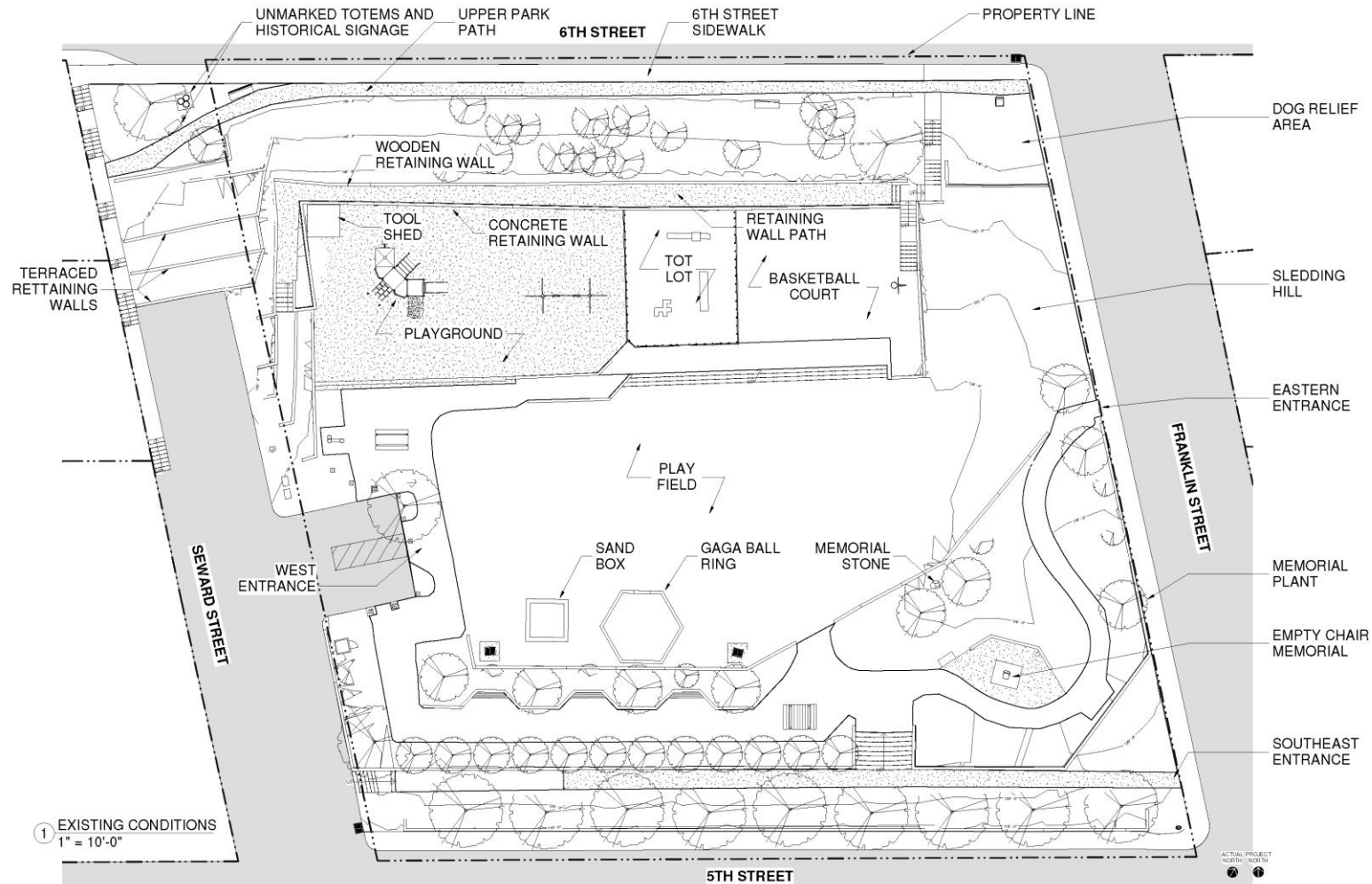
Summary of Responses

Please rank the following from MOST important (#1) to LEAST important (#8).





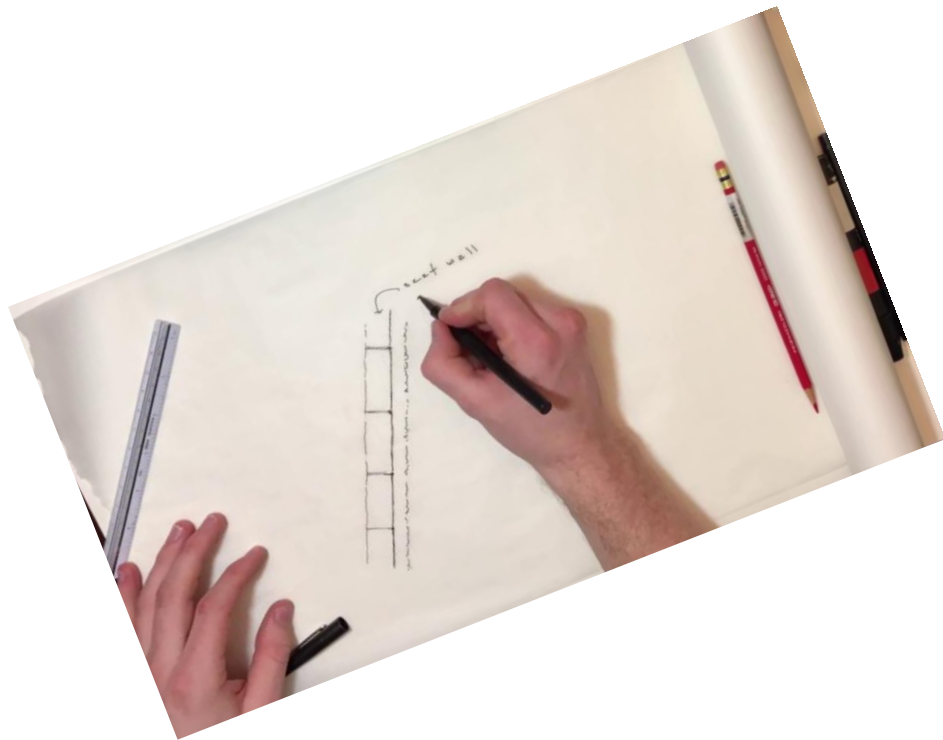
The 'Present'





The 'Past'





03 Park Design Discussion

If there is ONE thing you could change about the 2012 Master Plan...



Better playground equipment

Accessible & Inclusive,
rock climbing & swings



Seating/picnic spaces

More organic
shapes/relax places,
covered



Keep Basketball

Healthy for youth &
adults



Garden space

Better use of tiered
area in the SW
corner; orchard



No Artificial Turf

Keep it natural,
more grassy



Lots to say about dogs...

Both for and against



What YOU had to say about the future of the park...

space usually ends up looking weedy and unkept. This can be downtown Juneau's family park, accessible to all, green space, quiet space, kids space, meeting space, picnic space, sledding hill, and deluxe playground. Gardens need to be kid proofed, kids love climbing park trees. Would love to see trails on the beach with benches, low level lighting. Covered shelter turn into cleaning quarters at

Less is more. Please consider the peaceful and quiet qualities of the neighborhood rather than turning it into being all things to everyone. I like dogs, they have a quality and big area at Cope Park just over the hill. Bears will be attracted to an orchard/garden with compost. Please consider that. Make it more

park doesn't feel necessary because cope park fits that need. The playground and gathering space for neighborhood residents (like myself) feels most important. I love the chair project and feel proud of that

middle of the neighborhood. Making it a place that encourages respectful community based activities is very important.

offers little for everyone else. An ideal park would be fun and accessible for all ages and include activities and events for everyone.

Capital School Park

What's going to be in the Park?

Core Park Program



- Picnic and Seating areas



- Open Space Turf Area



- Fenced Tot Play space (Ages 2-5)



- Playground Structure (Ages 5-12)



- Swings (for all ages)



- Sledding Hill



- Paved Court Area



- Walking trails



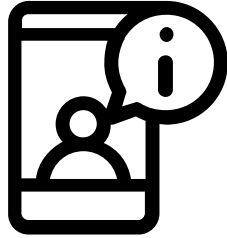
- Cultural Features (Totem and Empty Chair Memorial)

- Dog Area (retain what exists)

Optional Items as funding permits

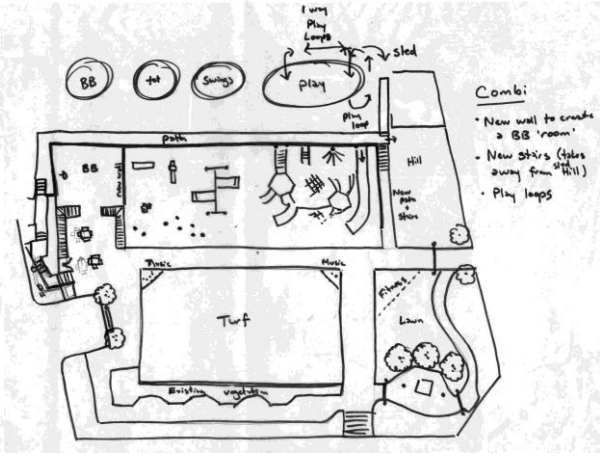
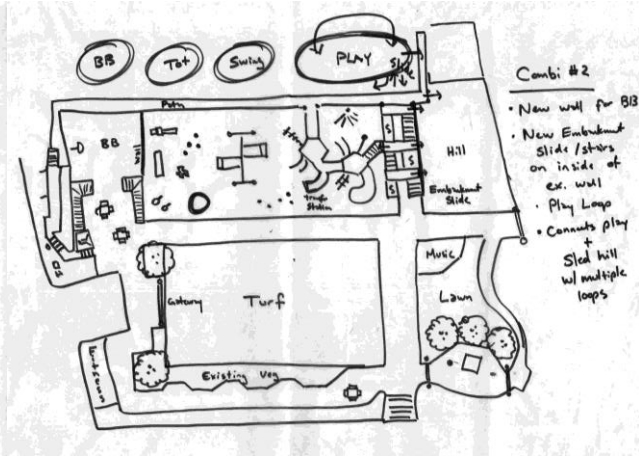
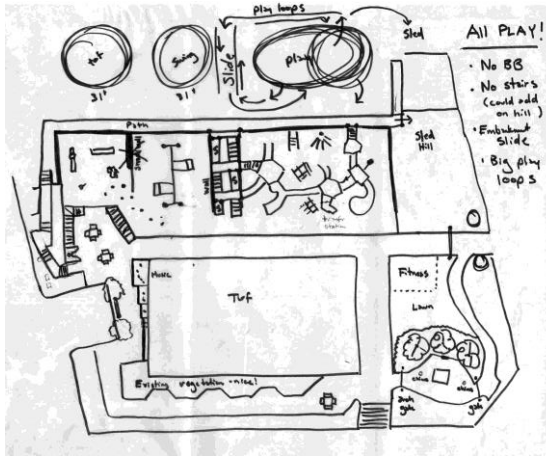
- Community Garden/Orchard Space
- Outdoor Classroom opportunities
- Fitness Equipment
- Outdoor Music
- Art
- Park Gateways & Signage



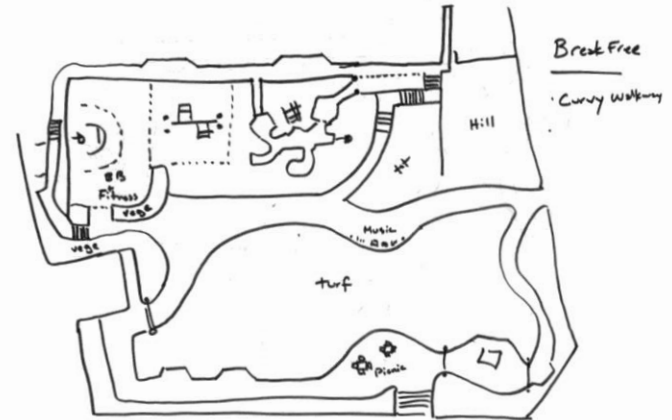


Feedback Time

Poll Question #2

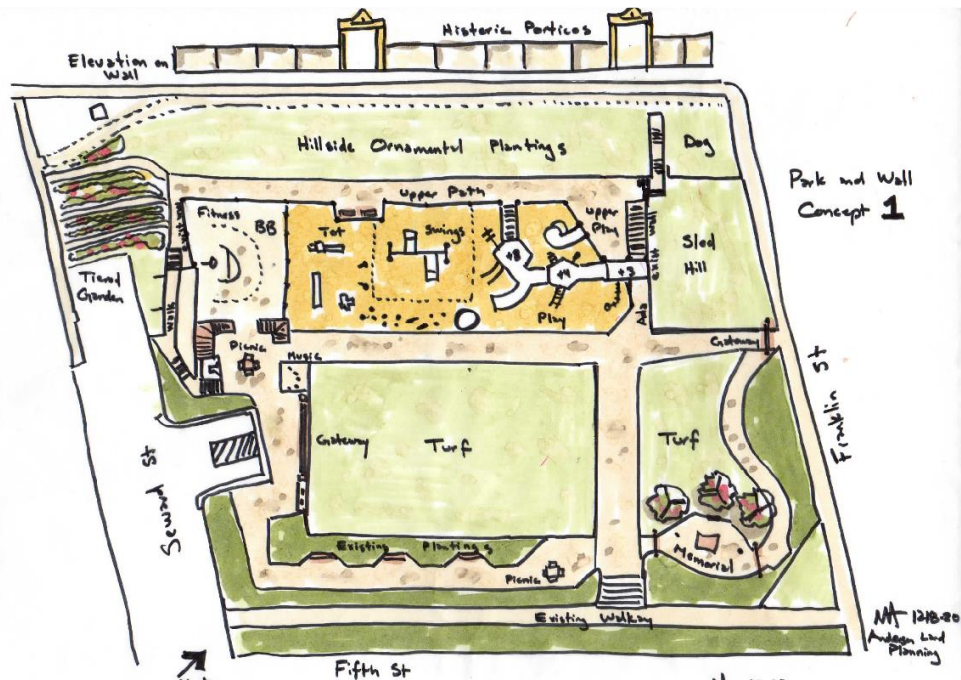


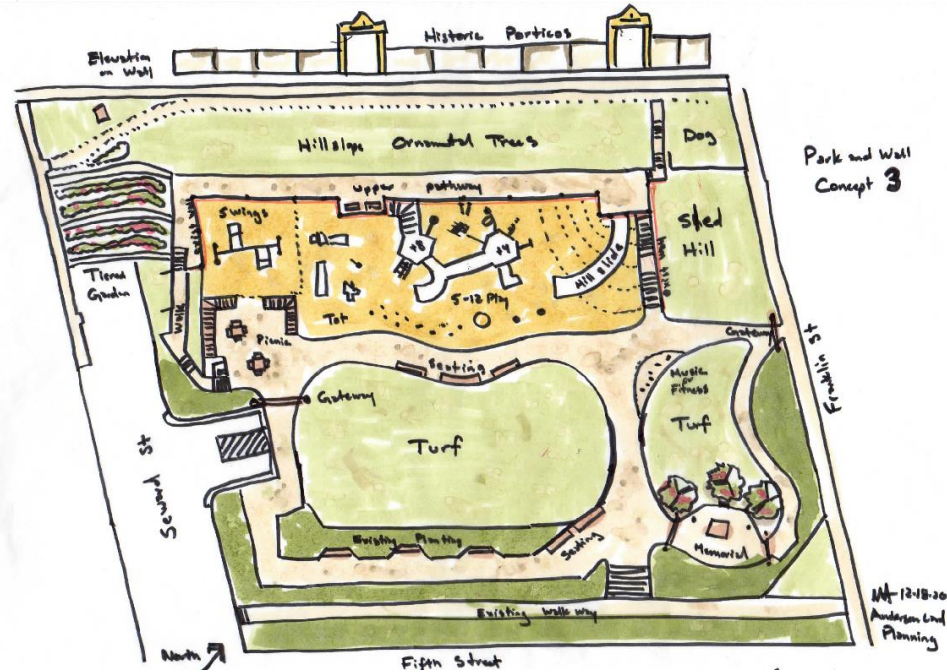
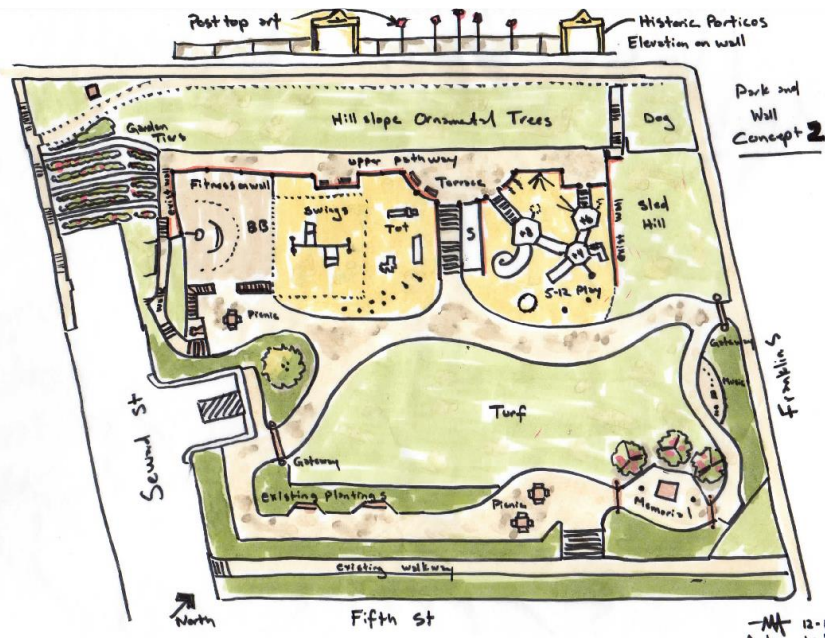
Thought Explorations





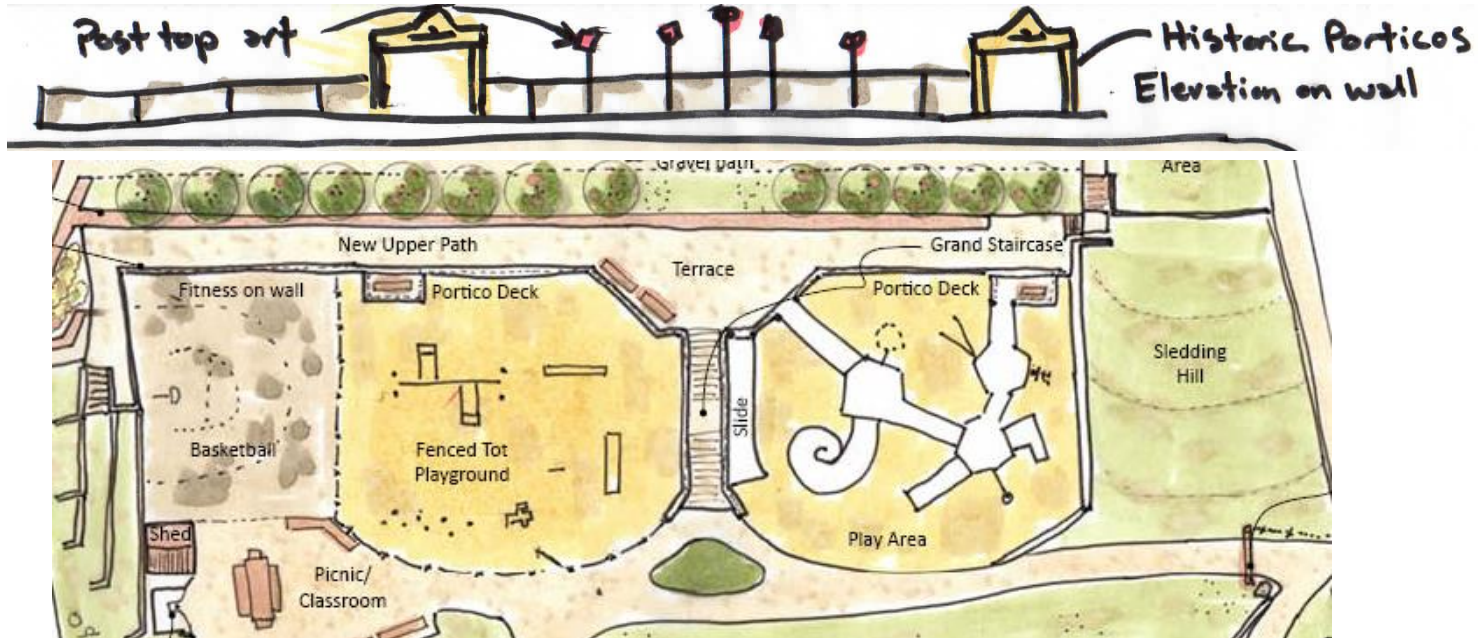
More Refined Site Diagramming





More Refined Site Diagramming

New Wall and Play Opportunities

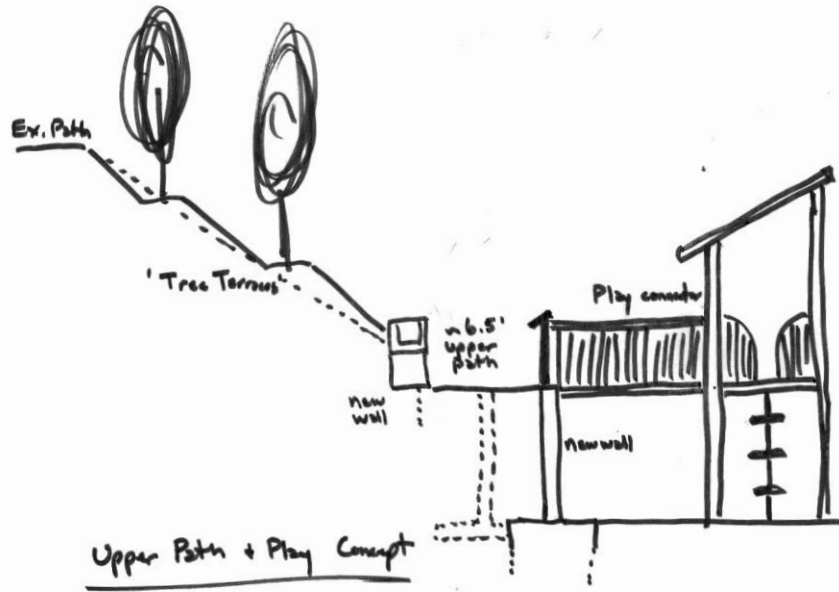


Center Staircase with an Upper Terrace

Takes advantage of the terrain
for both ground and upper
level play + VIEWS

4 Play 'Rooms'

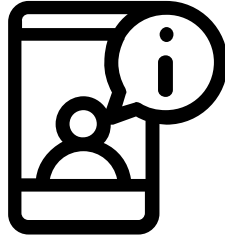
Court area, Fenced Tot Area,
Composite Play Structure and
Sledding Hill



Upper Wall & Play
connections

Portico gateway
– an echo
of the past

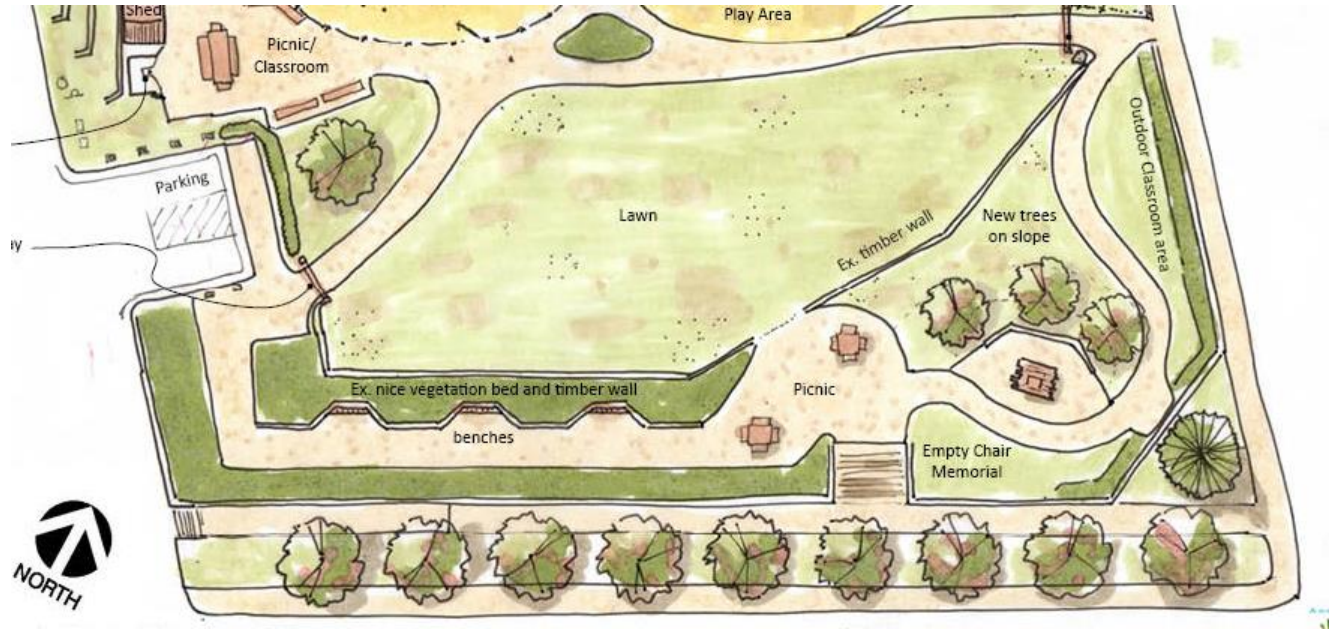




Feedback Time

Poll Question #3

Open Space and Seating

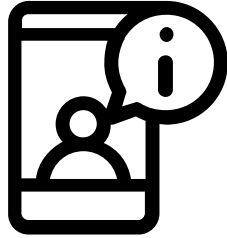


Turf & Walkways

Most flexible space for a whole range of programming; walking loop options;
Potential gated access

Picnic/Bench Areas

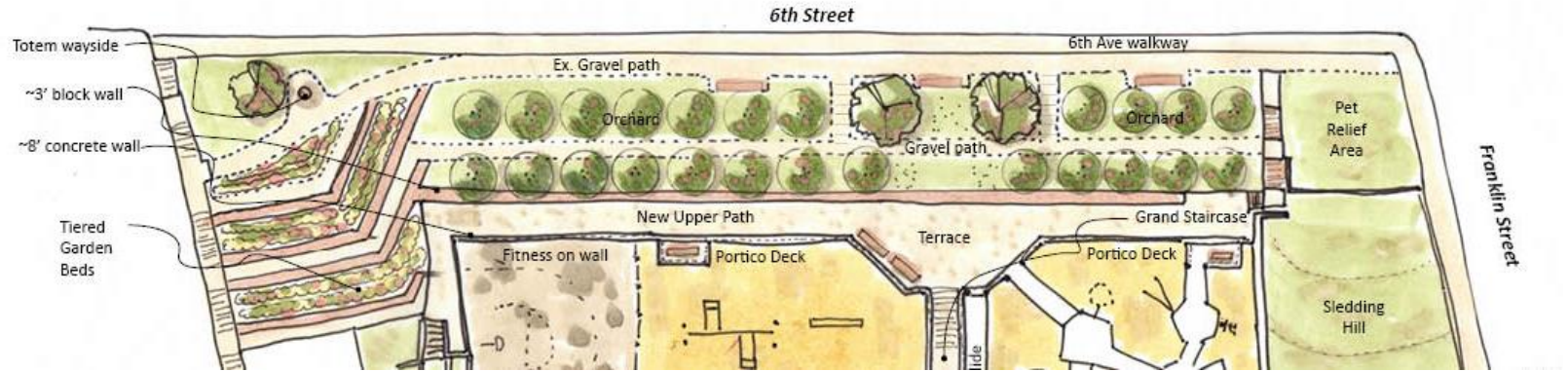
Multiple areas; Could have a cover over 1 or 2 tables



Feedback Time

Poll Question #4

Garden and Upper Hillside



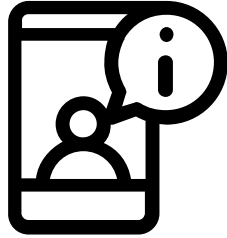
Community Garden

Utilize the existing Seward St hillside for community garden space; hillside tree terraces for orchard or flowering trees



Dog Area

Remains to serve as a neighborhood pet relief area (nearby Cope Park has a dog park)



Feedback Time

Poll Question #5

Cultural and Memorial Spaces



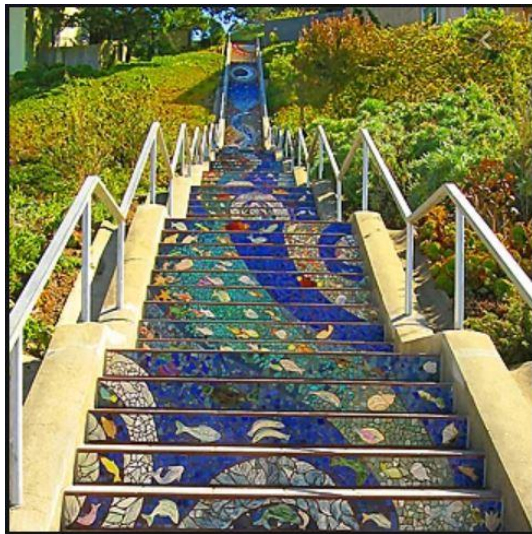
Empty Chair Memorial

Remains in place with
potential enhancements –
cultural gateway, music &
ornamental plantings



Totem

Add cultural interpretation and
wayside accent (formline
paving or other appropriate
material)



Art

- Here are some ways to integrate art on the project.



Tot area equipment ideas



Swings for all!



Reuse this equipment



Climbing traverse on
the new wall



Toddler rocker

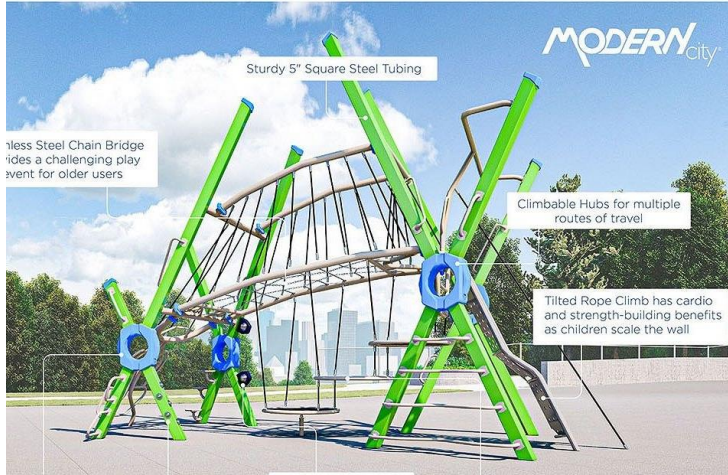


Balance stepping
'stones' to
link it all together



Tot's Gather Pod

Composite structure ideas



A



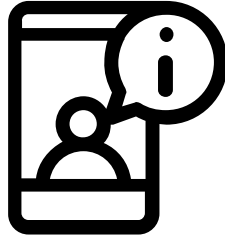
B



Metal Slide can be used in all options instead of plastic



C



Feedback Time

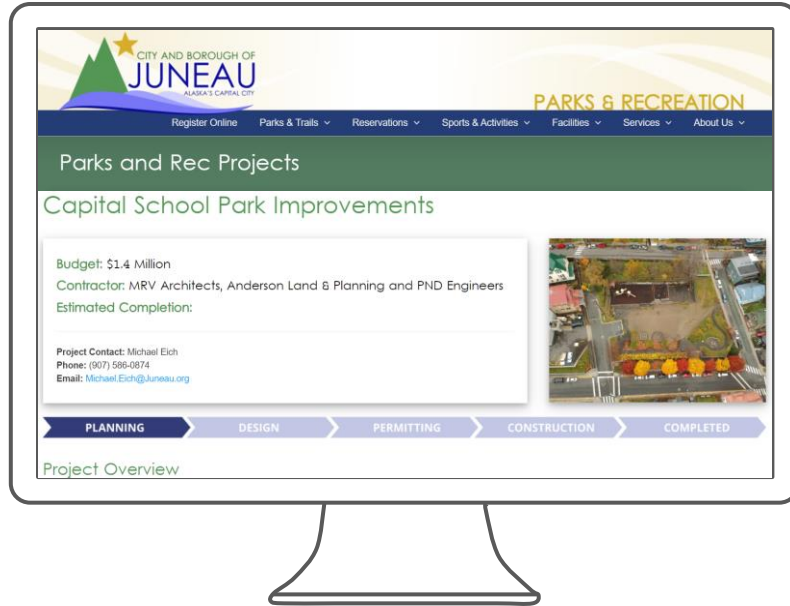
Poll Question #6



“ It is a happy talent to know how to play

Ralph Waldo Emerson

”



Project Website

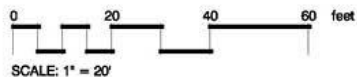
This presentation and full community survey results can be found on the project website:

<https://bit.ly/CapitalSchoolPark>

Go to the **zoom chat box** and add your email address if you would like to be on a mailing list for this project (your info will only be used by this project team).

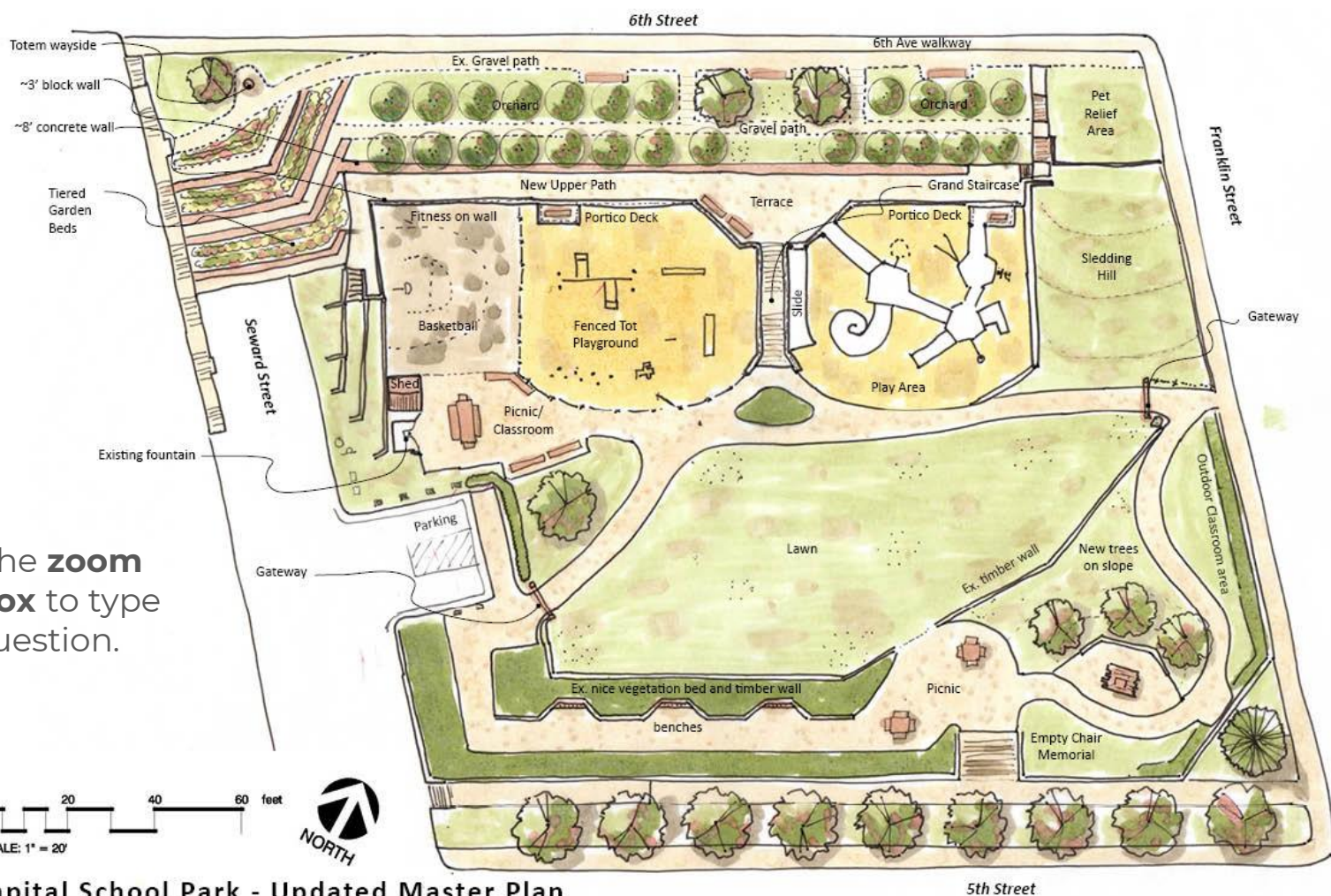
Q/A

Go to the **zoom Q&A box** to type your question.



Draft Capital School Park - Updated Master Plan

DATE: 01-03-21



Thanks!

Contact for questions:

Michael Eich

Project Manager

City and Borough of Juneau

W: 907.586.0874

C: 907.500.4401

Michael.eich@juneau.org



End!

CREDITS: This presentation template was created by Slidesgo,
including icons by Flaticon, and infographics & images by Freepik