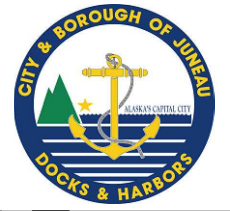
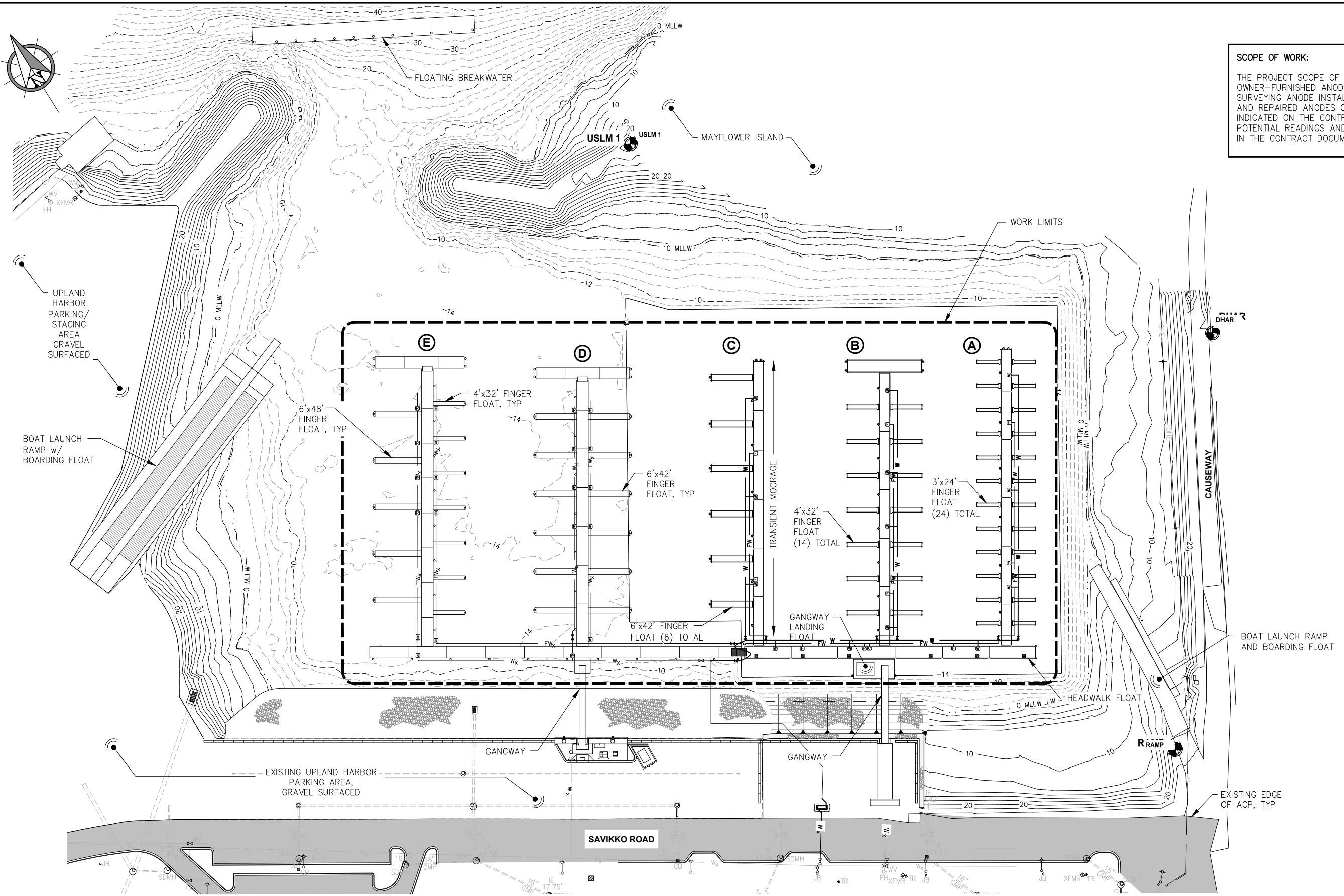




SCOPE OF WORK:

THE PROJECT SCOPE OF WORK INCLUDES: REPAIRING OWNER-FURNISHED ANODES, FURNISHING NEW ANODES, SURVEYING ANODE INSTALLATION ELEVATION, INSTALLING NEW AND REPAIRED ANODES ON STEEL PILES AT LOCATIONS INDICATED ON THE CONTRACT DRAWINGS, AND ANODE POTENTIAL READINGS AND CONTINUITY TESTING, AS INDICATED IN THE CONTRACT DOCUMENTS.



RECORD DRAWINGS

THESE DRAWINGS REFLECT RECORDED INFORMATION PROVIDED DURING CONSTRUCTION.

INFORMATION PROVIDED HEREIN IS ACCURATE TO THE BEST OF MY KNOWLEDGE.

DATE: AUGUST 2020

REVISIONS

REV.	DATE	DESCRIPTION	DWN.	CKD.	APP.
1	8/13/20	AS-BUILT	WRB	MS	MS

PND ENGINEERS, INC.

9360 Glacier Highway Ste 100
Juneau, Alaska 99801

Phone: 907-586-2093
Fax: 907-586-2099
www.pndengineers.com

DESIGN: MS CHECKED: JLD SCALE: SCALE IN FEET
DRAWN: PJD APPROVED: JLD 0 50 100 FT.



CITY & BOROUGH OF JUNEAU, ALASKA
DOUGLAS HARBOR ANODE INSTALLATION
CBJ PROJECT - DH20-032

SHEET TITLE: **GENERAL SITE PLAN**

PND PROJECT NO.: 192094 C.A.N. NO.: AECC250

2
SHEET
2 OF 5