



City and Borough of Juneau
City & Borough Manager's Office
155 South Seward Street
Juneau, Alaska 99801
Telephone: 586-5240 | Facsimile: 586-5385

DATE: September 26, 2020

TO: CBJ Assembly

FROM: Mila Cosgrove, Incident Commander

RE: **Situational Update –Level 3 High** - Operational Period 22 (9/17/2020 – 10/1/2020)

Overall Community Risk	Disease Situation	Hospital Capacity	Public Health Capacity
Level 3 High	Community spread based cases are occurring at an increasing rate.	Hospital capacity is good and the general situation at the hospital is stable.	The testing environment is stabilizing. Local investigations are being conducted in a timely manner.

The Complete CBJ COVID-19 Dashboard can be found [here](#) or by going to [Juneau.org/COVID-19](#)

Situation Assessment: We are experiencing a high volume of new cases, a significant number of which are attributed to community spread. Our 7 and 14 day case rate indicators are at the high alert level. The community is urged to take appropriate cautions and in particular to refrain from indoor, unmasked activities with individuals outside of family/social bubbles.

Issues of Note:

The special testing event at Housing First, AWARE and the Glory Hall tested 102 people in total.

Daily Numbers Report:

We are reporting no new cases today. DPH does not report numbers over the weekend and the State dashboard is still lagging the CBJ dashboard.

COVID-19 In Juneau				
	Active	Recovered	Deceased	Cumulative
Resident	30	258	1	289
Non Resident	0	98	0	98
Total	30	356	1	387

Note: CBJ EOC data may differ from the data reported on the State of Alaska dashboard due to lags in data entry on the state level.

Disease Transmission/Contact Tracing:

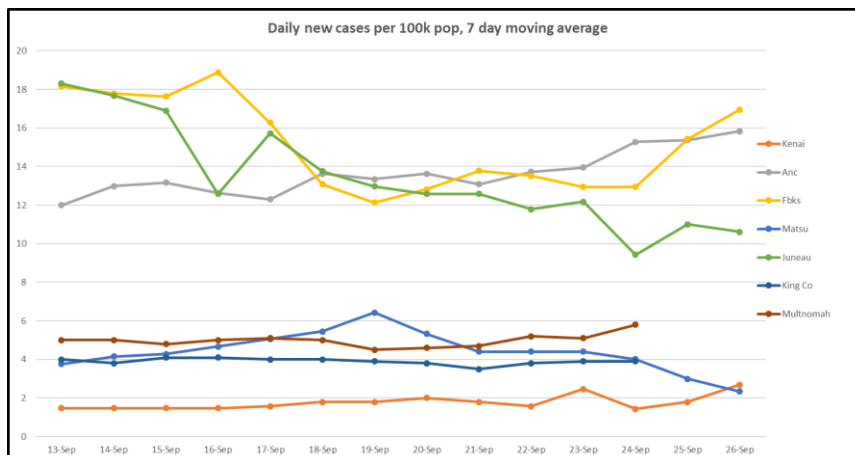
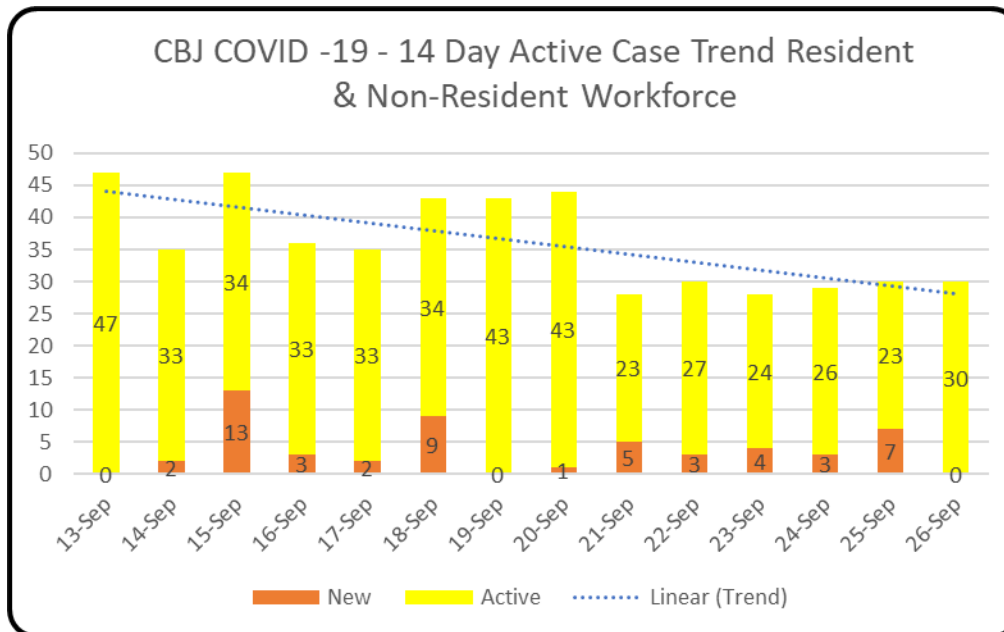
There are no new residents and no nonresident cases reported for Juneau today.

The state dashboard is showing a lower number of resident cases and nonresident cases than what is reported on the CBJ dashboard. In addition, our recovered numbers continue to be larger than what is being reported by the state. This is due to the timing of reporting. CBJ numbers are more accurate.

The State of Alaska is reporting 116 new cases today bringing the statewide cumulative case count to 8,315.

Testing:

Test data is unavailable until Monday.



This chart tracks the number of new cases in the past 7 days, controlled for population. King County (Seattle) and Multnomah County (Portland) are included for context and due to travel frequency. The source data for Alaska is from the SOA dashboard. Out of state data is from the Harvard Global Health Institute (<https://globalepidemics.org/key-metrics-for-covid-suppression/>) and generally lags a day behind most of our other reporting. Policy recommendations at varying levels (<1, <10, <25, 25+) can be found on their website