



City and Borough of Juneau
City & Borough Manager's Office
155 South Seward Street
Juneau, Alaska 99801
Telephone: 586-5240 | Facsimile: 586-5385

DATE: September 25, 2020

TO: CBJ Assembly

FROM: Mila Cosgrove, Incident Commander

RE: **Situational Update –Level 3 High** - Operational Period 22 (9/17/2020 – 10/1/2020)

Overall Community Risk	Disease Situation	Hospital Capacity	Public Health Capacity
Level 3 High	Community spread based cases are occurring at an increasing rate.	Hospital capacity is good and the general situation at the hospital is stable.	The testing environment is stabilizing. Local investigations are being conducted in a timely manner.

The Complete CBJ COVID-19 Dashboard can be found [here](#) or by going to [Juneau.org/COVID-19](#)

Situation Assessment: We are experiencing a high volume of new cases, a significant number of which are attributed to community spread. Our 7 and 14 day case rate indicators are at the high alert level. The community is urged to take appropriate cautions and in particular to refrain from indoor, unmasked activities with individuals outside of family/social bubbles.

Issues of Note:

Testing occurred today at Housing First, AWARE and the Glory Hall food distribution times. There are a number of people experiencing homelessness who are in quarantine due to close contact with a known positive. In addition, shelter staffing at the Armory has been constrained due to potential exposure however, staff should be cleared back to work in the next day or so.

The positive cases associated with the social gathering/bar cluster are slowing down. The total number of cases is up to 45.

CBJ EOC met with CHARR representatives today to get feedback on community mitigation measures. We will take their suggestions under advisement and loop back to the Assembly if adjustments are necessary.

Daily Numbers Report:

We are reporting 7 new cases today.

COVID-19 In Juneau				
	Active	Recovered	Deceased	Cumulative
Resident	30	258	1	289
Non Resident	0	98	0	98
Total	30	356	1	387

Note: CBJ EOC data may differ from the data reported on the State of Alaska dashboard due to lags in data entry on the state level.

Disease Transmission/Contact Tracing:

There are 7 new residents and no nonresident cases reported for Juneau today. 5 of the cases are secondary transmission and the other 2 cases are under investigation. Of the 3 cases yesterday, 2 were designated community spread, and 1 was secondary transmission.

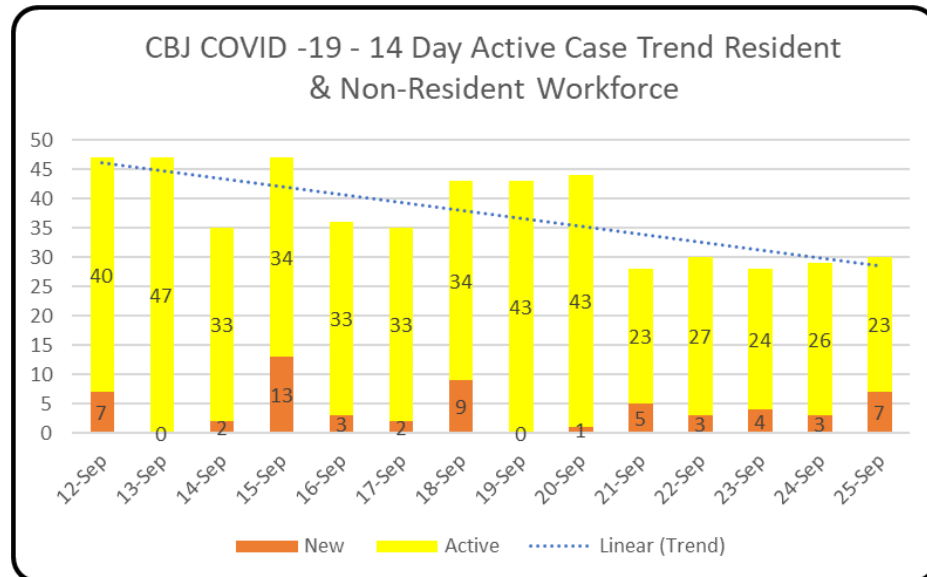
The state dashboard is showing a lower number of resident cases and nonresident cases than what is reported on the CBJ dashboard. In addition, our recovered numbers continue to be larger than what is being reported by the state. This is due to the timing of reporting. CBJ numbers are more accurate.

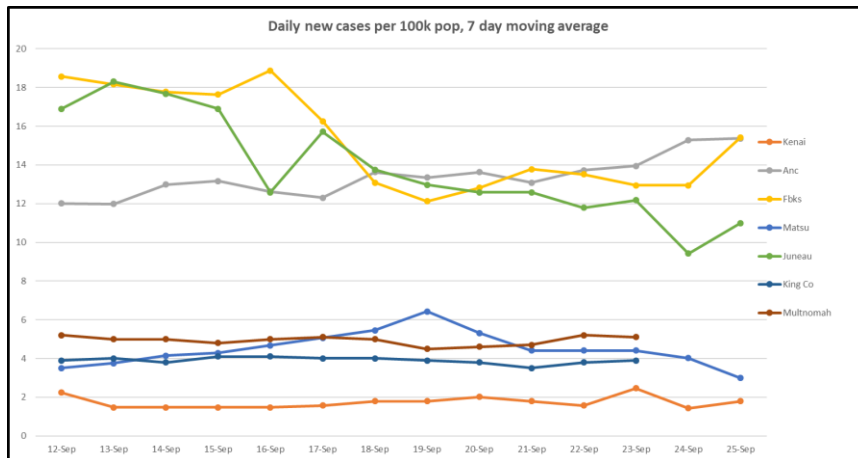
The State of Alaska is reporting 128 new cases today bringing the statewide cumulative case count to 8,202.

The state is also reporting six new deaths, bringing the total number of deaths to 51. One of the deaths was recent – a male Anchorage resident in his 60s. Five of the deaths were not recent and were coded as COVID-19 deaths by CDC's National Center for Health Statistics. Four of these five individuals died in Alaska: a male Anchorage resident in his 60s who died in July, a male Fairbanks resident in his 60s who died in August, a male Anchorage resident in his 50s who died in August, and a male resident of the Yukon-Koyukuk Census Area in his 70s who died in August. One died out-of-state; a male in his 70s who had listed Soldotna as his place of residence.

Testing:

170 test results were received with collection dates between 9/18/2020 – 9/21/2020. This represents a 2 – 5 day turnaround time. Tests returned evenly spread across the time frame.





This chart tracks the number of new cases in the past 7 days, controlled for population. King County (Seattle) and Multnomah County (Portland) are included for context and due to travel frequency. The source data for Alaska is from the SOA dashboard. Out of state data is from the Harvard Global Health Institute (<https://globalepidemics.org/key-metrics-for-covid-suppression/>) and generally lags a day behind most of our other reporting. Policy recommendations at varying levels (<1, <10, <25, 25+) can be found on their website