



City and Borough of Juneau
 City & Borough Manager's Office
 155 South Seward Street
 Juneau, Alaska 99801
 Telephone: 586-5240 | Facsimile: 586-5385

DATE: September 20, 2020
 TO: CBJ Assembly
 FROM: Mila Cosgrove, Incident Commander
 RE: **Situational Update –Level 3 High** - Operational Period 22 (9/17/2020 – 10/1/2020)

Overall Community Risk	Disease Situation	Hospital Capacity	Public Health Capacity
Level 3 High	Community spread based cases are occurring at an increasing rate.	Hospital capacity is good and the general situation at the hospital is stable.	The testing environment is stabilizing. Local investigations are being conducted in a timely manner.

The Complete CBJ COVID-19 Dashboard can be found [here](#) or by going to Juneau.org/COVID-19

Situation Assessment: We are experiencing a high volume of new cases, a significant number of which are attributed to community spread. Our 14 day and 7 day case rate indicators are at the high alert level. The community is urged to take appropriate cautions and in particular to refrain from indoor, unmasked activities with individuals outside of family/social bubbles

Issues of Note:
 None noted

Daily Numbers Report:
 We are reporting 1 new cases today. DPH doesn't report numbers on the weekend to the EOC, however, the state dashboard is showing a higher case count for residents so this report matches that number.

COVID-19 In Juneau				
	Active	Recovered	Deceased	Cumulative
Resident	44	222	1	267
Non Resident	0	98	0	98
Total	44	320	1	365

Note: CBJ EOC data may differ from the data reported on the State of Alaska dashboard due to lags in data entry on the state level.

Disease Transmission/Contact Tracing:

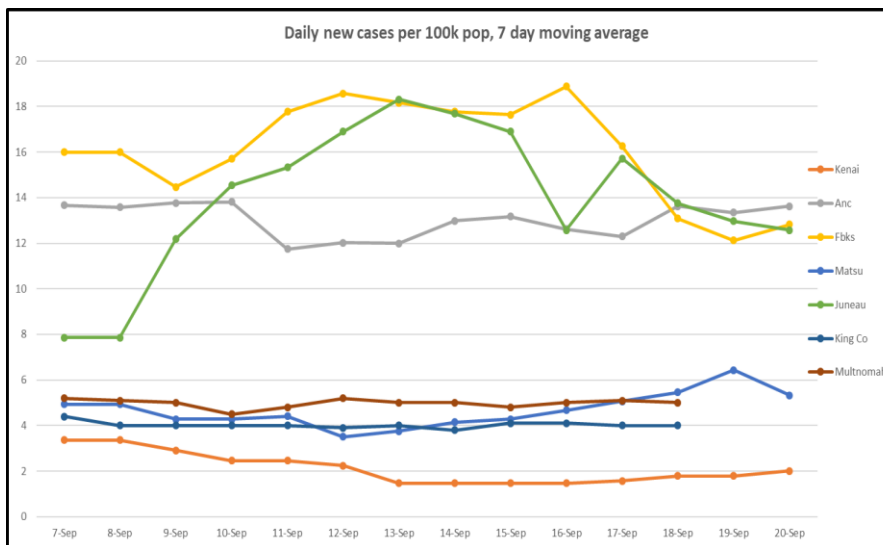
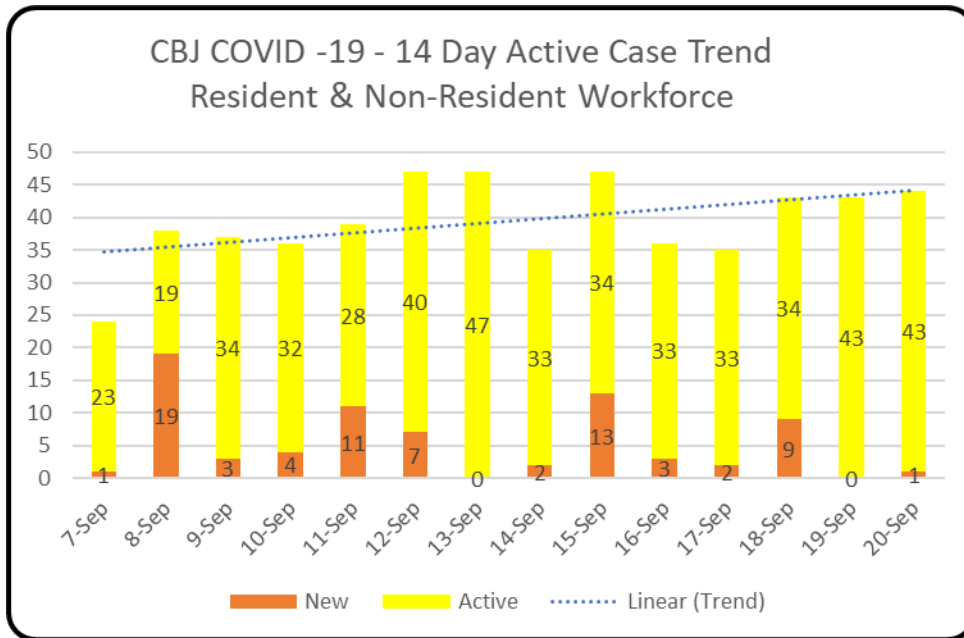
There is 1 new resident and no nonresident cases reported for Juneau today. We do not have detail about case acquisition on this case.

The state dashboard is showing lower numbers for nonresident cases than what is reported on the CBJ dashboard. In addition, our recovered numbers continue to be larger than what is being reported by the state. This is due to the timing of reporting. CBJ numbers are more accurate.

The State of Alaska is reporting 94 new cases today bringing the statewide cumulative case count to 7,767.

Testing:

There is no additional data on testing today.



This chart tracks the number of new cases in the past 7 days, controlled for population. King County (Seattle) and Multnomah County (Portland) are included for context and due to travel frequency. The source data for Alaska is from the SOA dashboard. Out of state data is from the Harvard Global Health Institute (<https://globalepidemics.org/key-metrics-for-covid-suppression/>) and generally lags a day behind most of our other reporting. Policy recommendations at varying levels (<1, <10, <25, 25+) can be found on their website