



City and Borough of Juneau
City & Borough Manager's Office
155 South Seward Street
Juneau, Alaska 99801
Telephone: 586-5240 | Facsimile: 586-5385

DATE: September 17, 2020

TO: CBJ Assembly

FROM: Mila Cosgrove, Incident Commander

RE: **Situational Update –Level 3 High** - Operational Period 22 (9/17/2020 – 10/1/2020)

Overall Community Risk	Disease Situation	Hospital Capacity	Public Health Capacity
Level 3 High	Community spread based cases are occurring at an increasing rate.	Hospital capacity is good and the general situation at the hospital is stable.	The testing environment is stabilizing. Local investigations are being conducted in a timely manner.

The Complete CBJ COVID-19 Dashboard can be found [here](#) or by going to [Juneau.org/COVID-19](#)

Situation Assessment: We are experiencing a high volume of new cases, a significant number of which are attributed to community spread. Our 14 day and 7 day case rate indicators are at the high alert level. The community is urged to take appropriate cautions and in particular to refrain from indoor, unmasked activities with individuals outside of family/social bubbles

Issues of Note:

Test results continue to come in at a steady rate. We are waiting on approximately another 250 to come in.

We continue to show positives from the social event/bar outbreak. There are 36 total positives associated with this cluster so far.

The individual we thought was potentially interacting may not have been. Out of an abundance of caution, CCFR will do a targeted testing at The Glory Hall tomorrow night at dinner.

Daily Numbers Report:

We are reporting 2 new cases today.

COVID-19 In Juneau				
	Active	Recovered	Deceased	Cumulative
Resident	35	221	1	257
Non Resident	0	98	0	98
Total	35	319	1	355

Note: CBJ EOC data may differ from the data reported on the State of Alaska dashboard due to lags in data entry on the state level.

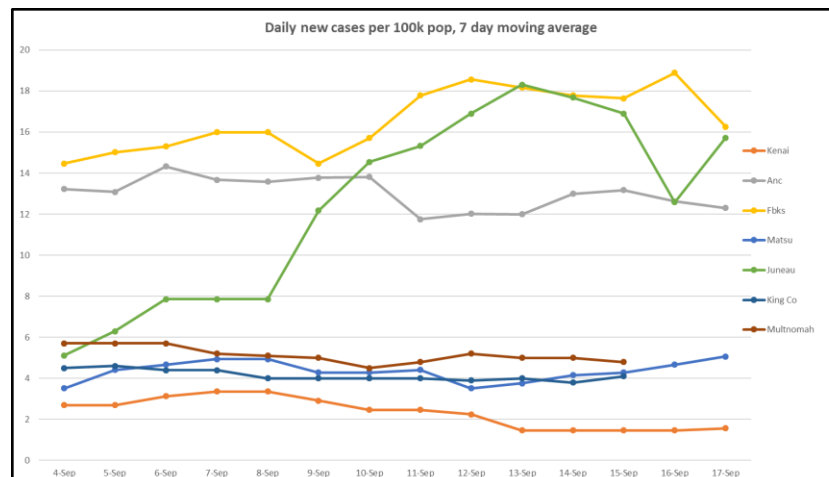
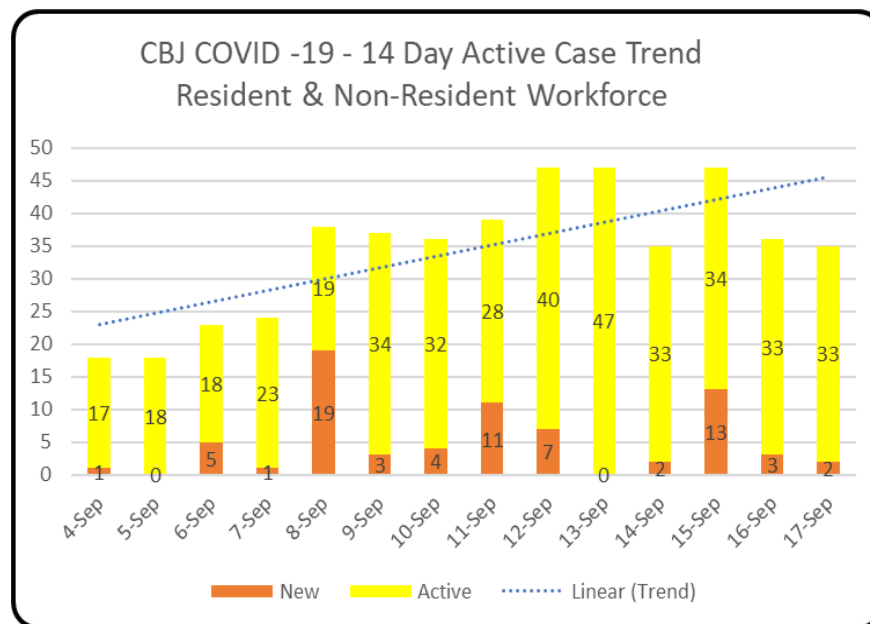
Disease Transmission/Contact Tracing:

There are 2 new resident and no nonresident cases reported for Juneau today. The large social gathering/bar cluster is up to 36 cases. The state dashboard is showing a higher number for resident cases and a lower number for nonresident cases than what is reported on the CBJ dashboard. In addition, our recovered numbers continue to be larger than what is being reported by the state. We will continue to monitor state cases to see why the positive number is off.

The State of Alaska is reporting 103 new cases today bringing the statewide cumulative case count to 7,471.

Testing:

60 test results were received ranging in collection dates 9/10/2020 – 9/13/2020. This represents tests returned in the 3 – 6 day range. The majority of tests returned at 5 days.



This chart tracks the number of new cases in the past 7 days, controlled for population. King County (Seattle) and Multnomah County (Portland) are included for context and due to travel frequency. The source data for Alaska is from the SOA dashboard. Out of state data is from the Harvard Global Health Institute (<https://globalepidemics.org/key-metrics-for-covid-suppression/>) and generally lags a day behind most of our other reporting. Policy recommendations at varying levels (<1, <10, <25, 25+) can be found on their website