

Presented by: The Manager
Introduced: 3-04-82
Drafted by: G.L.S.

RESOLUTION OF THE CITY AND BOROUGH OF JUNEAU, ALASKA

Serial No. 835

A RESOLUTION AUTHORIZING THE MANAGER TO SELL APPROXIMATELY 600 CORDS OF PRIMARILY "DOWNED" TIMBER ON 12.8 ACRES OF LAND AT .8 MILE FISH CREEK ROAD; SETTING A MINIMUM CASH BID PRICE OF \$4,200; AND AUTHORIZING THE MANAGER TO EXECUTE SUCH CONTRACTS AND AGREEMENTS AS NECESSARY.

WHEREAS, the City and Borough of Juneau has selected and received management authority from the State of Alaska of approximately 1,500 acres at .8 mile, Fish Creek Road, and

WHEREAS, enclosed within that selection lies approximately 12.8 acres of land upon which an estimated 600 cords of primarily "blow down" timber is located, and

WHEREAS, staff has recommended that sound timber and land use management warrants removal of timber from said land, and

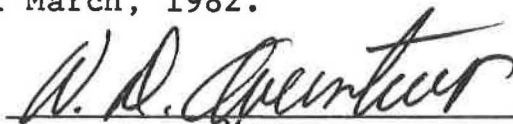
WHEREAS, staff has determined that the on-site fair market value of said timber is \$7 per cord, and

WHEREAS, the manager recommends a minimum cash bid price of \$4,200;

NOW, THEREFORE, BE IT RESOLVED BY THE ASSEMBLY OF THE CITY AND BOROUGH OF JUNEAU, ALASKA:

The manager is authorized to sell the standing and "down" timber on that 12.8 acres of land adjacent to the Fish Creek rock pit as shown on Attachment "A" hereto, for the cash bid of not less than \$4,200, and to negotiate the sale of such timber under such terms and conditions as the manager may deem appropriate if an acceptable minimum cash bid is not received.

ADOPTED this 4th day of March, 1982.



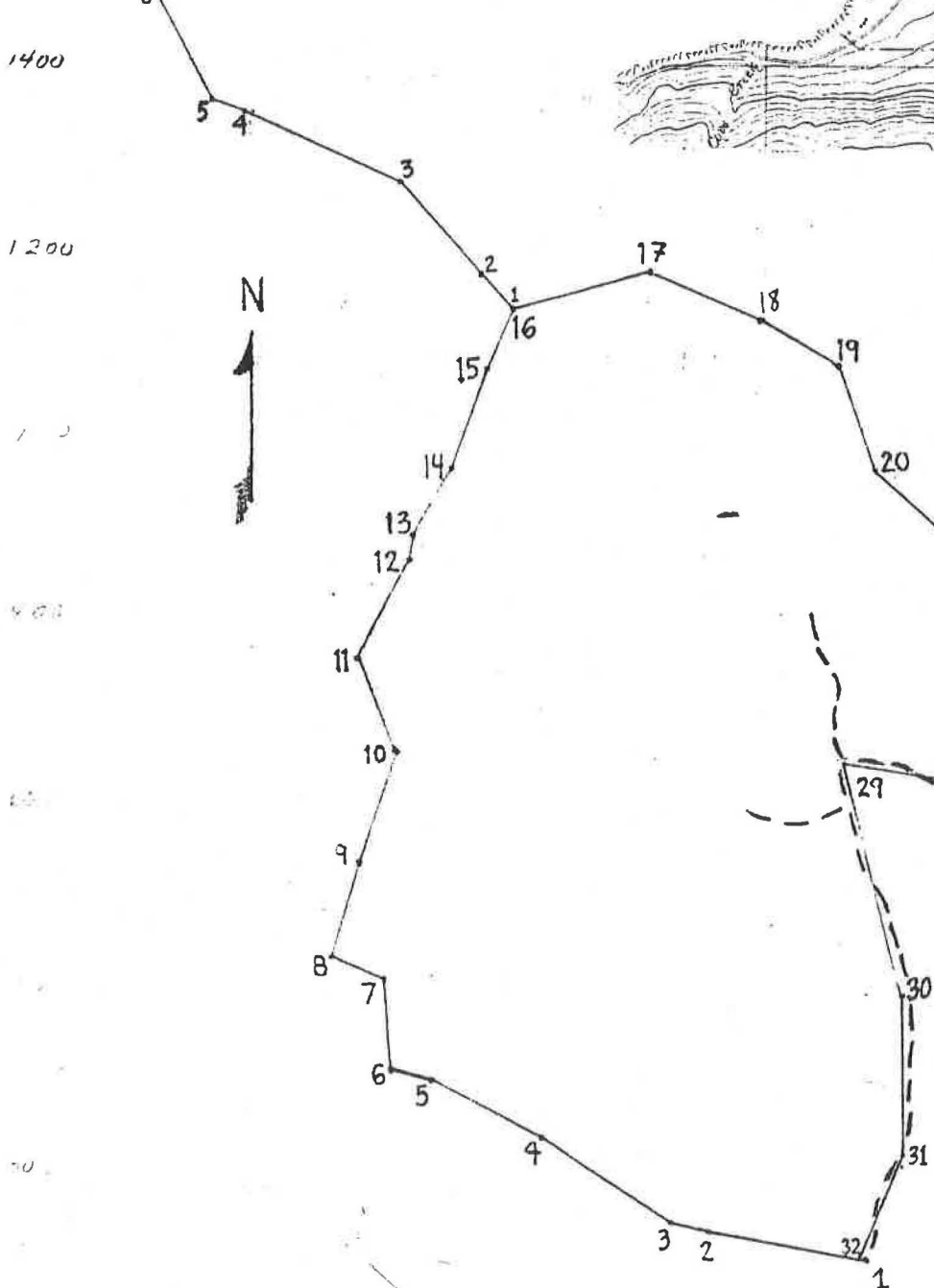
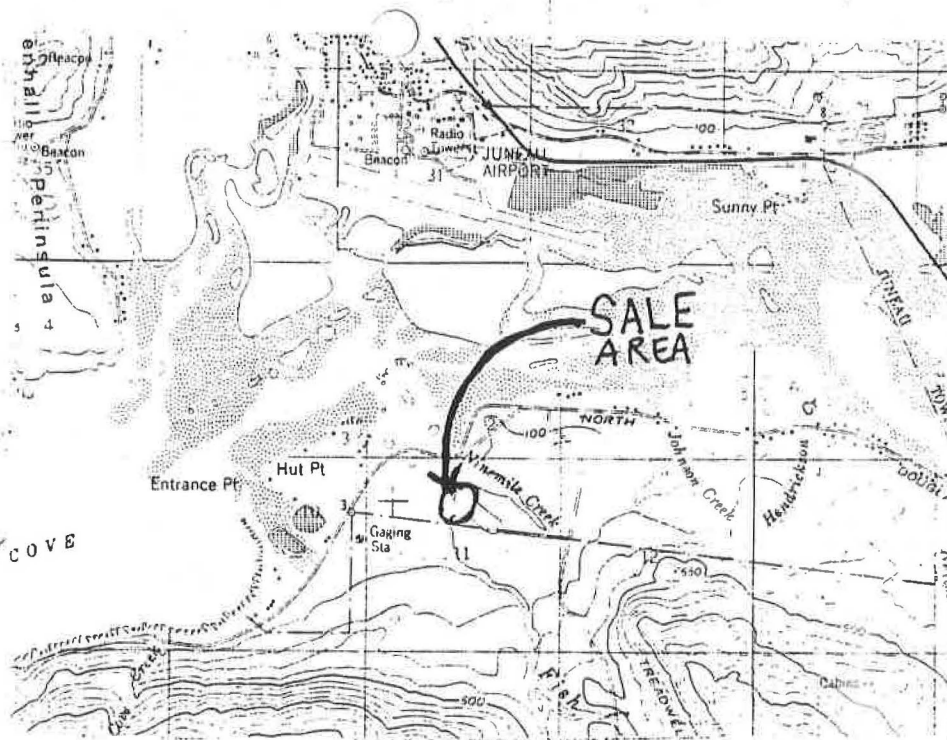
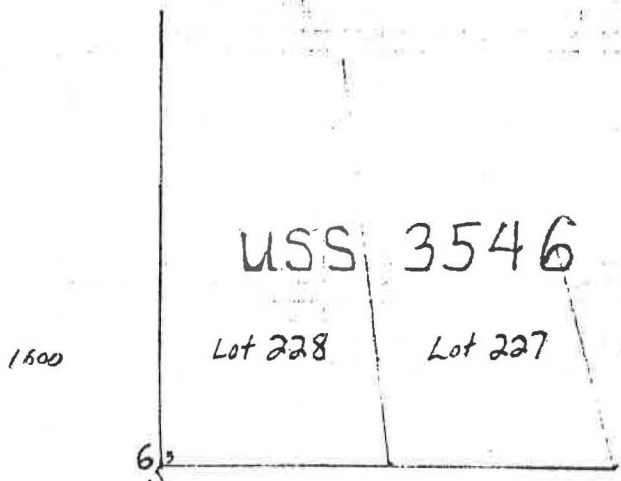
Mayor

Attest:



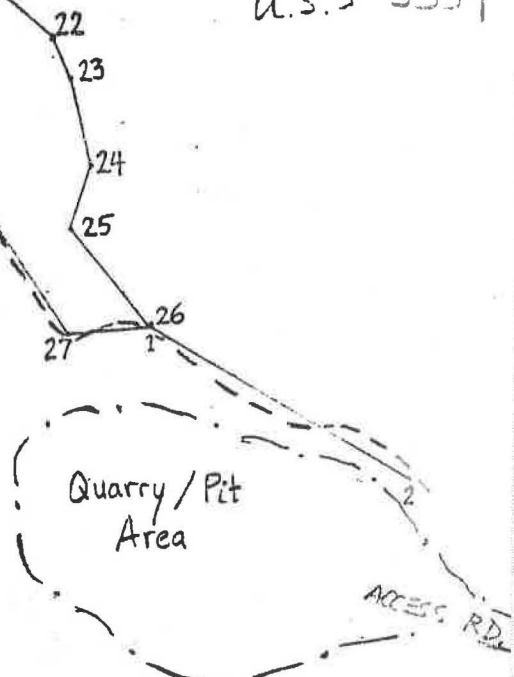
Clerk

ATTACHMENT "A"



Fish Creek Rock Pit
Timber Sale
Area Map

Lot 1
U.S.S 3559



SCALE 1" = 200'
--- Main Skid Trail (exist)
— Perimeter Boundary