

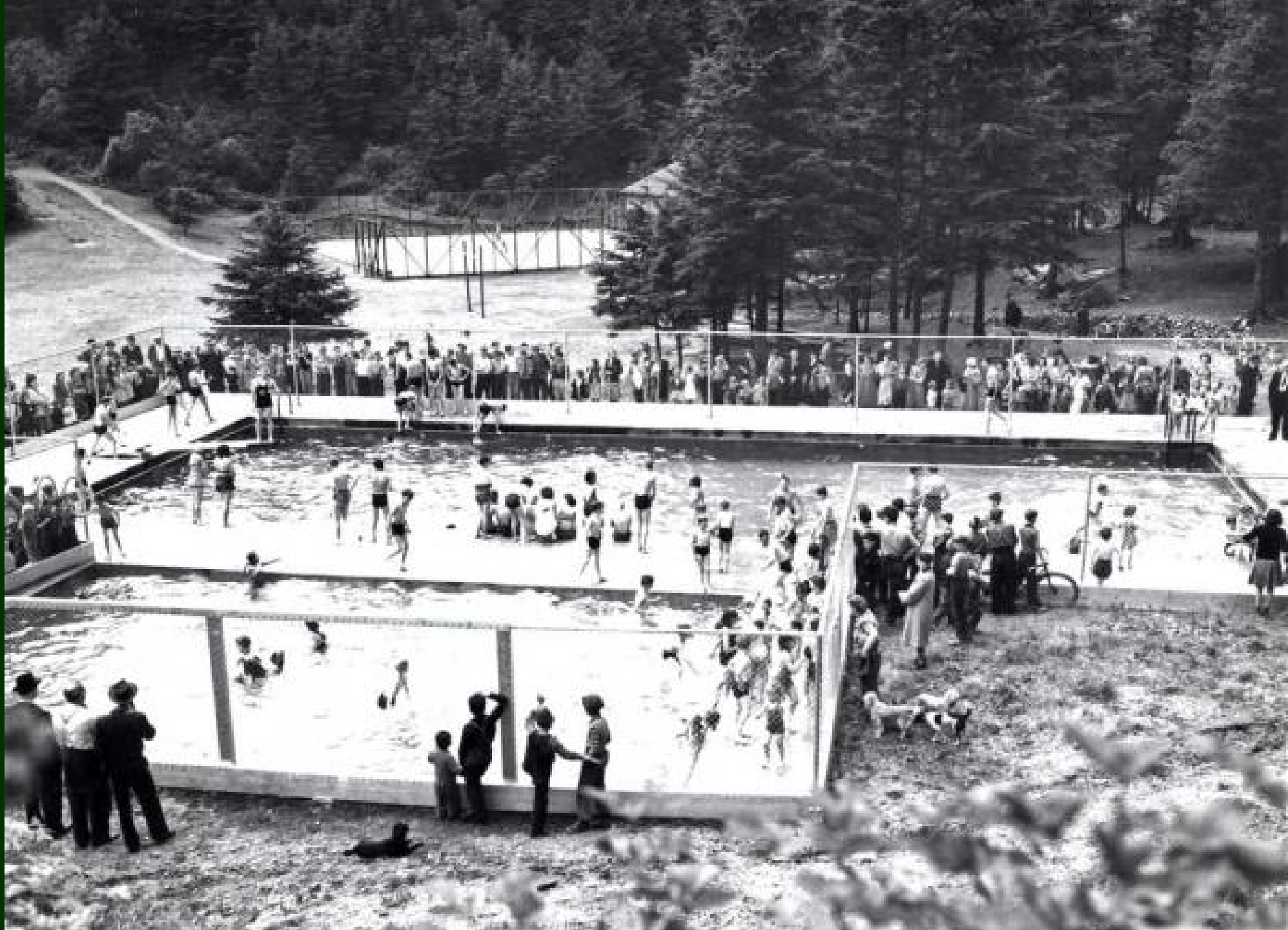
COPE PARK



**BIKE
SKILLS
PARK**



1945



2010



2020







Parks and Recreation Master Plan

Adopted 2019 by Assembly

**Guiding Principle:
Supporting Community
Partnerships**

**Critical Action:
Work with cycling
organization to develop a
bike skills park**



Bike Skills Park Features



Single Track –
Phase II

Strider
Track

Pump Track

Jumps



Pump Track



Photo by James Hall : www.leelikesbikes.com



Pump Track





Jumps



Jumps



Strider Track





Single
Track

JMBA will fundraise, hire a bike park designer and seek volunteers for construction.

For JMBA funding/volunteer questions email:
JMBA@juneaucyclingclubs.org

For Cope Park/CBJ questions email:
Michele.Elfers@juneau.org



