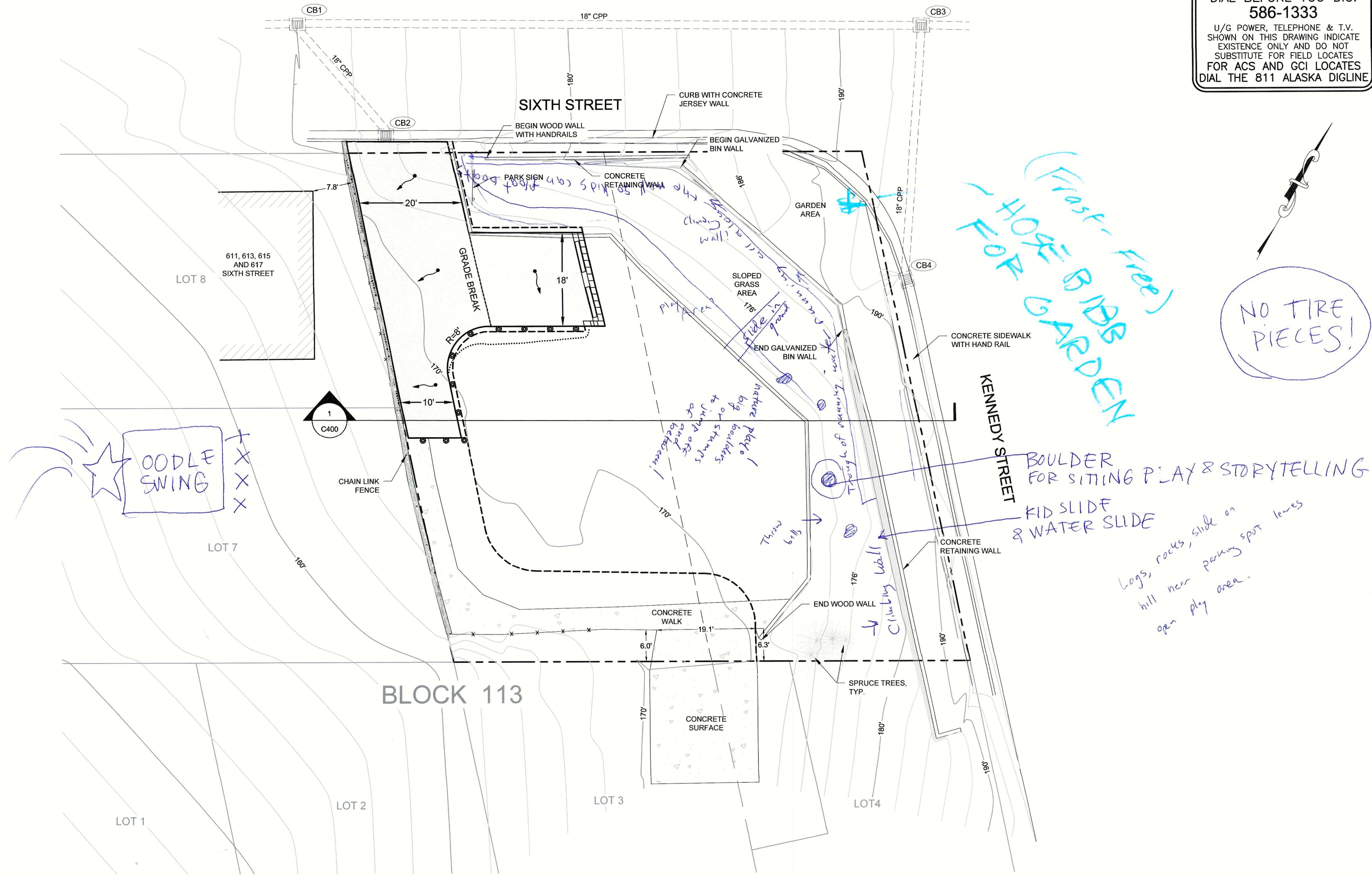


**DIAL BEFORE YOU DIG!**  
**586-1333**  
 U/G POWER, TELEPHONE & T.V. SHOWN ON THIS DRAWING INDICATE EXISTENCE ONLY AND DO NOT SUBSTITUTE FOR FIELD LOCATES FOR ACS AND GCI LOCATES DIAL THE 811 ALASKA DIGLINE



- Covered bench or picnic table.

HOPE GARDEN  
 (Fast-Food)

NO TIRE PIECES!

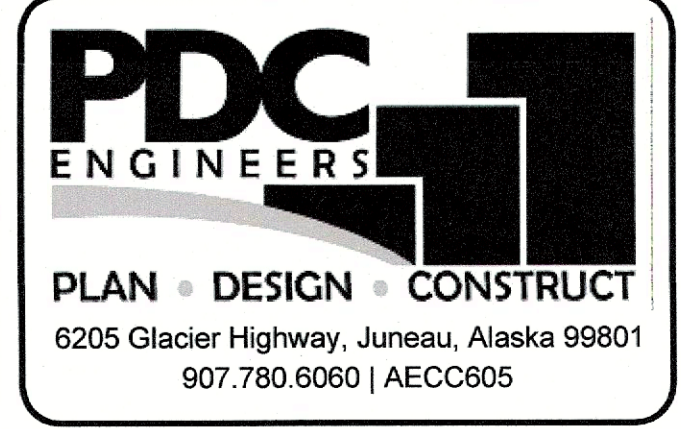
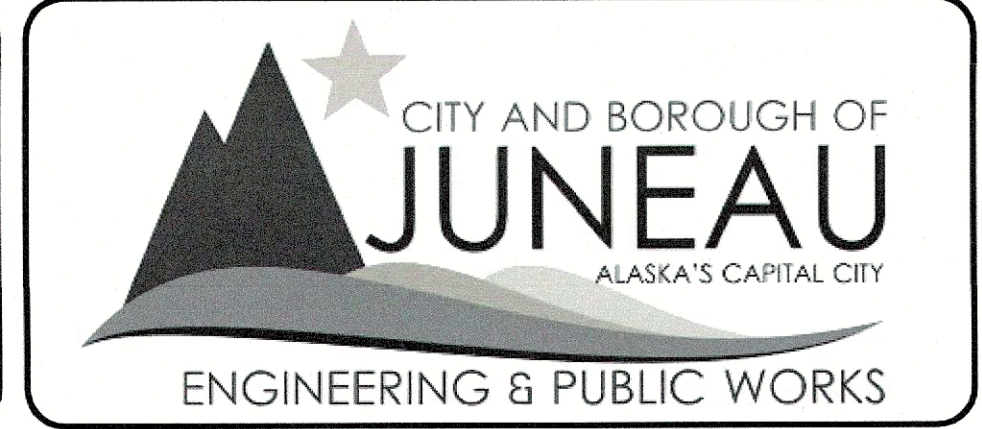
Boulder for sitting play & storytelling

Kid slide & water slide

Logs, rocks, slide on hill near parking spot leaves open play area.

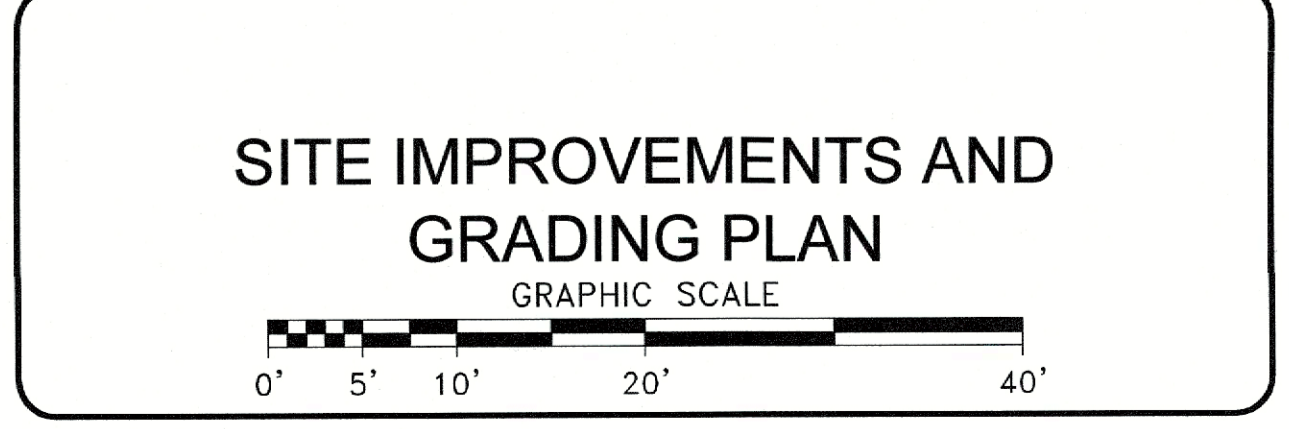
P:\2019\19290JN-CBJ\_Parks\_Impro\C\19290JN\_CYP\_wk.dwg PLOT: January 21, 2020 at: 2:34pm

DESIGN	ECR	
DRAWN	ECR	
CHECK	JMP	
APPROVED	JMP	
No.	DATE	REVISION



35%  
 SUBMITTAL

**CHICKEN YARD PARK AND  
 AUKE LAKE WAYSIDE  
 IMPROVEMENTS**  
 CBJ CONTRACT No. BE20-191  
 CITY & BOROUGH OF JUNEAU, ALASKA



DATE: JAN 10, 2020  
 PDC No. 19290JN  
 SHEET **C300a**

# How Can We Make Chicken Yard Park Better?

- Utilize slope for play "stuff" like slide + climbing wall or structure
- 10 + 7 yr olds say "stuff to climb on, a climber as opposed to climbing wall"
- FIRE PIT
- WATER FOR GARDEN
- TINY LIBRARY

- ▣ TOT FOCUS
- ▣ UNPROGRAMMED SPACE
- ▣ SWINGS - BUT NOT AT EXPENSE OF OPEN SPACE
- ▣ PLAYING BALL - NOT A STADIUM
- ▣ NOT AN IMMEDIATE DEMAND FOR GARDEN PLOTS
- ▣ ALLOW DOG USE
- ▣ FIX NUN SCULPTURE
- ▣ KEEP BASKETBALL
- ▣ MAKE USE OF LOWER SLOPED AREA AT GRADE SLIDE, CLIMBING, WATER PLAY
- ▣ OPEN SPACE FOR RUNNING AROUND
- ▣ NATURE PLAY AND COMPOSITE PLAY

- ▣ MAKE IT SOMETHING DIFFERENT
- ▣ MAKE SURE BALLS FOR BB DON'T GET AWAY
- ▣ CORNHOLE
- ▣ SWINGS + SLIDE
- ▣ MORE BENCHES FOR SEATING/GATHERING
- ▣ WILDLIFE CORRIDOR
- ▣ FLEXIBLE GATHERING/NEIGHBORHOOD EVENTS
- ▣ MOVE PARKING STOPS CLOSER TO LOT
- ▣ CONFLICT BETWEEN PARK ACTIVITIES AND PARKED CARS (DAMAGE)