



# CHICKEN YARD PARK

COMMUNITY MEETING  
1/22/2020



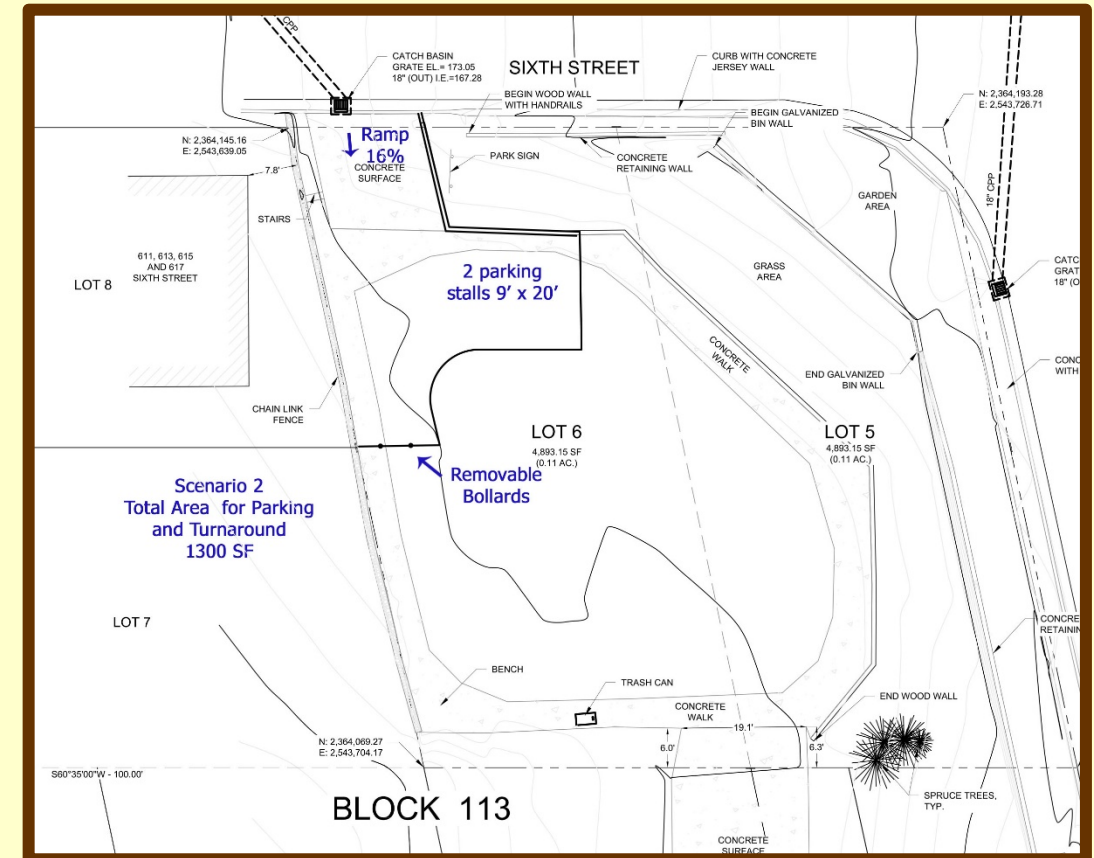
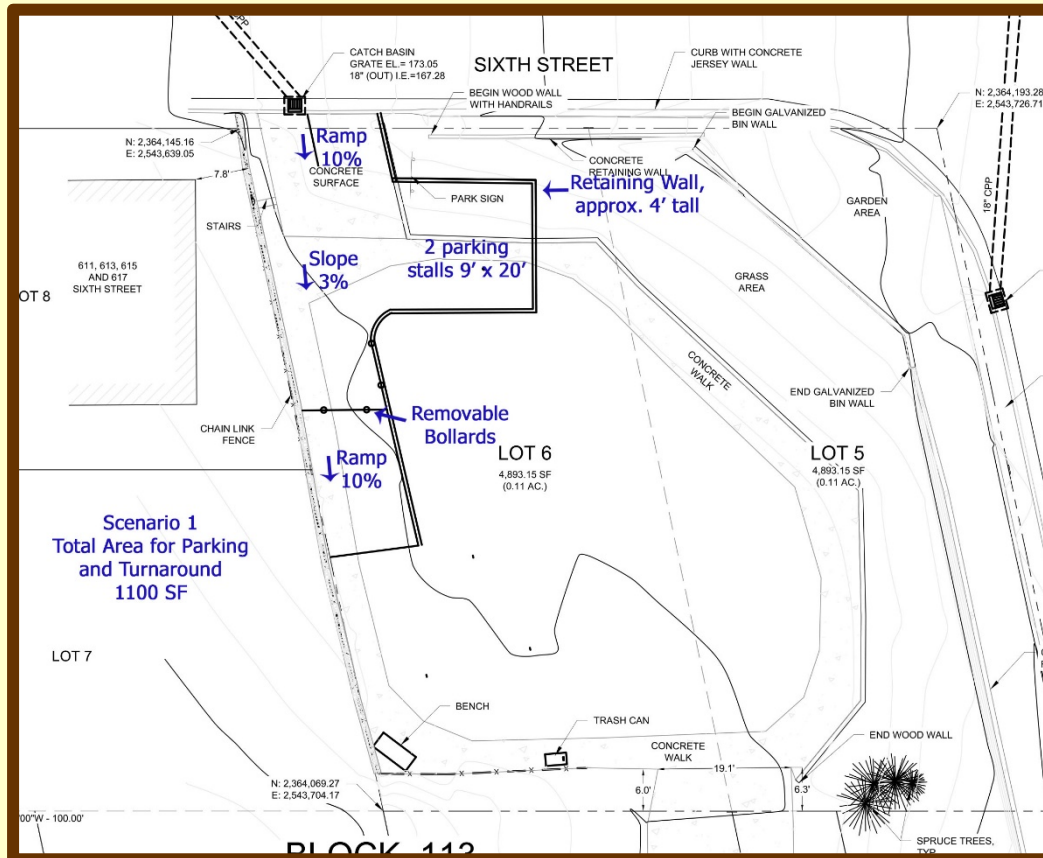
# Park Funding

- **\$93,000 2012 Temporary 1% Sales Tax (2017)**
- **\$125,000 FY20 CIP General Sales Tax**



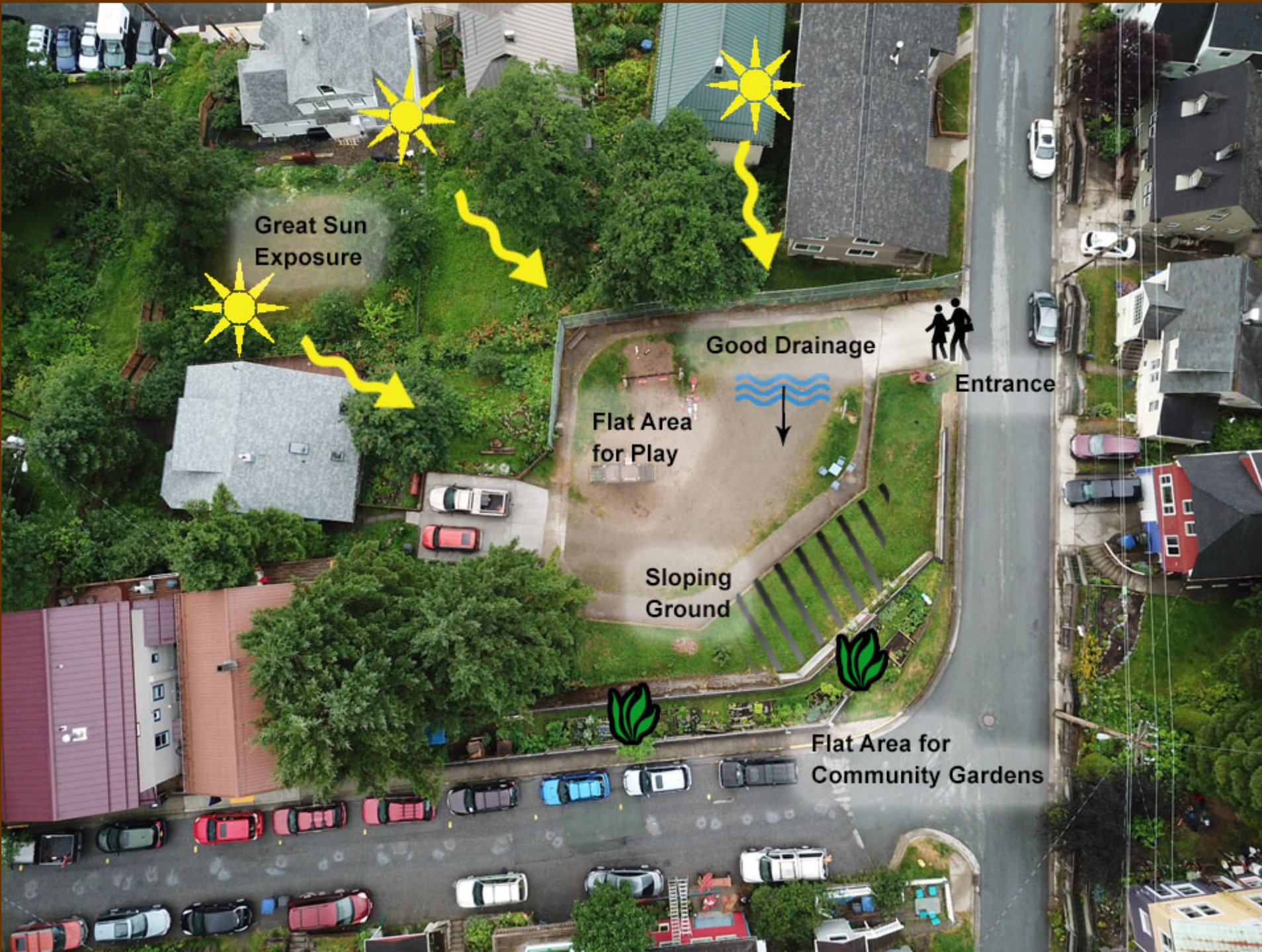
# CBJ – Neighbor Access Agreement

- CBJ grants a permanent easement to the neighboring property for two parking spaces, access to the parking spaces, and pedestrian access to the neighboring property.
- The easement runs in perpetuity with land.
- With notice, CBJ can grant vehicular access to the property if needed for large deliveries.
- CBJ constructs parking spaces and access, neighbor property owners maintain the spaces and access.



- **Rot**
- **Corrosion**
- **Trip Hazards**
- **Playground Safety Issues**





# Opportunities

- ❖ Great Aspect/Sun
- ❖ Good Drainage
- ❖ Flat Areas for Activities in Park
- ❖ Narrow Flat Areas for Activities at Street Grade
- ❖ Topography in Park
- ❖ Walkable Neighborhood
- ❖ Good Views in and Out
- ❖ Close to Homes

# Spatial Analysis

- Play Structures require safety zones
- Occasional vehicular access to private driveway











# Neighborhood Park Ideas

Can it be something other than a "playground"  
 - give up the playground equipment?  
 Open area - park - ?

Swings 6' around

Keep it simple!!  
 min swings, but could live without.

House for community garden?  
 Water fountain?

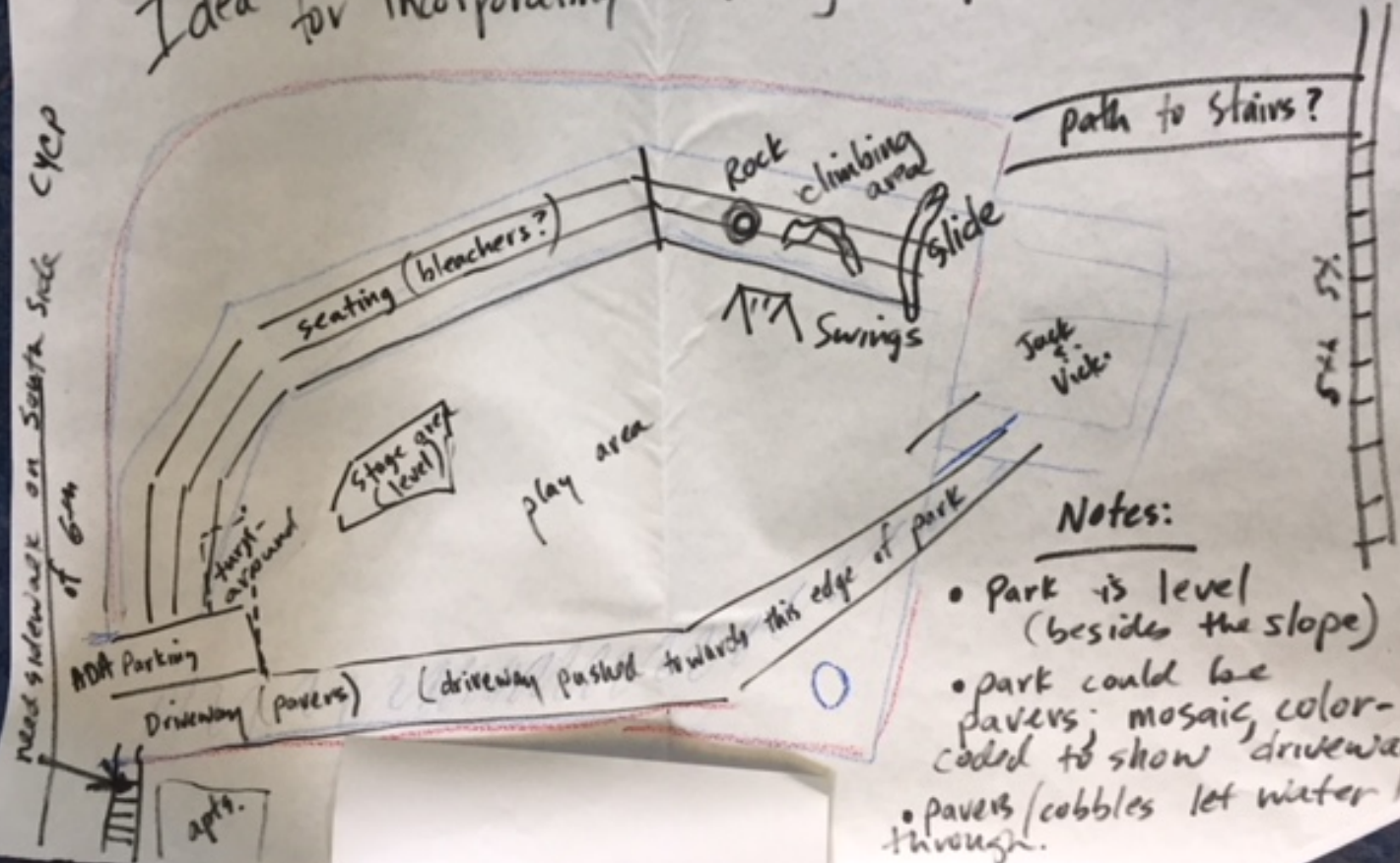
Kennedy



6th St

Chicken Yard Park

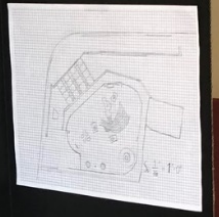
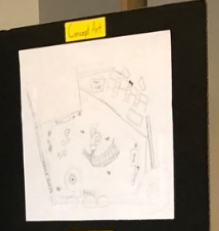
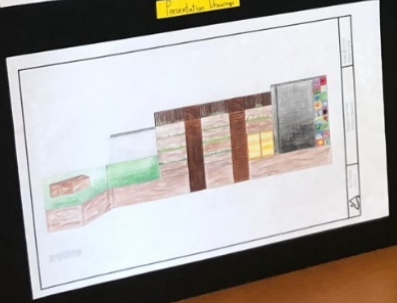
Idea: for incorporating a seating and performance area.



Notes:

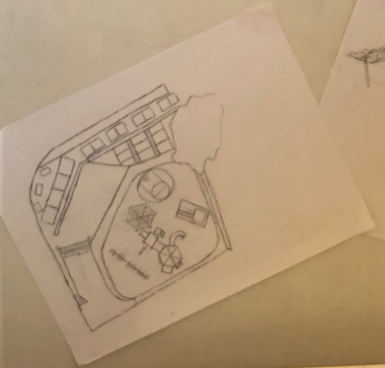
- Park is level (besides the slope)
- park could be pavers; mosaic, color-coded to show driveway
- pavers/cobbles let water through.

# CHICKEN YARD PARK

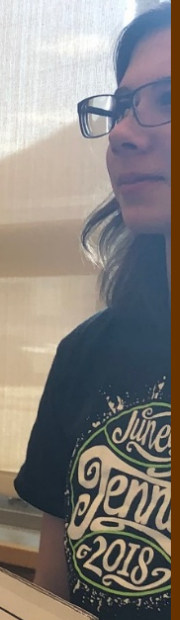


IDHS Ideas

# CHICKEN YARD PARK



EVERY DAY, THOUSANDS  
OF  
**INNOCENT  
PLANTS**  
ARE KILLED BY VEGETARIANS  
HELP END THE VIOLENCE  
EAT



# Project Timeline

January	Community Meeting and Planning
February- March	Design
April	Bid
June-September	Construction

Contact: [Keri.Williamson@juneau.org](mailto:Keri.Williamson@juneau.org) , 586-0800

Website: [Juneau.org/parks-recreation/projects/entry/57835](http://Juneau.org/parks-recreation/projects/entry/57835)





**We  
Want  
Your  
Ideas**