

City and Borough of Juneau
Engineering Department
155 South Seward Street
Juneau, Alaska 99801
Telephone: 586-0490 FAX: 586-0897

ERRATA SHEET 1

THE CITY AND BOROUGH OF JUNEAU PUBLICATION August 2011 of the STANDARD DETAILS

ERRATA DATE: October 26, 2015

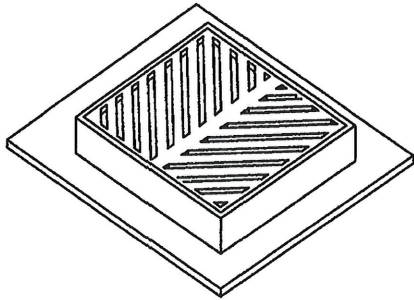
The following item of the Standard Details is modified as herein indicated. All other items remain the same. Please make the following correction to your copy of the above mentioned Standard Details.

| Item No. | Standard No. | Standard Name | Correction |
|----------|--------------|--|---|
| 1 | 304A | Type III Catch Basin | <i>Delete</i> in its entirety and <i>replace</i> with Standard 304A, dated August 2015. |
| 2 | 407 | Mainline Valve | <i>Delete</i> in its entirety and <i>replace</i> with Standard 407, dated August 12, 2015 |
| 3 | 419 | Residential Customer Line Water Service Connection | <i>Delete</i> in its entirety and <i>replace</i> with Standard 419, dated August 28, 2015 |

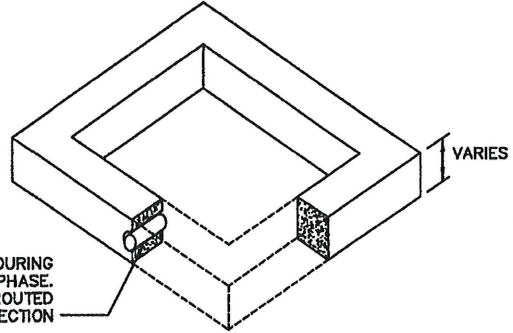
By: _____

John Bohan, P.E.
Chief CIP Engineer

Date: _____

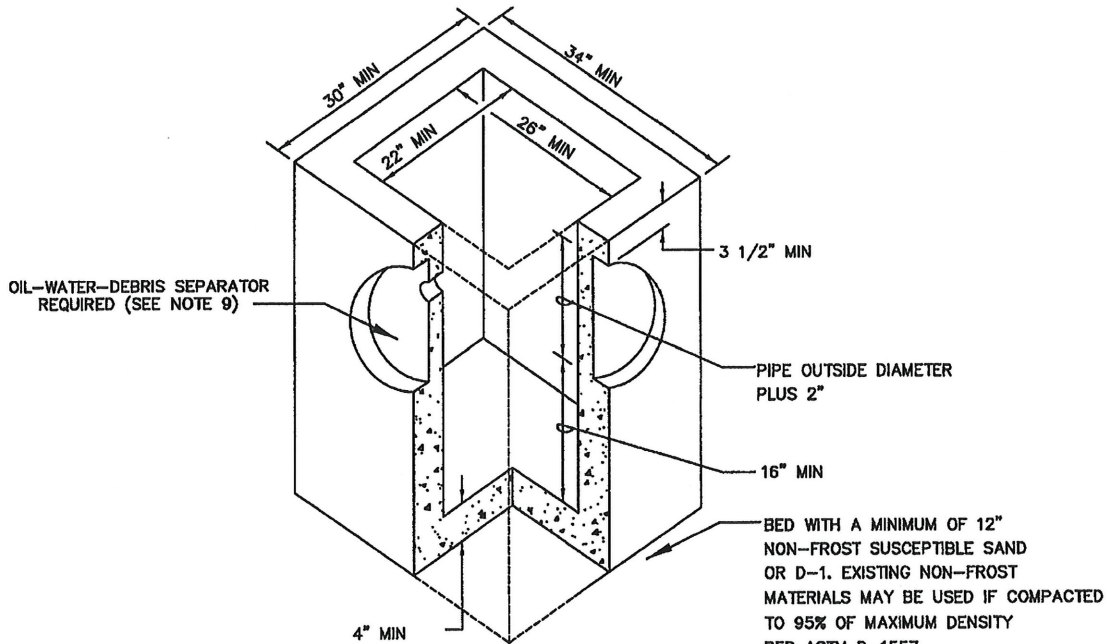


FRAME & GRATE



1" PVC PERMITTED DURING CONSTRUCTION PHASE. PLUGGED AND GROUTED PRIOR TO FINAL INSPECTION

CONCRETE SECTION

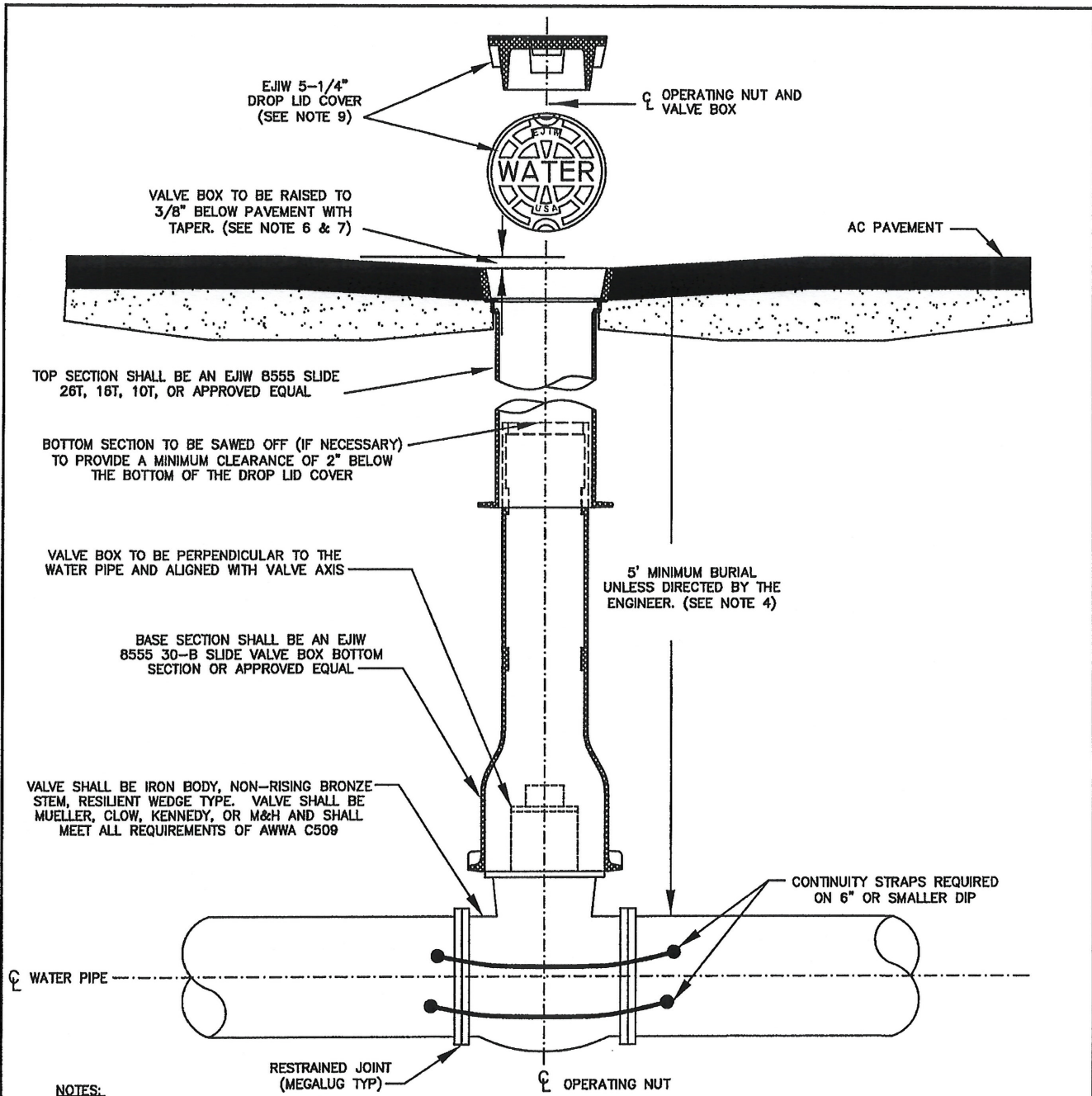


CATCH BASIN

NOTES

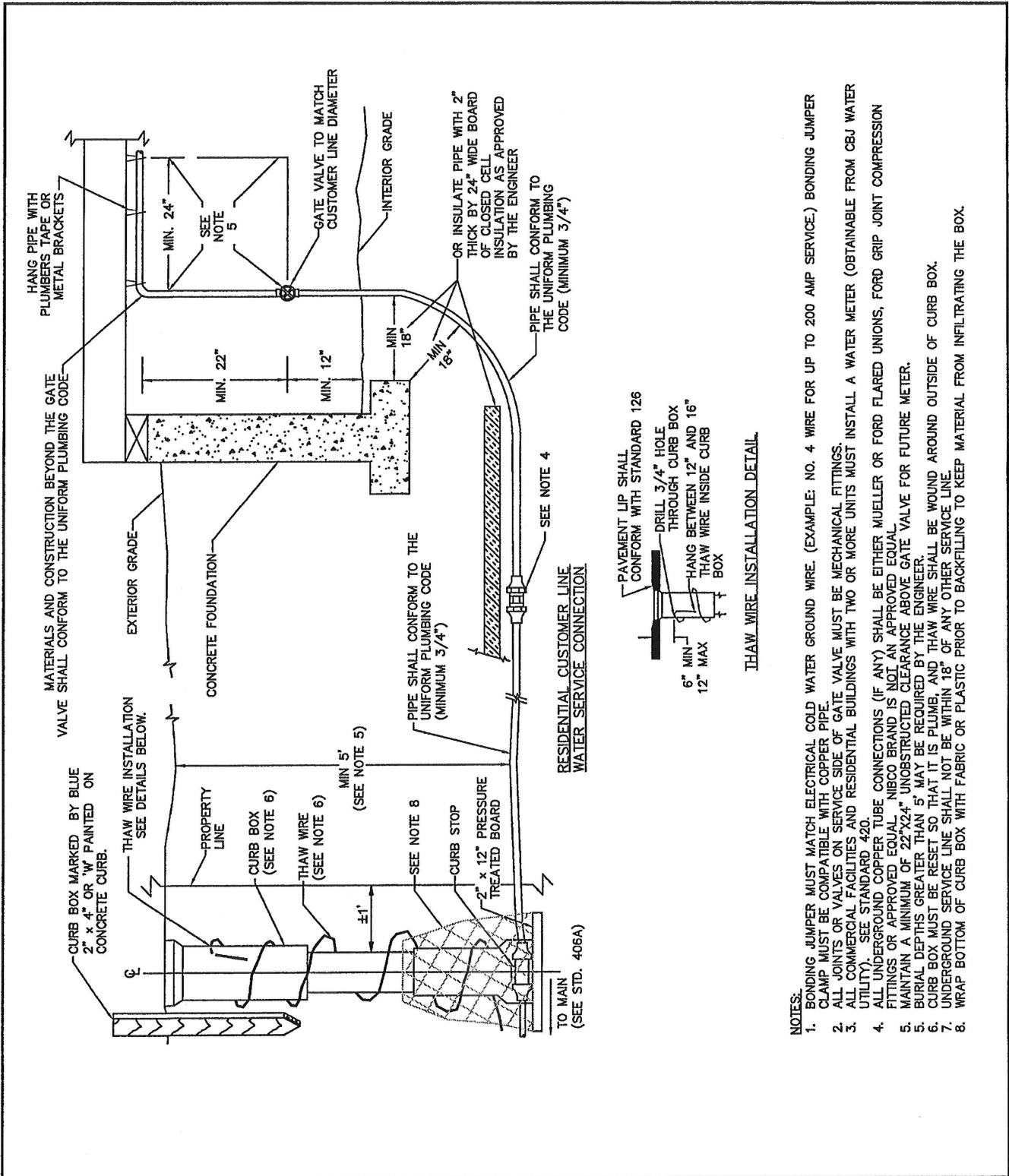
1. FOR USE WITH TWO INLET/OUTLET PIPES OF DIAMETER 12" OR SMALLER. FOR LARGER AND/OR MORE INLET/OUTLET PIPES OR IF CATCH BASIN IS DEEPER THAN 4' FROM FINISH GRADE TO SUMP, INSTALL A TYPE I OR TYPE II STORM DRAIN MANHOLE (SEE STANDARD 303).
2. ENTIRE KNOCKOUT IS TO BE REMOVED AND SEALED SHUT AROUND PIPE. ALL PIPES ARE TO EXTEND MIN 1" AND MAX 3" INTO CATCH BASIN. GROUT INTERIOR AND EXTERIOR BETWEEN FRAME, SECTIONS, AND CATCH BASIN.
3. FRAME AND GRATE SHALL BE DUCTILE IRON. FRAME MAY BE CAST INTO THE TOP UNIT OR PLACED OVER THE OPENING AS APPROVED BY THE ENGINEER. FRAME AND GRATE SHALL BE OF A TYPE THAT WILL NOT CREATE A HAZARD FOR BICYCLE TRAFFIC.
4. CATCH BASIN SHALL MEET HIGHWAY STANDARD-20 LOAD REQUIREMENTS.
5. MINIMUM STEEL SHALL BE SPECIFIED BY ASTM C-478-69.
6. MINIMUM SUMP DEPTH SHALL BE 16".
7. ADJUSTING RING SHALL BE THE SAME SIZE AS THE CATCH BASIN.
8. THE AREA BETWEEN THE TOP OF THE CATCH BASIN AND THE FRAME SHALL BE FORMED AND FILLED WITH CONCRETE MEETING THE REQUIREMENTS OF CBJ SPECIFICATION 03302 - CONCRETE STRUCTURES. NO BRICKS, WOOD OR OTHER MATERIALS PERMITTED FOR ADJUSTING GRADE.
9. ALL CATCH BASINS THAT EMPTY INTO AN OPEN DRAINAGE SHALL BE FITTED WITH AN OIL-WATER-DEBRIS SEPARATOR DEVICE AS DIRECTED BY THE ENGINEER.

| | | | |
|---------------------------|----------------------|------------------------------------|---------------|
| SCALE: NTS | DATE: 12/6/96 | CITY AND BOROUGH OF JUNEAU, ALASKA | |
| DRAWN BY: DRW | CHECKED BY: STAFF | TYPE III CATCH BASIN | |
| APPROVED BY: <i>JB</i> | 8-28-15 | REVISED: August 2015 | STANDARD 304A |

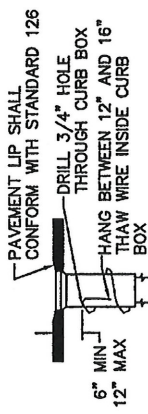


- NOTES:**
1. A VALVE IS REQUIRED FOR EVERY 500' OF STRAIGHT MAINLINE OR AS DIRECTED BY THE ENGINEER.
 2. A MINIMUM OF 2 VALVES ARE REQUIRED AT ALL TEES IN A MAINLINE. A MINIMUM OF 3 VALVES ARE REQUIRED AT ALL 4-WAY CROSSES IN A MAINLINE. TEES AND CROSSES THAT FEED SERVICES AND FIRE HYDRANTS ARE PLACED AS DIRECTED BY THE ENGINEER.
 3. MAINLINE VALVES REQUIRE THRUST BLOCKS AT THE DIRECTION OF THE ENGINEER.
 4. IF WATER MAIN IS MORE THAN 6' DEEP, USE 4" ID CAST IRON SOIL PIPE WITH TOP SECTION EJIW 8555 SLIDE(26T,16T OR 10T) VALVE BOX.
 5. THIS DETAIL APPLIES TO ALL MAINLINE VALVES AND ALL WATER VALVES 4" IN DIAMETER OR GREATER.
 6. VALVE BOXES ARE TO BE RAISED DURING PAVING OPERATIONS A MINIMUM OF 3/8", MAXIMUM OF 5/8" BELOW FINISHED PAVEMENT. VALVE BOXES THAT DO NOT MEET GRADE SPECIFICATIONS SHALL BE SAWCUT, RAISED TO GRADE AND RESURFACED PER STANDARD DETAIL 126 - CONCRETE COLLAR.
 7. VALVE BOXES WITHIN GRAVEL ROADWAYS ARE TO BE SET 6" TO 8" BELOW FINISHED GRADE.
 8. NO MORE THAN 1 VALVE BOX PAVING RISER IS ALLOWED PER VALVE.
 9. VALVE BOX COVER SHALL BE 5-1/4" DROP LID TYPE WITH 1" RAISED LETTERING (RECESSED FLUSH) AND 2 CLOSED PICKHOLES.

| | | | |
|-----------------------------------|-----------------------|------------------------------------|--|
| SCALE: NTS | DATE: 9/8/98 | CITY AND BOROUGH OF JUNEAU, ALASKA | |
| DRAWN BY: TAD | CHECKED BY: STAFF | MAINLINE VALVE | |
| APPROVED BY: <i>JS 8-28-15</i> | REVISED: 8/12/2015 | STANDARD 407 | |

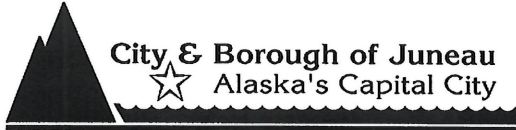


- NOTES:**
1. BONDING JUMPER MUST MATCH ELECTRICAL COLD WATER GROUND WIRE. (EXAMPLE: NO. 4 WIRE FOR UP TO 200 AMP SERVICE.) BONDING JUMPER CLAMP MUST BE COMPATIBLE WITH COPPER PIPE.
 2. ALL JOINTS OR VALVES ON SERVICE SIDE OF GATE VALVE MUST BE MECHANICAL FITTINGS.
 3. ALL COMMERCIAL FACILITIES AND RESIDENTIAL BUILDINGS WITH TWO OR MORE UNITS MUST INSTALL A WATER METER (OBTAINABLE FROM CBJ WATER UTILITY). SEE STANDARD 420.
 4. ALL UNDERGROUND COPPER TUBE CONNECTIONS (IF ANY) SHALL BE EITHER MUELLER OR FORD FLARED UNIONS, FORD GRIP JOINT COMPRESSION FITTINGS OR APPROVED EQUAL. NIBCO BRAND IS NOT AN APPROVED EQUAL.
 5. MAINTAIN A MINIMUM OF 22"x24" UNOBSTRUCTED CLEARANCE ABOVE GATE VALVE FOR FUTURE METER.
 6. BURIAL DEPTHS GREATER THAN 5' MAY BE REQUIRED BY THE ENGINEER.
 7. CURB BOX MUST BE RESET SO THAT IT IS PLUMB, AND THAW WIRE SHALL BE WOUND AROUND OUTSIDE OF CURB BOX.
 8. UNDERGROUND SERVICE LINE SHALL NOT BE WITHIN 18" OF ANY OTHER SERVICE LINE.
 9. WRAP BOTTOM OF CURB BOX WITH FABRIC OR PLASTIC PRIOR TO BACKFILLING TO KEEP MATERIAL FROM INFILTRATING THE BOX.



THAW WIRE INSTALLATION DETAIL

| | | | | | |
|---|--|--------------------|--|---|--|
| SCALE: NTS | | 12/12/96 | | CITY AND BOROUGH OF JUNEAU, ALASKA RESIDENTIAL CUSTOMER LINE WATER SERVICE CONNECTION | |
| DRAWN BY: DRW | | CHECKED BY: STAFF | | | |
| APPROVED BY: <i>[Signature]</i> 8-28-15 | | REVISED: 8/28/2015 | | STANDARD 419 | |



City and Borough of Juneau
Engineering Department
155 South Seward Street
Juneau, Alaska 99801
Telephone: 586-0490 FAX: 586-0897

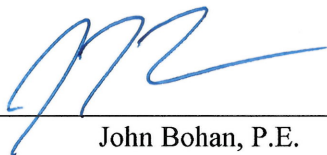
ERRATA SHEET 2

**THE CITY AND BOROUGH OF JUNEAU PUBLICATION August 2011 of the
STANDARD DETAILS**

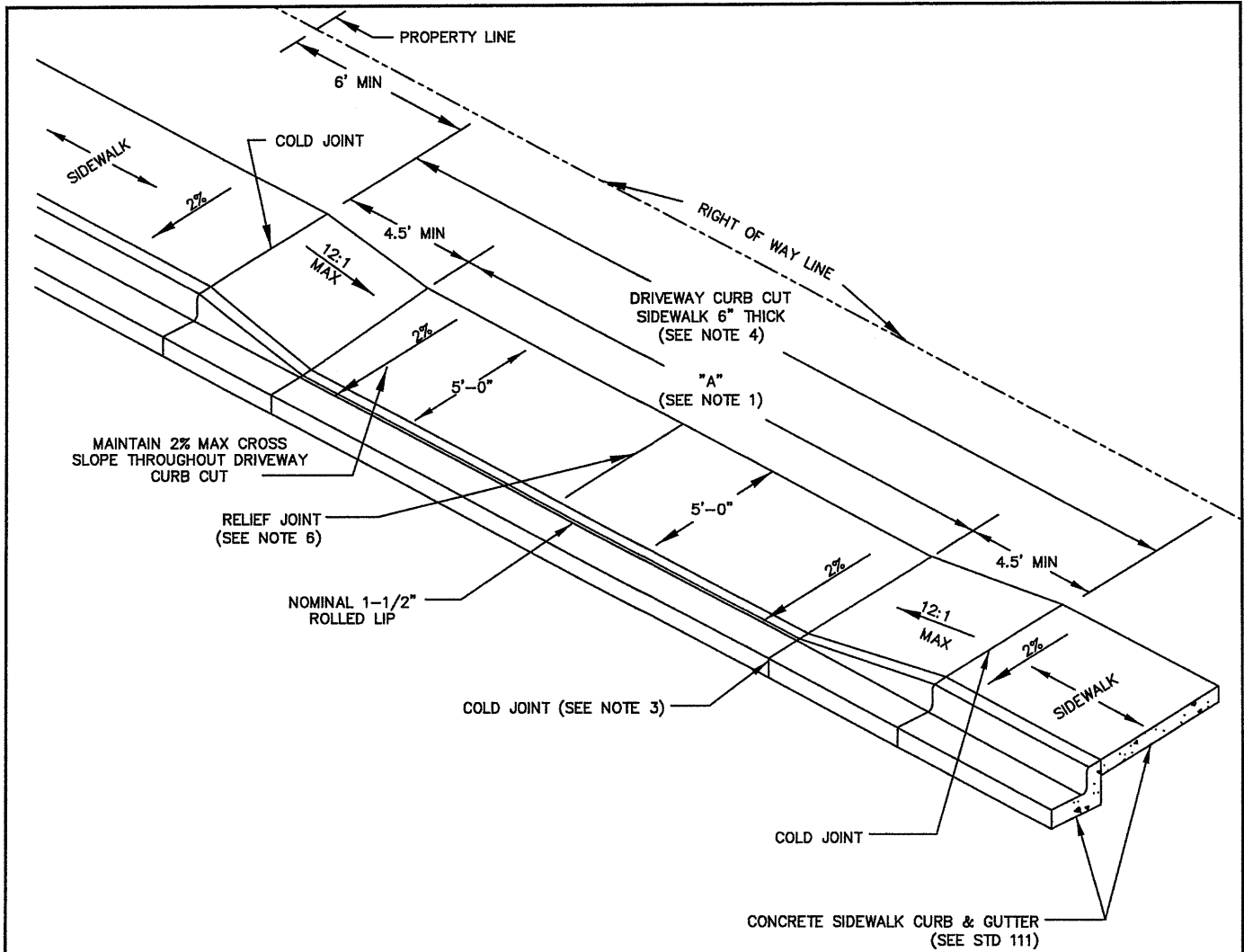
ERRATA DATE: October 28, 2015

The following item of the Standard Details is modified as herein indicated. All other items remain the same. Please make the following correction to your copy of the above mentioned Standard Details.

| Item No. | Standard No. | Standard Name | Correction |
|-----------------|---------------------|----------------------|---|
| 1 | 105 | Driveway Curb Cut | <i>Delete</i> in its entirety and <i>replace</i> with Standard 105, dated September 2015. |

By: 
John Bohan, P.E.
Chief CIP Engineer
Date: 10/28/15

Total number of pages contained in Errata Sheet: 2



NOTES

- "A" EQUALS WIDTH OF DRIVEWAY AT PROPERTY LINE. MAXIMUM WIDTH SHALL BE 24' FOR SINGLE FAMILY RESIDENCES AND 32' FOR COMMERCIAL FACILITIES OR COMBINED DRIVEWAYS. DRIVEWAYS MAY NOT BE CONSTRUCTED WITHIN 6' OF THE PROPERTY LINE OR 40' FROM THE EDGE OF PAVEMENT AT INTERSECTIONS.
- ALL CONCRETE SHALL MEET THE REQUIREMENTS OF STANDARD SPECIFICATION 03303 - SIDEWALK CURB AND GUTTER. THE CURING COMPOUND CONCRETE INTERNATIONAL CORPORATION ASHFORD FORMULA OR APPROVED EQUAL SHALL BE APPLIED PER THE MANUFACTURER'S RECOMMENDATIONS.
- COLD JOINT REQUIRED BETWEEN SIDEWALK AND DRIVEWAY AND BETWEEN SIDEWALK AND CURB.
- ALL CONCRETE WITHIN THE DRIVEWAY CURB CUT SHALL BE A MINIMUM 6" THICK AND SHALL BE POURED ON A 4" BASE OF D-1 COMPACTED TO 95% OF ITS MAXIMUM DENSITY. FOR ASPHALT SIDEWALKS, ALL ASPHALT WITHIN THE DRIVEWAY CURB CUT SHALL BE A MINIMUM OF 2.5" THICK
- 6"x 6" #10 GAUGE WIRE MESH REINFORCEMENT INSTALLED AT MID-DEPTH OR #4 REBAR SPACED APPROPRIATELY MAY BE SUBSTITUTED FOR FIBER MESH REINFORCED CONCRETE. ALL STEEL MUST HAVE A MINIMUM OF 2" OF CONCRETE COVER.
- RELIEF JOINT REQUIRED IF "A" IS GREATER THAN 15'.

| | | | |
|---------------|----------------------|--|--|
| SCALE: NTS | DATE: 5/5/99 | CITY AND BOROUGH OF JUNEAU, ALASKA DRIVEWAY CURB CUT | |
| DRAWN BY: TAD | CHECKED BY: JB/STAFF | | |
| APPROVED BY: | REVISED: Sept 2015 | STANDARD 105 | |