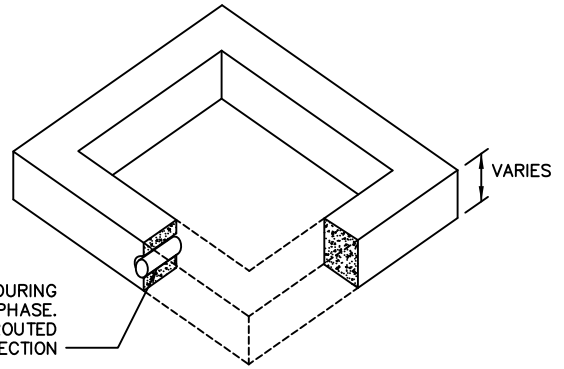
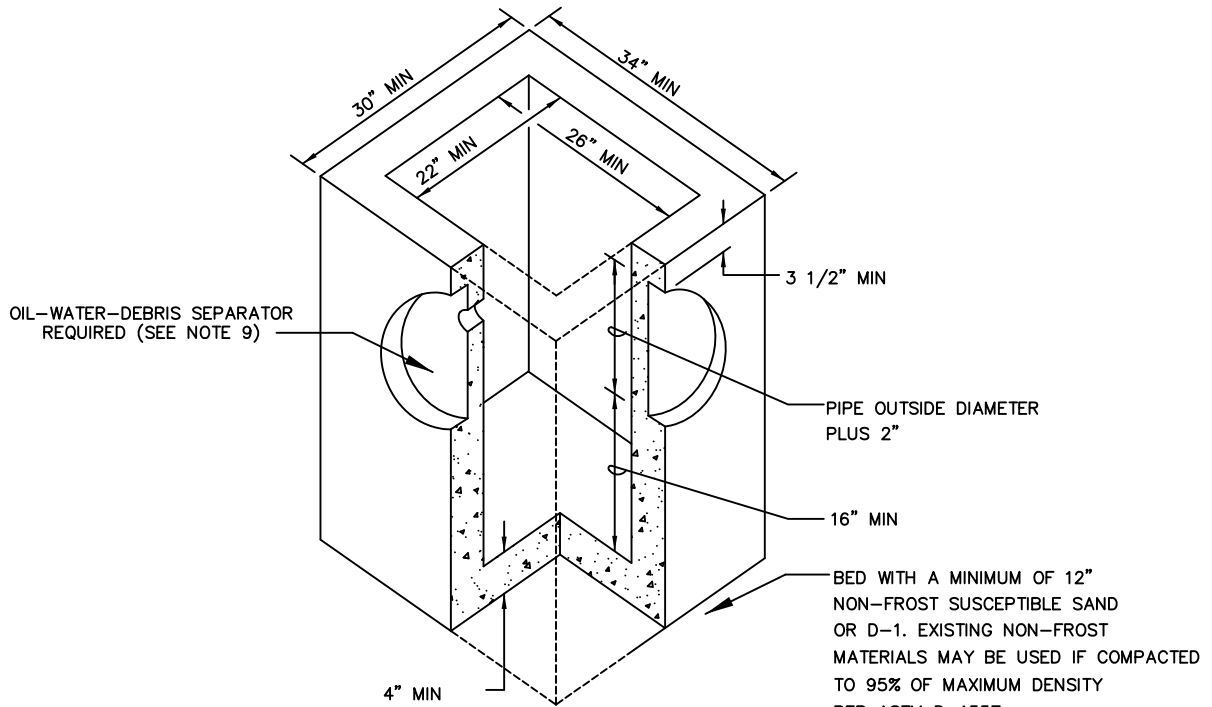


FRAME & GRATE



1" PVC PERMITTED DURING CONSTRUCTION PHASE. PLUGGED AND GROUTED PRIOR TO FINAL INSPECTION

CONCRETE SECTION



CATCH BASIN

NOTES

1. FOR USE WITH TWO INLET/OUTLET PIPES OF DIAMETER 12" OR SMALLER. FOR LARGER AND/OR MORE INLET/OUTLET PIPES OR IF CATCH BASIN IS DEEPER THAN 4' FROM FINISH GRADE TO SUMP, INSTALL A TYPE I OR TYPE II STORM DRAIN MANHOLE (SEE STANDARD 303).
2. ENTIRE KNOCKOUT IS TO BE REMOVED AND SEALED SHUT AROUND PIPE. ALL PIPES ARE TO EXTEND MIN 1" AND MAX 3" INTO CATCH BASIN. GROUT INTERIOR AND EXTERIOR BETWEEN FRAME, SECTIONS, AND CATCH BASIN.
3. FRAME AND GRATE SHALL BE DUCTILE IRON. FRAME MAY BE CAST INTO THE TOP UNIT OR PLACED OVER THE OPENING AS APPROVED BY THE ENGINEER. FRAME AND GRATE SHALL BE OF A TYPE THAT WILL NOT CREATE A HAZARD FOR BICYCLE TRAFFIC.
4. CATCH BASIN SHALL MEET HIGHWAY STANDARD-20 LOAD REQUIREMENTS.
5. MINIMUM STEEL SHALL BE SPECIFIED BY ASTM C-478-69.
6. MINIMUM SUMP DEPTH SHALL BE 16".
7. ADJUSTING RING SHALL BE THE SAME SIZE AS THE CATCH BASIN.
8. THE AREA BETWEEN THE TOP OF THE CATCH BASIN AND THE FRAME SHALL BE FORMED AND FILLED WITH CONCRETE MEETING THE REQUIREMENTS OF CBJ SPECIFICATION 03302 - CONCRETE STRUCTURES. NO BRICKS, WOOD OR OTHER MATERIALS PERMITTED FOR ADJUSTING GRADE.
9. ALL CATCH BASINS THAT EMPTY INTO AN OPEN DRAINAGE SHALL BE FITTED WITH AN OIL-WATER-DEBRIS SEPARATOR DEVICE AS DIRECTED BY THE ENGINEER.

SCALE: NTS	DATE: 12/6/96	CITY AND BOROUGH OF JUNEAU, ALASKA	
DRAWN BY: DRW	CHECKED BY: STAFF	TYPE III CATCH BASIN	
APPROVED BY:	REVISED: August 2015	STANDARD 304A	