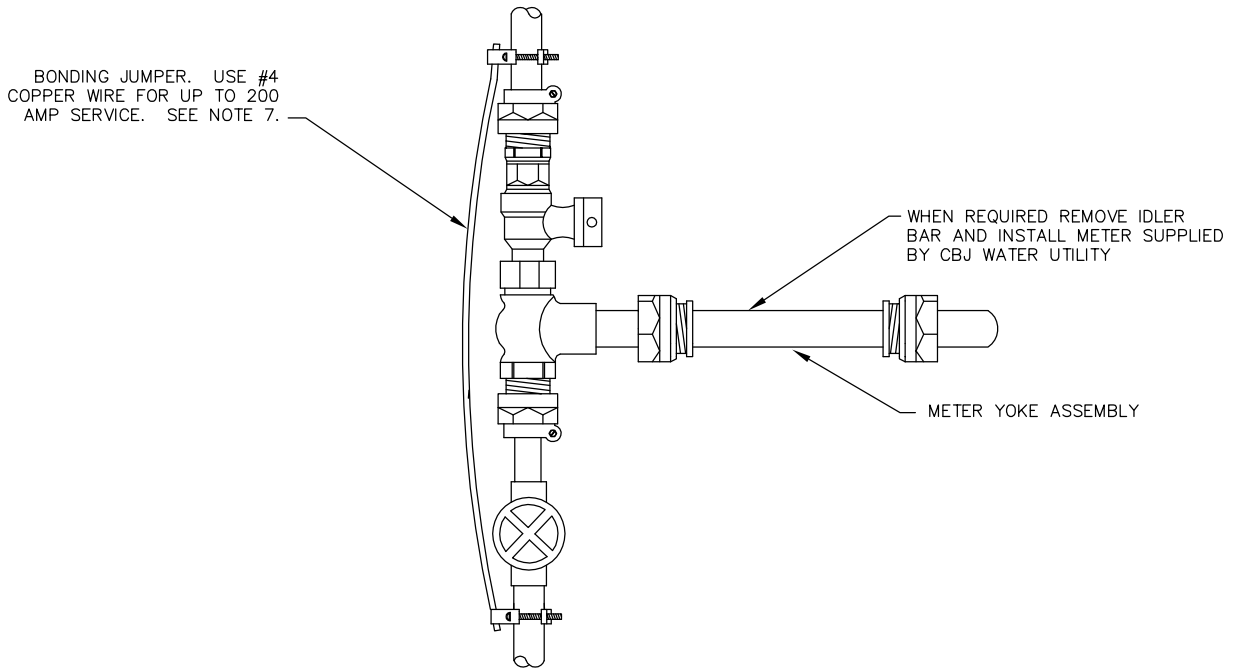


1.5" or LARGER METER



3/4" or 1" METER YOKE

**NOTES:**

1. ALL COMMERCIAL FACILITIES AND RESIDENTIAL BUILDINGS WITH TWO OR MORE UNITS MUST INSTALL A WATER METER.
2. INSTALL WITH BASE OF METER PARALLEL TO FLOOR.
3. INSTALL THREE 22 GAUGE MULTICOLORED CONDUCTORS IN 1/2" ELECTRICAL CONDUIT FROM MAIN ENTRANCE OF BUILDING TO WITHIN 12" OF METER REGISTER (NOT TO EXCEED 100'). ALLOW AN EXTRA 2 FEET OF WIRE FOR METER CONNECTIONS.
4. PROVIDE MINIMUM 18" CLEARANCE ABOVE METER, AND MINIMUM 12" CLEARANCE EACH SIDE AND BELOW METER.
5. FOR 1.5" OR 2" METERS, COUPLINGS SHALL BE FORD LOK-PAK METER COUPLING CF34 (COPPER), CF35 (IRON), CF37 (PVC), OR AN APPROVED EQUAL WITH IDLER BAR.
6. WATER METERING SHALL BE COORDINATED WITH AND APPROVED BY THE CBJ WATER UTILITY.
7. BONDING JUMPER MUST MATCH ELECTRICAL COLD WATER GROUND WIRE. CLAMPS SHALL BE COMPATIBLE WITH COPPER PIPE.
8. NO SERVICE TAPS ALLOWED PRIOR TO METER INSTALLATION.
9. INSTALL IDLER BAR BETWEEN FLANGES AND VERIFY METER DIMENSION WITH CBJ WATER UTILITY PRIOR TO INSTALLATION.

SCALE: NTS	DATE: 12/12/96	CITY AND BOROUGH OF JUNEAU, ALASKA	
DRAWN BY: DRW	CHECKED BY: STAFF	METER INSTALLATION	
APPROVED BY: <i>DRW</i>	REVISED: 8/14/2011	STANDARD 420	