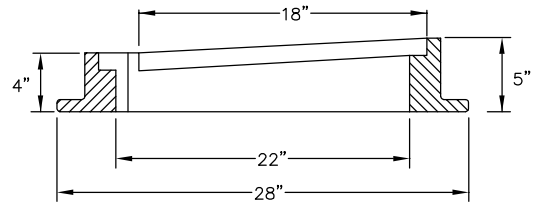


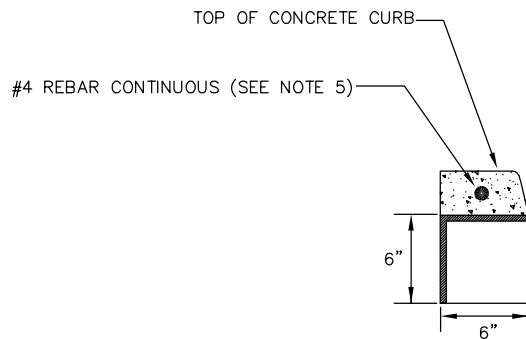
FRONT VIEW



NOTE: FRAME SHALL BE SET LEVEL.

SIDE VIEW

FRAME & GRATE



TYPE B HOOD

NOTES

1. FRAME AND GRATE SHALL BE DUCTILE IRON AND SHALL BE IFCO 571 OR AN APPROVED EQUAL.
2. GRATE SHALL HAVE 1" DIAGONAL BARS WITH 1 1/2" OPENINGS.
3. FRAME AND GRATE SHALL BE OF A TYPE THAT WILL NOT CREATE A HAZARD FOR BICYCLE TRAFFIC.
4. INSTALL RIGHT OR LEFT GRATES FOR BICYCLE SAFETY AS DETERMINED BY THE ENGINEER.
5. USE TYPE B HOOD ONLY. A TYPE B HOOD REQUIRES A MINIMUM OF 6 FEET OF # 4 REBAR CONTINUOUS, CENTERED ON THE HOOD.
6. FRAME SHALL BE SET ON SOLID RISER OR FORMED AND POURED IN PLACE USING CONCRETE MEETING THE REQUIREMENTS OF CBJ SPECIFICATION 03302 - CONCRETE STRUCTURES. NO BRICK, WOOD, OR OTHER MATERIAL IS PERMITTED FOR ADJUSTING GRADE.
7. 1/4" GROUT MAXIMUM MAY BE USED TO BED FRAME.

SCALE: NTS	DATE: 12/6/96	CITY AND BOROUGH OF JUNEAU, ALASKA CURB INLET FRAME, GRATE & HOOD
DRAWN BY: DRW	CHECKED BY: STAFF	
APPROVED BY: <i>DRW</i>	REVISED: 8/14/2011	STANDARD 308