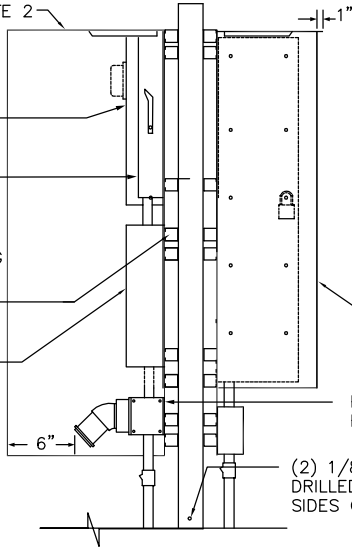


1/4" GALV. MILD STEEL PLATE ON BOTH SIDES AND TOP OF EQUIPMENT. SEE NOTE 2

METER DISCONNECT
PORTABLE GENERATOR TRANSFER SWITCH

HOT DIPPED GALVANIZED FRAMING ERECTOR CHANNEL 1-1/2" x 1-1/2"

GENSET C/B



BACK TO PACK MOUNTING

1/4" GALV. MILD STEEL PLATE ON BOTH SIDES AND TOP OF EQUIPMENT. SEE NOTE 2

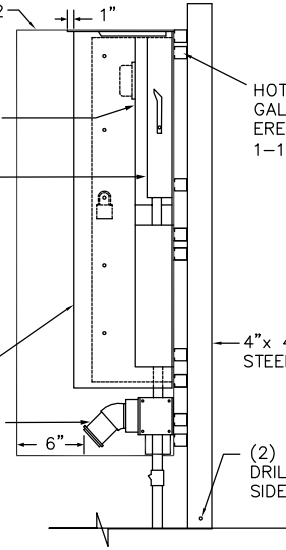
METER DISCONNECT
PORTABLE GENERATOR TRANSFER SWITCH

PADLOCK LOCATION SEE SECTION Y-Y

PUMP CONTROL CABINET SHIELD

PORTABLE GENERATOR RECEPTACLE SEE NOTE X

(2) 1/8" WEEP HOLES DRILLED ON OPPOSITE SIDES OF EACH POST



SIDE BY SIDE MOUNTING

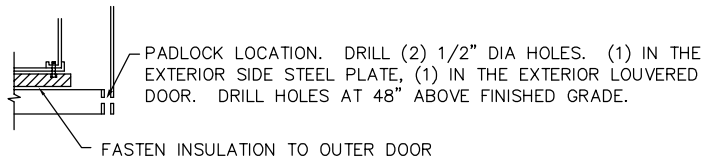
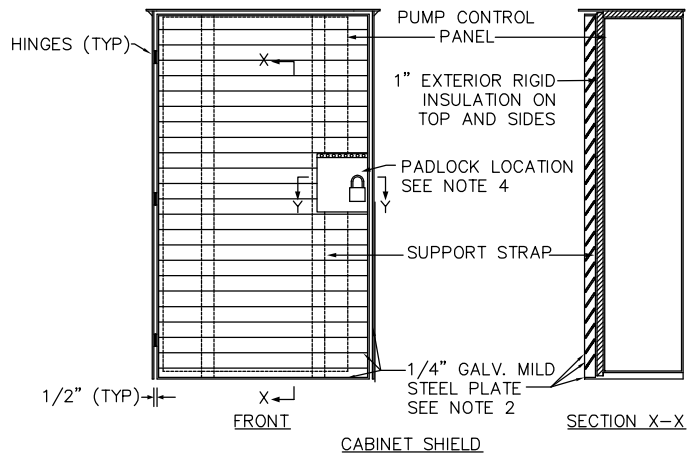
HOT DIPPED GALVANIZED FRAMING ERECTOR CHANNEL 1-1/2" x 1-1/2"

4"x 4"x 10' GALVANIZED STEEL POST SEE SHEET 5A

(2) 1/8" WEEP HOLES DRILLED ON OPPOSITE SIDES OF EACH POST

NOTES:

1. LABEL METER DISCONNECT, PORTABLE GENSET CIRCUIT BREAKER, AND PORTABLE GENSET TRANSFER SWITCH WITH ENGRAVED PHENOLIC LABELS WITH 1" TALL CAPITAL LETTERS.
2. PROVIDE 1/4" GALVANIZED MILD STEEL ON BOTH SIDES AND TOP OF THE METER/DISCONNECT, TRANSFER SWITCH, AND THE GENSET CIRCUIT BREAKER AS SHOWN, SO THAT THE METAL EXTEND 6" BEYOND THE END OF THE GENSET RECEPTACLE.
3. PROVIDE PUMP CONTROL PANEL PROTECTION WITH LOCKING DOOR CONSTRUCTED FROM 1/4" GALVANIZED MILD STEEL PLATE AS SHOWN.
4. SECURE 6" X 6" RUBBER PAD TO EXTERIOR FRONT DOOR WITH GALVANIZED HARDWARE, MOUNT OVER THE PADLOCK.



SECTION Y-Y

DETAIL - CABINET SHIELDS

NTS

SCALE: NTS	DATE: 1/18/00	CITY AND BOROUGH OF JUNEAU, ALASKA	
DRAWN BY: STAFF	CHECKED BY: JB/STAFF	PUMP STATION	
APPROVED BY: <i>DRW</i>	REVISED: 8/14/2011	CABINET SHIELDS	
		STANDARD 220-5	