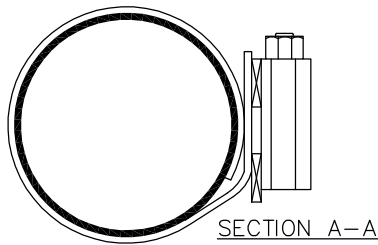


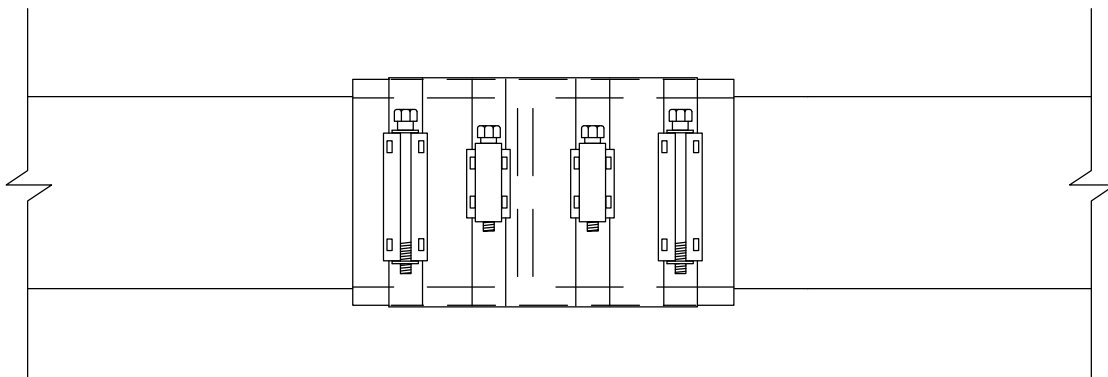
PLAN VIEW

PIPE SIZE	LENGTH OF LSS1 CLAMP
4"	6"
6"	12"
8"	12"
10"	12"
12"	12"
14"	12"
18"	16"
21"	20"
24"	20"
27"	24"
30"	24"



SECTION A-A

ROMAC LSS1 CLAMP COUPLING
 REQUIRED FOR CONNECTIONS WITHIN THE RIGHT-OF-WAY



MISSION "FLEX-SEAL" ADJUSTABLE REPAIR COUPLING
 ALLOWED FOR SERVICE CONNECTIONS OUTSIDE OF RIGHT-OF-WAY

NOTES

1. USE ONLY NON-SHEAR ROMAC INDUSTRIES LSS1 SEWER CLAMP COUPLING FOR CONNECTING SEWER PIPES WITHIN THE RIGHT-OF-WAY.
2. A MISSION "FLEX-SEAL" ADJUSTABLE REPAIR COUPLING, OR APPROVED EQUAL OF APPROPRIATE SIZE AND TYPE AND INSTALLED AS PER MANUFACTURER'S INSTRUCTIONS MAY BE USED FOR CONNECTIONS OUTSIDE THE RIGHT-OF-WAY. FERNCO BRAND AND OTHER RUBBER COUPLINGS ARE NOT APPROVED ALTERNATIVES.
3. BOLTS, WASHERS, NUTS, LUG, AND SHELL SHALL BE STAINLESS STEEL.
4. CONNECTED PIPES SHALL BE CUT PERPENDICULAR AND INSERTED INTO COUPLING SO THAT ENDS ARE FLUSH.
5. WHEN CONNECTING TO AN EXISTING SERVICE USE COUPLING CONFORMING TO THIS DETAIL AT CONNECTION AT PROPERTY LINE.

SCALE: NTS	DATE: 12/2/96	CITY AND BOROUGH OF JUNEAU, ALASKA COUPLING FOR DISSIMILAR SANITARY SEWER PIPES
DRAWN BY: DRW	CHECKED BY: STAFF	
APPROVED BY: <i>DRW</i>	REVISED: 8/14/2011	STANDARD 218