

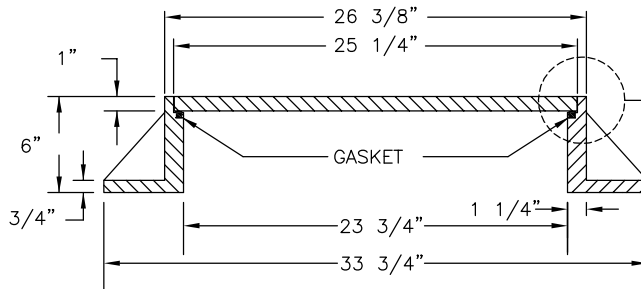
2" CAST LETTERS  
(SEE NOTE 2)

INSTALL NON-SKID MANHOLE COVER PER  
STANDARD 205 GRADE REQUIREMENTS. ALL  
MANHOLES MUST HAVE EGRESS LIDS.

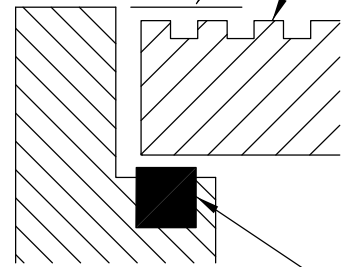
1/2" x 3" x 3/8" NON-SKID PATTERN CAST  
INTEGRAL ON TOP. LUGS FLUSH WITH TOP OF  
FRAME.

PLAN VIEW

ALL MANHOLE COVERS SHALL  
BE MACHINED BELOW FRAME



ELEVATION VIEW



3/8" x 3/8" WATERTIGHT  
NEOPRENE GASKET

GASKET DETAIL

NOTES:

1. FRAME MUST BE MACHINED TO FIT WATERTIGHT NEOPRENE GASKET.
2. MANHOLE COVER SHALL BE WATER TIGHT WITH NO HOLES, SHALL HAVE THE WORD "SEWER", "WATER" OR "STORM DRAIN" CAST IN COVER AND SHALL BE PROVIDED WITH AN INTEGRAL POCKET LIFT HANDLE.
3. FRAME AND MANHOLE COVER DIMENSIONS SHALL BE IN ACCORDANCE WITH OLYMPIC CONSTRUCTION CASTINGS NO. MH30A WITH EGRESS LID, OR AN APPROVED EQUAL.
4. FRAME AND MANHOLE COVER SHALL BE DUCTILE OR CAST IRON AND A TYPE THAT WILL NOT CREATE A HAZARD FOR BICYCLE TRAFFIC.
5. IF MAINLINE IS 20" OR GREATER, PROVIDE MANHOLE WITH 30" OPENING IN COVER & FRAME.
6. ALL MANHOLE COVERS SHALL BE MACHINED BELOW FRAME AS SHOWN IN GASKET DETAIL ABOVE.

SCALE: NTS	DATE: 2/28/98	CITY AND BOROUGH OF JUNEAU, ALASKA STANDARD MANHOLE COVER & FRAME
DRAWN BY: DRW	CHECKED BY: STAFF	
APPROVED BY: <i>DRW</i>	REVISED: 8/14/2011	STANDARD 206A