

Blueprint Downtown Steering Committee Meeting

CBJ Assembly Chambers

August 8, 2019





BLUEPRINT DOWNTOWN

DOWNTOWN JUNEAU'S AREA PLAN



Welcome

- I. Roll Call
- II. Approval of Minutes
 - a. July 18, 2019
- III. Public Participation
- IV. Steering Committee Updates
- V. Draft Chapter 7 Parks, Open Space & Recreation
- VI. Public Participation
- VII. Committee Member Comments
- VIII. Adjournment

CHAPTER 7. PARKS, OPEN SPACE AND RECREATION

- Inventory of downtown public spaces
- Trail Connections and Open Space
- Programming
- Parks
- Recreation

Chapter 7

Parks, Open Space and Recreation

Parks & Recreation in Downtown Juneau

Parks

- Bishop Kenny Memorial Peace Park
- Cathedral Park
- Chicken Yard Park
- Telephone Hill Park
- Capital School Park
- Cope Park
- Gunakadeit Park
- Marine Park
- Mayor Bill Overstreet Park
- Evergreen Cemetery

Trails

- Perseverance/Granite Creek Trail Network
- Flume Trail
- Mount Roberts

Recreation Facilities Inventory

Augustus Brown Pool

Zach Gordon Youth Center

School District Assets

Harborview Elementary School

Marie Drake Planetarium

Juneau Douglas High School

Related Plans

Parks & Rec Master Plan

Waterfront Plan

Willoughby District Land Use Plan

Public Outreach

Summary

Goals & Actions



- Next Meeting Date:

– WEDNESDAY

August 28, 2019, 6 p.m.

CBJ Assembly Chambers

ORDER OF CHAPTERS TO STEERING COMMITTEE

1. Chapter 1 INTRODUCTION (2nd June or 1st July mtg)
 2. Chapter 7 PARKS, OPEN SPACE & RECREATION (July/August)
 3. Chapter 3 NATURAL & HISTORICAL CONTEXT (Aug/Sept)
 4. Chapter 8 TRANSPORTATION, STREETScape & PARKING (Sept/Oct)
 5. Chapter 4 ECONOMIC DEVELOPMENT (Oct/Nov)
 6. Chapter 6 DOWNTOWN ACTIVITIES & TOURISM (Nov/Dec)
 7. Chapter 5 LAND USE, NEIGHBORHOODS & HOUSING (Dec/Jan)
 8. Chapter 2 IMPLEMENTATION/ACTION PLAN (Jan/Feb)
- February – review of draft document as one complete document to be ready for public review draft out in March for X weeks
 - Steering Committee review of public comments, revision of plan as needed
 - Planning Commission Draft Plan –PC COW and PUBLIC HEARING
 - Assembly Draft – Assembly COW and PUBLIC HEARING

Parks, Open Space, and Recreation

- “Programming” as a concept
- Partnerships and maintenance
- Individual parks
- Seawalk and interface with parks
- Trails and trail networks
- Programming at recreational facilities
- Harbors as recreation areas
- Goals and Actions



Programming

- Neighborhood parks have the potential to function as a nucleus of neighborhood activity, where residents can gather for social events, recreational activities, and meetings about community issues, increasing social interaction.
- Neighborhood parks contribute substantially to moderate to vigorous physical activity. This contribution may depend less on size and facilities than on “demand goods” – programming and activities – that draw users to a park.
- Having events at the park, including sports competitions and other attractions, appears to be the strongest correlate of park use and community-level physical activity.
- Park use results from a complex equation that includes not only higher quality recreation facilities but also programming, staffing, fees, hours of operation, marketing, outreach, and perhaps a host of other human factors. (Source, NRPA)
- Parks & Rec departments nationwide are moving away from providing programming and focusing resources on operating facilities with programming provided by partner organizations.

- Community Partnerships
 - Funding
 - Maintenance
 - Programming
 - Outreach
 - Volunteer labor



Maintaining What We Have

- Parks
 - Juneau Park Foundation
 - YEP
- Trails
 - Trail Mix
 - JMBA
- Events/Programs
 - Main Street
 - DBA
 - Clubs, leagues, etc.



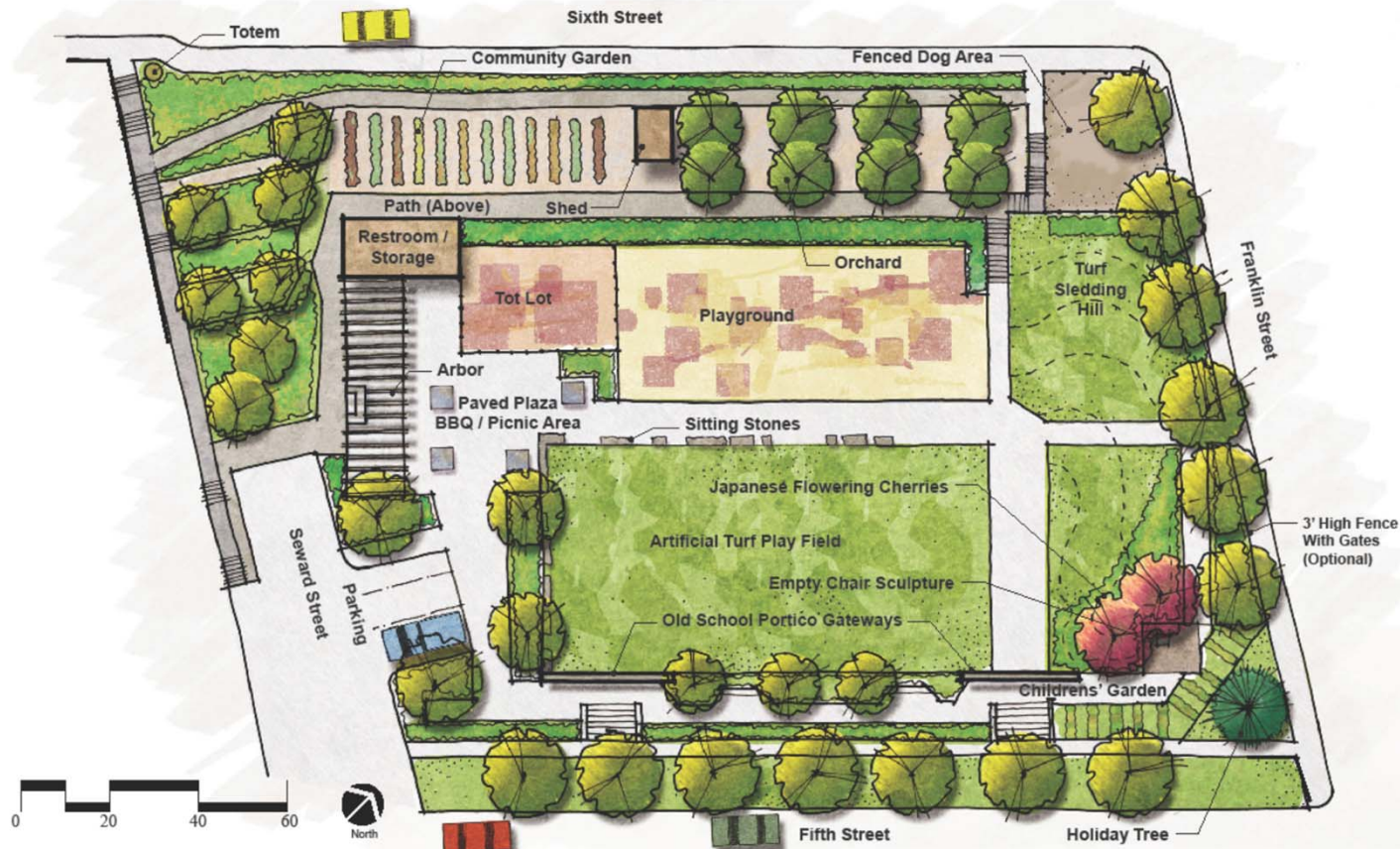
Capital School Park



BLUEPRINT DOWNTOWN
DOWNTOWN JUNEAU'S AREA PLAN



Capital School Park, Cont.



Capital School Park - Preferred Master Plan

December 10, 2012

Juneau, AK  Corvus Design
Landscape Architecture & Planning

BLUEPRINT DOWNTOWN

DOWNTOWN JUNEAU'S AREA PLAN



Cope Park



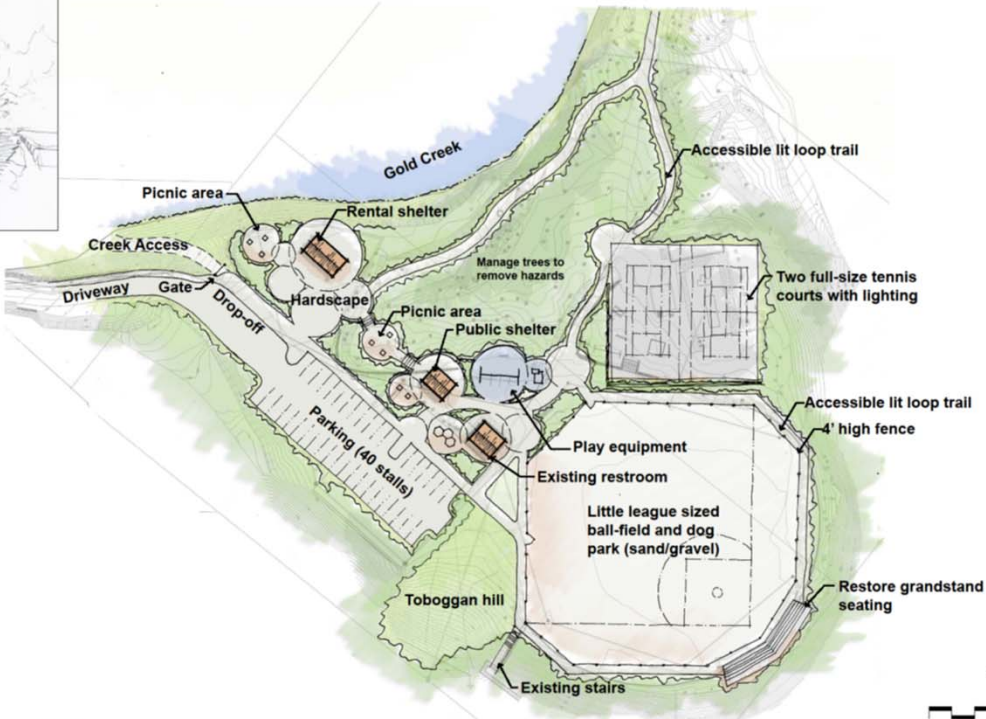
BLUEPRINT DOWNTOWN
DOWNTOWN JUNEAU'S AREA PLAN



Cope Park, Cont.



Gold Creek Rental Shelter



Cope Park Master Plan
City and Borough of Juneau

0 20 40 80FT
Juneau, AK

Corvus Design
R&M Engineering
NorthWind Architects
Begenyi Engineering

BLUEPRINT DOWNTOWN DOWNTOWN JUNEAU'S AREA PLAN



Chicken Yard Park



BLUEPRINT DOWNTOWN
DOWNTOWN JUNEAU'S AREA PLAN



Cathedral Park



BLUEPRINT DOWNTOWN
DOWNTOWN JUNEAU'S AREA PLAN



Bishop Kenny Memorial Peace Park



BLUEPRINT DOWNTOWN
DOWNTOWN JUNEAU'S AREA PLAN



Telephone Hill Park



BLUEPRINT DOWNTOWN
DOWNTOWN JUNEAU'S AREA PLAN



Marine Park



BLUEPRINT DOWNTOWN
DOWNTOWN JUNEAU'S AREA PLAN



Gunakadeit Park



Mayor Bill Overstreet Park



BLUEPRINT DOWNTOWN
DOWNTOWN JUNEAU'S AREA PLAN



Overstreet Park / Seawalk



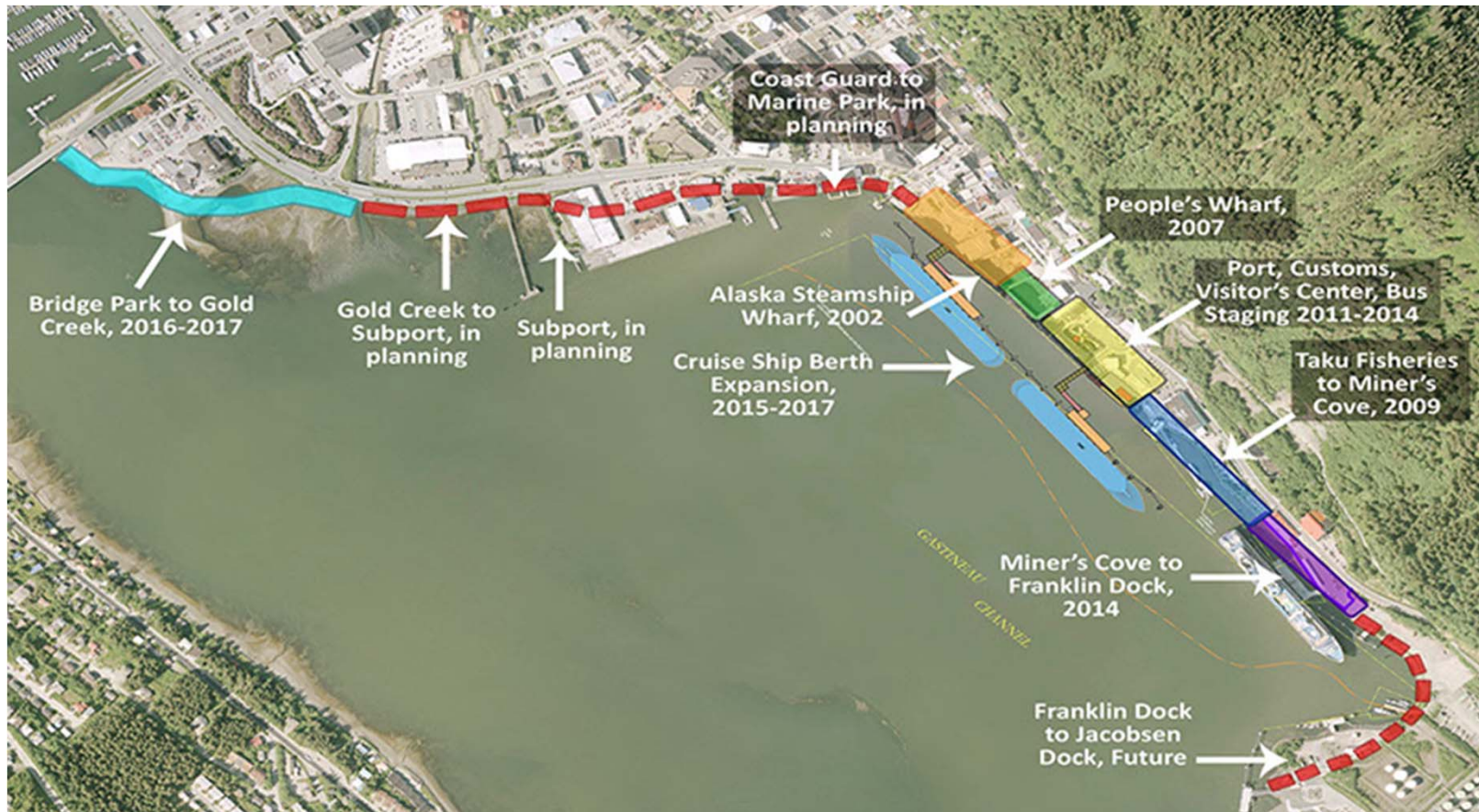
BLUEPRINT DOWNTOWN
DOWNTOWN JUNEAU'S AREA PLAN



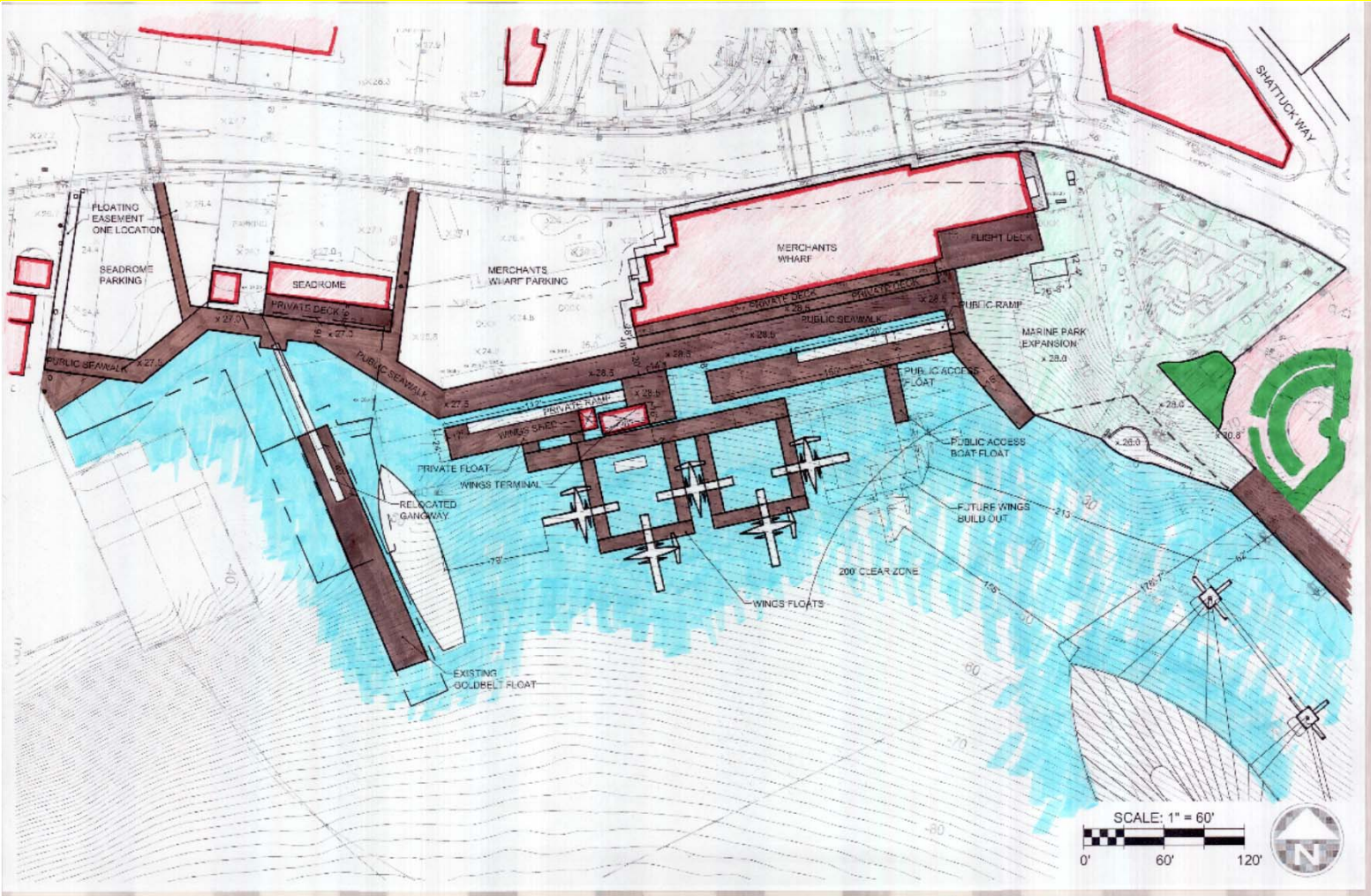
Seawalk



Seawalk, Cont.



Seawalk, Cont.



BLUEPRINT DOWNTOWN
DOWNTOWN JUNEAU'S AREA PLAN



Trails

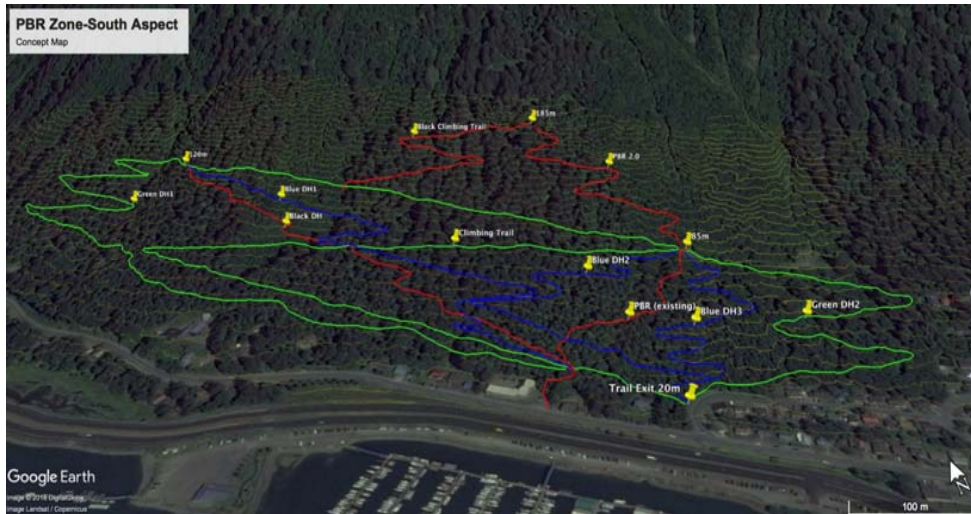
Downtown Juneau Trails



BLUEPRINT DOWNTOWN
DOWNTOWN JUNEAU'S AREA PLAN

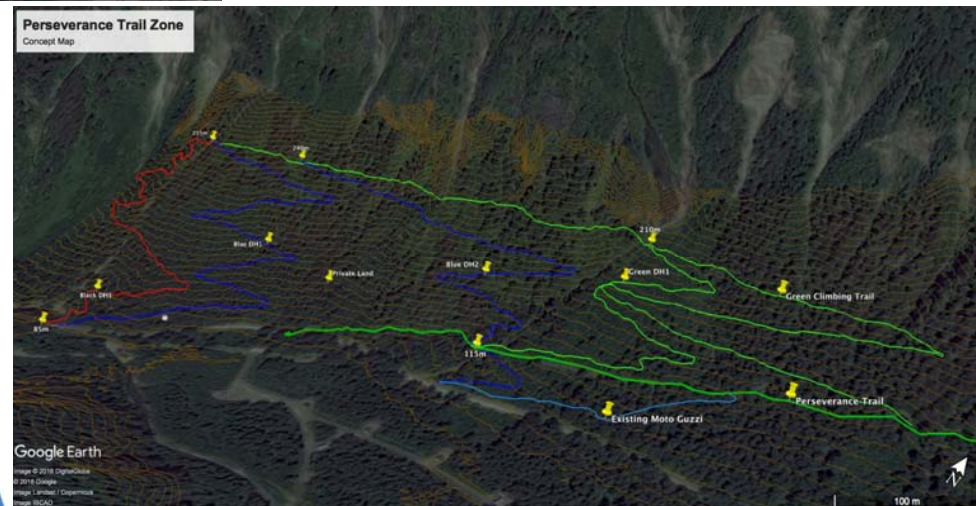


Future Proposed Trails – Gravity Logic



“PBR Zone” above Aurora Basin Harbor

“Perseverance Trail Zone” in lower Perseverance area above Basin Road



Recreational Facilities Programming

Augustus Brown Pool

- Swim lessons
- Rentals
- Seniors programming



Zach Gordon

- Drop-in
- Camps
- Events
- BAM Afterschool Program
- Youth Employment in the Parks
- Youth outreach

Harbors as Recreation Areas

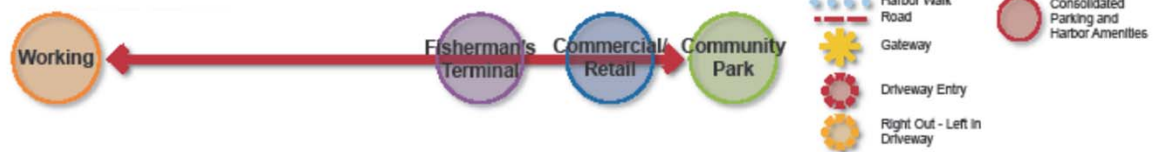


BLUEPRINT DOWNTOWN
DOWNTOWN JUNEAU'S AREA PLAN



Downtown Harbor Master Plan

Preferred Master Plan



Land Use & Strategic Planning Downtown Harbors

Conceptual Master Plan - Preferred

REV: 01/19/2017



Juneau Downtown Harbors Uplands Preferred Master Plan: Bridge Park to Norway Point

Page 2 of 66

BLUEPRINT DOWNTOWN
DOWNTOWN JUNEAU'S AREA PLAN



Goals and Actions

- Programming in parks for changing user base
- Trail improvements and leveraging CBJ funds for grants for ongoing maintenance
- Seawalk connection/completion
- Bring aging parks up to standard (Capital, Chicken Yard, Marine)
- Commercial use policies and management of parks and trails
- **WHAT ELSE?**