

ATTACHMENT #3



MEMORANDUM

TO: Patty Wahto,
JNU Airport Manager

DATE: July 2, 2019

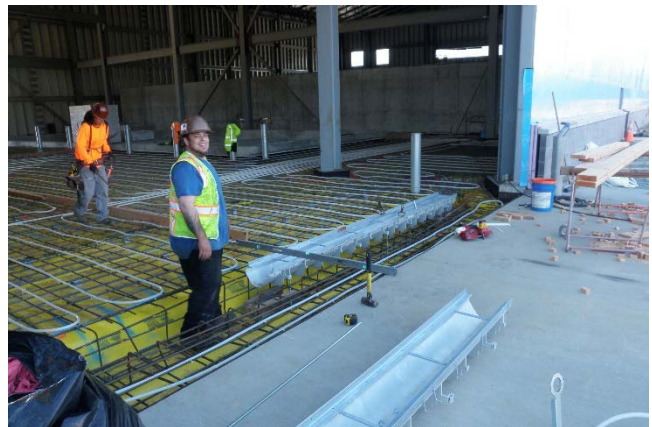
FROM: Catherine Fritz, AIA
JNU Airport Architect

RE: Architect's Report of June 2019 Activity

Sand/Chemical Building & Fueling Station. Construction activities during June included interior concrete slabs, roofing, exterior sheathing, CMU wainscot, under-slab heat piping and electrical, and preparation for paving. The construction contract has been paid to 56% completion.



Sand/Chemical Building interior concrete slabs



Under-slab heat piping.

Terminal Reconstruction. The Design Development (DD) phase of the project was completed in June and a work session to review all aspects of the design was held June 13-14, 2019. The DD phase cost estimate was received by the consultants on June 28 and is currently being reconciled. The construction costs have increased as the engineers have better understood the complexities of maintaining structural stability through the various phases of demolition and reconstruction. The phasing is essential to maintain airport operations, so the process of reconciling scope and budget it currently underway.

The bid period for the electrical construction documents began on June 18, 2019, the pre-bid conference was held on June 27th and bids are due on July 16, 2019. The estimated cost of construction is \$1.3M. Airport staff requests that the Airport Board convene in a special meeting to review bids and recommend award of this contract. The City & Borough of Juneau Assembly is scheduled to review the bids at their July 22nd meeting.

The Federal Aviation Administration's (FAA) equipment relocation project continued through June. Coordination with the terminal project's electrical engineers continued, and the FAA is prepared to coordinate their construction phase with the airport's electrical contract.

ATTACHMENT #3

The building permit for temporary offices was issued on June 25, 2019. Two small construction contracts are being developed to address the needed work in the Alaska Room and the former Dining Area. Work is expected to begin in late July. JNU's construction assistant is also working on small projects around the terminal to accommodate a new location for Alaska Airlines' Operations (currently located in the original air traffic control cab), modifications to the Aurora Room that will house Alaska Seaplanes, and modifications to the airport Badging office. The smoking shelter will be moved to a new location adjacent to the north dog park by September.

Project Closeouts. The Gate 2 Passenger Boarding Bridge and the Airfield Rescue and Fire Fighting (ARFF) Building Modifications projects are currently in closeout phase.

Other projects/issues worked on by architectural projects staff during June included:

- Punch list on Snow Removal Equipment Facility (SREF) and Wash Bay Addition continued.
- Continued work on the Disadvantaged Business Enterprise (DBE) program.