



Docks & Harbors

The Tide Line

September 2018



Docks & Harbors Meetings:

Operations/Planning
Wednesday Sept. 19th
At 5pm
CBJ Room 224

Regular Board
Thursday Sept. 27th
At 5pm
CBJ Assembly Chambers
Meeting agendas and minutes
can be found at:

<http://www.juneau.org/harbors/board.php>

Port Director's Corner

With the successful 72nd Annual Golden North Salmon Derby in our wakes, we now turn our attention to the waning days of the season and look for opportunities to continue improvements throughout the Docks & Harbors facility inventory. Each April and each September, Docks & Harbors' facilitates meetings with our heavy user groups with the goal of making "course corrections" to better serve the public. Of course, the general public is always welcome to communicate with the Port Director, Harbormaster, or Harbor staff and attend Docks & Harbors Board meetings on issues pertaining to infrastructure, regulations or policy. However, twice a year, we make a point of inviting users of Statter Harbor, the downtown transportation providers and the downtown vendor booth brokers to meetings to discuss the season ahead and the season which has passed. We try to choose days in which there are no cruise ships in port to maximize attendance.

On Wednesday, September 26th at 5:30 pm in the Auke Bay Marine Station (ABMS) Fish House, we will be conducting our post-season meeting for Statter Harbor users. Items for discussion will be operational improvements ideas, a presentation updating the Statter Harbor "For Hire Float" project, and how to best manage the newly placed ABMS 100-foot Float Extension. Interested members of the public, charter operators and the Statter boating community are highly encouraged to attend and participate. There will be signage directing attendees to the ABMS Fish House.

On Thursday, September 27th at 10 am in Assembly Chambers, we will be conducting the post-season meeting with downtown vendor booth brokers. This user group, which is permitted thorough Docks & Harbors, is very important to the tourism industry. It is our desire to work with the vendor booth brokers to promote an image which is consistent with the Juneau community.

On Thursday, September 27th at 11 am in Assembly Chambers, we will be conducting the post-season meeting with downtown transportation providers. We will present the latest update to the downtown "transportation and expanded deck-over project" to all in attendance. Docks & Harbors is currently moving to the final design of this needed infrastructure investment. The meeting will focus on improving the safety and efficacy of moving passengers out of the downtown core using many modes of transportation.

Mike Pusich Douglas Harbor: New signage has been installed above the gangways leading to the Douglas Harbor Floats which recognize the namesake of Douglas Harbor.



Go Green with Docks & Harbors! If interested in having your statement sent via email, please send an email to harbormaster@juneau.org

Help stop theft in our Harbors! If you see something, say something. Call suspicious activity to JPD Non-Emergency Line -907-586-0600 and report to the Harbor Office at 907-586-5255.

Employee Recognition: Crime averted thanks to Ashley Bruce! At the August 30th Docks & Harbors Board meeting, Administrative Assistant Ashley Bruce was recognized for thwarting a crime which she witnessed along the Seawalk. The citation read: *For sincere appreciation for confronting a would-be thief and preventing a property crime on Saturday August 18th along the Seawalk. Your unselfish and quick action prompted the culprit to drop the stolen item and you were able to return the item to the grateful owner. Without your willingness to step up, the scoundrel would have fled with the valuables. On behalf of the Docks & Harbors team, I want you to know that we really appreciate your efforts which are always exceeding expectations.*



Docks & Harbors Office Hours:

Port Office

907-586-0292

Monday – Friday
8:00am to 4:30pm

Port/Field Office

907-586-5720

Monday – Sunday
8:00am to 4:30pm
Closed 12:00 -1:00
for lunch

Aurora Office

907-586-5255

Monday – Friday
8:00am to 4:30pm

***Statter Harbor**

(Auke Bay) Office

907-789-0819

Monday – Sunday
8:00am to 4:30pm
Closed 12:00 – 1:00
for lunch

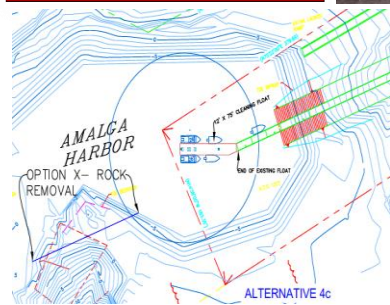
***Starting September**

15th, this office will be closed weekends.

Rotary International project. Docks & Harbors generously transferred a 65 foot gangway, which was in excess to the needs within our department to a project led by Rotary. Rotarian Kim Kiefer made the request for the 65 foot ADA ramp which was previously used along the downtown Seawalk – south of the Library. After improvements (completed in January) to the Seawalk which reduced the deck slope, this gangway was no longer necessary to comply with American Disability Act requirements. The four Juneau Rotary Clubs, Rotaract, Trail Mix and CBJ Parks & Recreation are in the process to improve a trail in the Dzantik'i Heeni Middle School/Lemon Creek area and the ramp has been placed to span a creek in the project area.



Amalga Harbor is a busy and congested launch facility at times. The approach to the float is narrow with a right angle turn and a protruding reef defining the channel into the small basin. The physical constraints imposed by the small basin, reef protrusion, and the fish cleaning activity at the end of the float congests the float hindering launch and retrieving activity. This is exacerbated at lower tides as the perceived available maneuvering basin decreases significantly and the floating length of the loading float is reduced for load/unloading of trailered vessels.



The objectives of this project are to mitigate the impact of fish cleaning on launch and retrieve activity by increasing the available space on the loading float for launch/retrieve activity, or separating the activity if possible by providing for increased fish cleaning capacity at a location with acceptable wave climate, standby maneuvering area and unobstructed water depths. We are currently engaged with ADF&G for funding opportunities.