



## Docks & Harbors

# The Tide Line



November 2015

### Port Director's Corner

Calling for a little help from the Statter Harbor patron/customer/users! I have been writing the past few months about the progress to relocate the Auke Bay Boatyard to the Auke Bay Loading Facility. In addition to providing a location which will improve the efficacy of the boatyard, it will free up needed uplands in Statter Harbor to expand the facility in a more useful fashion. Docks & Harbors will begin public process to reduce the congestion within Statter Harbor by proposing a "for hire commercial float" to be constructed seaward of the existing boatyard. The conceptual idea, currently in the Statter Harbor Master Plan, would segregate the charter boat and uplands transportation operations from the rest of the facility. As with any major infrastructure improvement project, this requires a funding source to move forward. Since the project would aim to relieve congestion in Statter Harbor, in part caused by the commercial charter boats, it is logical to propose the use of "head taxes". In order to justify expenditures derived from cruise ship passengers, Docks & Harbors must establish a relationship between providing "safe & efficient" facilities which directly benefits the cruise ship industry. In order to develop justification for the "for hire commercial float", I am asking for written public comments describing observations relating to the safety and efficiency (or lack thereof) in Statter Harbor. Please send your comments to me either by email ([Carl.Uchytel@Juneau.org](mailto:Carl.Uchytel@Juneau.org)) or via letter to the CBJ Port Director at 155 S. Seward St, Juneau, AK 99801. PND Engineers will be the consultant engaged in developing the engineering solution. We intend to begin the conceptual design process for the "for hire commercial float" before the end of this calendar year. Please email me should you wish to be notified of the scheduled meetings.

#### Harbor Fee Review

November 4<sup>th</sup> at noon  
CBJ Room 224

#### Finance Meeting

November 12<sup>th</sup> at  
5:00 p.m.  
CBJ Room 224.

#### Docks Fee Review

November 12<sup>th</sup>  
Following Finance  
CBJ Room 224

#### Operations /Planning

November Meeting  
Cancelled

#### Regular Board Meeting

November 19<sup>th</sup> at  
5:00 p.m.  
Assembly Chambers

#### Meeting agendas and minutes link:

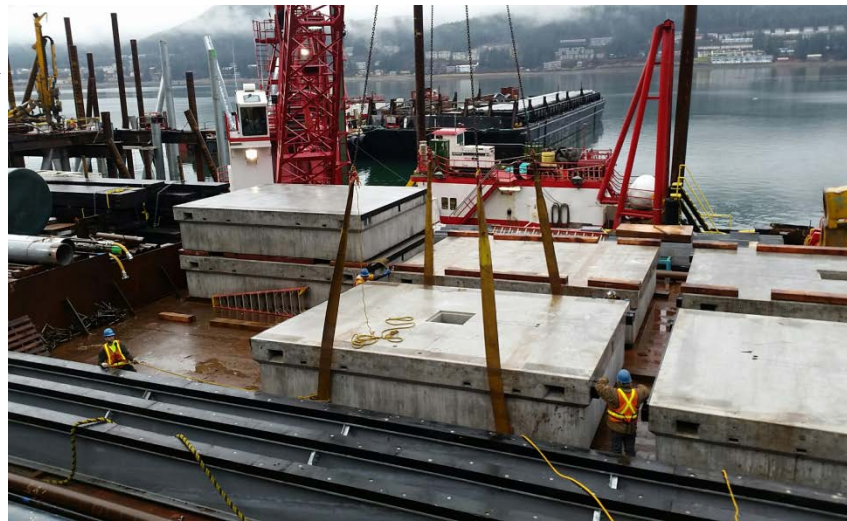
[http://www.juneau.org/  
harbors/board.php](http://www.juneau.org/harbors/board.php)

**Go Green with Docks & Harbors. If you are interested in having your statement sent via email, please send an email to [dolly.raster@juneau.org](mailto:dolly.raster@juneau.org)**

#### Cruise Ship Berth Project Construction.

Notice of Noisy Equipment Operation: From November 2nd to November 25th Manson Construction Co. will be operating derrick barges, welding machines, and generators at the Juneau Cruise Ship Berths 24 hours per day, 7 days a week. Please contact Manson Construction Co. at 907-713-8150 if you have any questions. Contact the City and Borough of Juneau Building Official at 907-586-5230 to report violations of this permit. Manson Construction thanks you for your understanding.

Photo by Erich Schaal



**Deputy Port Engineer Erich Schaal is hereby named the Alaska Association of Harbormasters and Port Administrators Employee of the Year for Juneau.** Erich was engaged in ongoing construction projects, design reviews of future projects, management of contracts requiring fiduciary oversight; and, spearheading the stand-up of an asset management system for the department.

Erich was instrumental in ensuring the \$11M Aurora Harbor Phase I project was completed on time and with minimal change orders. Diligently managing the construction needs with prospective harbor patron expectations, he aptly coordinated a smooth transition from contractor to customer on the anticipated date of completion. Concurrent with the Aurora Harbor project, he competently represents Docks & Harbors interests in the \$12M Statter Harbor Launch Ramp Facility through technical oversight, negotiations with the contractor and liaison with City and State officials.

Mr. Schaal has been tasked with executing design and construction contracts to improve the safety at many of our facilities. Working with a local welder, Erich has been prototyping a rescue ladder for fabrication for Statter and Aurora Harbors. Additionally, he has been developing viable options to mitigate the risks associated with the Statter Breakwater openings. Innovative by nature, Erich always pursues solutions enhancing the end users ability to access our facilities - such as ladders and safety improvements at the Intermediate Vessel Float, Taku Dock and Amalga Harbor fish cleaning station. Erich was uniquely qualified to lead efforts within the department to create an asset management tool to improve processes in our stewardship of Docks & Harbors physical properties. His acute reasoning skills led him to explore, research and execute a commercial software system contract which will allow Docks & Harbors to more efficiently administer maintenance and repairs.

Erich's dedicated and professional service to Docks & Harbors is commendable and worthy of being recognized by AAHPA members as Juneau Port & Harbors Employee of the Year.

**Statter Harbor Launch Ramp Update.** Miller Construction Company continues to make good progress in the construction of the launch ramp facility. MCC is currently surcharging the fifth (of six), 5 foot thick "shot rock" stage. When the entire 5 foot thick surcharge is placed, the contract calls for a 28-day "wait period" to allow for the consolidation of the soils which continues to improve the strength of the sediment. The project remains on schedule for a July 31<sup>st</sup>, 2016 completion.

**Douglas Harbor Update.** Trucano Construction has completed the demolition and the dredging contractor (Western Construction Marine) is currently conducting the bathymetric survey of the area to be dredged. It is anticipated dredging will commence around November 9<sup>th</sup> to be completed in January 2016. The design of the new float system is currently at the 95% Design Review and bid ready documents should be complete in November.

Photo by Dave Borg



**Docks & Harbors  
Office Hours:**

**Port Office Hours**

907-586-0292  
Monday – Friday  
8:00 am to 4:30 pm

**Port/Field Office  
Closed**

(for the winter)

**Aurora Office Hours**

907-586-5255  
Monday – Friday  
8:00 am to 4:30 pm

**Statter Harbor (Auke  
Bay) Office Hours**

907-789-0819  
Monday - Friday  
8:00 am to 4:30 pm  
Closed 12:00 to 1:00  
for lunch



**Day of Caring:** Teena Larson, Carl Uchytel and Jenny Mejia participated in the United Way "Day of Caring" on October 1<sup>st</sup>. This trio working along other CBJ employees, Mary Grant and Mary Johns, volunteered to work at *Helping Hands* to organize and clean the facility. *Helping Hands* is a food pantry located in Switzer Creek benefiting those in need. This is the fourth year Teena has rolled up her sleeves to assist the United Way as part of "Day of Caring".