



Docks & Harbors

The Tide Line



September 2013

Port Director's Corner

As we approach the end of the Juneau boating season, I especially want to thank the Statter Harbor patrons who made this summer successful. This season saw much change with the completion of the new "A" and "B" floats and the new designation of the loading zone. Additionally, the facility experienced great demand from commercial fisherman and luxury yachts who called on Statter Harbor. Through it all, the Docks & Harbor staff was able to make it all work. In April, Docks & Harbors conducted a pre-season meeting for harbor patrons. On September 23rd, at 5 pm at the Valley Library, we will hold a post-season meeting to receive public input to management improvements for the 2014 boating season. This summer also marked a milestone by securing the CBJ Planning Commission "conditional use" permit for the Statter Harbor Launch Ramp. Thanks to the many harbor patrons who showed up to testify and write correspondence of support for the project. Docks & Harbors has negotiated the engineering design efforts for the launch ramp plans and specifications to move forward. We anticipate that design completion will be in May 2014 and that construction start will be August 2014 with substantial completion summer 2016. The engineering design team will schedule the first launch ramp public meeting in October. Docks & Harbors is in the process to finalize the "compensatory mitigation fee-in-lieu" negotiations with the Southeast Alaska Land Trust which is required under the terms of the US Army Corps of Engineers permit. This compensatory mitigation will not jeopardize the project moving forward.

Auke Bay Loading Facility Haul-Out. Docks & Harbors has procured the necessary wash down apparatus and collection device to be compliant with ADEC regulations. As such, the Auke Bay Harbor Staff is now posed to haul out vessels and provide long term boat or gear storage at the Auke Bay Loading Facility. Please contact Auke Bay Harbor Operations & Maintenance Supervisor Doug Unruh at 789-0819 for more information.

Aurora Harbor Design. Docks & Harbors continues to refine the Phase I of the Aurora Harbor rebuild project. The \$11M Phase I project would replace "A, B, C, D" main floats, head float and access ramp. After four public meetings, including written public input, the Docks & Harbors Board elected at its August 29th meeting to keep the existing number of moorage slips. However, the new project will widen most of the finger floats and will reconfigure for 48 foot and 110 foot slips. Design options which were contemplated included fewer, but wider slips to accommodate vessels with increased beam. We anticipate the final design review to be complete in January with construction to begin in Fall 2014 and completion in May 2015.

ADA Harbor Evaluation. Docks & Harbors has contracted with local firm, Northwind Architects to conduct an American Disability Act review of our harbor facilities. Our plan is to begin with Statter Harbor in the month of September and will look at moorage, parking and reasonable accommodations for our harbor patrons who require it. Any member of the public wishing to comment on the facilities at Statter Harbor can email the Port Director at carl_uchytil@ci.juneau.ak.us.

Commercial Fisheries. Docks & Harbors has been provided the opportunity to purchase the "net float" which is currently sited near the Auke Bay Loading Facility. The existing "memorandum of agreement" with the owner of the barge will expire shortly. The Port Director is interested in any public input to help determine whether Docks & Harbors should expend funds to secure this commercial fisheries infrastructure as a permanent net float. The Port Director can be contacted at carl_uchytil@ci.juneau.ak.us

Douglas Harbor Parking Lot. Docks & Harbors is negotiating with the State of Alaska to provide 40 parking spaces to state employees at the Douglas Harbor Parking Lot. Census data collected over 30 days, including over Derby weekend, suggests that there exist sufficient capacity to enter into an annual lease agreement with the State of Alaska. If you have any concerns please contact the Port Director.

Docks and Harbors Meeting:

Operations/CIP Meeting

September 19th at
5:00 p.m. In the Assembly
Chambers

Statter Harbor Post-Season Improvement Meeting

September 23rd at 5:00 pm at
the Valley Library

Finance Meeting

September 24th at
5:00 p.m. In CBJ Room 224.

Regular Board Meeting

September 26th at
5:30 p.m. In the Assembly
Chambers.

Meeting agendas and minutes
can be found at:

[http://www.juneau.org/harbors/
board.php](http://www.juneau.org/harbors/board.php)



Don't FORGET!

Reminders

You can now purchase your DAILY launch ramp permit at Statter Harbor in the APARC system.

Buoy Markings

Shellfish pot buoys must be marked with:

- Angler's first initial and last name
- Home Address
- DMV-issued AK vessel numbers or the vessel name.

For Maritime Emergencies

Contact the U.S. Coast Guard
By VHS radio CH16 or call
*CG from your Alaska
registered
Cellular telephone.



Docks & Harbors' Employee of the Quarter. Mr. Gary Gillette, the Port Engineer at the Port Office, was recognized at the August Board Meeting as the recipient of the Docks & Harbors' Employee of the Quarter from April -June. During this period, Gary was engaged in ongoing construction projects, design reviews of future projects, management of contracts requiring fiduciary oversight; and, spearheading the approval of a critical conditional use permit. His dedicated and professional service to Docks & Harbors is commendable and worthy of recognition. Gary received a plaque, a cash reward and many thanks for his efforts.

Cruise Ship Staging Area - Phase II. Miller Construction of Juneau has been awarded a \$3M construction project to reconfiguring the parking lots adjacent to the Cruise Terminal Berth (near the Tram). This project is designed to improve the safety and efficiency of the coach, bus and privately owned vehicles along the Docks & Harbors managed properties downtown. In order to give the contractor Miller Construction enough time to complete this work the area will be phased for demolition as follows:

- September 19th, 2013 the area in front of the Tram Building will be turned over to the contractor (see map area in red). Vendor booths will be relocated onto the seawalk.
- September 26th, 2013 the area in front of the Visitor's Center will be turned over to the contractor (see map area in blue).
- October 1st, 2013 the area in front of the Taku Fisheries Building will be turned over to the contractor (see map area in yellow).
- After Oct 1st, 2013 the entire area will be under control of the contractor to perform the work
- Work is scheduled to be substantially complete by May 2, 2014.

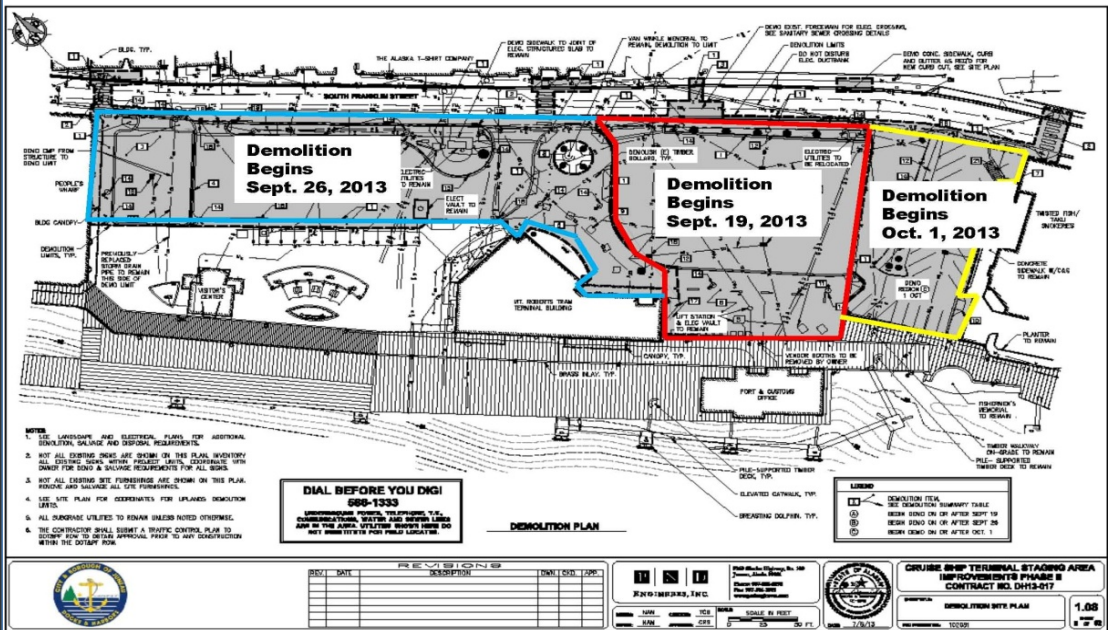
The time period to complete this work is very tight and we thank you in advance for your cooperation to not interfere with the contractor on the site. If you have any questions or need clarification of the information provided here please contact Gary Gillette at gary_gillette@ci.juneau.ak.us

Port Office Hours
Monday - Friday
8:00 am to 4:30 pm
Closed 12:00 to 1:00
586-0292

Port/Field Office Hours
For September
Monday & Friday
8:00 am to 5:30 pm
Closed 11:30 to 1:30
(Tuesday & Thursday Closed)
Wednesday, Saturday & Sunday
8:00 am to 4:30 pm
Closed 12:00 to 1:00
586-5720

Aurora Office Hours
Sunday- Saturday
8:00 am to 4:30 pm
[Closed Saturday & Sunday noon to 1:00]
586-5255

Statter Harbor (Auke Bay) Summer Office Hours
Sunday- Saturday
8:00 am to 4:30 pm
[Closed Saturday & Sunday noon to 1:00]
789-0819



National Weather Service Change- Beginning October 1st, 2013 there will be changes to the marine forecast zones in the Bering Sea and Gulf of Alaska. The purpose of these changes are to improve the forecast by creating smaller forecast areas. A map of the current and proposed zones can be found at: <http://pafc.arh.noaa.gov/newmarinezones/> Shapefiles for use within GIS are located at: <http://www.nws.noaa.gov/geodata/catalog/wsom/html/marinezones.htm> NOAA's official change notice is located at: http://www.nws.noaa.gov/om/notification/scn13-36alaska_marine_zones.htm Anyone with questions or comments can contact James Nelson at pafc-marine.feedback@noaa.gov

Boating Under the Influence (BUI) (46 USC 2302 (c)/33 CFR 95)

Operating a vessel while intoxicated is dangerous and a federal offense. If an operator of a recreational boat has a blood alcohol content of .08 (.10 in some states) or greater, the operator is subject to a civil penalty not to exceed \$1,000, a criminal penalty not to exceed \$5,000, or a one-year imprisonment, or both. Intoxicated operators who are cited by the Coast Guard may also be cited by other state or local law enforcement officials. State criminal penalties may vary and could include arrest, fines, and/or loss of motor vehicle driving privileges.