

Blueprint Downtown Steering Committee – Kick Off Meeting

**CDD Large Conference Room
December 12, 2018**





BLUEPRINT DOWNTOWN

DOWNTOWN JUNEAU'S AREA PLAN



1. Welcome and Introductions
2. Duties of the Steering Committee
3. Quick Project Overview
4. Next Steps
 1. Steering Committee Meetings – Set Regular Dates
 2. Appoint Chair and Vice Chair
 3. Planning Presentation – What is Planning?
 4. The Plan Process So Far – Consultants to Present
5. Public Participation

The Blueprint Downtown Steering Committee Members

Betsy Brenneman

Kirby Day

Daniel Glidmann

Michael Heumann

Wayne Jensen

Laura Martinson

Lily Otsea

Karena Perry

Jill Ramiel

Meilani Schijvens

Patty Ware

Ricardo Worl

Christine Woll

Nathaniel Dye, Planning Commission Liaison

Staff:

Laura Boyce, AICP, Senior Planner

Tim Felstead, Planner II

Beth McKibben, AICP, Senior Planner

CDD Director: Jill Maclean, AICP

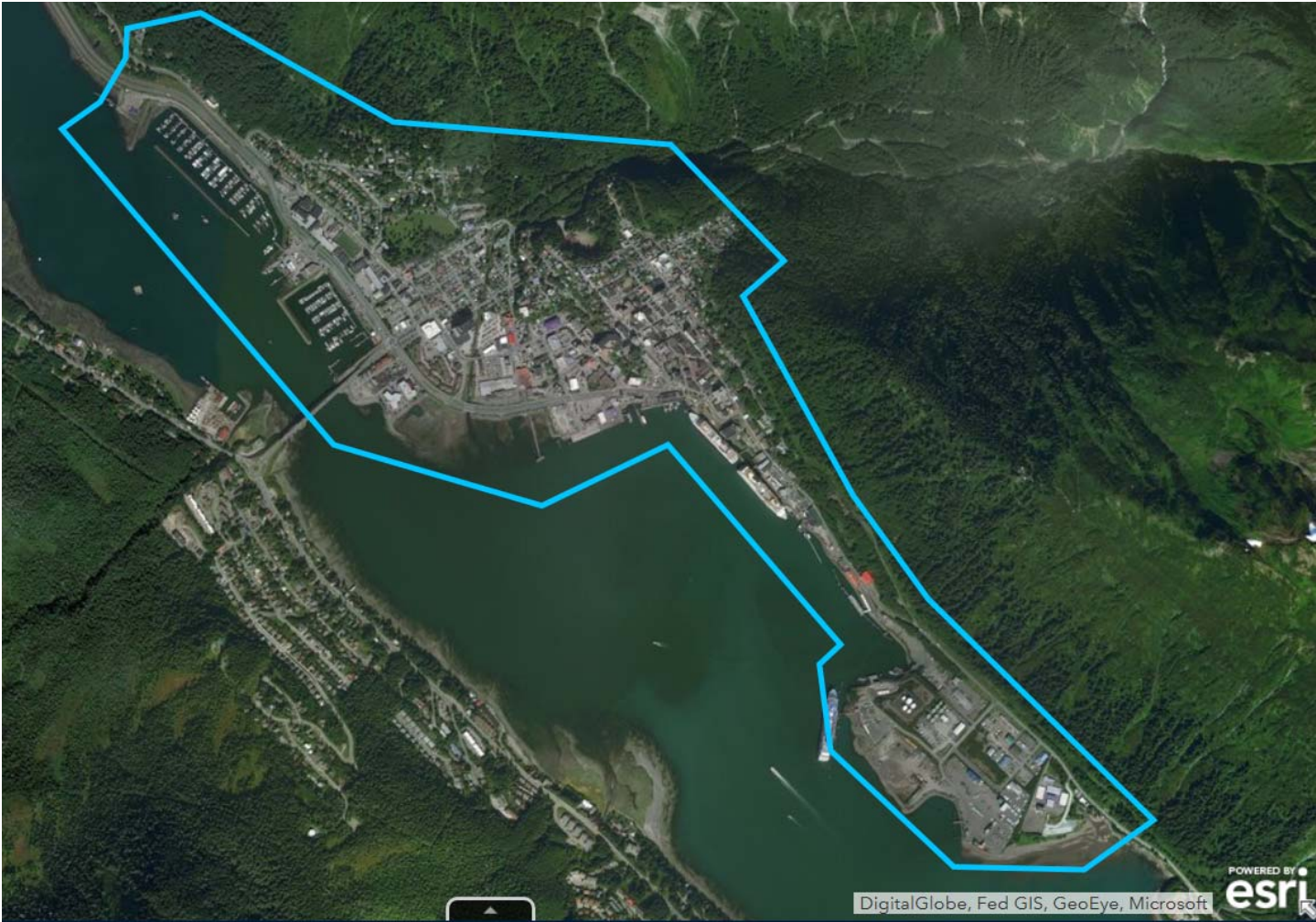
Consultants:

MRV Architects

Sheinberg & Associates

Lucid Reverie

Downtown Boundary



BLUEPRINT DOWNTOWN
DOWNTOWN JUNEAU'S AREA PLAN



Overall approach

- 20 year Planning Horizon
- Public Visioning
- Review previous plans
- Find the overlaps and gaps
- Restate, revise and add to recommendations of the previous plans
- Identify capital projects, zoning and land use map revisions, etc.
- Plan adoption

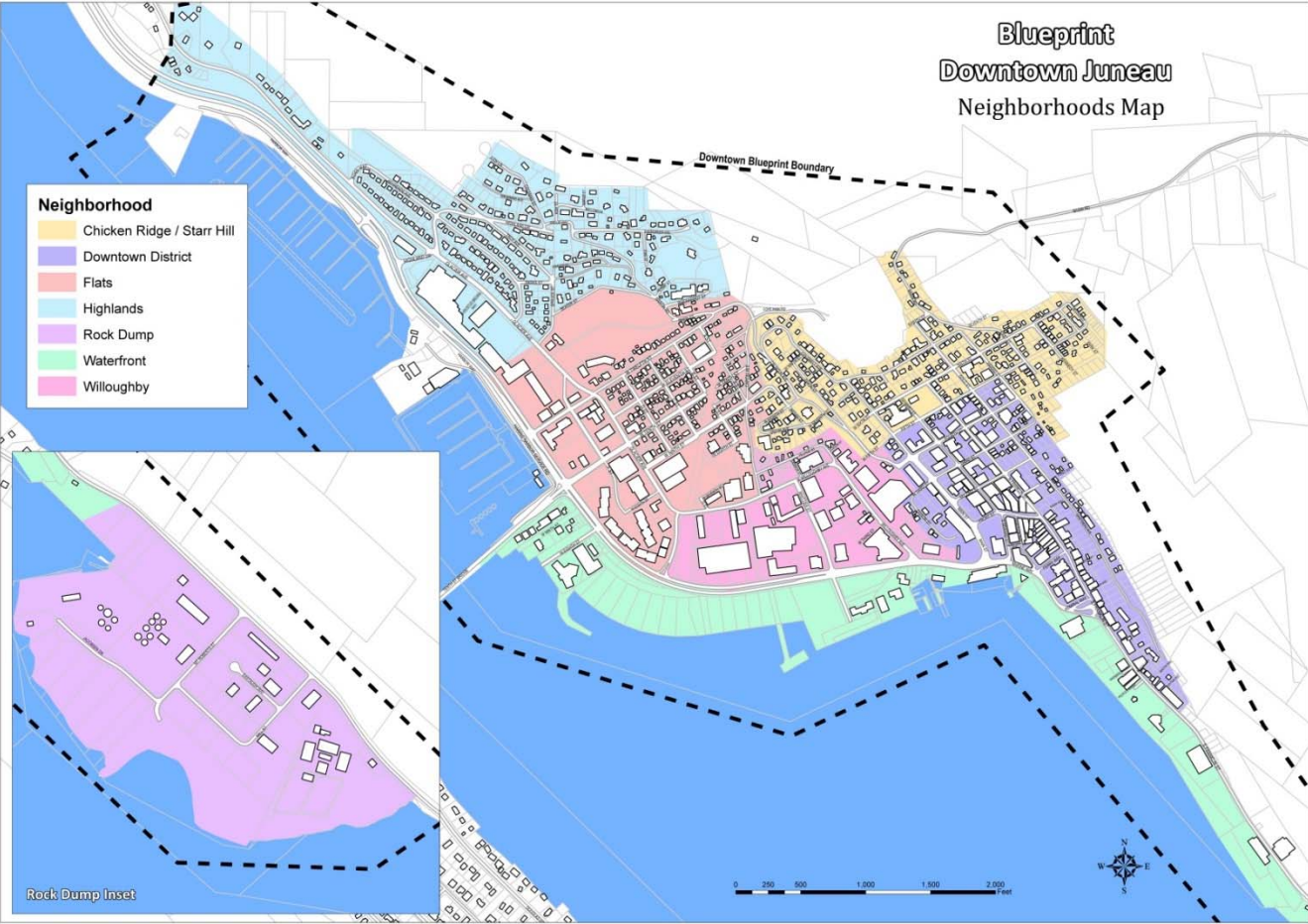
Other Downtown Area Plans and Studies

Draft Parks & Recreation Comprehensive Plan	2012 Willoughby Plan
Draft Historic Preservation Plan	2011 Juneau Climate action and Implementation Plan
2018 Tourism Best Management Practices	2010 Downtown Parking Management
2017 Housing Action Plan	2009 Downtown Historic District Design Standards and Guidelines
2016 Main street	2008 Capital Transit Plan
2016 CBJ Land Management Plan	2003 Support Vicinity Revitalization Plan
2015 Front & Franklin Project	2003 Downtown Tourism Transportation Plan
2015 Economic Development Plan	2002 Long Range Tourism Management Plan
2015 Coordinated Human Services Transportation Plan	2001 Area-wide Transportation Plan
2014 Capital Transit Development Plan	1997 Capital City Vision 20/20
2013 Comprehensive Plan	1994 Last Chance Basin Management Plan

Emerging Themes

- Traffic, Transit, and Parking
- Business Vitality and Wellbeing
- Residential Neighborhoods
- Bicycles and Pedestrians
- Design/Identity/Culture/Placemaking
- Family Friendly, Recreation, Open Space
- Downtown Housing
- Carrying Capacity and Seasonal Visitation

Where is 'Downtown'?



BLUEPRINT DOWNTOWN
DOWNTOWN JUNEAU'S AREA PLAN



Ground Rules

- ✓ **Dignify others**
- ✓ **Be open and honest**
- ✓ **Everyone participates**
- ✓ **All perspectives are of value**
- ✓ **One conversation at a time**
- ✓ **Focus on ideas and issues, not individuals and behaviors**
- ✓ **Seek to understand and then to be understood**
- ✓ **Other?**

Building Consensus

Consensus means everyone agrees, right?

NO, it means....

- I had the opportunity to share my opinions**
- I agree that the decision was arrived at fairly and openly**
- I will support the decision (even if it is not my preferred choice)**

Upcoming Events

- Walking Tours
 - Business Vitality, Housing, and Public Safety – Jan. 5
 - Vehicles, Parking, and Pedestrian Experience – Jan. 12
 - Cultural Identity, Sustainability, and Environment – Jan. 19
- Third and Final Visioning Public Meeting
 - January 24th, 6:30 – 8:30 p.m., Centennial Hall
- Final Report from Consultants
 - February (estimated)