

# LEMON CREEK AREA PLAN

**Steering Committee Meeting**

November 3, 2016

- I. Introductions**
- II. Ground Rules**
- III. Confirm the Area Plan Boundaries**
- IV. Discuss Draft Vision Statement**
- V. Historic Resources & Community Character Chapter - DRAFT**
- VI. Public Participation**
- VII. Review Order of Upcoming Chapters, Workshops & Dates**
- VIII. Adjournment**

## STEERING COMMITTEE MEMBERS:

Stephen Johnson, Chair

Michael Lukshin, Vice-Chair

Paul Voelckers, Planning Commission Liaison

Wayne Coogan

Susan Erben

Mark Pusich

Tom Chard

Dave Hanna

Patrick Quigley

Sandra Coon

Daniel Collison

Michael Short

Sam Dapcevich

- ✓ **Dignify others**
- ✓ **Be open and honest**
- ✓ **Everyone participates**
- ✓ **All perspectives are of value**
- ✓ **One conversation at a time**
- ✓ **Focus on ideas and issues, not individuals and behaviors**
- ✓ **Seek to understand and then to be understood**
- ✓ **Other?**

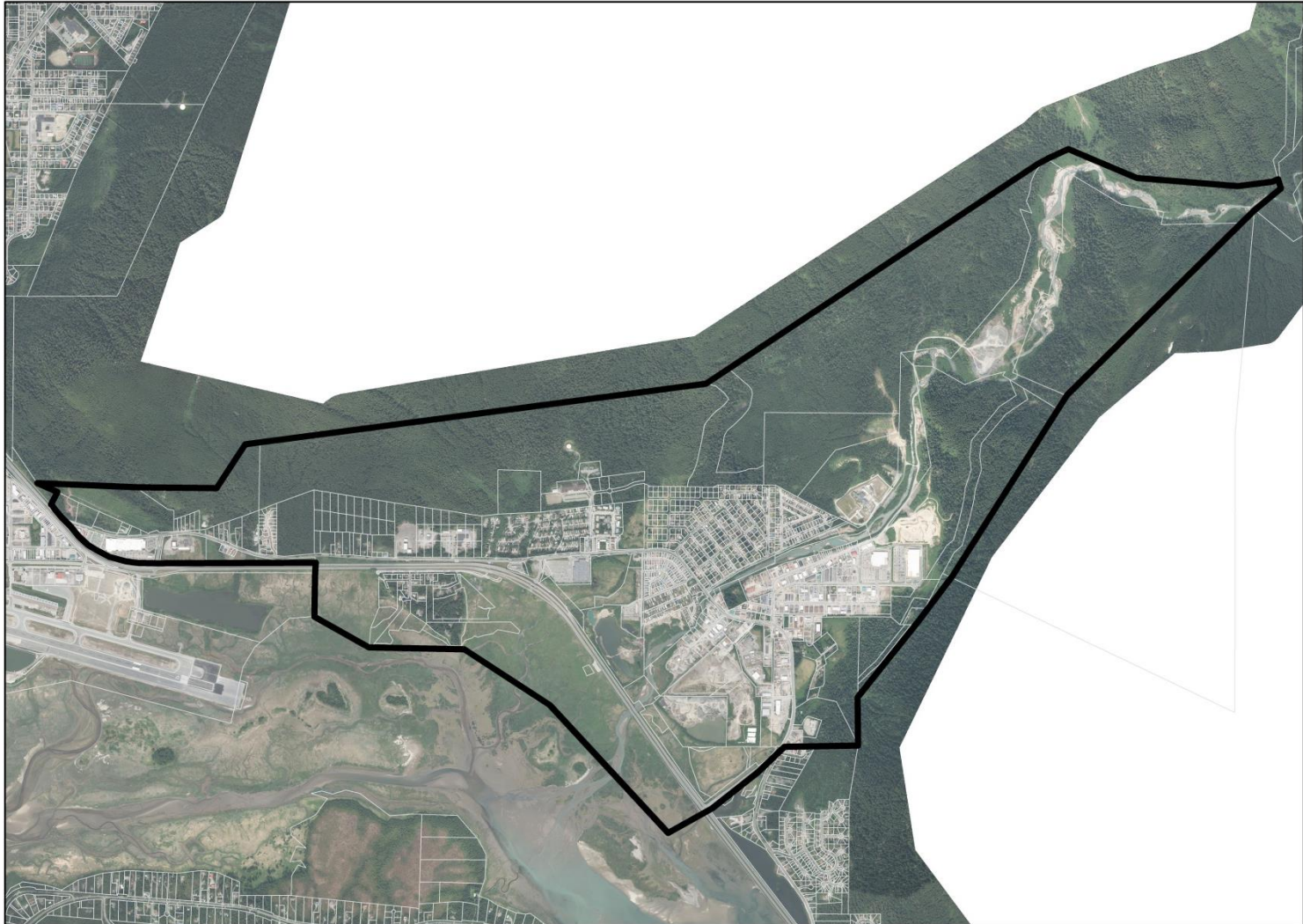
**Consensus means everyone agrees, right?**

**NO, it means....**

- I had the opportunity to share my opinions**
- I agree that the decision was arrived at fairly and openly**
- I will support the decision (even if it is not my preferred choice)**

**Parking Lot...**

# Draft Boundaries



PROPOSED LEMON CREEK PLAN BOUNDARY

0 0.5 1 Miles



# Vision Statement

**Lemon Creek is Juneau’s “*mid-town*”—a safe, welcoming, walkable, and bike-friendly community that serves as the retail hub for the borough. Lemon Creek is a community that fosters complementary development with quality housing, safe neighborhoods, and a broad range of commercial and industrial uses. Lemon Creek is an active and involved community with a citizenry that strengthens its livability, preserves its natural and recreational resources, and celebrates its heritage—maintaining a vibrant environment for future generations.**

**OR**

**We envision a Lemon Creek that preserves its natural and cultural resources, and celebrates its heritage. We pursue a community that fosters complementary development—a “Mid-Town” where shops, services, dining and living opportunities attract locals and visitors to live, work, play, and learn. We seek a safe, welcoming, walkable and bike-friendly community with great connectivity to the rest of the borough. We strive to create a sense of community spirit and cohesion that will be cultivated and promoted. We call for active community participation and leadership to strengthen Lemon Creek’s livability and maintain its stable neighborhoods for future generations.**



## Goal 1: Heighten Lemon Creek's Form and Identity

**Objective:** A stronger, more defined identity, shaped by well-kept neighborhoods, distinctive work places, attractive multi-modal transportation corridors, high-quality public spaces, and the scenic natural backdrop of Lemon Creek's mountains and shoreline.

**Action:** Ensure that land use decisions and transportation projects do not divide neighborhoods or create unnecessary barriers within established neighborhoods.

**Action:** Pursue and foster projects that “knit” Lemon Creek together such as greenways, pedestrian bridges over Lemon Creek, and the creation of public park.

**Action:** Reinforce a “sense of place” and history by developing “gateways”, interpretive signage, and other landmarks.

## Goal 2: Recognize Lemon Creek's Cultural Diversity

**Objective:** Recognize Lemon Creek's historical and cultural diversity as an asset that may be expressed through its community design and public art. Lemon Creek has an opportunity to strengthen its identity by creating new or reinvented places that celebrate its Native Alaskan, farming, and mining heritage.

**Action:** Encourage the demonstration of cultural diversity in the built environment by ensuring that public facilities incorporate design elements reflective of the history of Lemon Creek, i.e. Dzantik'i Heeni Middle School.

**Action:** Promote public art in both public and private developments by encouraging developments to incorporate artwork, such as sculpture, fountains, murals, or other visual displays, into their projects.

## **Goal 3: Protect Lemon Creek's Historical and Cultural Remains and Resources**

**Objective: Collaborate with representatives of local Native Alaskan and other historical/cultural organizations to ensure the protection of Lemon Creek's historical and cultural resources.**

**Action: Coordinate with representatives of local Native Alaskan to follow appropriate mitigation, preservation, and recovery measures in the event such resources could be impacted by development.**

**Action: Seek opportunities to undertake a historical survey of Lemon Creek in order to develop and maintain a more extensive inventory of historical structures and resources.**

**Action: Develop opportunities for interpretive signage or other landmarks to celebrate Lemon Creek's historical and cultural heritage.**

## Thursdays at 6pm:

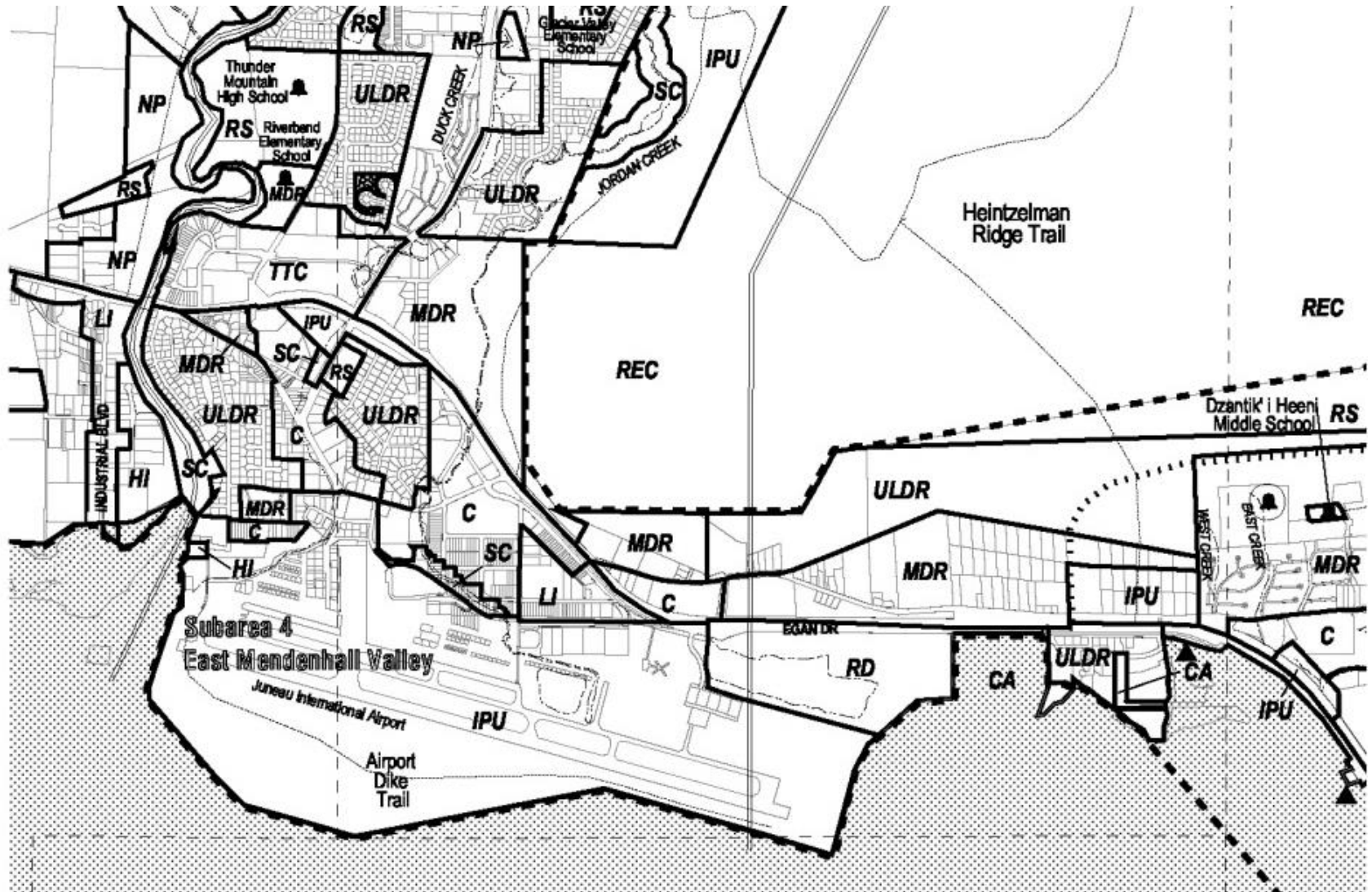
### ***TENTATIVE***

<b>December 1, 2016</b>	<b>Land Use</b>
<b>December 15, 2016</b>	<b>Land Use...Neighborhoods &amp; Housing</b>
<b>January 12, 2017</b>	<b>Neighborhoods &amp; Housing</b>
<b>January 26, 2017</b>	<b>Transportation</b>
<b>February 23, 2017</b>	<b>Economic Development</b>
<b>March 16, 2017</b>	<b>Natural Res./Recreation</b>

**Thursday, December 1, 2016 at 6pm**  
**Gruening Park Rec Hall**

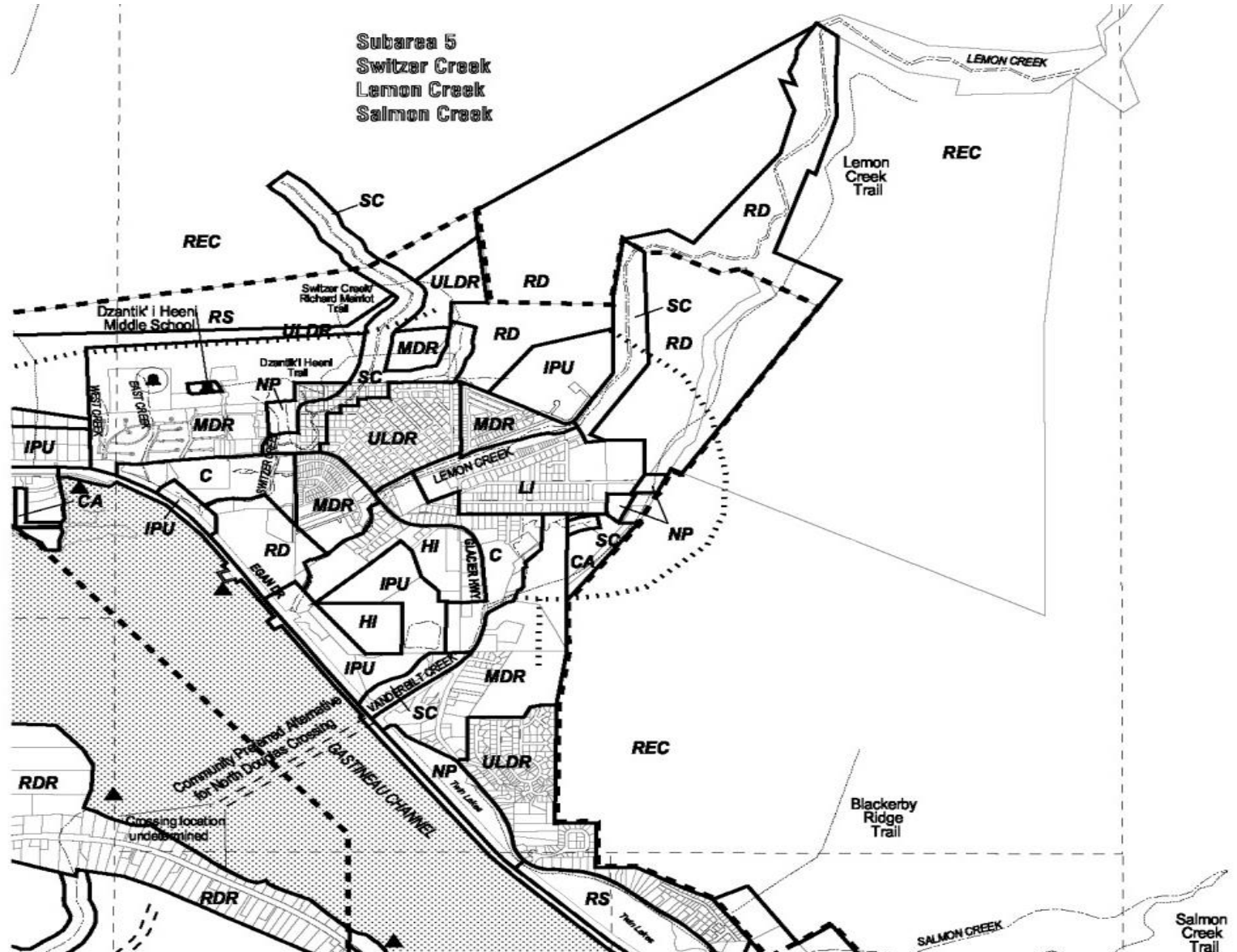
# Comp Plan & Land Use

Map G



# Comp Plan & Land Use

Map H



# Lemon Creek Zoning

