

LEMON CREEK AREA PLAN

Steering Committee Meeting

February 23, 2017

- Roll Call (6:00pm)
- Approval of Minutes (5 minutes)
 - December 15, 2016
 - January 12, 2017
 - January 26, 2017
- Review of the Public Design Workshop (30 minutes)
- Discuss Transportation & Infrastructure Chapter, Goals and Actions
 - Discuss the chapter narrative (30 minutes)
 - Discuss the goals and actions (30 minutes)
- Public Participation (15 minutes)
- Review Order of Upcoming Chapters (3 minutes)
- Adjournment

STEERING COMMITTEE MEMBERS:

Stephen Johnson, Chair

Michael Lukshin, Vice-Chair

Paul Voelckers, Planning Commission Liaison

Tom Chard

Daniel Collison

Wayne Coogan

Sandra Coon

Susan Erben

Dave Hanna

Mark Pusich

Patrick Quigley

Michael Short

- ✓ **Dignify others**
- ✓ **Be open and honest**
- ✓ **Everyone participates**
- ✓ **All perspectives are of value**
- ✓ **One conversation at a time**
- ✓ **Focus on ideas and issues, not individuals and behaviors**
- ✓ **Seek to understand and then to be understood**
- ✓ **Other?**

Consensus means everyone agrees, right?

NO, it means....

- I had the opportunity to share my opinions**
- I agree that the decision was arrived at fairly and openly**
- I will support the decision (even if it is not my preferred choice)**

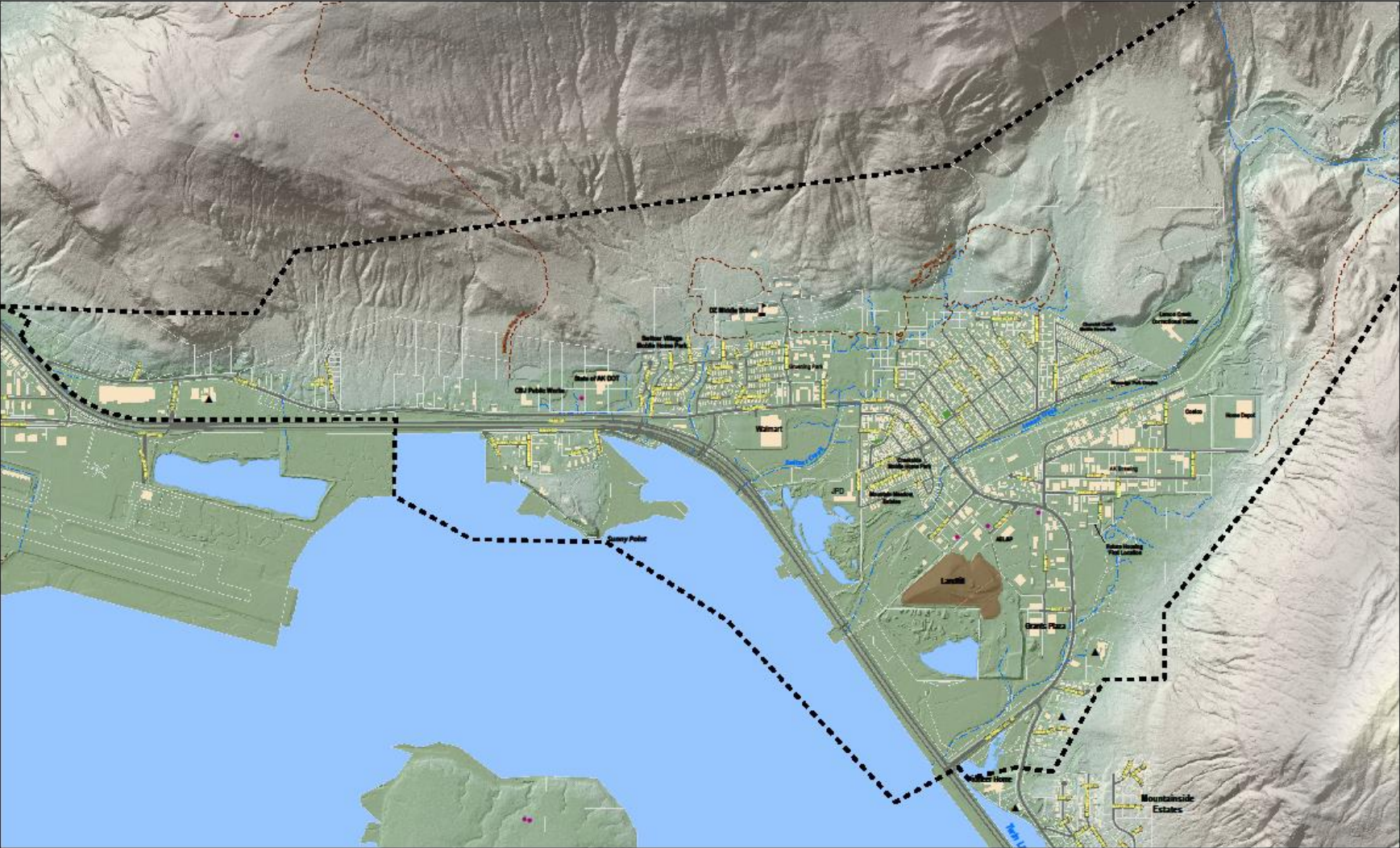
Parking Lot...

Vision Statement

The Lemon Creek Area Plan strives to encourage future development that will protect its cultural and natural resources, provide for quality housing, walkable, bikeable, safe neighborhoods, while sustaining its position as an attractive area for local businesses—Juneau’s Midtown.

The community of Juneau will use the plan to pursue ongoing solutions to enhance the livability and functionality of the area, while preserving, promoting, and enhancing positive features and economic growth for future generations.

Draft Boundaries



0 500 1,000 2,000 3,000 4,000 Feet



- ▲ Church
- Communication tower
- ⚡ School

- Trail
- Building
- Park

- Parcel
- Anadromous stream

- ⎓ Proposed plan boundary

GOAL 2: DEVELOP A SEPARATED/DEDICATED BIKE PATH (REFER TO APPENDIX X)

Action: Investigate grant or funding source to complete analysis of impacts on wetlands

Action: Identify potential routes and parcels necessary to construct the path(s)

Action: Collaborate with private property owners to develop easements as necessary to construct the path(s)

Goal 3: PROMOTE SAFE PEDESTRIAN, BICYCLE, AND TRANSPORTATION CONNECTIONS (REFER TO APPENDIX X)

Action: Enhance pedestrian/recreational connection through the wetlands, connecting the residential neighborhoods to Dzantik'i Heeni Middle School

Action: Advocate for DOT&PF's plan for Glacier Highway's pedestrian and bicycle improvements in the Lemon Creek Area

Action: Advocate for intersection signaling improvement at Davis Street and Glacier Highway

Goal 4: REDUCE THE IMPACTS OF INDUSTRIAL AND COMMERCIAL USES

Action: Fund an industrial/commercial traffic impact study

Action: Reduce impacts of dust by enforcing the application of dust control methods on industrial and commercial lots

Action: Reduce impacts of dust on surrounding uses, bicyclists, and pedestrians by requiring and enforcing dust control methods on industrial and commercial vehicles

Goal 5: REDUCE THE IMPACTS OF TRANSPORTATION/INFRASTRUCTURE FOR THOSE LIVING AND WORKING IN THE LEMON CREEK AREA

Action: Fund an industrial/commercial traffic impact study

Action: Control dust by requiring industrial/commercial lots to apply dust control plans and/or improve lots with pavement

Action: Control dust by requiring industrial/commercial vehicles to apply dust control plans

Action: Advocate for funding to convert CBJ public transit vehicles to energy efficient models (reference - Energy Plan)

Action: Advocate for vehicle emission standards similar to those in California (reference - Energy Plan)

Goal 1: ANALYSIS OF LEMON FLATS SECOND ACCESS ROAD

Action: Support the recommendations as stated in Appendix XX, Memo RE: Lemon Flats Second Access Reconnaissance Report October 16, 2007

Upcoming Meetings

Thursdays at 6pm:

March 16, 2017

Neighborhoods & Housing

March 30, 2107

Economic Development

April 6, 2017

Economic Development

April 20, 2017

Natural Resources & Recreation

April 27, 2017

Natural Resources & Recreation

May 11, 2017

Draft Plan

Second Access Potential Routes

Scoping Summary Report
Lemon Flats Second Access

Juneau, Alaska
W.O. D39662

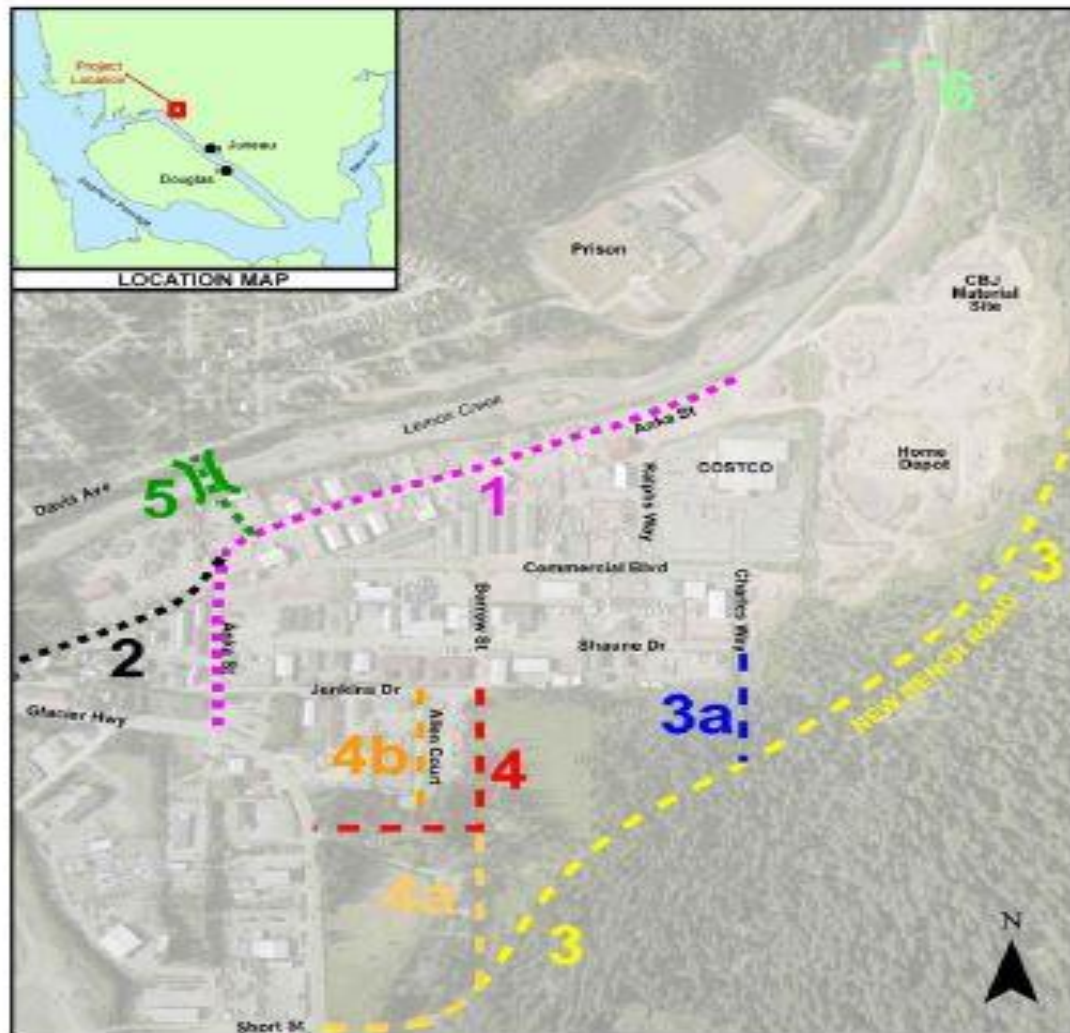
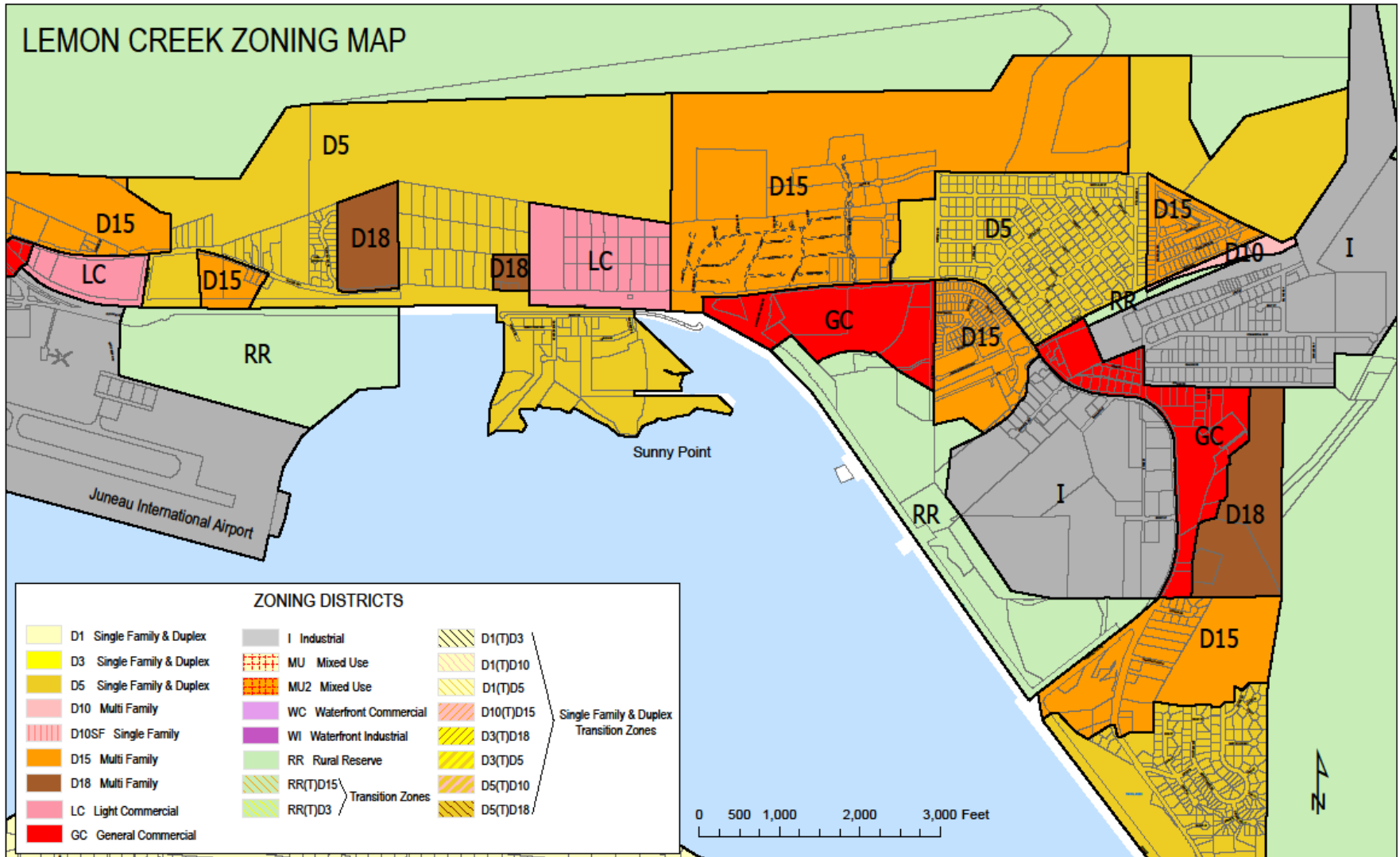


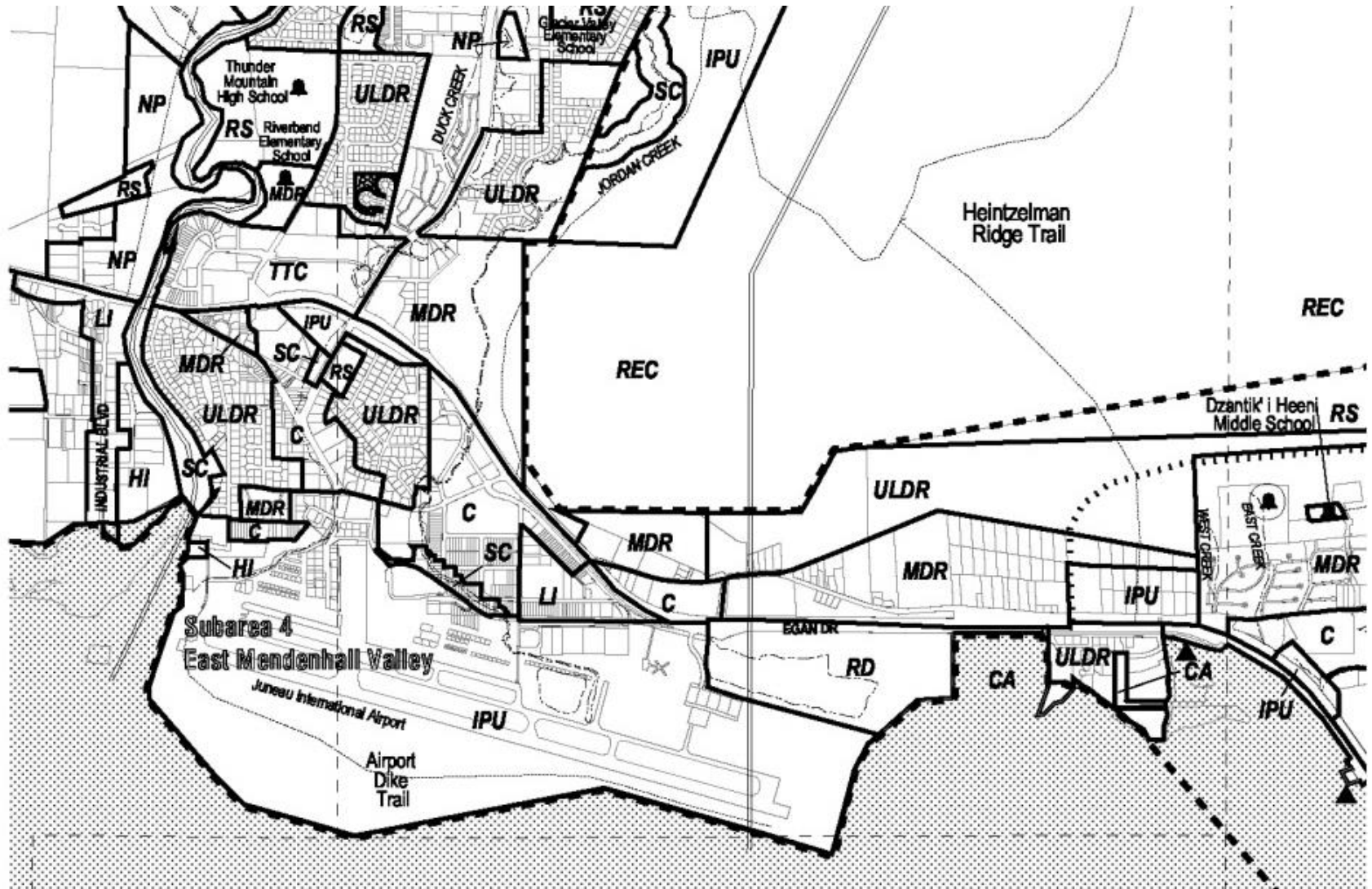
Figure 1: Project Location Map and Options

Zoning Map



Comp Plan & Land Use

Map G



Comp Plan & Land Use

Map H

