

LEMON CREEK AREA PLAN

Steering Committee Meeting

January 26, 2017

- **Roll Call (6:00pm)**
- **Ground Rules (2 minutes)**
- **Approval of Minutes (December 15, 2016 & January 12, 2017)**
- **Transportation & Infrastructure Chapter**
 - **Discuss the chapter (45 minutes)**
 - **Discuss the goals and actions (45 minutes)**
- **Public Participation (15 minutes)**
- **Review Order of Upcoming Chapters, Workshop & Date (3 minutes)**
- **Adjournment**

STEERING COMMITTEE MEMBERS:

Stephen Johnson, Chair

Michael Lukshin, Vice-Chair

Paul Voelckers, Planning Commission Liaison

Tom Chard

Daniel Collison

Wayne Coogan

Sandra Coon

Susan Erben

Dave Hanna

Mark Pusich

Patrick Quigley

Michael Short

- ✓ **Dignify others**
- ✓ **Be open and honest**
- ✓ **Everyone participates**
- ✓ **All perspectives are of value**
- ✓ **One conversation at a time**
- ✓ **Focus on ideas and issues, not individuals and behaviors**
- ✓ **Seek to understand and then to be understood**
- ✓ **Other?**

Consensus means everyone agrees, right?

NO, it means....

- I had the opportunity to share my opinions**
- I agree that the decision was arrived at fairly and openly**
- I will support the decision (even if it is not my preferred choice)**

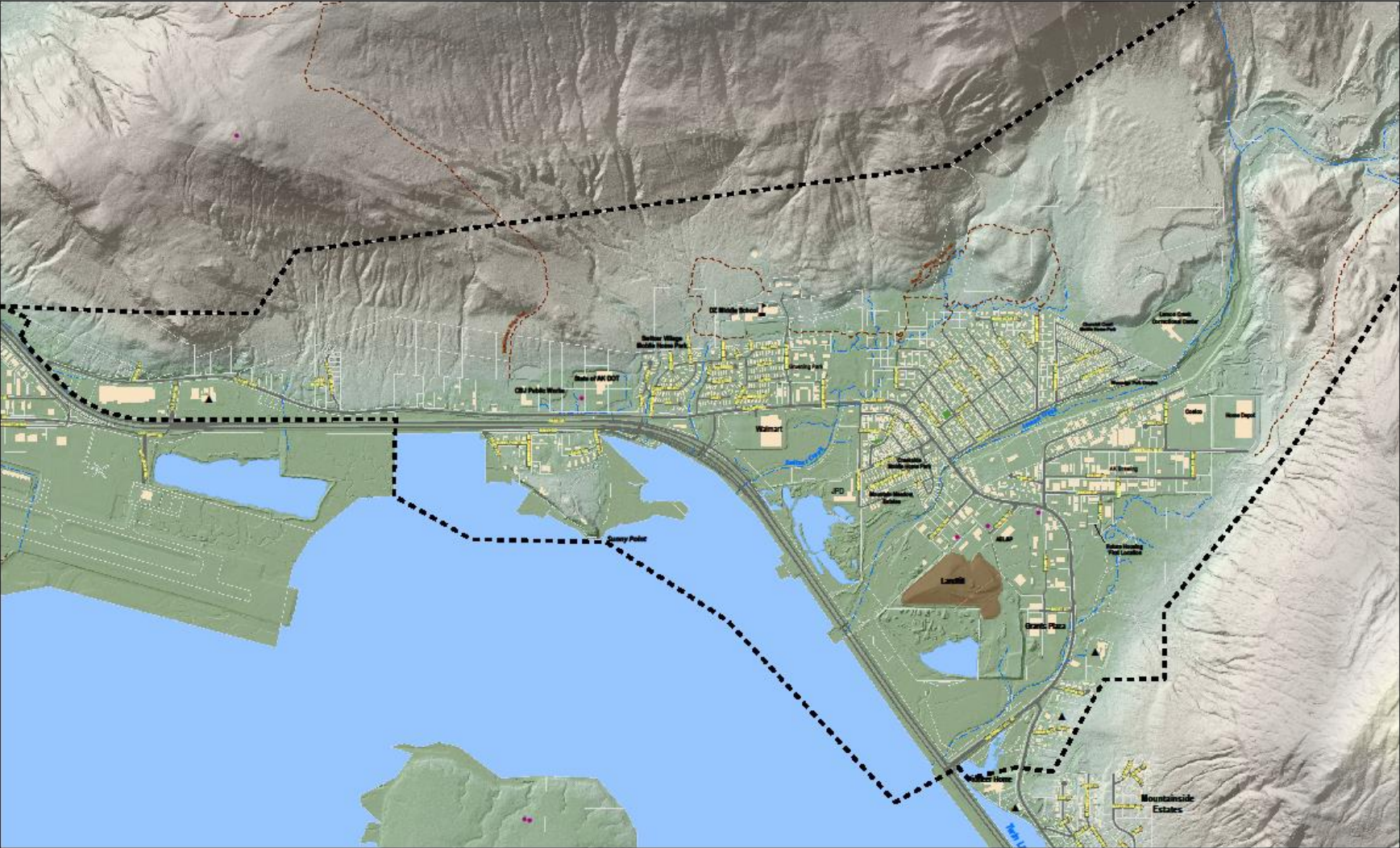
Parking Lot...

Vision Statement

The Lemon Creek Area Plan strives to encourage future development that will protect its cultural and natural resources, provide for quality housing, walkable, bikeable, safe neighborhoods, while sustaining its position as an attractive area for local businesses—Juneau’s Midtown.

The community of Juneau will use the plan to pursue ongoing solutions to enhance the livability and functionality of the area, while preserving, promoting, and enhancing positive features and economic growth for future generations.

Draft Boundaries



0 500 1,000 2,000 3,000 4,000 Feet



- ▲ Church
- Communication tower
- ⌘ School

- - - Trail
- Building
- Park

- Parcel
- Anadromous stream

- ⌘ Proposed plan boundary

The reoccurring theme of transportation plans for the Lemon Creek area are better connections for bicyclists and pedestrians, and mitigating the conflict between the residential and industrial/commercial vehicles.

Second Access Potential Routes

Scoping Summary Report
Lemon Flats Second Access

Juneau, Alaska
W.O. D39662

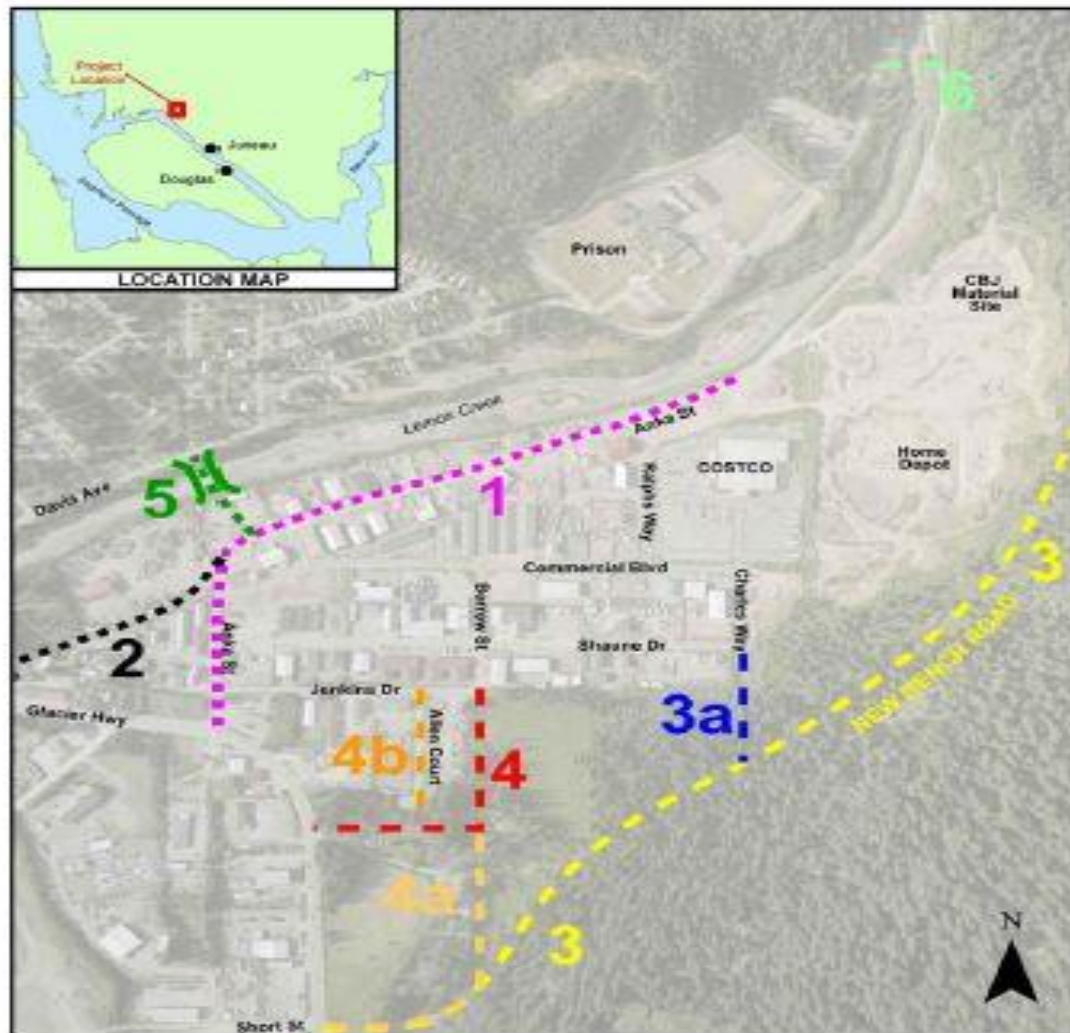


Figure 1: Project Location Map and Options

Goal 1: BUILD A LEMON FLATS SECOND ACCESS ROAD

***Action:* Further analysis Lemon Flats Second Access Draft Reconnaissance Study to select second access road route**

***Action:* Analyze potential of making the second access for public emergency vehicles and trucking only**

GOAL 2: FACILITATE SAFE MULTI-MODAL TRANSPORTATION ROUTES

***Action:* Develop a separated/dedicated bike path**

***Action:* Investigate grant or funding source to complete analysis of effects on wetlands**

***Action:* Identify potential routes and parcels necessary to construct the path(s)**

***Action:* Collaborate with private property owners to develop easements as necessary to construct the path(s)**

Goal 3: PROMOTE SAFE PEDESTRIAN, BICYCLE, AND TRANSPORTATION CONNECTIONS THROUGHOUT THE LEMON CREEK AREA CONSISTENT WITH STATE AND FEDERAL STANDARDS

***Action:* Create a pedestrian connection through the wetlands from the residential neighborhoods to the school**

***Action:* Advocate public transit for employees by encouraging employers to provide commuter benefits**

***Action:* Promote transit to Lemon Creek (i.e. Costco/Home Depot), for shoppers**

***Action:* Develop a public transportation system that grows “choice” riders, i.e. those who do not depend on transit**

***Action:* Advocate for DOT&PF’s improvement project plan for Glacier Highway’s pedestrian and bicycle improvements in the Lemon Creek Area**

Goal 4: PROMOTE INTERSECTION IMPROVEMENTS THROUGHOUT THE LEMON CREEK AREA

***Action:* Advocate for intersection signaling improvement at Davis Street and Glacier Highway**

***Action:* Advocate for DOT&PF's improvement project plan for Glacier Highway's intersection improvements in the Lemon Creek Area**

Goal 5: REDUCE THE IMPACTS OF TRANSPORTATION/INFRASTRUCTURE FOR THOSE LIVING AND WORKING IN THE LEMON CREEK AREA

Action: Fund an industrial/commercial traffic impact study

Action: Control dust by requiring industrial/commercial lots to apply dust control plans and/or improve lots with pavement

Action: Control dust by requiring industrial/commercial vehicles to apply dust control plans

Action: Advocate for funding to convert CBJ public transit vehicles to energy efficient models (reference - Energy Plan)

Action: Advocate for vehicle emission standards similar to those in California (reference - Energy Plan)

Saturday, February 4th

Public Design Workshop

9am – 12pm @ DZ Commons

Thursdays at 6pm:

February 23, 2017

Neighborhoods & Housing

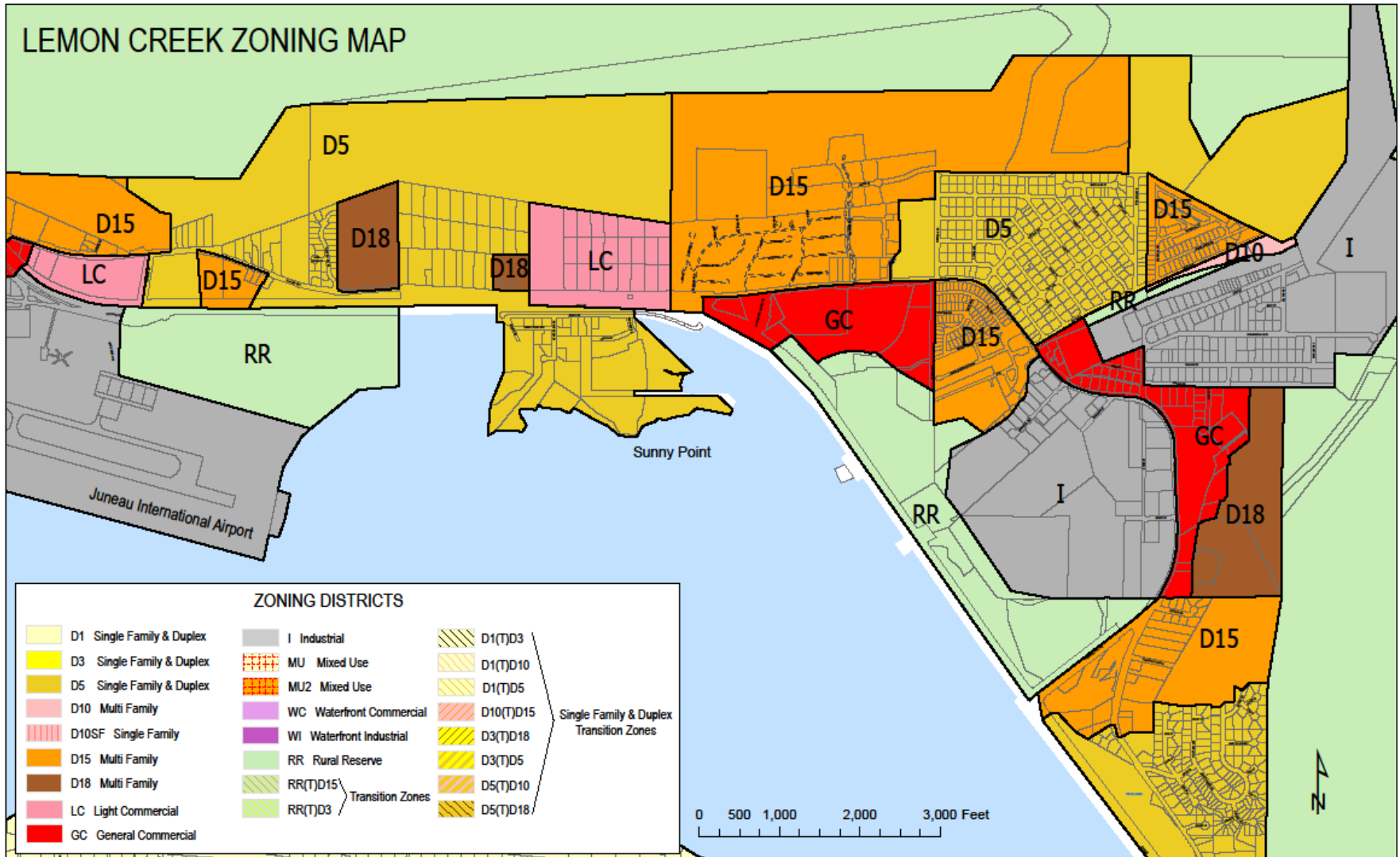
March 16, 2017

Economic Development

April 6, 2017

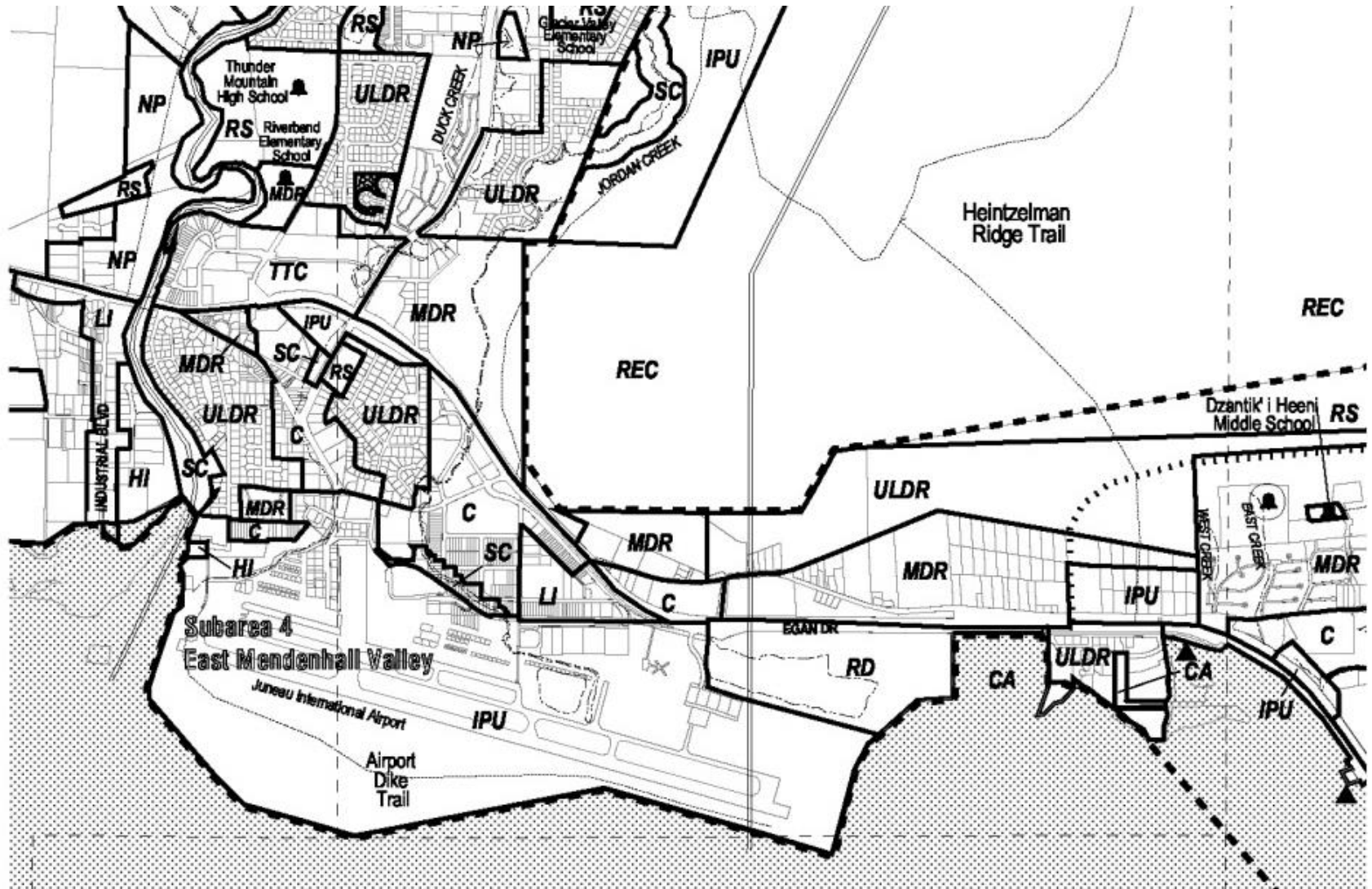
Natural Resources & Recreation

Zoning Map



Comp Plan & Land Use

Map G



Comp Plan & Land Use

Map H

