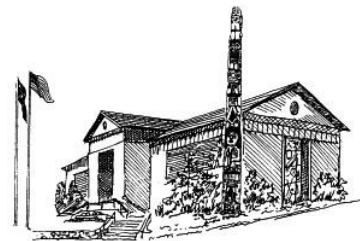


PAST & PRESENT

VOLUME 22, ISSUE 3

SEPTEMBER, 2018



THE CITY MUSEUM WELCOMES DIRECTOR, BETH WEIGEL

Beth Weigel began her position as Director with the City Museum on April 16th, 2018.

I am honored to be entrusted with the care and direction of such a beloved institution. One thing I find most exciting about taking on this role is how the mission directs us to “draw strength and perspective from the past . . . to find purpose for the future.

One of the most purposeful movements I see happening in our community is how many people and organizations are working together to increase the number of Tlingit language speakers. From a cultural heritage perspective, I believe the Museum can provide continuity in this effort.

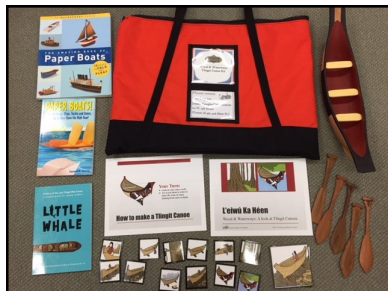
Toowú lak'é teen áwé woosh een yéi jigaxtoonei: We will work together in a spirit of goodness.

I hold a PhD in Communication from the University of Denver and have been an Adjunct Faculty member at the University of Alaska Southeast for 18 years. Prior to taking on the role of Program Coordinator for the Juneau Public Libraries, I was the Executive Director for Discovery Southeast for about six years and I started my career here in Juneau as the Assistant to the Dean of Faculty at UAS in 1999 when I moved here. I've also enjoyed a variety of roles in our community from ski instructor at Eaglecrest, naturalist guide at Gastineau Guiding, and longtime volunteer and past board member for K3 (KTOO/KRNN/KXLL) and the Cancer Connection.



City Museum Director, Beth Weigel.

JUNEAU-DOUGLAS CITY MUSEUM RECEIVES \$10,000 GRANT-IN-AID FROM ALASKA STATE MUSEUM



Example of a place-based education kit. *Wood and Waterways* provides hands-on resources to support lessons on canoes.

The Juneau-Douglas City Museum received \$10,000 through the Alaska State Museum's Grant-In-Aid program to develop five new place-based and hands-on history kits. These educational kits and associated curriculum will be developed in partnership with local educators who can also earn professional education credit through the University of Alaska for their work. The City Museum is currently seeking input from educators on what specific kit topics and themes will be most relevant to their teaching. Once developed, the kits will be available for checkout by teachers, parents, informal educators, and educational organizations through the Juneau Public Libraries. The City Museum will also host two professional trainings where educators can earn 500 level ED credit through the University of Alaska.

FALL/WINTER EXHIBITS SPOTLIGHT



Robins Love Berries Too: Tribute to Alice, oil painting by Dianne Anderson.

***Favorites*, Alice Tersteeg and Dianne Anderson**

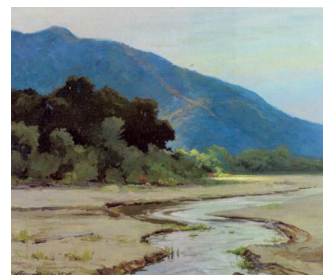
October 5th through November 24th, 2018

October brings Professor Alice Tersteeg and Dianne Anderson's joint show, *Favorites*, to the Murray Gallery. Anderson is a former student and teaching assistant to Professor Tersteeg and this exhibit is an expression of their teacher-student friendship. This multi-media exhibit will feature pieces melding painting, printmaking and handmade paper collage. *Favorites* will open with a First Friday reception on October 5th, 2018 and will run through the end of November.

Plein Rein: On Location with Sydney Laurence

December 7th through December 29th, 2018

Our December exhibit, *On Location with Sydney Laurence*, will feature paintings by the local plein air artist group, Plein Rein. The Plein Rein artists have been painting in outdoor locations and from vantage points they believe Sydney Laurence may have painted from one hundred years ago. In order to identify these locations, the group spent time together studying Laurence's paintings, old property maps, and the local landscape. Laurence's painting, *Early Morning Juneau*, was an inspiration for the exhibit: The Plein Rein painters gathered on the Douglas shoreline several early mornings to paint Gastineau Channel, Mt Juneau and Mt Roberts with the city at its base from Laurence's perspective. The painters also met at the Airport Dike Trail to paint the view in *Bend in the River*, the lily pads at Auke Lake, and other places Sydney Laurence may have painted. *On Location with Sydney Laurence* will open with a Gallery Walk reception on December 7th, 2018 and will feature each artist's own style and medium.



Bend in the River, by Sydney Laurence.
JDCM 2017.45.001.



Early Morning Juneau, by Sydney Laurence
JDCM 2010.24.001



Alexandra Bookless

January 4th through January 26, 2019

In January 2019, Alexandra Bookless will exhibit her paintings depicting the social and physical landscape of the North. For this solo show, Bookless strives to produce "refined and aesthetically beautiful work representing the people, wilderness, and history of the North while avoiding the trite and the already-done." Bookless will juxtapose oil paintings with plein-air watercolor paintings to add texture and variety to the exhibition.



Crystal Cudsworth

February 1st through February 23rd

February's solo artist exhibit will feature new work by Crystal Cudsworth whose multimedia paintings speak to the grandeur of Juneau's landscape. Cudsworth's collection consists of oil paintings collaged with pieces of manipulated historical photographs of the mining and milling industry. This series of works will re-tell Cudsworth's joy of being present in the rugged beauty of Juneau's outdoor community and will immerse the viewer into the changing landscape. Cudsworth's show will open with a First Friday reception on February 1st, 2019.

EKPHRASIS

Ekphrasis translates to
"description" in Greek.

Ekphrastic poetry
is a form of creative writing
describing a work of art
or visual image.

Ekphrastic Writing Class Exhibit

January 4th through March 30th

This exhibit will feature items from the City Museum's permanent collection displayed alongside written word pieces by University of Alaska Southeast Creative Writing students. Professor Emily Wall's Creative Writing class included an ekphrastic writing assignment. Most commonly, ekphrastic writing is a vivid description of a work of art in which the act of reflecting on the artwork, amplifies and expands its meaning. For this assignment, each student chose one object, artwork, or artifact from the City Museum's collection to contemplate. Using this object as a point of inspiration, students created a poem, memoir or flash fiction piece. Student work will be on display next to the object of inspiration. This exhibit will open with a First Friday Reception on January 4th, 2019 and will be on display in the Map Case Gallery through March.

Yéil



Winter in Juneau, 2009 Digital Photograph
Print by Larry McNeil. Museum Purchase.
JDCM 2009.43.002

Jinkaath Yoo X̱atánk Lingít X̱'éináx

January 4th through March 30th

Jinkaath Yoo X̱atánk Lingít X̱'éináx will be on display in the Media Room Gallery through April 2019 and will include ten Tlingit words displayed alongside ten curated items from the Museum's permanent collection. Viewers will be encouraged to learn both the meaning and pronunciation of the ten Tlingit words and can also participate in learning additional Tlingit vocabulary and phrases through interacting with Museum exhibits, utilizing language learning resources and consulting with a Tlingit language learning group. In addition, Museum visitors will be provided a Tlingit language "scavenger hunt" to assist in learning additional Tlingit vocabulary. Using a list of Tlingit words, participants will be encouraged to explore the Museum's exhibits to locate the words and find their meanings. Tlingit language learning resources and learning activities will be available in the Media Room Gallery for individuals or groups who want to use the gallery for language learning through April 2019.



UPCOMING EXHIBIT OPPORTUNITY

15th Annual 12x12 Community Art Exhibit

Each year the City Museum hosts a unique community art exhibit in which artists of all ages are encouraged to create works within the parameters of a square or a cube, measuring 12" x 12" (x 12") including the framing. For 2019, we encourage artists to create on the theme of "Elements". The exhibit opens with a First Friday Reception on March 3rd, 2019, and runs through Saturday, April 20th, 2019. For an entry form and more information, please visit our website:

juneau.org/library/museum/exhibit-opportunities

UPCOMING MUSEUM VOLUNTEER AND DOCENT TRAININGS

At the Museum over the coming year, Linda Nicklin will be creating curriculum and materials for the development and training of Museum volunteers, docents, and tour leaders, with a series of workshops and other opportunities for learning planned for Spring 2019.

Linda is co-designer of the Alaska Tour Guide Training curriculum developed through the Alaska Department of Community and Economic Development, and she teaches this workshop and other curriculums for guides, docents, and naturalists designed to improve communication skills and help participants create meaningful connections between their audience and subject or place. Here in Juneau, she is Director of Training and Tour Quality for Gastineau Guiding Company.

After graduating from Stanford University with a degree in biology and anthropology, Linda relocated to Alaska, where she fell in love with the state while spending summers in remote wilderness camps doing botanical surveys for the U.S. Forest Service. She has lived in Juneau for twenty-five years.

Some of Linda's favorite tours to lead in Juneau have been those that involve Juneau's history and community, the kind of stories that have a home at the City Museum.



Linda Nicklin is a naturalist and an educator. She has served as naturalist guide, expedition leader, and itinerary planner for private yachts and expedition cruise companies worldwide.

FREE WINTER ADMISSION SPONSORS

The Free Winter Admission program at the City Museum is now in its 19th year. Thank you to our sponsors for their ongoing support and for donations in memory of two museum and local history champions. Last year we saw 6632 visitors gain free admission, the highest attendance since the program began. Let's top that number this winter! Please come in and take advantage of this generous gift to our community.



October 2018
November 2018
December 2018
January 2019
February 2019
March 2019
April 2019

In Memory of Marie Darlin
Pioneers of Alaska Men's and Women's Igloo #6
Michelle Storer
Michelle Storer
Don and Alma Harris
In Memory of Scott Carrlee
Michelle Storer

MEET OUR NEW CITY MUSEUM STAFF MEMBERS



MINDY MEYERS, ADMINISTRATIVE ASSISTANT

Mindy Meyers is the new Administrative Assistant. She is excited about working at the Museum with all of the wonderful staff and volunteers. Mindy has worked for the City of Juneau for nearly twelve years, first in the Cash Office, then the Parks and Recreation office and finally at Centennial Hall before coming to the Juneau-Douglas City Museum. Mindy says, "I enjoy living in Juneau for all of the beauty and outdoor opportunities. My hobbies include quilting, sewing, skiing, cycling, kayaking, hiking with my dogs, and spending time with family and friends."

NIKO SANGUINETTI, MUSEUM CURATOR



Niko Sanguinetti is the new Curator of Collections and Exhibits. She received her Undergraduate Degree in History from the University of California, Santa Cruz and completed her Master's Degree in Museum Studies at the University of Aberdeen in Scotland. After working with various museums in Scotland, she returned to her home state of California to take up the post of Park Interpretive Specialist at Sutter's Fort State Historic Park and the California State Indian Museum. While there, she played a formative role in the shaping of a housekeeping and preservation policy for the historic site and in the maintenance and display of several collections of great historical significance. When she isn't getting terribly excited about planning new exhibits or about the latest discovery in a collection, she can usually be found on an adventure with her husband and dog.

CITY MUSEUM VOLUNTEERS MAKE IT HAPPEN!

The City Museum would not be able to operate without the generous contributions of our wonderful volunteers. Our volunteers bring knowledge, enthusiasm, and a genuine love of our city and its history.

This summer-fall season we were very grateful for our returning seasonal volunteers. We also happily welcomed new volunteers Jennifer Johnson, Betsy Longenbaugh, Ed Schoenfeld, Sally Donaldson, Martha Martinez, and Norm Cohen to the City Museum.

With nineteen front-desk shifts weekly, three Historic Downtown walking tours weekly, four Princess Sophia walking tours, four Treadwell walking tours, three Downtown Geology walking tours, forty-three Capitol tours and an October True Crimes walking tour, we were able to offer our visitors, and locals alike, a variety of interesting learning experiences.

This is a lot of volunteer hours! Rest assured we are keeping track of all hours logged and look forward to celebrating in December during our annual volunteer potluck. We really appreciate all of you. Thank you for supporting us through our many transitions this season.

Volunteers truly make it happen!



Front desk volunteers, Hetty Barthell and Kirk Smith.

Recent Acquisitions

The Juneau-Douglas City Museum took a collections hiatus from June through November 2018 while searching for a new curator, however, here are the acquisitions made in April and May of 2018.

- 2018.12 Pen and Box from Pioneers Jewelers donated by Adabel Hisey Sparman.
- 2018.13 Twenty six items related to the history of the library including newspaper clippings, Taku yearbooks and approximately 350 bound newspapers for the reference collection transferred from the Juneau Public Libraries.
- 2018.14 Juneau, Alaska photograph book published by Winter and Pond, 1909 donated by Ross Webb
- 2018.15 1937 First Day Cover Envelopes donated by Mike Blackwell
- 2018.16 Photographs, drawings, and paintings from various Juneau artists including Suzanne Tripp, Robert Parish, and Albert Elaine donated from the Rich and Peggy Poor Collection.
- 2018.17 Ball point pen advertising the Observatory Bookstore. Staff Collect.
- 2018.18 2018 Alaska Robotics Mini-Con Program. Staff Collect.
- 2018.19 Wood blocks and other carvings by Dale DeArmond and an awl used by the artist donated by the DeArmond Estates.
- 2018.20 Life ring from the Princess Kathleen donated by Robert Frampton and Denise Chase.
- 2018.21 Bookmarks from local bookstores and an Alaska Airline prayer book donated by the Hurley Estate.
- 2018.22 City and Borough of Juneau Archive Collection. Transferred from the City and Borough of Juneau, Office of the Clerk.



Pen and Box from Pioneers Jewelers, JDCM 2018.12.001



Juneau, Alaska Photograph Book, Winter and Pond 1909. JDCM 2018.14.001



Otter wood block carved by Dale DeArmond, JDCM 2018.19.003



Raven wood block carved by Dale DeArmond, JDCM 2018.19.005



Awl used by Dale DeArmond, JDCM 2018.19.009



Physical Address:

114 West 4th Street
Juneau, AK 99801

Mailing Address:

155 South Seward Street
Juneau, AK 99801

Phone: 907-586-3572

Fax: 907-586-4512

VISIT OUR WEBSITE AT
[JUNEAU.ORG/LIBRARY/
MUSEUM](http://JUNEAU.ORG/LIBRARY/MUSEUM)

JDCM STAFF:

Beth Weigel

Museum Director
beth.weigel@juneau.org
907-586-0968

Niko Sanguinetti

Curator of Collections & Exhibits
Museum.info@juneau.org
907-586-0965

Elissa Borges

Public Programs Coordinator
elissa.borges@juneau.org
907-586-0966

Mindy Meyers

Administrative Assistant
mindy.meyers@juneau.org
907-586-0967



JUNEAU-DOUGLAS CITY MUSEUM UPCOMING EVENTS CALENDAR

SEPTEMBER

- 3 CLOSED FOR LABOR DAY
- 7 FIRST FRIDAY: FREE ADMISSION, 4:00-6:00PM
- 22 BOOK SIGNING WITH MARY EHRLANDER, 10:30AM-NOON

OCTOBER FREE WINTER ADMISSION BEGINS

- 5 FIRST FRIDAY OPENING RECEPTION: *FAVORITES*, PAINTINGS BY DIANNE ANDERSON AND ALICE TERSTEEG, 4:30-7:00PM
- 13 COFFEE & COLLECTIONS ARTIST TALK WITH DIANNE ANDERSON AND ALICE TERSTEEG, 10:30AM-NOON
- 18 CLOSED FOR ALASKA DAY
- 27 TRUE CRIMES: CAPITAL KILLERS WALKING TOUR, 2:00-4:00PM
- 31 TRICK-OR-TREAT AT THE CITY MUSEUM, 2:00-4:00PM

NOVEMBER

- 2 FIRST FRIDAY: OPENING RECEPTION: *TEN TLINGIT WORDS TO KNOW AND USE* AND CONTINUING EXHIBIT, *FAVORITES*, 4:30-7:00PM
- 12 CLOSED FOR VETERAN'S DAY
- 14 WALTER SOBOLEFF DAY AND MONTH LONG EXPRESSING ENCOURAGEMENT & GRATITUDE THROUGH PERSONAL NOTES
- 17 COFFEE & COLLECTIONS: GEORGE DANNER III ON THE CONSTRUCTION OF GLACIER HIGHWAY, 10:30AM-NOON
- 22-23 CLOSED FOR THANKSGIVING
- 28 *SAYÉIK* FILM SCREENING AT THE GOLD TOWN NICKELODEON, 6:30-8:00PM
- 29 FOJDCM ANNUAL MEETING AT THE HANGAR BALLROOM 6:00-6:30PM; GUEST SPEAKER WAYNE JENSEN ON THE ALASKA CAPITOL REDESIGN, 6:30-8:00PM

DECEMBER

- 7 GALLERY WALK OPENING RECEPTION, PLEIN REIN PAINTERS: ON LOCATION WITH SYDNEY LAURENCE, 4:30-7:30PM
- 8 COFFEE & COLLECTIONS: ARTIST TALK WITH PLEIN REIN
- 22 MODEL TRAIN CONSTRUCTION AT THE MUSEUM, 10:00-3:00PM
- 25 CLOSED FOR CHRISTMAS

MUSEUM HOURS

OCTOBER through APRIL
Tuesdays-Saturdays 10am - 4pm



BECOME A FRIEND and receive
Museum benefits FoJDCM.org

MUSEUM ADMISSION

OCTOBER through APRIL
FREE thanks to our generous donors



LIKE & FOLLOW us on Facebook at
facebook.com/JuneauMuseumFriends



Juneau-Douglas City Museum
155 South Seward St.
Juneau, AK 99801

NOTICE of Annual Meeting



Hangar Ballroom

November 29th, 6:00-8:00pm

6:00-6:30 pm: Annual Meeting

6:30-8:00 pm: Guest Speaker Wayne Jensen on Capitol Redesign