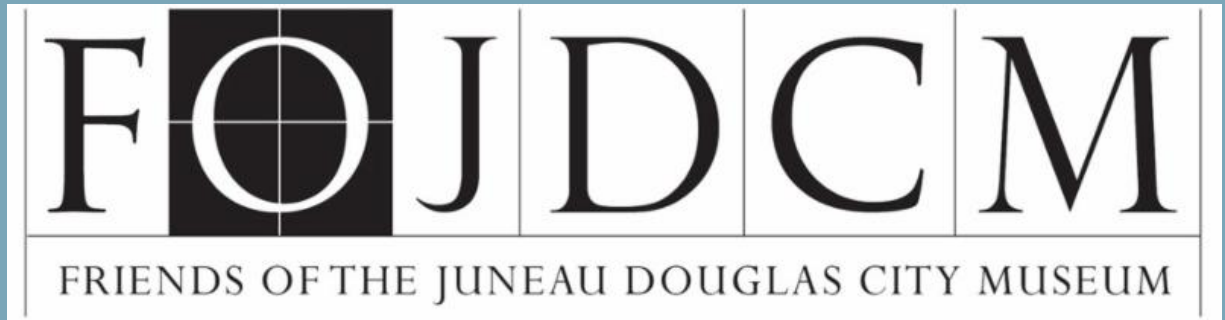


HISTORY ON THE CHANNEL
YOUR MONTHLY NEWS FLASH



THE DAILY ALASKA EMPIRE

"ALL THE NEWS ALL THE TIME"

VOL. LXVII, NO. 10,364

JUNEAU, ALASKA, March 1932

MEMBER ASSOCIATED PRESS

PRICE TEN CENTS



Frances Brooks Davis at
Mt. Edgecumbe, Sitka. Donated
by the Davis Family,
JDCM 89.26.009.

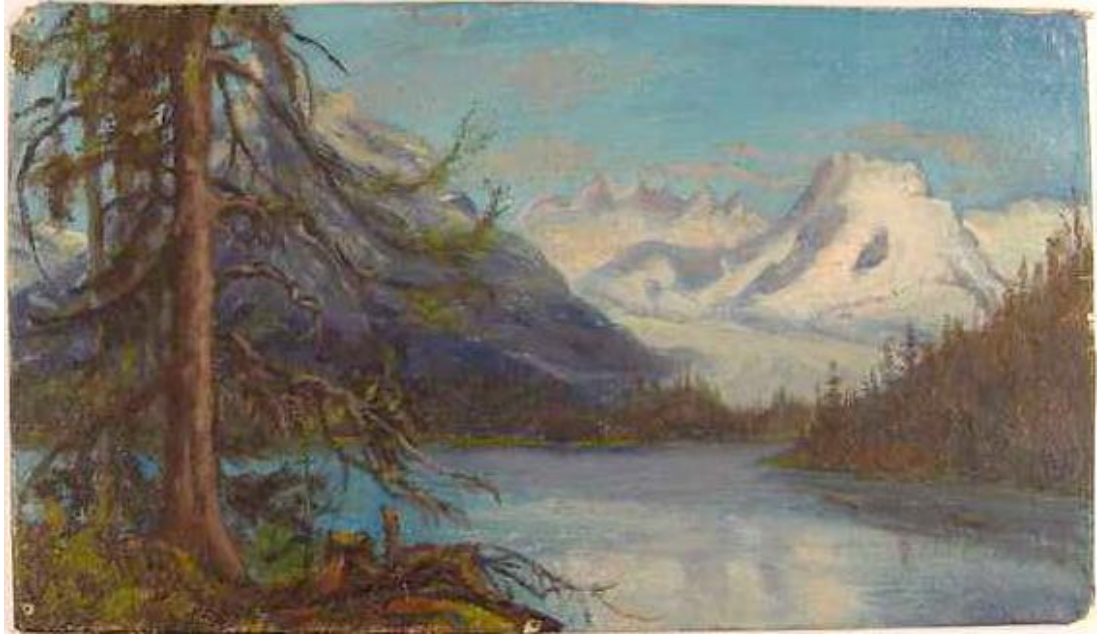
March is International Women's Day. We take note of this by featuring the life and work of Frances Davis, one of Juneau's foremost artists.

Her life is described in her obituary from the Daily Alaska Empire; her work is portrayed in these paintings from the Museum's collection.

MRS. J.M. DAVIS, LOCAL PIONEER, DIES

THURSDAY

Pioneer local artist passes away - resided in Juneau 41 years



Mendenhall Glacier by Frances Davis, c. 1900. Donated by Constance Davis, JDCM 2002.35.004.

Mrs. Montgomery Davis, 77, pioneer resident of this city, where she had resided for almost a half century, died Thursday morning at St. Ann's hospital, to which she had been removed several days ago after an extended illness. At her bedside when the end came were her daughter, Mrs. William Carlson, two sons, Trevor and Cedric, and her daughter-in-law, Mrs. Trevor Davis.

Funeral services will be held at 1:30 o'clock Sunday afternoon in Holy Trinity Cathedral. They will be conducted by Dean C.E. Rice. Interment, under the direction of the Charles W. Carter Mortuary, will be in Evergreen Cemetery.

The remains will lie in state in the chapel of the mortuary until 2:00 tomorrow afternoon.



Cordelia (Portrait of Cordelia Montgomery Davis) by Frances Davis, c. 1901. Donated by Tony Pope, JDCM 89.07.001.

Mrs. Davis had been a continuous resident of Juneau since 1891 and for many years was prominent in church, musical, and other circles.



Frances Caroline Brooks, circa 1890. Photograph by Theo C. Marceau. Donated by Trevor and Carol Davis, JDCM 82.05.003.

Mrs. Davis, formerly Frances Caroline Brooks, was born in London, England in 1855.

She was the daughter of George Brooks, Proctor of Doctors Commons, a lawyer engaged in ecclesiastical and admiralty cases. Her mother, Louise Pepys was related to Samuel Pepys, who wrote the celebrated Pepys diary.

As a young woman, Mrs. Davis decided on a career as a painter, musician, and linguist, so her education was formulated with that end in view. Several years were spent in Italy, France, and Germany in the pursuit of her studies. Her summer holidays were usually spent in Switzerland, Holland, Sweden, Norway, and Denmark, painting and sketching.

Mrs. Davis spent seven years studying in painting, sculpture and drawing, at the South Kensington School of Arts in London, under Sir Edward J. Poynter, the noted English artists who was president of the Royal Academy.

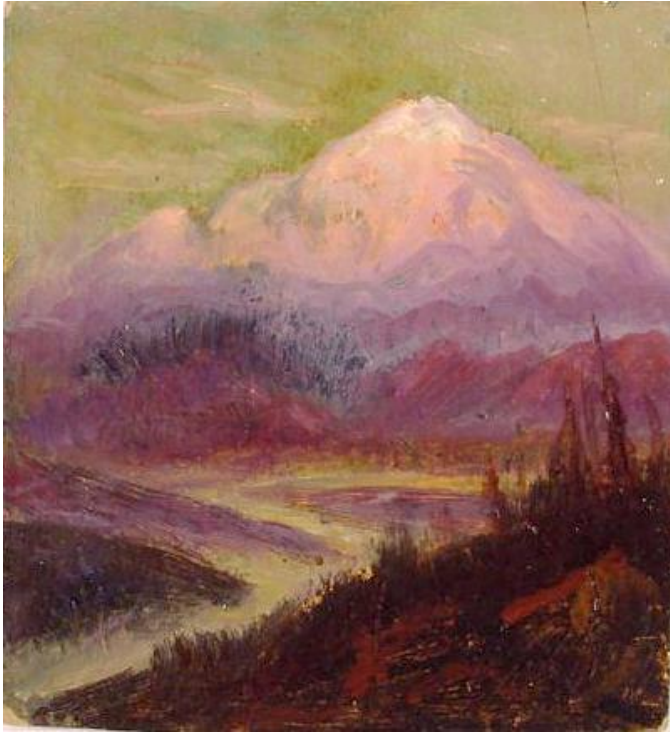
Early in 1891, Mrs. Davis accompanied some friends to Canada, arriving in Montreal and continuing over the Canadian Pacific Railway to Vancouver and then to Victoria, where she stayed for a short time. Her friends were returning to England, but she decided to visit California and went to Alameda. While there, she learned of the wonderful scenery of Alaska, so she engaged passage on the steamship Topeka, arriving in Juneau in August 1891. Shortly



Portrait of John Montgomery Davis, c. 1893, by Frances Davis. Donated by Trevor and Carol Davis, JDCM 88.22.002.

after her arrival she met J. Montgomery Davis, to whom she was

married in March 1892.



Untitled Landscape Painting, c. 1900 by Frances Davis. Donated by Constance Davis, JDCM 94.21.010.

During her a 41 years' residence in Juneau she accumulated a large and something collection of paintings of Alaska scenery and subjects. She also they did many religious subjects: the station's of the cross, Saint George, and other topics, some for churches in England. She has never commercialized her work, being prompted only buy love for the art she had chosen, early in life.

Mrs. Davis was a member of the Church of England all her life as were her ancestors. Since her

arrival in Juneau she helped to build the present Holy Trinity Cathedral. The paintings in the Cathedral, and the painting in the Episcopal church in Ketchikan are part of her work. *[Abridged]*

History on the Channel is brought to you by the FoJDCM whose mission is to promote Juneau-Douglas history and support the City Museum.

Do your part to support Juneau community history by renewing or becoming a 2018 Member.

Click [here](#) to read about membership levels and benefits, and to purchase yours today!

FOJDCM
P.O. Box 22450
Juneau, Alaska 99802
Phone: 907 586-3572

friendsjdc@gmail.com
www.FoJDCM.org

