

Past & Present

Juneau-Douglas City Museum: Collecting, preserving and interpreting Juneau-Douglas history and culture

Volume 14, Issue 3

September 2010

Shifting E-Gears...

In our last issue we decided to make a seemingly temporary shift by including an in-depth article on the balance of exhibiting and preserving of our cultural heritage where our *Recent Acquisitions* listing usually resided. Following the release of that edition, we decided to shift the focus of our newsletter to allow for more feature articles on major museum projects and collections issues while ensuring our interested readers still receive updated listings of recent acquisitions.

Along these lines, we will be utilizing our e-flyers to announce exhibit openings, upcoming classes and other more immediate happenings.

Not on our e-flyer list? Email: Alysia_Jones@ci.juneau.ak.us or call 586-3572.

INSIDE THIS ISSUE:

<i>Museum lighting and reception desk upgrades</i>	2
<i>Celebrating 10th Season of Free Winter Admission</i>	2
<i>Meet the new faces at the Museum</i>	3
<i>Volunteers on View</i>	4
<i>Museum Store</i>	4
<i>Recent Acquisitions</i>	5
<i>Calendar of Events</i>	6

DRILLING & MILLING: Hands on Mining in Production



Museum staff donning hard hats in preparation of upcoming hands-on mining exhibit. (From left to right): Amanda Chisholm, Museum Administrative Assistant; Jennifer Treadway, Museum Intern; Jane Lindsey, Museum Director; Alysia Jones, Curator of Public Programs; and Addison Field, Curator of Collections & Exhibits.

Question: What is going to have a model of the Treadwell collapse, a hand-cranked two-stamp mill, hardhats and miner's tags, and a mineral identification activity?

Answer: The City Museum's next hands-on history exhibit!

Installation of our coming exhibit *Drilling & Milling: hands-on mining* has already begun. Staff members have been preparing the gallery for a whole host of new interactive activities. Museum Director Jane Lindsey and custodian Larry Blatnick have been painting sections of the room to simu-

late the feel of a mine. Curator of Collections & Exhibits Addison Field and volunteer Joe Sears, have been installing cribbing to give the feel of being underground.

We are also working with Hecla-Greens Creek to build a hand-cranked two stamp mill. Technicians from Greens Creek, over at Hawk Inlet are currently working on the stamp mill interactive. Once completed it will be barged to town and installed at the Museum. Visitors will be able to put rock in, turn a hand operated crank and operate the stamps. We hope to have

it installed by the middle of November.

We are also nearing installation of a model of the Treadwell mines. This model will depict 10 different scenes from the night of 21-22 April, 1917, when the ground around the Natatorium subsided and initiated the collapse which allowed the rising tide in Gastineau Channel to flood the Treadwell, 700' and Alaska Mexican mines. This interactive was funded in part by a Grant-in aid from the Alaska State Museum and is currently under construction by Commercial Signs & Printing.

In addition to these two big interactive activities, we are working on an expanded Weights & Measures area with activity sheets and a mineral identification activity. Once these projects are finished we are planning to work on an interactive about the Salmon Creek Dam and hydroelectric power generation in Juneau.

As you can see above, the room is already equipped with miner hard harts and we'll soon have miner ID tags fashioned after those used in Juneau's mines.

The mining room will open to the public on December 3, 2010 from 4:30-7:30.

City Museum Moves Towards Greener Operations and Better Services



While the Museum readies itself to finalize its lighting system upgrade we have been able to monitor electrical usage savings. In July 2009, the Museum pulled its incandescent bulbs and installed LED bulbs in an effort to reduce record heating in the building. LEDs not only produce less heat, but also draw less electricity.

Data from the summer of 2010 indicates that the switch to LEDs and use of 4-5 fans in the galleries resulted in gallery temperatures peaking in the neighborhood of 76 degrees, 1 or 1.5 degrees lower than in 2009. The Museum's electrical usage decreased by 4480 kw from 2009: 21,136kw to 2010:16,656kw). We are encouraged by this data and

will soon replace as much gallery track as possible and upgrade to dimmable LED track heads. Dimming will allow more control in exhibit lighting and increase energy savings while prolonging the life of the bulbs.

With the help of CBJ Engineering Department, we have been able to re-allocate savings from past Museum capital improvement projects to incorporate a reception desk/gift shop area upgrade along with the lighting upgrade. This upgrade follows recommendations from our 2006 facility remodel assessment and will place the visitor's reception and gift shop area where the map case presently resides flowing about eight feet into our temporary gallery. The new configuration will create more room for volunteers and staff to work at the front

desk, allowing us to better serve visitors in a multitude of capacities including: purchasing museum admission, asking directions, requesting research assistance, and buying gifts. This plan will also allow for gift shop storage and display areas that are separate from Museum exhibits and hallways. Old carpet will be pulled up, and new, easy to care for carpet tiles will be installed.

As Museum professionals who take pride in the quality of our history and art offerings, we are encouraged by our recent and on-going facility and collections upgrades. We are confident that we are utilizing and caring for this community's historic building while providing high quality exhibits, collections care and visitors' services.

Juneau-Douglas City Museum Celebrates 10th Season of Free Winter Admission

In the fall of 2000, the Juneau-Douglas City Museum began soliciting local organizations and individuals in an effort to provide the greater Juneau community with free admission to the Museum during the winter months. This fall, we are proud to celebrate our 10th season of free winter admission.

The Museum would like to extend a heartfelt thank you to local organizations and individuals who have sponsored free winter admission over the past ten years and hopes the com-

munity will show *their* support by visiting this fall and winter.

Individuals such as Michelle and Robert Storer have contributed annually since 2004, while Don and Alma Harris have been contributing to free winter admission for over three years. The Pioneers of Alaska, the Gastineau Channel Historical Society, and a donation made in memory of Harold O. Fossom have also been faithful contributors to free winter admission.

With free admission now

through April 2011, there is no excuse for not visiting the City Museum. Check out our various solo artist exhibits, join us for a hot cup of coffee and Juneau history at one of our *Coffee & Collections* presentations, or plan an outing with the whole family to rediscover the history of our community by-

touring the Montana Creek Fish Trap and Assay Lab diorama, perusing *The Mighty J and Only Ten Survived* in our audio/visual gallery, or watching digital stories produced by local middle school students on a variety of topics including the

recently added *Cultures of Juneau* stories.

If you or your organization is interested in sponsoring a month of free winter admission at the Juneau-Douglas City Museum, please contact Museum Director, Jane Lindsey at 586-3572 or e-mail:jane_lindsey@ci.juneau.ak.us.

A complete listing of the 2010-2011 Free Winter Admission sponsors can be found on page 3 or at:

www.juneau.org/parkrec/museum/FreeWinterAdmission/php.

2010-2011 Free Winter Admission Sponsors

October:

Pioneers of Alaska Men & Women's Igloo #6

November:

Don & Alma Harris

December:

Michelle & Robert Storer

January

In Memory of

Harold O. Fossum

February:

In Memory of

Harold O. Fossum

March:

Michelle & Robert Storer

April:

Michelle & Robert Storer

Thank you

**to our 2010-2011 Free Winter
Admission Sponsors
for your continued support of
the Museum & the greater
Juneau Community.**

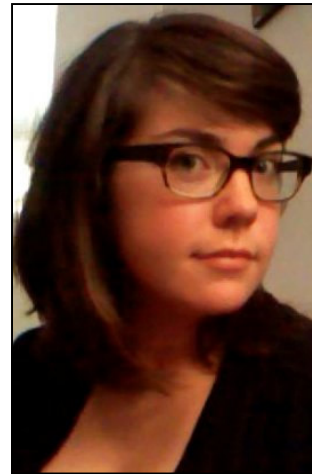


155 So. Seward St., Juneau, AK 99801 (907) 586(3300) ext. 226

Meet Amanda our New Administrative Assistant

Former Administrative Assistant Claire Imamura left the Juneau-Douglas City Museum in late August to pursue a Masters of Library Science at the University of Washington in Seattle. We wish her all the best and although we certainly miss her, we are very excited to welcome our new Museum administrative assistant Amanda Chisholm!

Born in Portland, Oregon Amanda was raised outside of Seattle, Washington, Amanda first came to Juneau in 2006 for summer employment and fell in love with Juneau's vast



beauty and vibrant arts community.

After receiving her Bachelors of Arts in Art History and Museum Studies from Western Wash-

ington University in 2007, she spent two years working in non-profit museum development, office administration, and guest services at the Bellevue Arts Museum.

In the summer of 2009, Amanda decided to make a fresh start, and return to Juneau permanently. She enjoys adventures in gastronomy, crafting with neighbors, and playing old time and bluegrass bass. She loves living in Juneau and is looking forward to her position as the new Administrative Assistant at the Juneau-Douglas City Museum.

Meet Jennifer, the Museum Intern



Hi, my name is Jennifer Treadway, and I am the current intern at the Juneau-Douglas City Museum. This past spring, I graduated with a Bachelor of Arts in history from Roanoke College in Virginia. After working as a student assistant in the Roanoke College archives for two years, I accepted this internship with the City Museum to experi-

ence all aspects and operations of a small museum; thereby, using the experience at the City Museum to determine whether to enter into a museum or archival graduate school program while also enjoying all the great opportunities that Juneau has to offer.

As an intern at the City Museum, I contribute to work in collections, public programming and visitor reception. In collections, I enter data into the Museum database, take photographs of objects in our collection, mark objects with accession numbers for entry into the permanent collection, assist with making labels, collect data regarding the environment of the museum, and help with the

installation and de-installation of exhibits. One of my main collections projects is to assist with the entry of hundreds of photographs donated by the Juneau Volunteer Fire Department into our collection database.

Within the realm of public programming, I often assist staff with educational school groups by leading scavenger hunts or I Spy activities within the Museum. I also assist with public events such as First Fridays, writing press releases and designing flyers. One of my main projects in public programming has been to complete a picture look book and reference guide to accompany the digital stories videos in the *Politics, Personalities & Power* gallery.

Volunteers on View

Jim Geraghty: As a vital part of the Juneau Douglas City Museum’s “reference team,” Jim Geraghty has worked diligently to prepare numerous research presentations on a myriad of local history topics such as mining in Juneau, the Log Cabin church, and most recently *The Story of the Revenue Cutter*



Wayanda. Jim has aided in the selection of various pieces for the Museum’s photography collection such as the Schmitz Collection of Photographs by J.C.

Haines, and *A Miner’s Rescue*, a series of postcards documenting the story of a group of miners who rescued an injured prospector from Taku Basin. Jim’s dedication to the history of our community is consummated by his always entertaining and incredibly informative lectures. Whether it’s spending extra time after his lectures to field questions, or leading Juneau Explorers through the Treadwell Trail, Jim’s hard work and expertise help make JDCM public programs and collections so valuable and enriching to our community. Thanks Jim!

Dick and Marie Kent: Starting in 1986, Dick Kent has been volunteering at the City Museum longer than any other volunteer.

Marie is no short-termer either beginning volunteering at the Museum in 1996. With smiles and a warm attitude, this couple goes the extra mile to make sure Museum guests as well as visitors to Juneau get the most out of their experience. In the summer months, Dick and Marie have even acted as travel planners and personal guides to Juneau visitors. At the front desk they also assist with research questions and collecting and tallying visitation information from our guest books. Full of a wealth of knowledge about Juneau and the history of our community, Dick and Marie are invaluable assets to our volunteer staff and the City Museum family.



Interested in volunteering? Contact Amanda Chisholm at 586-3572 or by email at amanda_chisholm@ci.juneau.ak.us.

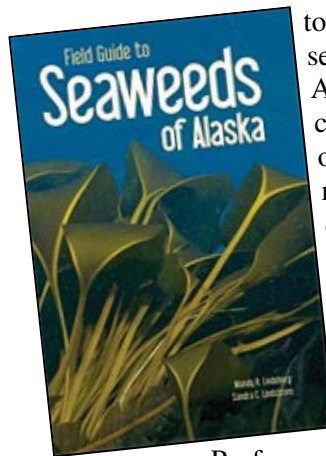
Got History? Come and Get It at the Museum Store

Just in time for the winter season, check out our long sleeved Juneau Douglas City Museum t-shirts! Designed by former intern Jenny Gilmore, the sleeve features the *Harnessing of the Atom Totem Pole*, found on the western lawn of the Museum. Perfect for Southeast AK layering, show your love for the City Museum this season with a bold and functional long sleeve t-shirt. On sale right now for \$20.



NEW! A Field Guide to Seaweeds of Alaska

The Museum is thrilled to carry the first and only field guide to more than 100 common seaweeds, seagrasses, and marine lichens of Alaska. Filled with color photos and clearly written descriptions printed on water-resistant paper - it is a must-have addition to the reference collections of any scientist, coastal monitor, naturalist, educator, student, or beachcomber interested in Alaska's coastal ecosystems. Written by local Juneau biologist Mandy Lindeburg, and coauthored by University of British Columbia Professor Sandra Lindstrom. Pre-order your copy for the holidays or come in to the gift shop while supplies last!



Every year the City Museum prints and mounts dozens of label and photos for our exhibits. Now you can enjoy your favorite exhibit photos even after the galleries have changed. The Museum Store currently carries labels from the 2009 exhibit *Hoop Time: Gastineau Channel Basketball Through the Years*. Come peruse these historic photographs, and take home a photo of your favorite players! Photos and labels are priced by the square inch.



If you have any questions regarding the Museum Store, please call Amanda Chisholm at 586-0967 or email amanda_chisholm@ci.juneau.ak.us.

Recent Acquisitions

January - September 2010



South Seward Street Serenade By Dan Deroux. JDCM2010.07.

2010.01	Photographs of Bridge Construction, Gift of Sue Brock	2010.14	Sít' Eetí Shaanáx Dedication Objects, Gift of Ross Soboleff
2010.02	Brandon Hauser Photographs, Rasmuson Art Acquisition Fund Purchase	2010.15	Toe Cartoons, Rasmuson Art Acquisition Fund Purchase
2010.03	Ron Klein Panoramic Photograph, Gift of Mary Anne Slemmons	2010.16	Puanani Maunu Paintings, Rasmuson Art Acquisition Fund Purchase
2010.04	TOE Cartoons, Museum Purchase	2010.17	Political Button, Gift of Betsy Brenneman
2010.05	50 th Anniversary of Statehood Collection, Gift of the Celebration Committee	2010.18	Marye Bernhofer Burns Photo and Ephemera, Gift of Charolyn Concepcion
2010.06	Dale DeArmond Drawings Gift of John Jensen	2010.19	Greens Creek Mineral Sample, Gift of Caroline Cave
2010.07	Dan DeRoux Painting, Rasmuson Art Acquisition Fund Purchase	2010.20	Ivory Collection, Gift of the Monagle and Lillegraven Family
2010.08	WWII "Off Limits" Sign, Gift of Michael Fleischhauer	2010.21	Tlingit Haida Pot Holder, Gift of Jane Lindsey
2010.09	Sharon Lobaugh Portrait of Dale DeArmond, Transfer from Juneau Public Libraries	2010.22	Marine Highway Button, Gift of Robert Wright
2010.10	Illustrations by Tony Newman, Museum Purchase	2010.23	Percy's Café Ephemera, Gift of Mickey Lesley
2010.11	Photograph of Roy Coble, Gift of Maxine Johnston	2010.24	Sydney Laurence Painting, Gift of the Friends of the Juneau- Douglas City Museum
2010.12	Photo Portrait of Trevor Davis, Gift of Sylvia Davis	2010.25	Winter & Pond Photographs Gift of Bernice Shick
2010.13	Celebration 2008 Ephemera, Gift of Frances & Addison Field	2010.26	Objects from the Jim Ruotsala Collection, Gift of the Jim Ruotsala Estate
		2010.27	Caulk Boots, Gift of David Woodie
		2010.28	Juneau Cold Storage Cap, Gift of Ken Imamura
		2010.29	Alaska Centennial Ashtray, Gift of Dotty Nelson
		2010.30	Frances Davis Painting, Gift of Mike Kirk
		2010.31	Photographs of Taku Glaciers, Gift of Vicki Sharp

Past & Present

Newsletter of the

Juneau-Douglas City Museum

located at the corner of Fourth and Main
Streets in Alaska's Capital City.

WINTER HOURS:

Tuesday-Saturday 10am-4pm

Office hours: 9am-5pm

ADMISSION:

Free Winter Admission this month
thanks to:

Don & Alma Harris

CONTACT US:

Phone: 907 586-3572

Fax: 907 586-4512

www.juneau.org/parkrec/museum

Mailing address:

155 S. Seward St.

Juneau, AK 99801

MEET OUR STAFF:

Jane Lindsey, Director

Jane_Lindsey@ci.juneau.ak.us

907-586-0968

Addison Field, Curator of
Collections & Exhibits

Addison_Field@ci.juneau.ak.us

907-586-0965

Alysia Jones, Curator of Public
Programs

Alysia_Jones@ci.juneau.ak.us

907-586-0966

Amanda Chisholm, Museum
Administrative Assistant

Amanda_Chisholm@ci.juneau.ak.us

907-586-0967

Jennifer Treadway, Museum Intern

Museum_intern@ci.juneau.ak.us

907-586-0969

CITY MUSEUM FALL EVENTS CALENDAR

November

6 *Coffee & Collections: Party Animals & Stuffed Shirts: The Social Histories of Ravens and Eagles* with Sandy Harbanuk and Blueberry, 10:30am at the City Museum.

11 Museum closed in observance of Veterans' Day.

20 *All Things Eagle and Raven* exhibit closes.

Felting Ornament Workshop with Sara Lee,

Two sessions available: 1:30-2:30 OR 3:00-4:00. More information at: www.juneau.org/parkrec/museum

25-26 Museum closed for Thanksgiving Holiday.

December

3 *Photography by Ron Klein & Michael Penn* opening reception 4:30-7:30pm. Exhibit runs through January 29, 2011.

Drilling & Milling: hands-on mining exhibit opening.

4 *Coffee & Collections: Sydney Laurence's Juneau* with Mike Blackwell, 10:30am at the City Museum.

13 Volunteer Holiday Potluck, noon-1:00pm at the City Museum.

25 Museum closed for Christmas Day

January

1 Museum closed for New Years Day.

