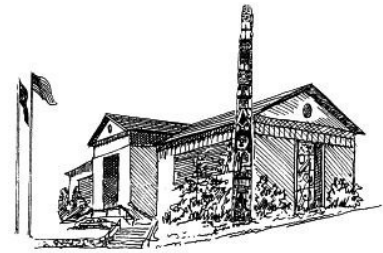


# PAST & PRESENT

VOLUME 17, ISSUE 1

MAY 2013



## DAN FRUITS: NEW WORKS

Dan Fruits is a Juneau resident and a lifelong artist; he has been a potter, a print-maker, and a painter. In the last twenty years he has concentrated on painting. Since coming to Alaska in the 1970s, the State has been his inspiration, and his experiences in Alaska are reflected in his art. Fruits earned a Bachelor of Science in Art Education and worked toward an MFA at Ball State University in Muncie, Indiana. He has taught art at every educational level and feels that he still learns something new with every painting. Fruits comments on his show,

*Dan Fruits: New Works*, opening on May 3rd and running through the summer, “The work is coming together nicely; it might be my best work yet and I have done many shows.” Fruits considers art to be a common thread throughout his life. Like many artists he has worked a variety of jobs, but he has always found time to create art. The urge to paint is constant for him and inspiration can come from a variety of sources: photographs, other paintings, a random idea, or the view from the living room window. Like the characters in a novel that develop

their own personalities, each of his paintings holds the possibility of invention and discovery. Fruits aims to add, in some interesting and original manner, to the long tradition of painters making art. Do not miss the opportunity to see *Dan Fruits: New Works* opening on Friday, May 3<sup>rd</sup> from 4:30-7:30pm.



Photo Credit: Dan Fruits, *Untitled -Lynn Canal*, on loan from Dan Fruits.

## JEFF BROWN'S MASTERPIECES OF MERRIMENT



Photo Credit: Jeff Brown, *Southeast Alaskan Sundae*, on loan from Jeff Brown, L2012.09.062.

Come visit the Juneau-Douglas City Museum on Friday, May 3<sup>rd</sup> from 4:30-7:30pm and be prepared to laugh at *Jeff Brown's Masterpieces of Merriment*; after all, this is just the response Brown would like to see. Jeff Brown is a local radio and television personality, humorist, author, magician,

artist, balloon twister, project manager and more. He believes his ultimate mission in life is “to make people happy and to make people laugh.” And for approximately 40 years, Brown has been fulfilling that mission by entertaining Juneau with his quick-wit, his balloon creations, his publications, and his involvement with various community activities and events. In 2010 Brown released his publication of REAL ALASKAN Magazine. His satirical outlook of Juneau and Alaska is highlighted in this publication and is guaranteed to make you smile. In

2011 Brown received the Lifetime Achievement Award, a celebration of his work in the arts and humanities. Along with these accomplishments, Brown has produced a collection of humorous postcards. These 4” x 6” masterpieces put a unique and comical spin on Alaskan reality. Jeff says, “Many people look at a scene and marvel at its beauty. I look for the joke.” He continued by admitting, “I love puns and tongue-in-cheek humor, and lacking the ability to draw a straight line, I appreciate photography’s ability to adjust the viewer’s sense of reality and

### INSIDE THIS ISSUE:

GIFT SHOP NEWS	2
VOLUNTEERS ON VIEW	2
HISTORIC DOWNTOWN WALKING TOUR	2
COLLECTIONS CORNER	3
RECENT ACQUISITIONS	3
HEATING, HUMIDITY, AND VENTILATION UPGRADE PLANNING BEGINS	4
FRIENDS NEWS	4
JUNEAU MEMORIAL BUILDING PLANNING GRANT HISTORIC PRESERVATION FUND CERTIFIED LOCAL GOVERNMENT GRANT	4
FRIENDS SUPPORT PURCHASE OF NEW MITY-LITE CHAIRS	5
GRANT-IN-AID UPDATE	5
CALENDAR	5

make them ask, ‘Did this really happen?’” The postcards on view were created by Brown in the 1980’s when the creative production process was different than how we think of it today. As Brown noted, “The majority of these cards were produced before Photo-Shop, using scissors, glue-stick and a #2 pencil, along with a little imagination.”

## JUNEAU-DOUGLAS CITY MUSEUM GIFT SHOP NEWS

With the summer tourist season beginning there has been an influx of new items to the Museum Gift Shop. We are featuring the local jewelry artist, Thyes Shaub, who works with several different materials including abalone and Swarovski crystals. In addition to Ms. Shaub's jewelry, we have pieces by two other Southeast art-

ists. Debi Knight Kennedy, from Haines, who works in sterling silver, creates pieces with a native influence. Fog and Fern, designed by Juneau artist Amy Rautiainen, features unique asymmetrical designs, wire-wrapped gemstones and handcrafted components in striking color combinations. Other new items added to the Gift Shop

are 8x10 Giclee prints from several different artists, magnets (including two that are reproductions of work in the JDCM collection and can only be purchased here), vintage inspired children's toys, new books for children and adults, and new art cards. When you're out and about in Downtown Juneau, don't forget to stop by.



Photo Credit: *Thyes Designs* by Thyes Shaub featured at the Juneau-Douglas City Museum.

## VOLUNTEERS ON VIEW

Ever wonder what goes on behind the scenes at the Museum? Volunteering is a great way to find out.

Learn about local history, serve Juneau's cultural community, and attend social and educational events.

Volunteers work on a regular, seasonal, or on-call basis, weekdays, weekends, or occasional evenings. There are several different ways to volunteer, with Front Desk-Visitor Services being the

primary way. Other options available are assisting with Juneau Explorers and other public programs, providing refreshments for events and programs, assisting with special events, and helping out in our collections. There are more in-depth descriptions of these opportunities available if you are interested. Once a volunteer has contributed 20 hours of service, they automatically become a member of the Friends of the Juneau-

Douglas City Museum group and receive several benefits including a 20% discount in the Museum Gift Shop, an Annual Pass good for the member and a guest, one ticket for the Museum walking tour, and one ticket for the annual mining lecture. If you are interested in receiving more information on volunteering or are ready to jump right in, email or call Christina Bruce, Museum Administrative Assistant,

“LEARN ABOUT LOCAL HISTORY, SERVE JUNEAU'S CULTURAL COMMUNITY, AND ATTEND SOCIAL AND EDUCATIONAL EVENTS.”

see page six for contact information.

## HISTORIC DOWNTOWN WALKING TOUR

Join a local Juneau-Douglas City Museum guide for a stroll through part of Juneau's original townsite. Learn how Juneau's mining past changed the landscape of downtown Juneau and hear stories about the personalities of early Juneau, including tales of prominent Alaskan figures and Juneau families. The tour includes a visit to Juneau's oldest church and concludes with a visit to a historic house for refreshments. The *Historic Downtown Walking Tour* is a moderate walk, involving stairs and uphill and downhill walking. The *Historic Downtown Walking Tour* is available May through September. Walking Tour Fees: Admission to the Juneau-Douglas City Museum is included. \$20 Adults -13 & older, \$15 Youth -12 and under. Ask us about our special group rate for up to 10 people. For more information call 907-586-3572.



Photo Credit: *Juneau, Alaska, Looking West.* JDCM 2007.42.004.

### COLLECTIONS CORNER



Photo Credit: Salmon Creek Dam & Hydropower exhibit in the Juneau-Douglas City Museum's Hands-On Mining Room.

While I am often in the basement taking care of the collection, creating or updating exhibits is a side of my job I really enjoy. It is fun and exciting to embrace my creative side and offer something new to the public. We've recently installed a few new additions to our Hands-On Mining Room. To complement the existing hydro-panel, we've added three beautiful black and white photographs of Salmon Creek Dam during its construction in the early 1900's. The new text panels give information on the dam's construction, history and its current power production for the city of Juneau. When you are visiting the City Museum to see this year's summer exhibits, *Dan Fruits: New Works* and *Jeff Brown's Masterpieces of Merriment*, don't forget to walk around the rest of the galleries and become reacquainted with our permanent exhibits. -Jodi DeBruyne, Curator of Collections & Exhibits

### RECENT ACQUISITIONS

2012.49	Victorian style loveseat & chair, donated by Virginia Donaldson	2013.07	Collection of 10 postcards, a Centennial belt buckle and Nugget Shop bag, donated by Barbara Dodd Shaffer
2012.50	1915 Edison phonograph with fifteen 80RPM records, donated by Don & Pat Ingledue	2013.08	Collection of photographs and other ephemera relating to William G. Brian Harland, donated by Patricia Harland Gaffney, Catherine Gaffney Eames-Jones, David Gaffney and Mildred Goss Jones
2012.51	1935 Douglas Bridge Sign, donated by Stanly Hubbard		
2013.01	Two Dale DeArmond Woodblocks, donated by Anne Kaill	2013.09	Photograph of congregation at Methodist Church c.1919, donated by Richard Kulaas
2013.02	"Alaska -- Where The Streets Are Paved With Mud" humorous postcard, donated by Jeff Brown	2013.10	Joseph Alexander Photographic Collection, transfer from the State Historical Library
2013.03	Painting of the 1935 Douglas Bridge by Ruth Read, donated by Ron Silva	2013.11	Joseph Alexander Photographic Collection, donated by Susan Derrera
2013.04	Collection of 14 prints from "The Hat Book" by Dale DeArmond, Museum purchase	2013.12	Juneau-Douglas Little Theatre Collection, donated by the Juneau-Douglas Little Theatre
2013.05	Photograph of the old Presbyterian Church	2013.13	"Our Town" pay book and performance program, donated by Bobby Lee Daniels
2013.06	1916 Winter & Pond of Juneau, donated by Bill Carland		



Photo Credit: 1935 Douglas Bridge by Ruth Read, oil on canvas, c.1970. Donated by Ron Silva.

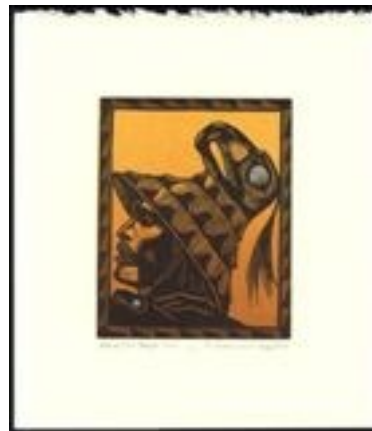


Photo Credit: *Mountain Eagle Hat*, edition 1/25, by Dale DeArmond. Wood engraving with colored pencil, hand pulled by artist in September 1994. This collection was purchased with the Juneau-Douglas City Museum's Juneau History & Art Acquisition Fund. JDCM 2013.04.001.



Photo Credit: Photograph of the old Presbyterian Church, c.1970, JDCM 2013.05.001.

## HEATING, HUMIDITY, AND VENTILATION UPGRADE PLANNING BEGINS

The Museum, along with the City Engineering department, have begun working with PDC Engineering and MRV Architects to finish mechanical planning for our heating, humidity, and ventilation upgrades to the Juneau Memorial Library building. Because the building is on the National Register of Historic Places and only 6000 sq. ft., we need to upgrade and install systems that will work well in our small interior spaces and will not

interfere with the building's exterior or small footprint, and be cost efficient and environmentally smart. The 1951 boiler will be replaced, having occupied prime real estate in the building for over sixty-two years. We are all curious to see how it will be extracted from the basement crypt that it inhabits. Contrary to many comments, we will not be accessioning it into the permanent collection. Planning will go on through the

summer with an anticipated construction start date of October 2013. This project will provide a museum quality environment for collections and exhibits, protecting our important Juneau history and culture collection, as well as providing a comfortable atmosphere for our visitors.



Photo Credit: 1951 Birchfield Boiler at the City Museum.

## JUNEAU-DOUGLAS CITY MUSEUM FRIENDS NEWS SUBMITTED BY FOJDCM DIRECTOR, JOEL PROBST

The past quarter has been an exciting one for the Friends of the Juneau-Douglas City Museum; launching a website, hosting and sponsoring events, funding the purchase of critical museum equipment and undertaking the establishment of an annual community get together. In an effort to expand our reach, we launched [juneaumuseumfriends.org](http://juneaumuseumfriends.org), highlighting our mission,

presenting unique Juneau-Douglas history and serving as a platform to engage our Members and the Juneau Community. When approached by the Museum with the goal of upgrading guest seating, the Friends answered by funding the entire purchase. In addition to hosting and sponsoring our traditional events, we are actively pursuing an annual affair, celebrating the unique

community traditions and customs endemic to the Juneau-Douglas area. Established to support, protect and promote the efforts, mission and desires of the Juneau-Douglas City Museum, we invite and encourage you to join in supporting our community memory; learn more at [juneaumuseumfriends.org](http://juneaumuseumfriends.org).

“IN AN EFFORT TO EXPAND OUR REACH, WE LAUNCHED [JUNEAUMUSEUMFRIENDS.ORG](http://JUNEAUMUSEUMFRIENDS.ORG), HIGHLIGHTING OUR MISSION, PRESENTING UNIQUE JUNEAU-DOUGLAS HISTORY AND SERVING AS A PLATFORM TO ENGAGE OUR MEMBERS AND THE JUNEAU COMMUNITY.”

## JUNEAU MEMORIAL BUILDING, PLANNING GRANT HISTORIC PRESERVATION FUND, CERTIFIED LOCAL GOVERNMENT GRANT

In August 2012, the Museum was awarded a \$6782 grant from the State Historic Preservation Office, Office of History and Archaeology, Alaska Division of Parks and Outdoor Recreation. This grant was awarded to the Museum to engage in adaptive re-use planning for the Juneau Memorial building. The Museum hired Ira Perman who has worked extensively with community groups in the State, and in Juneau, for decades. Perman traveled to Juneau from Anchorage for three days in October 2012 to hold a workshop with staff, volunteers, and museum supporters. He met with folks from the community resulting in a draft plan including strategic goals to connect collections, exhibits, and public outreach to historic preservation. We expect to share a draft of the plan with the community soon on our website.



Photo Credit: Exterior of the Juneau-Douglas City Museum.



Photo Credit: Mity-Lite folding chairs from Mity-Lite website.

## FRIENDS SUPPORT PURCHASE OF NEW MUSEUM CHAIRS

The Juneau-Douglas City Museum has been in need of new chairs for many years. Our current chairs used for programs, and watching our twenty-six minute long video, have been in service for over fifteen years. They have served us well but are heavy, difficult to stack, and cumber-

some to carry up and down the stairs for storage in the basement. The fabric is worn on many of the chairs and they are starting to fall apart! The Friends of the Juneau-Douglas City Museum have generously donated over \$3400 to purchase fifty-five new chairs with stacking

racks. These chairs are made of mesh material, light weight and easy to fold and stack. They will be much easier to carry up and down the stairs, and they will be very comfortable to sit in. We can't wait to have them arrive and start using them. Thank you Friends, we appreciate your support.



Photo Credit: Left: Old storage shelves in process of re-organization. Above Center: Old storage shelves in the process of the move. Below Center: New storage flat drawers. Above Right: flat drawers and large black storage cabinets in place. Below Right: New stacking trays.

“THE MUSEUM HAS CATALOGED 467 EDUCATION ITEMS INTO OUR COLLECTION SOFTWARE DATABASE SYSTEM.”

## ALASKA STATE MUSEUM GRANT-IN-AID UPDATE

Thanks to the Alaska State Museum grant-in-aid 2013 award, the Museum was able to hire contractor Brenda Wright to photograph and catalogue the 467 items in our education collection into our collections database, PastPerfect. This grant also allowed us to purchase new storage cabinets and archival boxes so that we can efficiently store the collection for protection and ease in retrieval. Now that we are able to query the collection through our collections database, we can look at its strengths and weaknesses, continue collecting certain subjects, and begin to look at crafting education kits, and education activities for classroom and Museum use. We look forward to introducing educators to our education collection and working on enhancing our offerings to the community.



THE JUNEAU-DOUGLAS  
CITY MUSEUM

Physical Address: 114 West 4th Street  
Juneau, AK 99801  
Mailing Address: 155 South Seward Street  
Juneau, AK 99801

Phone: 907-586-3572  
Fax: 907-586-4512

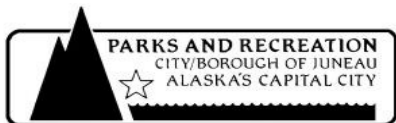
VISIT OUR WEBSITE AT  
[WWW.JUNEAU.ORG/PARKREC/MUSEUM](http://WWW.JUNEAU.ORG/PARKREC/MUSEUM)

**MEET OUR STAFF:**

**Jane Lindsey,**  
Director  
[Jane\\_Lindsey@ci.juneau.ak.us](mailto:Jane_Lindsey@ci.juneau.ak.us)  
907-586-0968

**Jodi DeBruyne,**  
Curator of Collections & Exhibits  
[Jodi\\_DeBruyne@ci.juneau.ak.us](mailto:Jodi_DeBruyne@ci.juneau.ak.us)  
907-586-0965

**Christina Bruce,**  
Museum Administrative Assistant  
[Christina\\_Bruce@ci.juneau.ak.us](mailto:Christina_Bruce@ci.juneau.ak.us)  
907-586-0967



155 So. Seward St., Juneau, AK 99801 (907) 586(3300) ext. 226

CITY MUSEUM  
SUMMER EVENTS CALENDAR

**MAY**

- 1 SUMMER HOURS AND SUMMER ADMISSION STARTS  
SEE BELOW FOR DETAILS
- 3 OPENING RECEPTION FOR DAN FRUITS: NEW  
WORKS, JEFF BROWN'S MASTERPIECES OF  
MERRIMENT, & FEATURED GIFT SHOP ARTIST THYES  
SHAUB FROM 4:30PM-7:30PM
- 6 & 14 HISTORIC DOWNTOWN WALKING TOUR WITH  
MARIE DARLIN, 5:30PM, STARTING AT THE MUSEUM
- 7 HISTORIC DOWNTOWN WALKING TOUR STARTS  
EVERY TUESDAY, WEDNESDAY, AND THURSDAY AT  
1:30PM
- 16 MINING LECTURE, *THE HISTORY OF HYDROPOWER IN  
JUNEAU* WITH SCOTT WILLIS 7:00PM AT THE MUSEUM
- 27 CITY MUSEUM CLOSED IN  
OBSERVANCE OF MEMORIAL DAY

**JUNE**

- 28 DEADLINE FOR JUNEAU HISTORY GRANT  
APPLICATIONS

**JULY**

- 4 THE JUNEAU-DOUGLAS CITY MUSEUM IS CLOSED IN  
OBSERVATION OF INDEPENDENCE DAY

**AUGUST**

- TBA JUNEAU EXPLORERS YOUTH PROGRAM, MONDAY-  
FRIDAY 12:30-4:30
- 12 2014/2015 SOLO ARTIST APPLICATION DEADLINE

**SUMMER HOURS**

May 1 - September 2013

**Mon -Fri 9am-6pm**  
**Sat -Sun 10am-5pm**

**Summer Admission:**

\$6 - 13 & older  
\$5 - Seniors, 65 & older  
Free -Youth 12 yrs. & younger

\$2 discount for National Trust  
Partner Places Participant

**\$20 for a season pass which  
allows unlimited visits for  
pass holder and guest**



Photo Credit: *Harnessing of the Atom Totem Pole* by  
Wallace Amos, JDCM 84.18.001.