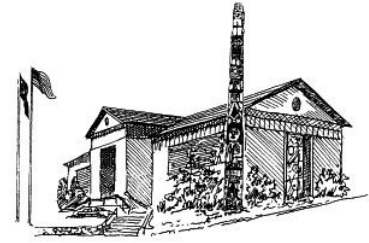


PAST & PRESENT

VOLUME 21, ISSUE 3

SEPTEMBER 2017



THE FOJDCM SUPPORT ACQUISITION OF *BEND IN THE RIVER*, BY SYDNEY LAURENCE



Bend in the River, by Sydney Laurence. JDCM 2017.45.001.

The Friends of the Juneau-Douglas City Museum recently won at auction *Bend in the River*, oil on canvas, 20"x24", by Sydney Laurence, 1865-1940. Laurence is widely regarded as Alaska's most prominent painter, famous for his many views of Denali and the Cook Inlet region. It is less widely known that Laurence visited and painted in Juneau, and his work was represented by Belle Simpson and the Nugget Shop. This landscape, painted in the flats near where the airport is located today, is a fine example of Laurence's work in our area, his skill, and his dedication to plein-air painting. *Bend in the River* will be on view at the Museum beginning with a First Friday Opening Reception on October 6th from 4:30-7:00pm and running through the end of October.

Bend in the River has been donated to the Juneau-Douglas City Museum in memory of William D. De Armond, who died in Seattle at the age of 79 on June 28, 2017. Bill is survived by his wife, Malin Babcock. Funds collected exceeded the purchase price of *Bend in the River*, and the Friends will dedicate any remaining funds to future Museum Juneau history and art acquisitions in his memory. Along with being a charter and ongoing current member of the Friends, Bill was also a major supporter of the Museum's objectives, notably, assistance in the Museum's project to realize his late father's Juneau-related work in digital form, "Digital Bob." This award-winning website enables keyword searches of Bob's Juneau history articles and can be accessed at <http://www.juneau.org/library/museum/bobhome.php>.

Bill's late mother, Dale DeArmond, had a strong association with the Museum, now located in our former library building. Bill donated Dale's Smith-Corona typewriter (JDCM2013.28.001) to the Museum. This typewriter was used during her twenty-five year tenure as city librarian, and gifted to her upon retirement in 1979. Coincidentally, the typewriter has been on exhibit since May, accompanied by a story written by Bill for our summer exhibit, *Stuff, Stories, and Sticky Notes*, up through October. Bill identified and donated to our 2009 acquisition, *Early Morning Juneau*, by Sydney Laurence, and also donated more than 100 items created by his artist mother to the Museum's collection.

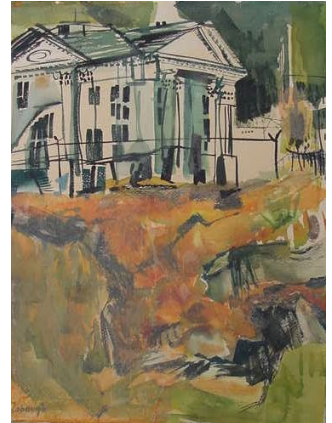
Donors to *Bend in the River* and the William D. De Armond Acquisition fund are: Malin Babcock, Ole & Sandy Bartness, John & Susan Bertholl, Mike Blackwell, Mary Borthwick & Robert Minch, Kathryn & Chuck Cohen, Cristine Crooks & Dean Guaneli, Elizabeth De Armond, Gwynne Dodge, Allen Dodworth, Joan Featherstone Case, Joe Garrett, Alan & Carolyn Gould, Anne Grisham Schultz, Don & Alma Harris, Mary Claire Harris, Paula Johnson, Elisabeth Lee, Jane Lindsey & Ross Soboleff, Jean McBrien, Doug & Shauna Murray, Marcia Phillips & Charlie Payne, The Probst Family, Judy Ripley, Tracy Sommers, Pierre & Jean Sundborg, Kirk Tousley, Katrina Woolford, Mary Pat Wyatt & Paul Voelckers.

The Friends of the Juneau-Douglas City Museum is a 501c3 organization dedicated to supporting the goals and activities of the Juneau-Douglas City Museum. More information can be found at www.JuneauMuseumFriends.org.

FALL/WINTER EXHIBITS SPOTLIGHT:

Art of Sharron Lobaugh

The family of Sharron Lobaugh (Nov 13, 1937 - Mar 13, 2017), with assistance from the City Museum, will be exhibiting some of Sharron's art this November. Sharron Lobaugh was a wife, mother of four, artist, teacher, and mental health advocate. As an artist, Sharron was known for her watercolor landscapes of Juneau and Southeast Alaska. After arriving in Juneau in 1962, Sharron painted, sold, and exhibited works, and was actively involved in the arts community. For several years, she was President of the Alaskan Arts and Crafts Inc. She chaired the 1967 Alaska Purchase Centennial Statewide Jury Exhibit, was appointed by Governor Hickel to the first Alaska State Council on the Arts, and was a founding member of the Friends of the Alaska State Museum. The exhibit will open with a First Friday Reception on November 3, 2017, and run through November 25th.



Old Jail (Courthouse) by Sharron Lobaugh.
Donated by Megan-Erin Ingle, JDCM 2005.42.001.

Mercedes Muñoz

Local potter and ceramics studio manager at the Canvas, Mercedes Muñoz will mount a solo artist exhibit at the City Museum during the month of December 2017. "She incorporates her love of drawing and sketching into her functional porcelain forms through the use of decals, gold luster, and china paints. Mercedes completed her BFA in Studio Arts with an emphasis in ceramics at Montana State University." The exhibit will open with a First Friday Reception on December 1, 2017, and run through December 30th.



Abel Ryan

Tsimshian carver Abel Ryan, born in Ketchikan, is a member of the wolf clan and a member of the Metlakatla Indian community. He studied carving with master carver Jack Hudson of Metlakatla and has a Bachelor of Arts degree from Sheldon Jackson College and a Native Arts Studio and Printmaking degree from the University of Alaska Fairbanks. He has been a practicing Northwest Coast artist for 30 years, wood and silver carving for over 25 years. Abel will be exhibiting work at the City Museum this winter. The exhibit will open with a First Friday Reception on January 5th, 2018, and run through February 24th.

"Killer Whale Wrap-Around Silver Ring", 2017, carved by Abel Ryan.
Purchase of this artwork has been made possible through the generous support of the Rasmuson Foundation Art Acquisition Fund. JDCM 2017.27.002.

14th Annual 12x12 Community Art Exhibit: "Seasons"

Each year the City Museum hosts a unique community art exhibit in which artists of all ages are encouraged to create works within the parameters of a square or a cube, measuring 12" x 12" (x 12") including the framing. For 2018, we encourage artists to create on the theme of "Seasons." Museum curator Jodi DeBruyne explains the choice for this year's theme: "During each year's exhibit, we offer the opportunity for artists and visitors to recommend future 12x12 themes and 'Seasons' has been mentioned a few times over the years. The theme lends itself to all artistic mediums and has a variety of meanings -- seasons of the year, seasons of life, the seasonings of cooking, TV series seasons, sports seasons -- that offer an abundance of creative opportunities for Juneau's artists." For an entry form and more information, visit: http://www.juneau.org/library/museum/exhibits_upcoming.php. The exhibit will open with a First Friday Reception on March 2, 2018, and run through Saturday, April 21st, 2018.



CONTINUING EXHIBITS:

Stuff, Stories, and Sticky Notes—ends October 30th

Eleven members of the Juneau community explored the City Museum's storage areas to find a utilitarian object from our Permanent Collection that stood out to them in one way or another. The Museum then asked them to write something about that object – fact or fiction, poetry or prose, it didn't matter. The eleven objects they chose and the stories they wrote are on view in the Murray Gallery. And if you think writing a story relating to a museum object sounds like fun, then you are in luck. The Museum has large sticky notes and a few additional objects from our Education Collection for you to use to add your story to the exhibit.



L.C. Smith Typewriter used by Dale DeArmond while head librarian at the Juneau Memorial Library. Donated by William D. De Armond. JDCM 2013.28.001.

It'ji Shaanáx: The Glowing Valley—through December 2017

It'ji Shaanáx (the glowing valley) is the Tlingit name for Perseverance Valley, located at the base of Mount Juneau, or yadaa.at kalé (beautifully adorned face). This exhibit looks at one of our most majestic landmarks, Mount Juneau, through art and recreation. Thirteen paintings and photographs featuring Mount Juneau are on view along with four pieces of hiking gear, all from the City Museum's permanent collection.

John Hyde Photographs—through December 2017

During the summer of 2015, the City Museum was able to purchase 14 photographic prints by John Hyde through the generous support of the Rasmuson Foundation Art Acquisition Fund. Hyde is a long-time Juneau resident and professional photographer who has spent his career working exclusively in the Tongass National Forest and Juneau. Seven of Hyde's photographs are on view in the Video Room Gallery.

FOJDCM RECEIVES GRANT FROM EMPTY CHAIR COMMITTEE TO FUND BUSING

The Friends of the Juneau-Douglas City Museum is honored to receive a donation of funds from the Juneau Community Foundation's Empty Chair Project Fund. This money will go toward providing buses for school groups to visit the Museum and learn about Juneau history. Teachers who wish to take advantage of this opportunity should schedule their tour through the Public Programs Coordinator by calling 586-0966, or filling out the Museum's online tour request form at: <http://www.juneau.org/library/museum/eduprograms.php>.

Margie Shackelford, Chair of the Empty Chair Project, commented, "The members of the Empty Chair Committee are pleased that we were able to donate the remainder of our funds to the Friends of the Juneau-Douglas City Museum for the purposes of providing bus transportation for student visits to the Museum. The City Museum has been a loyal partner in all that the Empty Chair Project has endeavored to accomplish. Educating our youth is high among our priorities. This includes the dramatic and varied history of the city of Juneau alongside the poignant story of the Empty Chair. We hope this gift provides additional motivation for student visits to the Museum over time and into the future for lessons focused on Juneau's past. A big thank you to the staff and leadership of the Museum for all they have done for us."



Members of the Empty Chair Project are shown at a Japanese American National Museum presentation in Los Angeles. L to R: Karleen Grummett, Mary Tanaka Abo, Marjorie Shackelford and Alice Tanaka Hikido. Photo courtesy of Karleen Grummett.

CITY MUSEUM PROGRAMS UPDATE



Kids from Discovery Southeast's Outdoor Explorer's Camp have fun with the Museum's new interactive fish fact panels. Photo courtesy of Discovery Southeast.

The City Museum had a very successful summer of new programs for the community, including once-a-month Family Days and special evening walking tours on the topics of geology, the Treadwell Complex, and Evergreen Cemetery. We plan to continue our special walking tour offerings next summer, in addition to the weekly downtown historic walking tours. We also hosted several education groups this summer, including Discovery Southeast camps on rocks and salmon, Glacier Valley RALLY, and students participating in Sealaska Heritage Institute's Math and Culture Academy.

As we head into fall, the Museum's popular Coffee and Collections series will start up again, and we will continue to offer Family Days periodically throughout the fall and winter. Some other events to look forward to in the coming season are: First Friday receptions, which will begin in October, an interactive exhibit at the Valley Library, and school tours. Teachers can find additional Museum resources at <http://www.juneau.org/library/museum/ResourcesforTeachers.php>.

The Museum is thankful to have received additional funding this summer from the Benito & Frances C. Gaguine Foundation, Michelle & Robert Storer, Alison E.

Browne, and the Friends of the Juneau-Douglas City Museum to allow us to increase operational hours and programming. The funding enabled the Museum to restore the public programs position, which was reduced two years ago due to City and Borough of Juneau budget cuts, to full-time, and to allow the Museum to open on Sundays from July-September 2017 and May-June 2018.

GIFT SHOP NEWS

We have some new and returning items at the City Museum Gift Shop, including a variety of pins and zipper pulls sourced locally from WM Spear Design. We also have reproduction Mining Tags on JDCM lanyards. We have signed copies of *When Sarah Palin Came to Town* by local artist and author Tony "TOE" Newman, and *Roadside Geology of Alaska, 2nd ed.* by Cathy Connor, as well as books by other local authors. Our featured Gift Shop artist is Thyes Shaub with her unique and beautiful necklaces and earrings. Please come by and check out our interesting and varied products, many from local artists!



Left: Jewelry by Thyes Shaub.
Above: books by local authors.
Right: Pins and zipper pulls by WM Spear Design.



Alaska: Portrait of an Artist, by Robert Jones Sage III, oil on canvas, 2013. Private collection, image courtesy of the artist.

NEW ADMINISTRATIVE ASSISTANT

The Juneau-Douglas City Museum welcomed Amanda Neyenhouse as our new administrative assistant in May. Neyenhouse says, "I am so excited to have joined the team here at the City Museum. I originally moved to Juneau in early 2005 to spend a year as an Americorps volunteer with SAGA. I fell in love with our town and decided to move here permanently at the end of my term with Americorps. I have always had a great appreciation for art and history, and Juneau is full of both. I did spend a few years 'down South' to complete my post secondary education, which was strongly based in both art history and studio art. After earning my BA, I returned to Juneau and have been enjoying the beauty and culture of town since. I look forward to continuing to learn more about our fine city and also seeing many familiar and new faces here at the Museum. Please feel free to contact me by email at amanda.neyenhouse@juneau.org or by phone at 586-0967."

MUSEUM VOLUNTEER NEWS

The City Museum is excited to welcome the following new volunteers:



Donna Hurley

Donna has been a Juneau resident since 1960, and she has been involved in volunteer work since 1968. She is an active member, as well as the club president, of Mendenhall Flying Lions. This is her first year as a volunteer at the City Museum. Donna started with us by working on a research project for the Museum to secure a loan of the USS *Juneau CL-52* Presentation Silver from the US Navy. We are very happy to have Donna as part of the team; her skills and vast knowledge of Juneau and its history are a great asset to the Museum.



Kirk Smith

"I am very happy to be a volunteer at the Juneau-Douglas City Museum. I recently retired from the U.S. Department of State where I was a Foreign Service Officer assigned to various U.S. Embassies and Consulates in Europe and the Middle East. Now I enjoy a quieter life in Juneau, and I thank you, the staff and volunteers at JDCM for giving me an opportunity to use my skills and talents in such a wonderful environment!"



Gail Dahl

Gail Dahl lived in Juneau originally from 1966 to 1971, during which time she worked at St. Ann's Hospital. She returned to Juneau in 1994 and has been a resident ever since. Gail made her career as a Registered Nurse and is newly retired from SEARHC. She has decided to spend her newfound free time to volunteer with various groups in Juneau. This is Gail's first summer at the Museum.

Have you considered become a City Museum volunteer? Our dedicated volunteers provide local perspectives for our out-of-town visitors during the busy summer and winter seasons, and we are so grateful to each and every one for all of their help. We are always interested in speaking with those that are looking for a volunteer opportunity. To volunteer with us, you don't have to be an expert on Juneau-Douglas history. Having an interest in preserving the history of Juneau-Douglas and the willingness to share information with both locals and visitors is a wonderful start. Between our current volunteers, staff, and resources available at the Museum, there is a wealth of knowledge available. If you or anyone you know is interested in becoming a volunteer at the Museum, please contact Amanda Neyenhouse at amanda.neyenhouse@juneau.org or call 586-0967.

RECENT ACQUISITIONS (APRIL-EARLY AUGUST 2017)

- 2017.13 2017 Folk Fest Pin donated by Ross Soboleff
- 2017.14 Two 1967 Tourism Brochures donated by Michelle and Jon Weaver
- 2017.15 Nine historical postcards donated by Joe Geldhof
- 2017.16 Book from the Treadwell Club Library donated by Garrett Smithberg
- 2017.17 Pressure Cooker used for Canning donated by Roberta Stell
- 2017.18 Koozie & business card from Barnaby Brew. Staff Collect.
- 2017.19 Dudley's Alaska Flower Picture Art donated by Terry Brenner
- 2017.20 Girl Scout Uniform and Photographs donated by Mary Lou Spartz
- 2017.21 "Civil Obedience" by an anonymous donor
- 2017.22 Original JDCM Blueprints donated by Jensen, Yorba, & Lott Inc.
- 2017.23 Photographs donated by Peggy Chaplin
- 2017.24 City Dry Cleaners Hanger donated by Bobby Lee Daniels
- 2017.25 13 Folk Festival Programs donated by the Folk Fest Board
- 2017.26 Pin and Box from Bloedhorn Jewelry donated by Sulynn Moore
- 2017.27 Killer Whale Silver Ring and Cedar Paddle by Abel Ryan. Purchase of this artwork has been made possible through the generous support of the Rasmuson Foundation Art Acquisition Fund.
- 2017.28 Portrait Doll of Elizabeth Peratrovich by Mary Ellen Frank. Purchase of this artwork has been made possible through the generous support of the Rasmuson Foundation Art Acquisition Fund.
- 2017.29 Records from Dr. Jenne's Dental Practice donated by the Crystal Snow Jenne and Corrinne Jenne Kenway families.
- 2017.30 Douglas related photographs and ephemera donated by Linda and Dennis Wahto
- 2017.31 1969 Juneau Map transferred from the Juneau Public Library
- 2017.32 Mining artifacts donated by David and Laurel Stone
- 2017.33 Hawthorn Bowl donated by Kevin Miller
- 2017.34 Photos and Club Memorabilia donated by Frank Harju
- 2017.35 Juneau Public School Dessert Plate donated by Elisabeth Lee
- 2017.36 Promotional Foam Hammer donated by Ross Soboleff
- 2017.37 Drawings of the Seward Statue donated by the Seward Statue Committee
- 2017.38 1980s photographs and ephemera donated by Margery Welker
- 2017.39 4th of July and 150 Purchase event ephemera. Staff Collect.
- 2017.40 Photographs and other historical ephemera donated by Diane DeWitt
- 2017.41 1988 Town Portrait by Ron Klein donated by Sharon Baker
- 2017.42 26 local campaign buttons donated by Peter Freer
- 2017.43 Two historical postcards donated by Joe Geldhof
- 2017.44 Amalga Distillery mug, glass, and menu. Staff Collect.
- 2017.45 *Bend in the River*, by Sydney Laurence. Donors to this acquisition and the FojDCM William D. De Armond Acquisition fund are: Malin Babcock, Ole & Sandy Bartness, John & Susan Bertholl, Mike Blackwell, Mary Borthwick & Robert Minch, Kathryn & Chuck Cohen, Cristine Crooks & Dean Guaneli, Elizabeth De Armond, Gwynne Dodge, Allen Dodworth, Joan Featherstone Case, Joe Garrett, Alan & Carolyn Gould, Don & Alma Harris, Mary Claire Harris, Paula Johnson, Elisabeth Lee, Jane Lindsey & Ross Soboleff, Jean McBrien, Doug & Shauna Murray, Marcia Phillips & Charlie Payne, The Probst Family, Judy Ripley, Anne Grisham Schultz, Tracy Sommers, Pierre & Jean Sundborg, Kirk Tousley, Katrina Woolford, Mary Pat Wyatt & Paul Voelckers.



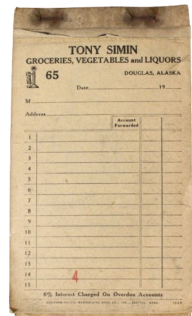
Barnaby Brewing Koozie, JDCM 2017.18.001



Killer Whale Silver Wrap-Around Ring, by Able Ryan, JDCM 2017.27.002



Tlingit Civil Rights Activist: Portrait Doll of Elizabeth Wanamaker Peratrovich, by Mary Ellen Frank, JDCM 2017.28.001



Receipt Book from Tony Simin Groceries, Vegetables, and Liquors, JDCM 2017.30.002



Turned Bowl with Silver Lid, made from the Hawthorne tree formerly on JDCM grounds, by Kevin Miller, JDCM 2017.33.001A-B



"Build the Statue!" Foam Hammer, advertising campaign to build the William Seward Statue JDCM 2017.36.001



Physical Address:

114 West 4th Street
Juneau, AK 99801

Mailing Address:

155 South Seward Street
Juneau, AK 99801

Phone: 907-586-3572

Fax: 907-586-4512

VISIT OUR WEBSITE AT

[WWW.JUNEAU.ORG/
LIBRARY/MUSEUM](http://WWW.JUNEAU.ORG/LIBRARY/MUSEUM)

JDCM STAFF:

Jane Lindsey

Director
jane.lindsey@juneau.org
907-586-0968

Jodi DeBruyne

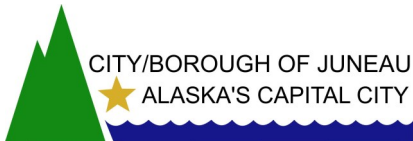
Curator of Collections & Exhibits
jodi.debruyne@juneau.org
907-586-0965

Kaia Henrickson

Curator of Public Programs
kaia.henrickson@juneau.org
907-586-0966

Amanda Neyenhouse

Administrative Assistant
amanda.neyenhouse@juneau.org
907-586-0967



JUNEAU-DOUGLAS CITY MUSEUM UPCOMING EVENTS CALENDAR

SEPTEMBER

HISTORIC WALKING TOURS TUES/WED/THURS 1:30PM-3:00PM

- 4 CLOSED FOR LABOR DAY
- 9 EVERGREEN CEMETERY WALKING TOUR WITH MARIE DARLIN, 1:00-2:30PM
- 17 FAMILY DAY, 1:00-3:00PM, FREE ADMISSION FOR ADULT ACCOMPANIED BY CHILD
- 21 LAST HISTORIC DOWNTOWN WALKING TOUR FOR THE SUMMER
- 28 BEGIN WINTER HOURS (TUES-SAT 10AM-4PM)
- 30 LAST CRUISE SHIP IN

OCTOBER

- 6 FIRST FRIDAY OPENING RECEPTION: *BEND IN THE RIVER*, BY SYDNEY LAURENCE, 4:30-7:00PM
- 7 COFFEE & COLLECTIONS: HISTORY OF THE JUNEAU GARDEN CLUB, 2:00-4:00PM
- 12 FAMILY NIGHT, 5:30-7:00PM
- 18 CLOSED FOR ALASKA DAY

NOVEMBER

WRITE LETTERS OF THANKS & GRATITUDE IN HONOR OF DR. WALTER SOBOLEFF, FREE CARDS & POSTAGE AT THE MUSEUM

- 3 FIRST FRIDAY RECEPTION: *ART OF SHARRON LOBAUGH*, 4:30-7:00PM
- TBD COFFEE & COLLECTIONS
- 10 CLOSED FOR VETERAN'S DAY
- 14 DR. WALTER SOBOLEFF DAY
- 15 FAMILY NIGHT, 5:30-7:00PM
- TBD LT. KRIS SELL PRESENTS ON THE JPD 2017 YEAR OF KINDNESS
- 23-24 CLOSED FOR THANKSGIVING

DECEMBER

- 1 GALLERY WALK FIRST FRIDAY RECEPTION: MERCEDES MUÑOZ, 4:30-7:00PM
- 25 CLOSED FOR CHRISTMAS

MUSEUM HOURS

SEPTEMBER 1-27:

Mondays—Fridays: 9am-6pm
Saturdays & Sundays 10am-4:30pm

SEPTEMBER 28—APRIL 30:

Tuesdays—Saturdays 10am-4pm

ADMISSION: SEPTEMBER

\$6.00 General Admission (ages 13 and older)
\$5.00 Seniors
FREE Ages 12 and younger

ADMISSION: OCTOBER—APRIL

FREE thanks to generous donors

BECOME A FRIEND and receive Museum benefits —

juneaumuseumfriends.org



Like & follow us on Facebook at

www.facebook.com/JuneauMuseumFriends



JunEAU-Douglas City Museum

155 South Seward St.

JunEAU, AK 99801