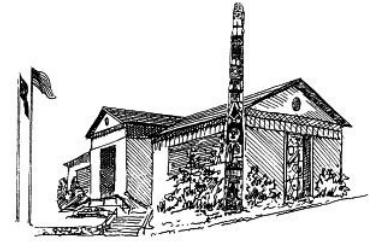


PAST & PRESENT

VOLUME 21, ISSUE 2

MAY 2017



WHY THE CITY MUSEUM MATTERS

Here in Juneau, as a community, we have the ability to preserve our legacy for thoughtful interpretation, open critique, and public conversation. We create history every day, and the City Museum collects, preserves, and interprets it. The Juneau-Douglas City Museum is just that, Juneau-Douglas. While other institutions may collect some Juneau-Douglas history, only the City Museum exclusively collects and preserves our stories. Each year, the Museum accepts about 400 objects and preserves them in public trust.

The Museum's public programs coordinator works with over 4,000 visitors a year to offer education tours, public programs, and artist openings so that we can enjoy new exhibits and discussion around Juneau history and art. 25 volunteers lend over 2,500 hours of service a year, so we can keep the Museum open as much as possible. Donors pay public admission fees from October to April, so everyone can visit the Museum and be in our historic downtown.

For those who can't visit in person, the Museum offers Juneau History Research and online collections at www.juneau.org/library/museum, as well as weekly Facebook posts that highlight objects from the collection. The Museum also travels portions of its exhibits to our three public libraries to make them available to everyone.

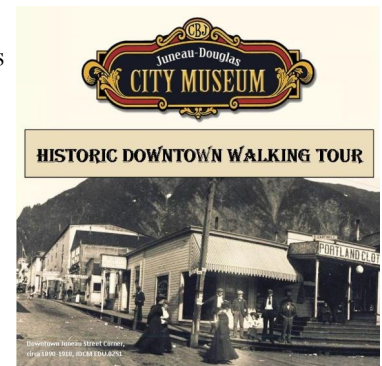
The Friends invite you to support the City Museum, learn more about our goals and accomplishments, and subscribe to "News on the Channel" our monthly e-flyer at www.JuneauMuseumFriends.org, or contact us by email at friendsjdc@gmail.com.

Joel Propst, President
Friends of the Juneau-Douglas City Museum

HISTORIC DOWNTOWN WALKING TOURS START IN MAY

Discover downtown Juneau's past through a unique walking tour led by a local guide, whose perspective and experiences lend color and flavor to Juneau's story. These tours are great for locals and visitors alike to learn about the history and the changing landscape of downtown Juneau, and hear tales of prominent Alaskan figures and Juneau families. Tours last approximately one and a half hours and include admission to the City Museum, a 20% discount in the Museum's gift shop, and tea time at Alaska's Capital Inn, the restored gold rush era home of John Olds. Walks take place rain or shine, and involve moderate activity, including stairs and inclines.

Tours run from May 9th to September 21st on Tuesdays, Wednesdays, and Thursdays beginning at 1:30pm at the City Museum. We will also be offering one-time evening tours on Wednesday, May 10th from 5:30-7:00pm with Mike Blackwell, and on Thursday, May 11th from 6:00-7:30pm with Brenda Wright. The cost is \$25 for adults and \$20 for ages 12 & under. Reservations are recommended, and tickets can be obtained at the Museum, through the Museum's website <http://www.juneau.org/library/museum/walkingtour.php>, or at the JAH. (Tickets for the two evening tours may only be purchased at the Museum.)



SUMMER EXHIBITS SPOTLIGHT:



Black Cubic Metal Duck Hunters Stool. Donated by Mary Ann Parke, JDCM 2002.11.109.

Stuff, Stories, and Sticky Notes

Eleven members of the Juneau community have explored the City Museum's storage areas to find a utilitarian object from our Permanent Collection that stood out to them in one way or another. The Museum then asked them to write something, anything, about that object – fact or fiction, poetry or prose, it didn't matter. The eleven objects they chose and the stories they wrote will be on view in the Murray Gallery this summer. And if you think writing a story relating to a museum object sounds like fun, then you are in luck. The Museum will be providing large sticky notes and a few additional objects from our Education Collection for you to use to add your story to the exhibit. *Stuff, Stories, and Sticky Notes* will open with a First Friday Reception on May 5th and run through the end of October 2017.

It'ji Shaanáx: The Glowing Valley

It'ji Shaanáx (the glowing valley) is the Tlingit name for Perseverance Valley, located at the base of Mount Juneau, or yadaa.at kalé (beautifully adorned face). This exhibit looks at one of our most majestic landmarks, Mount Juneau, through art and recreation. Thirteen paintings and photographs featuring Mount Juneau are on view along with four pieces of hiking gear, all from the City Museum's permanent collection. The exhibit will be up through the end of 2017.



Pair of Insulated Rubber Mountaineering Boots. Donated by the Juneau Icefield Research Project, JDCM 2003.39.011 A-B.



Ibara no Michi (Pathway of Thorns), by Fumi Matsumoto, JDCM 2016.10.002.

Art of Fumi Matsumoto

Fumi Matsumoto is a local Japanese-American artist. Much of her art "reflects the Japanese aesthetic and often the Japanese American experience." Her art was featured in the City Museum's 2014 summer exhibit, *The Empty Chair: The Forced Removal & Resettlement of Juneau's Japanese Community, 1941-1951*. Thanks to the Rasmuson Foundation Art Acquisition Fund, the City Museum has added three mixed media art pieces by Matsumoto to our Permanent Collection, which are on display in our entry way case through the end of June 2017.

John Hyde Photographs

During the summer of 2015, the City Museum was able to purchase 14 photographic prints by John Hyde through the generous support of the Rasmuson Foundation Art Acquisition Fund. Hyde is a long-time Juneau resident and professional photographer who has spent his career working exclusively in the Tongass National Forest and Juneau. Seven of Hyde's photographs are on view in the Video Room Gallery through the end of 2017.



Low Tide at Eagle Beach, October 2013, photograph by John Hyde. Purchase of this artwork has been made possible through the generous support of the Rasmuson Foundation Art Acquisition Fund, JDCM 2015.20.003.

SPRING BREAK CAMP WITH DISCOVERY SOUTHEAST



This year, the City Museum partnered with Discovery Southeast to provide a spring break camp for children in grades 2-5. The theme for the week was “discovering Juneau past and present.” Each day, the group focused on a different location in Juneau: the Mendenhall Glacier, Auke Recreation Area, Treadwell Ditch/Mt. Jumbo, Downtown Juneau, and Treadwell Historic Park. Kids explored the outdoors in each area and also learned about the area’s history through photographs, films, stories, and activities.

Thanks to our spring snowfall, the kids’ favorite activity, which they managed to accomplish at almost every site, was building snow forts. They also built “mines” in the sand at Sandy Beach and channeled in water to simulate the Treadwell cave-in, learned about the Tlingit history at Auke Recreation Area through a filmed interview with Ed Kunz, interacted with historic mining through the hands-on mining room at the Museum, and walked the original shoreline of downtown Juneau. Overall, the camp was a big success, and we hope to continue the partnership for future programs.



MUSEUM GIFT SHOP

Come visit our gift shop, where you will find a great variety of books, jewelry, and art by local authors and artists. We also feature unique art cards and gift items, such as coasters, wine stoppers, luggage tags, and much more.



1867-2017: 150 YEARS OF CHANGE
ÁAK'W AANI (SMALL LAKE TRIBE LAND) AT THE TIME OF PURCHASE

May 4th, 6:30-8:00pm at the Juneau Arts and Culture Center
Sponsored by the Friends of the Juneau-Douglas City Museum

Last year, Governor Bill Walker issued a proclamation designating 2017 as a “Year of History and Heritage” in recognition of Alaska’s sesquicentennial, the 150th year since Russia ceded its possessions and interests in Alaska to the United States. Governor Walker’s proclamation encouraged all Alaskans “to study, teach, reflect upon our past, and apply its lessons to a brighter, more inclusive future.” At the time of this transaction, Russian trade settlements were anchored in the Aleutian Islands and Sitka, and the Juneau area was relatively isolated from outside influence. It is estimated that in 1879 there were only 239 white residents in Alaska, located mainly in Sitka and Wrangell.

When the Museum was approached and asked to participate in this anniversary, we asked ourselves, “What did this area look like 150 years ago, who lived here, and how has the land changed?” The Friends of the Juneau-Douglas City Museum stepped in to help us answer these questions by funding an exciting project with naturalist and co-founder of Discovery Southeast, Richard Carstensen. Please join the City Museum at the Juneau Arts and Culture Center, Thursday, May 4th at 6:30 pm, for a free presentation by Richard Carstensen to learn about the land we live on, celebrate Juneau’s original inhabitants, and reflect on how this area has changed through time.

COLLECTIONS CORNER: PERMANENT GALLERY UPDATES

At the City Museum we are always trying to improve our exhibits to enhance the visitor experience. Part of my job as Curator of Collections and Exhibits is to look both at the galleries and our collection and figure out how best to get more of our collection out on view, and how to make the most of our small space. It is impossible to cover every detail of the Juneau-Douglas region’s history and culture, but we do our best to cover as much of it as possible and be inclusive. For over a year now, you’ve read articles by me and Jane about changes to the permanent galleries – new carpet, removing old cases, getting new cases, and, of course, new exhibits. This summer you’ll see old mining favorites in new cases in the Hands-On Mining Gallery, a new Juneau Businesses curio cabinet, a new, expanded fishing exhibit, and a many smaller additions to enhance existing exhibits.

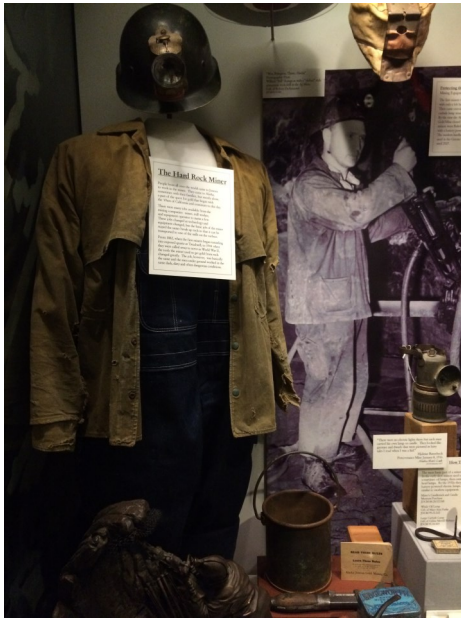
And we aren’t done yet. Over the summer I’ll get to work on the other updates we have planned for the General History and Hands-On Mining Galleries, including an expanded Melting Pot exhibit, a new maritime exhibit, and a “Become A Miner” dress up cabinet. The Museum staff and I are very excited for all of these changes and hope that you are able to stop by the City Museum, learn something new about your community, draw strength and perspective from the past, and find purpose for the future.

Jodie DeBruyne



COLLECTIONS CORNER CONTINUED

The Run Down of the permanent gallery changes you'll see when visiting this summer:



Hands-On Mining Gallery: Assay Lab & Hard Rock Mining Exhibits.

The Assay Lab exhibit has been in the General History Gallery since 2010 and the Hard Rock Mining Exhibit was there 2008-2015. As part of this update, we wanted to realign the galleries and put all the mining exhibits in one place in order to give visitors a better understanding of mining life in Juneau. With the addition of two new, modern, museum-quality cases, those exhibits are now both in the Hands-On Mining Gallery. Other smaller additions and changes include: a digital frame of miner photos, two life-sized miners to greet you at the entrance, and the stamp mill replica in a new location.

General History Gallery: Businesses.

If you remember back in the fall of 2015, the General Store exhibit was taken down after 20+ years on view. With its many objects, we know it was a favorite exhibit of locals, visitors, and staff, so we only took it down knowing we were going to re-envision it to highlight Juneau businesses. The new Businesses exhibit has over 175 objects in the new case, plus signs on the walls above, and a small wall-case of matchbooks. All of these items represent Juneau local businesses and industries, past or present, including dairies, airlines, stores, police & fire, native curio trade, banks, and more. Historical information is paired with the invitation to play a few rounds of I-Spy to see if you can find all the objects relating to a specific type of business.

Politics Gallery: New "Button Pole".

We've taken the utility pole that runs through the Politics Gallery and, with the help of local contractors, turned it into exhibit space for 277 campaign buttons from the City Museum's collection. These buttons are from local, state, and national campaigns and add a little extra "flare" to the gallery. Stop by and see how many names you recognize.



General History Gallery: Fishing.

In the fall of 2016, our angling artifacts exhibit was taken down. Again, we did so with the knowledge that we would be creating a new fishing exhibit. The new exhibit has combined the already existing Montana Creek Fish Trap exhibit with history about Tlingit fishing methods, recreational fishing in Juneau, and the commercial fishing industry. This exhibit will continue to be worked on throughout the summer, with a new case to display fishing artifacts, including a halibut hook, cannery labels, and Salmon Derby buttons, being installed mid-summer. Also coming this summer are life-sized "fish fact" fish panels for the five species of salmon, halibut, herring, and eulachon. Be sure to take a photo holding your favorite fish and share it with us on the Friends of the Juneau-Douglas City Museum's Facebook page:

<https://www.facebook.com/JuneauMuseumFriends/>.

RECENT ACQUISITIONS

- 2016.27 First gram of legally sold cannabis from Rainforest Farms, donated by James Brooks
- 2016.28 *Chilkat Mountains*, painted and donated by Dan Fruits
- 2016.29 Justin Parish Political Button, donated by Brenda Wright
- 2017.01 Local business ephemera, donated by June Hall
- 2017.02 Local campaign and business pin back buttons, donated by Susan Baxter
- 2017.03 Vintage tourism brochures, donated by Mike Blackwell
- 2017.04 Two historical postcards, donated by Vienna Wolder
- 2017.05 *Untitled (1935 Douglas Bridge)* by Jennie Werner, donated in memory of Kathy Orme Hildre
- 2017.06 *P.H. Fox, Douglas Plate*, donated by the Shrine of St. Therese
- 2017.07 Five historical postcards, donated by Joe Geldhof
- 2017.08 One Egan campaign brochure, donated by Jay Nelson
- 2017.09 Two WWII Brochures, donated by Anne Schultz
- 2017.10 Eleven historical postcards, donated by Joe Geldhof
- 2017.11 Baseball style cap advertising Taguchi's Fine Chow, donated by Thomas Hara
- 2017.12 Eight color photographic prints by Michael Penn, photographer for the Juneau Empire, during the Women's March and the Immigration Ban Protest. Museum purchase.



Untitled (1935 Douglas Bridge),
JDCM 2017.05.001



Taguchi's Fine Chow Hat,
JDCM 2017.11.001



P.H. Fox, Douglas Plate,
JDCM 2017.06.001

MUSEUM VOLUNTEERS NEEDED

Are you looking for a volunteer opportunity that will allow you to share your knowledge and love of Juneau with visitors and locals alike? The City Museum has a very small staff and we rely heavily on our volunteers to greet and help our guests. Volunteers are the heart and the face of the City Museum. They are encouraged to engage all of our visitors and answer any questions they may have on Juneau history and culture. You don't have to be a local expert in order to volunteer. There are plenty of tools, publications, and staff to help answer any questions you, or a visitor, may have. If you are interested in donating some of your time to support the preservation of Juneau's culture and local history, please contact Lisa Manning at lisa.manning@juneau.org or call at 586-0967.



Physical Address:

114 West 4th Street
Juneau, AK 99801

Mailing Address:

155 South Seward Street
Juneau, AK 99801

Phone: 907-586-3572

Fax: 907-586-4512

VISIT OUR WEBSITE AT

[WWW.JUNEAU.ORG/
LIBRARY/MUSEUM](http://WWW.JUNEAU.ORG/LIBRARY/MUSEUM)

JDCM STAFF:

Jane Lindsey

Director
jane.lindsey@juneau.org
907-586-0968

Jodi DeBruyne

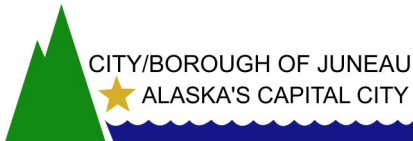
Curator of Collections & Exhibits
jodi.debruyne@juneau.org
907-586-0965

Kaia Henrickson

Curator of Public Programs
kaia.henrickson@juneau.org
907-586-0966

Lisa Manning

Administrative Assistant
lisa.manning@juneau.org
907-586-0967



JUNEAU-DOUGLAS CITY MUSEUM UPCOMING EVENTS CALENDAR

MAY

PAID ADMISSION TO THE MUSEUM BEGINS, THROUGH SEPT.

- 4 1867-2017: 150 YEARS OF CHANGE, PRESENTATION BY RICHARD CARSTENSEN, 6:30-8:30 AT THE JACC, FREE, SPONSORED BY THE FRIENDS OF THE JUNEAU-DOUGLAS CITY MUSEUM. FREE.
- 5 FIRST FRIDAY OPENING RECEPTION: STUFF, STORIES, AND STICKY-NOTES, 4:30-7PM. FREE.
- 9 HISTORIC WALKING TOURS BEGIN EVERY TUES/WED/THURS FROM 1:30PM-3:00PM
- 10 EVENING HISTORIC WALKING TOUR: 5:30-7:00PM WITH MIKE BLACKWELL
- 11 EVENING HISTORIC WALKING TOUR: 5:00-6:30PM WITH BRENDA WRIGHT
- 29 CLOSED FOR MEMORIAL DAY

JUNE

HISTORIC WALKING TOURS TUES/WED/THURS 1:30PM-3:00PM

- 30 JUNEAU HISTORY GRANT APPLICATIONS DUE

JULY

HISTORIC WALKING TOURS TUES/WED/THURS 1:30PM-3:00PM

- 4 CLOSED FOR INDEPENDENCE DAY HOLIDAY—NO WALKING TOUR

AUGUST

HISTORIC WALKING TOURS TUES/WED/THURS 1:30PM-3:00PM

SEPTEMBER

HISTORIC WALKING TOURS TUES/WED/THURS 1:30PM-3:00PM

- 4 CLOSED FOR LABOR DAY
- 21 LAST WALKING TOUR FOR THE SUMMER
- 28 BEGIN WINTER HOURS (TUES-SAT 10AM-4PM)
- 30 LAST CRUISE SHIP IN

HOURS MAY—SEPTEMBER:

Mondays—Fridays: 9 am - 6 pm
Saturdays 10 am - 4:30 pm
Closed Sundays

BECOME A FRIEND and receive
Museum benefits —

juneaumuseumfriends.org

ADMISSION MAY through SEPTEMBER

\$6.00 General Admission (ages 13 and older)
\$5.00 Seniors
FREE ages 12 and younger

ANNUAL PASS: \$25.00
Unlimited visits for pass holder & guest

BLUE STAR MUSEUM—Free admission for active duty
military and up to 5 family members



JunEAU-Douglas City Museum

155 South Seward St.

JunEAU, AK 99801