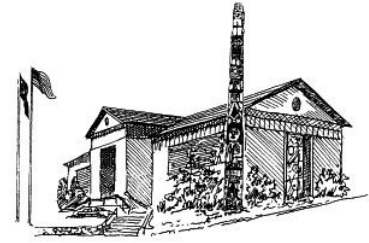


# PAST & PRESENT

VOLUME 20, ISSUE 1

JANUARY 2016



## KINETIC: A SOLO EXHIBIT OF PAINTINGS BY AVERY SKAGGS



A painting by Avery Skaggs, to be included in his upcoming exhibit, *Kinetic*.

Avery Skaggs's work is about capturing the expression of his movement through different art mediums. His solo painting exhibit, titled *Kinetic*, will be on display at the Museum in the Murray Gallery during the month of February 2016. Skaggs, a REACH client who works through the Canvas Art Studio and Gallery, experiences cerebral palsy and is quadriplegic. He is supported in his art making by the staff there who provide the materials and tools to facilitate his process. The goal of Avery's support team is to ensure that the final pieces capture the exuberance and immediacy of his mark making.

Avery was born and raised in Juneau and began exploring paint as soon as he could sit upright, an undertaking he has continued throughout his life. Since joining the Canvas in 2009, he has explored many mediums, including paint, glass, monoprints, and ceramics. His style has evolved and become more dynamic as the staff have learned how best to capture his movement. Avery has shown work many times in a gallery setting. Not only has he had a solo show at the Canvas, *Synergy* in 2010, but he has shown at many Canvas group shows as well. Most notably, Avery showed two of his ceramic platters in a REACH Artist group show at the Alaska State Museum from May through October of 2013 and had a solo show of his acrylic paintings, *Synergy II*, in December 2014 at the Juneau Arts and Culture Center.

The work on display in the Museum exhibit is an exploration of Avery's mark making. The intent is to capture his kinetic movement and his physical expression through mediums both subtle and bold. Each piece engages Avery's energy which is at times close and contained to small hand gestures and at other times broad and reaching, sweeping across the canvas. The final outcome is a representation of Avery's physical presence as captured over the course of days and months of work on each piece.

The opening reception for *Kinetic* will be on Friday, February 5th from 4:30-7:00pm. The exhibit will be on view through Saturday, February 27, 2016. Avery and his support team will do a talk on the topic of his art making and life as an exhibiting artist on Saturday, February 20th, 10:30 am to noon.

## INTRODUCING "DIGITAL BETTY"

The City Museum is pleased to announce that "Digital Betty" now lives on our website. "Digital Betty" consists of the six volumes of vital records compiled by local genealogist and former Museum volunteer, Betty Miller. Betty is a born and raised Juneauite. She graduated from Juneau High School in 1955 and worked for the U.S. Forest Service until retiring in the 1970s. After researching her own family, Betty spent fifteen years combing through newspapers, mainly the Alaska Daily Empire, to make these lists of birth, death, marriage, divorce, anniversary, and christening announcements. The vital records date between 1898 and 1936.

These records have long been available as paper volumes; we have copies here at the City Museum. Now Betty, with special thanks to Mike Blackwell, has taken those paper records and turned them into searchable PDF documents. "Digital Betty" is an exciting addition to the research resources available on the City Museum's website. Check them out here: [www.juneau.org/library/museum/bettyhome.php](http://www.juneau.org/library/museum/bettyhome.php).



JDCM 2013.10.00084 B  
School Portrait of Betty (West) Miller, photograph taken by Joseph Alexander. Transferred from the ASHL, JDCM 2013.10.00084B.

## REPORTING ON RECENT GRANT-FUNDED ACTIVITIES

### Totem and Canoe Assessment

The 40' Wooshkeetaan Totem Pole, which has been standing proudly outside Centennial Hall for the past 32 years, has been in the City Museum's collection since 1981. In September 2015, thanks to a Collections Management Grant from Museums Alaska, we were able to bring master carver Steve Brown to Juneau to assess the condition of the pole and provide recommendations on its care.

Nathan Jackson (Klukwan) assisted by Brown with painting by Dorica Jackson won a commission from the Juneau Centennial Committee in 1981 to carve two totem poles to celebrate Juneau's 100 year anniversary. Painted in traditional colors of black, red and blue-green, the Wooskeetaan pole commemorates the (shark) Eagle Clan, members of the Aak'w Tribe, Juneau's original inhabitants. Ten figures represent elements of the clan's history. It was erected in 1983 outside Centennial Hall, on the waterfront in downtown Juneau. Its companion, the Auk Pole (JDCM 81.01.033) commemorating the Raven Clan of the Aak'w Tribe, was also erected outside Centennial Hall in 1983 but has since been moved inside the Juneau-Douglas High School atrium.

During his visit, Brown examined the front and back of the pole from top to bottom and concluded that it is suffering from severe erosion, the growth of moss and lichen, and paint flaking as a result of 30+ years of exposure to the elements. Brown stated, "Removal of the pole from its current location may be the best long-term option for its survival." Based on his recommendations, the pole has been taken down and is being stored inside to dry, be cleaned and treated, and will remain there until a suitable indoor home is found. The Wooshkeetaan Pole is a beloved community landmark and we all will miss seeing it outside Centennial Hall.

Brown also examined the Museum's early-1900s 16' Tlingit Dugout Canoe made of spruce (JDCM 94.46.001) to assess its condition and stability in regards to changing the mounting position. Brown's assessment indicated that "the spruce wood of which the hull is carved has sufficient structural integrity to support the weight and three-dimensional form of the hull in either orientation, upside or down." This January we will reposition the canoe in the General

Top figure, Uncle Sam, of the Wooshkeetaan Totem Pole, 1981, cedar, by Nathan Jackson and Steve Brown. Museum Purchase, JDCM 81.01.027.

History Gallery so that viewers can walk directly underneath it and be able to see its interior structure.

Along with remounting the canoe, the Museum will hang the Rie Munoz painting *Chilkat Dancers* in the General History Gallery. The painting, completed in 1962, measures over 20 feet long and 5 feet in height, spanning three-fourths of the gallery wall. The painting hung in the Juneau Airport for 25 years and since its removal in May 2014 has been cleaned by a painting conservator and been in storage. We are so pleased to be putting this significant painting from Rie's early career back out on view.



*Chilkat Dancers*, 1962, oil on canvas, by Rie Munoz. Donated by the Juneau Rotary Club, JDCM 85.13.001.

### Partnering with Goldbelt Heritage on a Douglas History Project

Goldbelt Heritage Foundation recently received a \$1.15 million, three-year award from the Department of Health and Human Services, Administration for Native Americans, Social & Economic Development Strategies (SEDS) for a project titled *A Gaawooya Yei Shtoosneixhji, A Time for Healing*. This project commemorates and honors the precious souls in the Douglas Indian Cemetery, paved over or relocated in 1956, and the inhabitants of the Douglas Indian Village who were removed in 1962. In collaboration with partners, including the Juneau-Douglas City Museum, educational material about the language and culture of the village inhabitants who were displaced is under development.

The project will work with an elders panel and master carver to design and complete two memorial totem poles, one to be located at Savikko Park and the other to be installed at Gastineau Elementary School. An educational history project, the poles will be carved at Juneau School District facilities to introduce youth to master carvers and their apprentices, northwest coast art and local history. Interpretive signs explaining the history of the displacement and covering over of the Douglas Indian Cemetery to build Douglas Highway and Gastineau School, and the removal of the Douglas Indian Village to make way for Savikko Park and Pusich Harbor will be placed at

*Story continued on next page* →



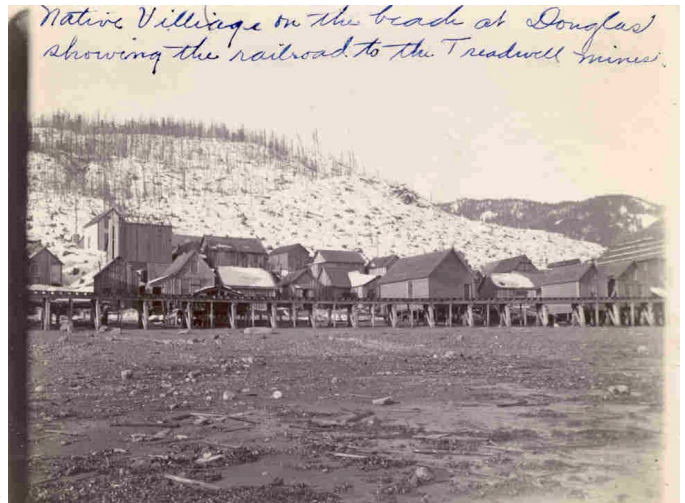
*Douglas History Project continued from previous page:*

Savikko Park and the Gastineau School site.

The City Museum will produce an exhibit about the project and the raising of the poles in 2017, and will upgrade permanent gallery space to appropriately tell the story of the Áak'w and T'aakú Kwáan.

*A Gaawooya Yei Shtoosneixhji, A Time for Healing* culminates with a community-wide Koo.eex (celebration) in 2018. Goldbelt Heritage Foundation is the language, arts and cultural division of Goldbelt, an Alaska Native corporation based in Juneau, Alaska. For more information about this project contact richard.steele@goldbelt.com or Jane.Lindsey@juneau.org.

Douglas Native Village & Railroad to Treadwell, 1900, JDCM 86.13.003.



Ore sample from the Mexican Mine, Treadwell, JDCM 2000.26.002 .

### A Rocks and Minerals Exhibit to be Installed

The Museum was recently awarded an Alaska State Museum Grant-In-Aid to assist with the design and production of a Rocks and Minerals Identification exhibit to be installed in our hands-on room. By enhancing and completing the mining room exhibit, we will be able to present our unique history as one of the largest gold production centers of its time as well as tell the story of current mining operations and the geology of our area.

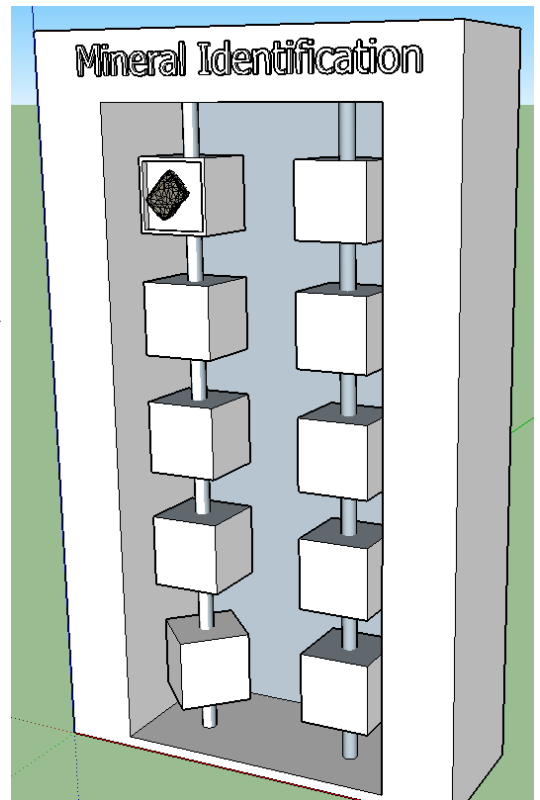
Our Hands-On Mining Room has a box with comment cards for visitors to leave feedback. We have learned that people find the room fun, full of facts, easy to learn in and enjoy that everything can be touched. The room is designed to introduce mining concepts employed in Juneau's past and present. Introducing a rock and mineral identification exhibit to

this room will help us interpret geologic time within the City and Borough of Juneau, encourage hands-on exploration of Juneau area minerals in raw form, and educate visitors about past and present mining activities and history in our area.

Working with local geologists we have chosen ten rocks containing metals and minerals significant to our region: diorite, schist, slate, greywacke, basalt, quartz, gold, granite, silver and lead. For each cube in the display there will be a specimen to be touched, Juneau mining history of the specimen, physical characteristics, and modern day uses. For example, did you know that the Tlingit word for granite is xéel, and granite resists weathering and can be highly polished?

This grant will also help fund the development of rocks and minerals identification hands-on history kits as a companion to this exhibit. A goal of our Museum is that Juneau history travels to the schools, and the schools travel to the Museum. Our Curator of Public Programs is working to align these kits with the district's core content standards for students. Lesson themes and activities will complement our rock and mineral identification interactive and may include topics such as: rock hounding, classification, local geologic history, ancient and modern uses, and mining technology and careers throughout history.

The Museum is scheduled to install this exhibit in our hands-on gallery in April with history kits to follow.



Mock up of the Rocks & Minerals Identification exhibit.

## USS JUNEAU SILVER LOAN AND RECEPTION

February 14, 2016 marks the 74th anniversary of the commissioning of the *U.S.S. Juneau CL-52*, the first of three Naval ships to be named after our city. In August that same year, the *Juneau* headed to the Pacific to assist other military forces fighting the Japanese in World War II. The *Juneau* was hit twice by torpedoes during the Battle of Guadalcanal and sunk within a matter of seconds after the second hit. Of the 693 officers and crew on board, only 10 survived.

With the tremendous help of the Mendenhall Flying Lions, the City Museum has recently secured a long term loan from the U.S. Navy of the *U.S.S. Juneau's* Presentation Silver (L2015.02). In the early 1940's, territorial communities, spearheaded by the city of Juneau, raised the funds to purchase the silver set, as is the custom for cities honored by the naming of a naval ship. The set was presented to the ship by Mrs. Harry Lucas, the wife of then Mayor Harry Lucas (term: 1938-1944). According to Navy documents, the silver originally presented to the CL-52 in 1942 "consisted of a large tray, a punch bowl, a ladle and twenty-four cups, and four candlesticks". Navy protocol had the silver taken off the CL-52 before it engaged in action, allowing it to then be presented to the U.S.S. Juneau CL-119 and the U.S.S. Juneau LPD-10. Today the set includes the original tray, punch bowl and ladle attributed to the CL-52 along with 24 cups and 2 candlestick reproductions attributed to the LPD-10.



The U.S.S. Juneau CL-52 Silver Punch Bowl wrapped in silver cloth and bubble wrap for transport. On loan from the U.S. Navy, L2015.02.002.

To celebrate the home coming of the silver set and commemorate the U.S.S. Juneau CL-52 and her crew, the Museum and the Lions invite you to a Silver Unveiling Reception on February 14, 2016 from noon to 4:00pm. The reception is open to everyone and free of charge. Light refreshments will be provided, courtesy of the Mendenhall Flying Lions and the Friends of the Museum.

## CULTURE, HUMANITIES, ARTS & MUSEUMS JUNEAU FLY-IN, JANUARY 27-29, 2016

Museums and Cultural Centers are anchor institutions in Alaskan communities of every size. They educate children and adults and contribute to sense of place and identity through history, art, culture, and our natural environment. They contribute to our economy and wellbeing through employment and cultural tourism, and care for public trust collections.

This January 27-29, 2016, Museums Alaska will join CHAMP partners Alaska State Council on the Arts, the Alaska Humanities Forum, and the Alaska Historical Society to meet with legislators in Juneau about the importance of the work we do. A fitting culmination of our Fly-In activities, the Governors Arts Awards are scheduled for January 28, 2016 <https://education.alaska.gov/aksca/>.

In 2014 a McDowell Group survey for the Foraker Group demonstrated critical infrastructure needs for Alaska's cultural institutions that care for and exhibit our Alaskan collections. Of the 36 museums contacted, 27, or 75% identified significant capital improvement needs within the next five years. The top four priorities are exhibition space expansion or improvement; increase in facility size; collections storage expansion; and security improvements. Museums Alaska will visit legislators to advance legislation sponsored by Representative Bob Herron of

Bethel (HB52) with companion legislation introduced by Senator Gary

Stevens, Kodiak (SB61). This legislation establishes a grant program for museum construction, expansion, and major renovation projects. Realizing that we must be fiscally responsible as the state enters budget deficits, this enabling legislation allows museums to begin planning projects, cultivate financial partnership, and look to future grant program funding as it becomes available. Simply put, we must continue to work together to responsibly care for our collections while planning for a healthy future for the institutions that house them. More information on Museums Alaska's ongoing initiative can be found at <http://museumsalaska.org/advocacy-materials/>

Museums Alaska is a statewide association of Alaska's museum professionals and volunteers whose mission is to provide opportunities for improvement of museum and culture center services in Alaska and to enhance public understanding of the purposes and functions of Alaska's museums and culture centers. For more information on Museums Alaska and Fly-In activities visit [museumsalaska.org](http://museumsalaska.org) or contact [Jane.Lindsey@juneau.org](mailto:Jane.Lindsey@juneau.org).



## THE LOW DOWN ON WINTER/SPRING PROGRAMS

### Artist's Talks

- Thursday, 1/21, 7 pm: Exhibiting ceramic artist Jeremy Kane shares the techniques used to achieve the surfaces on his wares and will show and tell about the unique kiln he built at the UAS campus.
- Saturday, 2/20, 10:30 am: Avery Skaggs and his support team from the Canvas Art Studio talk about the process of creating the works in his Museum exhibit, *Kinetic*.

### Coffee & Collections Series

- Saturday, 1/23, 10:30 am: Wayne Jensen presents a history of William H. Seward, Secretary of State under Abraham Lincoln, who negotiated the treaty with Russia which brought Alaska into the United States.
- Friday, 2/19, 5:00 pm at the Valley Library: In conjunction with the satellite exhibit *The Empty Chair and World War II in Juneau*, Museum staff will share stories of Juneauites impacted by the removal of Japanese-Americans after the bombing of Pearl Harbor.
- Saturday, 3/19, 10:30 am: In honor of Women's History Month, Marie Darlin and friends will recognize and remember significant women in Juneau's history, based on the 1980 painting by Marjorie Bryhn, *Women of Juneau* (JDCM 81.01.001).
- Saturday, 4/16, 10:30 am: Jeff Barnard talks about the history of Arbor Day, and the community groups involved in the 1966 dedication of the Heintzelman Tree on the grounds of what was then the Juneau Memorial Library.

### Special Events

- Sunday, 2/14, 12-4 pm: Reception for the unveiling of the silver set USS Juneau CL-52, 1942, JDCM 2009.14.002 from the *USS Juneau*, on loan to the City Museum, hosted by the Mendenhall Flying Lions and the Friends of the Juneau-Douglas City Museum.
- Thursday, April 28, 12-1 pm: Kick off to Joseph Alexander ID days, 4/28-4/30. The Museum's Murray gallery will be turned over to the on-going identification of faces without names from this extensive collection. Come by during the noon hour to learn how to get involved with the project and to get trained in accessing the collection on-line.
- Saturday, 4/30, Time TBA: Mug Up: Joe Alexander and his Photo Studio. Enjoy snacks & coffee, and swap stories & reminiscences with hosts Sharon Gaipman & Peter Freer.
- Monday, 5/16, 12-1 pm: Ceremony commemorating the 50th anniversary of Alaska Arbor Day, with dignitaries attending the planting of a new and hardier Hawthorne tree on the grounds of the Juneau-Douglas City Museum.

### Spring Break Camp

- Monday-Friday, 3/21-3/25: The Museum will once again offer a half-day Juneau Explorers Program for youth. Details regarding cost, activities and registration coming soon to our website.



USS Juneau CL-52, 1942, JDCM 2009.14.002



Detail of JOYFUL Girl Roller Skating from the Study for the Teenage Club Murals by Rie Munoz. Donated by Mike Blackwell, JDCM 2015.26.001B.

## 12TH ANNUAL 12X12 COMMUNITY ART EXHIBIT: *LET'S GET EMOTIONAL!*

Wear your heart on your sleeve, blow your stack, shake like a leaf, go bananas, or get hot under your collar and then make a piece of art so that you can submit it to the 2016 12th Annual 12x12 Community Art Exhibition at the Juneau-Douglas City Museum. "Let's Get Emotional" is the theme that you are invited to respond to by creating a work that interprets an emotion of your choosing— Joy, Sorrow, Calm, Anger, Love, Despair, Confusion, Envy, Bored, Confident, Lust, Hope, Anticipation, Disappointed; the possibilities are almost endless.

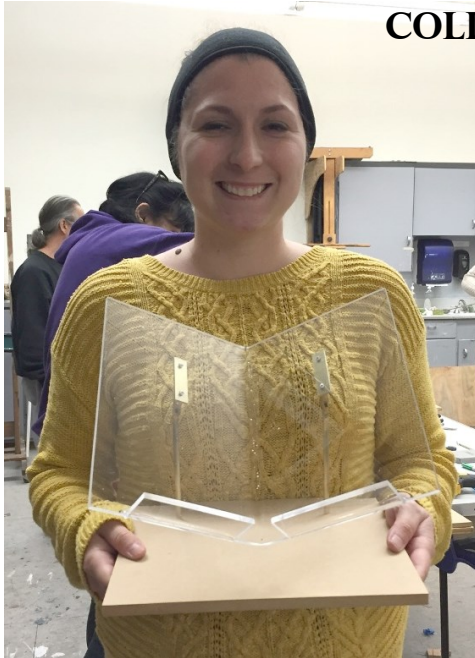
Artists of all ages are invited to participate and should create their works within the parameters of a square or a cube, 12 inches by 12 inches (by 12 inches for 3-D works) including the framing. Submissions for the exhibit will be accepted at the City Museum, along with a completed entry form and the \$12.12 submission fee, starting Tuesday, February 23rd through Saturday, February 27th, 2016, between 10 am and 4 pm.

The exhibit opens Friday, March 4th, 2016 with a First Friday reception from 4:30-7:00 pm and will be on display through April 23rd.

Visit our website at [juneau.org/museum](http://juneau.org/museum) for more details and a submission form, or stop by or call the Museum 586-3572 for more information.



## COLLECTIONS CORNER: MOUNT MAKING IN SITKA



Curator of Collections & Exhibits Jodi DeBruyne with her book mount.

In December 2015, I was able to attend a 3 day “boot camp” in Sitka to learn mount making techniques for displaying books and pinning jewelry. The Mount-Making Boot Camp was hosted by Jackie Fernandez at the Sheldon Jackson Museum in Sitka. They were able to offer the class free of charge thanks to a Museum’s Alaska Collections Management Fund grant. I was able to attend through the generous support of the Friends of the Juneau-Douglas City Museum and its members who covered the cost of my travel and lodging, as well as a personal donation to help cover the cost of meals.

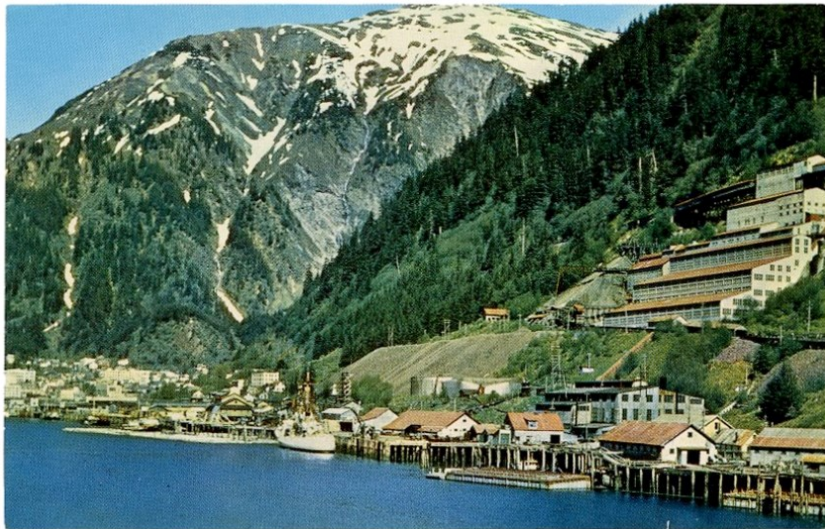
The class taught by Ted Gardeline, the Lead Exhibitions Technician and Mount Maker at the Anchorage Museum at the Rasmuson Center. Also in attendance was another exhibits technician from the Anchorage Museum and a number of museum and parks professionals from institutions in Sitka.

The boot camp was a blast and I learned a lot! We cut and formed Plexiglas to make the surface for a book to rest on. We cut, drilled, bent, and brazed brass pieces to make the stand for the Plexiglas. And finally cut and drilled a wood base to which the plex and brass attach. In the end, we all had mounts to safely and securely display a book. For the jewelry pinning, we cut MightyCore and MDF board down to size, covered the MightyCore in fabric and practiced pinned necklaces and bracelets so that they would lie flat and be secure at any angle.

I’m looking forward to putting these skills to work as we mount new exhibits both our temporary and permanent galleries. A big thanks to all who made this experience possible!

## RECENT ACQUISITIONS

- 2015.38 AJ Mine Postcard, gift by an anonymous donor.
- 2015.39 Ephemera related to Juneau-Douglas High School, gift of Mary Ely.
- 2015.40 Evergreen Cemetery Records, transferred from the CBJ Park Maintenance Department.
- 2015.41 Princess Kathleen photographs, gift of Mike Peterson.
- 2015.42 Juneau High School Ski Club Competition Awards, gift of Renee Guerin.



←Juneau and the Alaska-Juneau Gold Mine Postcard, gift of an anonymous donor, JDCM 2015.38.001.



1st Place Award for Alpine Combined, 1954, gift of Renee Guerin, JDCM 2015.42.004.

## THE MUSEUM'S BIGGEST ASSET—VOLUNTEERS

The City Museum welcomed 17,158 visitors (school groups and public program attendees included) through its doors in 2015, which is an increase of over 1,000 visitors from 2014! With this amount of traffic, the Museum relied heavily on our biggest asset, volunteers. These amazing folks donated over 2,004 hours of their time, which is the equivalent of another full-time employee at the Museum. Even though each of our 28 volunteers help us for just a fraction of their week, the cumulative impact they have on the Museum is enormous. We wish to thank them for another outstanding year and want to mention our appreciation for their contributions and how their efforts allow the Museum to accomplish everything it does.

Six of our volunteers reached new achievement levels this year. We'd like to recognize them for their outstanding support. Carol Scafturon and Patty Winegar achieved the Prospector Level of 500 volunteering hours. Wilma Kirkpatrick and Judy Cole hit our Sourdough Level of 1,000 hours while Marie Darlin becomes the fourth person to join our Investor Level of 1,500 hours. Dan Beason continues his outstanding support of the Museum, reaching a total of over 5,500 hours of volunteering.

If you are interested in helping us out, visit [www.juneau.org/library/museum/volunteers.php](http://www.juneau.org/library/museum/volunteers.php) or call the Administrative Assistant at 586-0967 for more information. We welcome new volunteers to join our team in a variety of capacities suited to their expertise or interests.

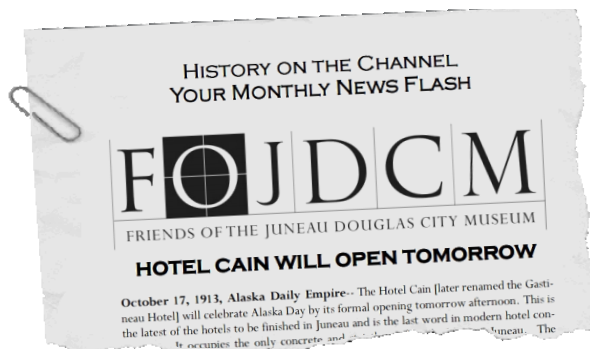


Volunteers Virginia Potts and Donna Hurley helping us search through stacks of historical newspapers for articles about the *USS Juneau*.

## FRIENDS OF THE JUNEAU-DOUGLAS CITY MUSEUM PROMOTE HISTORY AND INVITE MEMBERSHIP

The Friends of the Juneau-Douglas City Museum strive to bring history into focus and support and promote the Juneau-Douglas City Museum. With this mission, each year, the annual meeting and membership campaign offers Juneau and Alaskan art and history to our members and community at large. Featured artists and authors have included Sydney Laurence, Richard Carstensen, James Machkoviak, and Dale DeArmond. This year, our membership campaign features John Straley.

John Straley is an award-winning author of eight crime novels, including *The Woman Who Married a Bear* and *Cold Storage, Alaska* and a book of poetry, *The Rising and The Rain*.



News on the Channel, a monthly history flash courtesy of the Friends.

Winner of the Shamus and the Spotted Owl awards for his detective fiction, John's novels are published all over the world. The University of Alaska Fairbanks awarded him an honorary Doctorate in 2008, and he was appointed the Alaska Writer Laureate in 2006.

For a limited time, new and renewing 2016 members at the \$75 level will receive a copy of *Cold Storage, Alaska*. Each 2016 member at the \$150 and \$250 level will receive one copy of *The Rising and the Rain* and an illustrated haiku print. Those renewing at the \$500 level will receive a complete set of Cecil Younger mystery novels (6 books) courtesy of the Friends.

Membership information as well as goals and accomplishments, and our popular "News on the Channel" monthly e-flyer can be found at [www.JuneauMuseumFriends.org](http://www.JuneauMuseumFriends.org), or contact us by email at [friendsjdc@gmail.com](mailto:friendsjdc@gmail.com). Remember the FojDCM when you file your yearly Permanent Fund Dividend.





Physical Address:

114 West 4th Street  
Juneau, AK 99801

Mailing Address:

155 South Seward Street  
Juneau, AK 99801

Phone: 907-586-3572

Fax: 907-586-4512

VISIT OUR WEBSITE AT

[WWW.JUNEAU.ORG/  
MUSEUM](http://WWW.JUNEAU.ORG/MUSEUM)

**JDCM STAFF:**

**Jane Lindsey**

Director  
jane.lindsey@juneau.org  
907-586-0968

**Jodi DeBruyne**

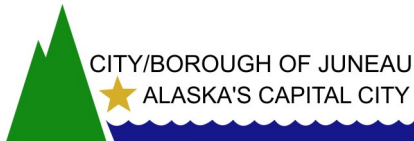
Curator of Collections & Exhibits  
jodi.debruyne@juneau.org  
907-586-0965

**Marjorie Hamburger**

Curator of Public Programs  
marjorie.hamburger@juneau.org  
907-586-0966

**Christine Twete**

Administrative Assistant  
christine.twete@juneau.org  
907-586-0967



**HOURS through APRIL:**

Tues through Sat 10 am-4 pm  
Closed Sundays & Mondays

**ADMISSION OCTOBER-APRIL**

Free thanks to our generous  
community sponsors who  
underwrite the fees.

**BECOME A FRIEND** and receive  
Museum benefits —  
[juneaumuseumfriends.org](http://juneaumuseumfriends.org)

# JUNEAU-DOUGLAS CITY MUSEUM UPCOMING EVENTS CALENDAR

## JANUARY

**FREE ADMISSION IN MEMORY OF HAROLD O. FOSSUM**

- 21 SURFACE PROCESSES: A PRESENTATION BY CERAMIC ARTIST JEREMY KANE, 7-8:30 PM
- 23 COFFEE & COLLECTIONS: THE SESQUICENTENNIAL OF SEWARD'S FOLLY WITH WAYNE JENSEN, 10:30-12 NOON
- 27-29 MUSEUMS ALASKA FLY-IN
- 28 GOVERNOR'S AWARDS FOR THE ARTS & HUMANITIES, 6:30PM  
JUNEAU ARTS & CULTURE CENTER (TICKETS REQUIRED)

## FEBRUARY

**FREE ADMISSION IN MEMORY OF BOB & DICK PEGUES**

- 5 FIRST FRIDAY RECEPTION FOR *KINETIC*: PAINTINGS BY AVERY SKAGGS, 4:30-7 PM
- 14 U.S.S. JUNEAU SILVER UNVEILING RECEPTION, 12-4 PM
- 19 PRESENTATION ON THE EXHIBIT *THE EMPTY CHAIR, THE FORCED REMOVAL AND RESETTLEMENT OF JUNEAU'S JAPANESE COMMUNITY*, VALLEY LIBRARY, 5-7:00 PM
- 20 COFFEE & COLLECTIONS: MY LIFE AS AN ARTIST WITH AVERY SKAGGS AND HIS SUPPORT TEAM, 10:30-12NOON
- 23-27 12X12 SUBMISSIONS DROP-OFF, 10:00 AM TO 4:00 PM

## MARCH

**FREE ADMISSION THANKS TO ROBERT & MICHELLE STORER**

- 4 FIRST FRIDAY RECEPTION: 12TH ANNUAL 12X12, *LET'S GET EMOTIONAL*, 4:30-7 PM
- 19 COFFEE & COLLECTIONS: WOMEN IN JUNEAU'S HISTORY WITH MARIE DARLIN, 10:30-12 NOON
- 21-25 JUNEAU EXPLORERS PROGRAM (SPRING BREAK FOR SCHOOLS)

## APRIL

**FREE ADMISSION THANKS TO ROBERT & MICHELLE STORER**

- 1 FIRST FRIDAY, MUSEUM OPEN UNTIL 7:00 PM
- 16 COFFEE & COLLECTIONS: THE HISTORY OF ARBOR DAY IN JUNEAU WITH JEFF BARNARD, 10:30-12 NOON.
- 26-30 12X12 SUBMISSION PICK UP, 10:00 AM TO 4:00 PM
- 28 TRAINING SESSION FOR ON-LINE ACCESS TO THE MUSEUM'S COLLECTION, STOP BY BETWEEN 12 NOON-1 PM.
- 28-30 J. ALEXANDER PHOTO COLLECTION ID DAYS, 10 AM-4 PM.
- 30 MUG UP: JOE ALEXANDER AND HIS PHOTO STUDIO, A COMMUNITY COFFEE BREAK & CONVERSATION. TIME TBA.

## MAY

**PAID ADMISSION TO THE MUSEUM BEGINS, THROUGH SEPT.**

- 6 FIRST FRIDAY RECEPTION: SOLO EXHIBITION OF PAINTINGS BY DAVID WOODIE, 4:30-7:00PM
- 16 CEREMONY MARKING THE 50TH ANNIVERSARY OF ARBOR DAY, SPONSORED BY THE JUNEAU URBAN FORESTRY PARTNERSHIP, THE JUNEAU GARDEN CLUB AND THE ALASKA STATE COMMUNITY FORESTRY PROGRAM, 12-1:00 PM.