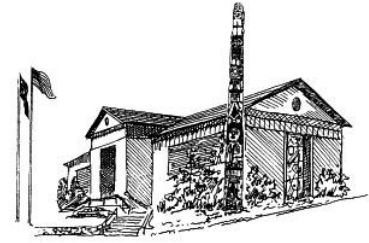


# PAST & PRESENT

VOLUME 18, ISSUE 3

SEPTEMBER 2014



## MUSEUM, COMMUNITY DEVELOPMENT DEPARTMENT & PARKS RECEIVE HISTORIC PRESERVATION GRANT FOR EVERGREEN CEMETERY MAPPING

The City of Juneau has received a certified local government grant from the State Historic Preservation Office to assist in an Evergreen Cemetery Mapping & Brochure project. This project will improve the overall management and accessibility of one of Alaska’s most historic cemeteries and contribute to historic preservation of the site.

Evergreen Cemetery has had a major influence on the development of Juneau. The Governor’s House sits on Calhoun Avenue, which was called “Cemetery Road” until about 1902 because it was built to provide access to the new cemetery from downtown. Along with updating and preserving burial plot records, this project will produce a brochure that will highlight community members who have contributed to our historic downtown and are now buried in Evergreen Cemetery.

The project will digitize the 25 large format Mylar map sheets (36 x 48 inches) that comprise the current gravesite record for Evergreen



*Cityscape, Juneau Alaska, photo by Mel Anderson, c1978, JDCM.2005.06.162.*

Cemetery, established in 1887. Data points will be collected in the cemetery using global positioning systems (GPS). The data points will then be processed and the 25 digitized map sheets will be georeferenced utilizing geographic information systems (GIS). Approximately 6,000 gravesite point features will be created and added to this geodatabase.

This project will also survey and update approximately 8405 gravesites and create a searchable database containing the relative location of the known graves, including the names of the deceased, the date of the burial, and the location of the gravesite. Information such as the condition of the headstone can be added to this database as well as any photos collected. Laura Boyce, CBJ Community Development Planner, will manage the project.

### GIA GRANT – INTRODUCTORY EXHIBIT AND CASE

The Juneau-Douglas City Museum has received Grant-In-Aid funding from the Alaska State Museum to purchase a new exhibition case and to develop a new introductory exhibit for our general history gallery. The proposed case is constructed of glass, giving it a more modern look and a larger exhibit space compared to the existing wooden case. The case will have an internal dividing wall allowing for an exhibit on each side. On one side the Museum will continue to display recently acquired 2-D artwork. On the other side, the Juneau Volunteer Fire Department exhibit will be retired after 15 years on display and a new introductory exhibit will be installed. The plan is to introduce the historic Juneau footprint by focusing on the geography of the land it occupies. This approach will allow us to introduce the various Juneau communities who live here and tell the story of how the land has changed over the years. We are very excited about our new plans! Keep an eye out for updates as we develop the exhibit throughout winter.



*Current exhibit case at the entrance to the General History Gallery which will be replaced.*

#### INSIDE THIS ISSUE:

NEW EXHIBITS	2-3
FALL PROGRAMMING	4
COLLECTIONS CORNER	5
RECENT AQUISITIONS	5
MUSEUM SHOP SALE	6
EXCLUSIVE NOTECARDS	6
HVAC	6
CALENDAR & CONTACT INFORMATION	7

## FALL EXHIBITS: SOLO SHOWS

### Marianne Manning in November—Opening Reception November 7th



Marianne and her grandson in her studio, 2011.

Marianne writes, “For this show I have been working on a combination of ideas. I will have portraits. I love painting portraits, watching someone appear to come to life on my canvas, capturing a smile, or expression. More than painting a person, I try and paint a personality. I have also been working on landscapes and light. There is a natural freedom in painting a landscape that is not always possible with a portrait. I like to add things and take things out of landscapes. By having people, animals, and personal pets in landscape I am able to work in a combination of both an expressive and more exact style of painting in the same image.”

Marianne Manning will be exhibiting recent oil and pastel works from November 7-29, 2014. A public reception takes place on November 7, and she will give an artist’s talk at a Coffee & Collections program on Saturday, November 22nd, from 10:30-noon.

### TOE-tally Juneau, November through April—Opening Reception November 7th



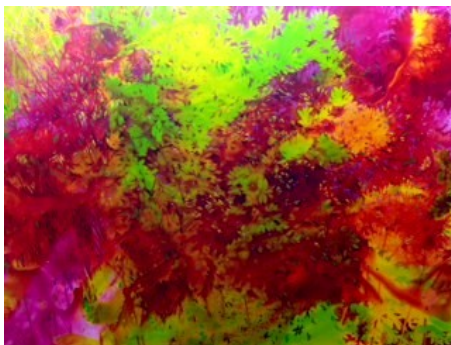
*Have You Seen Summer?* by Tony “TOE” Newman, June 3, 2012. JDCM 2012.13.001. Museum Purchase.

When Tony “TOE” Newman moved to Alaska in 1994 the lack of a political cartoonist surprised him. He quickly took up the role and his satirical and humorous cartoons began appearing in local papers in 1995. Throughout the years, his drawings have been published in *The Big Skinny*, *The Paper*, *Capital City Weekly*, and the *Juneau Empire*.

Newman has no classical cartoonist training, but grew up enjoying the iconic cartoons of the *New Yorker*. It is from those that he finds inspiration for his own drawings which focus on local topics including politics, weather, the tourist industry, and general life in Juneau. In a 2007 *Juneau Empire* article, Newman said: “My main responsibility is to make jokes, to make people laugh. I like to think I would represent a joke making fun of both sides of the issue, if I thought it was funny.”

*TOE-tally Juneau: Cartoon Selections from the City Museum’s Collection* will be on display through mid-April and includes 14 cartoons and 4 illustrated stories by Jim Geraghty, Kalean Haddock, Carol Garrett and Kary Kegaan Eddy.

### Constance Baltuck in December—Opening Reception December 5th



*Blueberry Progression* by Constance Baltuck.

Constance writes, “There are two ideas that are linked in my mind with this show of work; the first is about nature. Being involved with it, through art or observation, on a small and local scale, leads to an appreciation of nature and conservation of nature in a global way, hopefully leading to thoughtful, respectful, and mindful attitudes toward life, in general, on planet Earth. So, drawing plants can save the world!

On a second theme, the art that has ended up in this show will have come about through a process of experiment, accident, and intention, that has evolved in the months I’ve been working on it. It is important, at least in my own experience, to keep work interesting, challenging, and fun by being open to new thoughts and concepts.”

Constance’s large scale, multi-panel acrylic paintings will be on exhibit from December 5-27, 2014 and she will give an artist’s talk at a Coffee & Collections program that month.

## FALL/WINTER EXHIBITS: GROUP SHOWS

### Downtown Sights: Paintings from the Collection—Opening Reception November 7th

Architecture literally surrounds us. The buildings that line our streets serve various purposes. They are our homes, places of work, recreation centers, worship halls or favorite stores and restaurants. Every day we walk or drive by these structures, often without paying much conscious notice to them.

However, the city's architecture has caught the eye of many of Juneau's artists. They have taken their canvases to their windows or directly to the streets in order to capture the colors and shapes of the buildings and surrounding foliage as well as how the seasons change the scenes around us.

This exhibit features eight works of art by five local artists: Phyllice Bradner, Barbara Craver, Jay Crondahl, Sue Kraft and Alan Munro. Each painting is accompanied by a quote from the artist as well as some historical information about the building or area seen in the painting. The exhibit runs November 7, 2014 through April 18, 2015 in the Map Case Gallery.



*Gastineau Avenue Color* by Jay Crondahl, 2008. Acrylic on canvas. JDCM 2012.21.001. Purchase of this artwork has been made possible through the generous support of the Rasmuson Foundation.

### 2nd Annual Ordinary Things/Extraordinary Tales—Opening Reception January 2nd

Last year we invited thirteen community members into collections storage and asked them to pick a utilitarian object and write a personalized story label to accompany the object on display. This kind of community-curated exhibit was something new for the City Museum and we think it was a roaring success, so this year we are at it again. The main concept will be the same but this year we are inviting people who represent a broad range of professions and along with the stories, the labels will include historical information about each chosen object. The exhibit will run from January 2, 2015 through February 28, 2015.



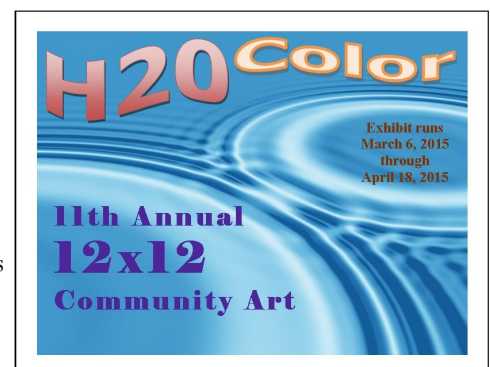
Hauch No. 14 Kerosene Blowtorch, 1897, JDCM 2006.48.001.

"The blowtorch was given to Karl Hegg by his father-in-law James Boone. (It) was probably a gift to James from his friend Bill Byington, a longtime A.J. Mining Company engineer. This type of kerosene blowtorch was used in mining because, unlike gasoline, kerosene is not explosive. The blowtorch still works. It emits a long, blue flame. Karl used it to cook crab for many years."

### Annual 12x12 Exhibit: H2O Color—Opening Reception March 6th

The 11th Annual 12x12 Community Art exhibit opens March 6, 2015 and runs through April 18, 2015. This year's theme is H2O Color. Whether you are a watercolorist or want to create a water themed/inspired work in another medium, start thinking about your submission.

All entries must measure 12" x 12" (x 12" for 3-D works) including the framing. Submissions will be accepted starting Tuesday, February 24 through Saturday, February 28th, 2015 between 10am and 4pm at the City Museum. The entry fee is \$12.12 per piece. All ages are encouraged to participate. See our website [www.juneau.org/museum](http://www.juneau.org/museum) or call the Museum at 586-3572 for more information.



## MUSEUM PROGRAMMING THIS FALL

Here is rundown of public programs happening at the City Museum during the next several months. Please check our website frequently or, better yet, get on our electronic mailing list to get information delivered to your inbox about these and other events.

### Solo Artists

We are soliciting for artists interested in applying for an exhibition of their work, to take place during our 2015-2016 season. Successful candidates will plan to exhibit work that compliments our mission, “to foster . . . an awareness of Juneau’s cultural heritage, values and community memory so that we may draw strength and perspective from the past, inspire learning and find purpose for the future.” Application forms are available at the Museum or on our website at [www.juneau.org/museum](http://www.juneau.org/museum) under “Exhibit Opportunities”.

### Coffee & Collections

Check out the calendar at the end of this newsletter for details of the Coffee & Collections series, which happen about once a month on a Saturday morning from 10:30 to noon, with hot coffee generously donated by Heritage Coffee Company. Our first event takes place on October 11th, with a panel of people instrumental in making the dream of a memorial honoring Juneau’s Japanese community incarcerated during World War II come true. They will be talking about the power of imagination, determination, community support and friendship. November and December bring artists’ talks with Marianne Manning and Constance Baltuck.

### Empty Chair Education

Throughout the month of October, the Museum will play host to 5th grade classes in the school district visiting both the Empty Chair exhibit in our building and the memorial up at Capital Park. Students will also do a related art project in their classrooms and will have the opportunity to attend a *Living Voices* performance which includes live storytelling combined with archival film to “bring history to life” on October 16. Community members will have a chance to see *Living Voices: Within the Silence* performed on October 17 at a UAS “Evening at Egan” event. For details check out the UAS Egan page at <http://www.uas.alaska.edu/eganlecture>.

### Historytime

After a pilot program on Tuesday mornings this summer, Historytime returns this fall in a time slot that makes attendance possible for many parents who work full-time outside the home. Every first Saturday of the month, at 11 am, come learn a little history and more about our town through

books and activities in and around the Museum. Historytime is open to all ages of children (and adults!) capable of sitting for half an hour listening to and discussing stories in the company of their peers.

### Quilting & Needle Arts

Come by the Museum on Saturday, October 4, between 10 am and noon to view Ginger Blaisdell and Sheila Box, members of the Capital City Quilters, at work on their fabric art creations. They will be available to talk with you about their process and hook you up with opportunities to learn how to do similar work yourself. This event is happening in conjunction with the last month of our quilt exhibit, *Outside My Window*.



Giant Frog Totem Pole Postcard, JDCM 2004.40.001.

## COLLECTIONS CORNER – JOSEPH ALEXANDER REHOUSING GRANT

In 2013 the Juneau-Douglas City Museum accessioned two Joseph Alexander Photographic Collections. Part of the collection was transferred to us from the State Historical Library (2013.10) and the other part was donated by Susan Derrera (2013.11). The two collections are both from the studio of local photographer Joseph Alexander who had a shop on Front Street between the 1940s and 1980s. They total approximately 54,000 photographic negatives, prints and envelopes.



James Knudson (left), Don Harris (center), and Mark Kavanaugh (right) work on "Volunteer Days" rehousing the J. Alexander collections.

Earlier this year the City Museum received a Collections Management Grant from the Rasmuson Foundation and managed by Museums Alaska. The grant allowed us to purchase archival quality polypropylene sleeves, folders and boxes to properly house the Joseph Alexander Collections. The Alexander Rehousing project has officially been completed and all 54,000 items have been inventoried, housed and assigned accession numbers. Museum volunteers and interns were instrumental in accomplishing this project. Over the past year and a half, 17 volunteers have worked over 550 hours on the project. We are so grateful to all those who have donated their time to this effort.

## RECENT ACQUISITIONS

2014.11 The George Osborne Collection, donated by Linnea and Bernie Osborne.

2014.12 *Juneau Waterfront*, print by Laurie Craig Ferguson, Museum Purchase.

2014.13 *Late Spring from Starr Hill*, painting by Sue Kraft.

2014.14 *Chief Hat Series*, set of 5 Dale DeArmond prints, donated by Larry Cheatham.

2014.15 Two U.S.S. Juneau artifacts, donated by an anonymous donor.

2014.16 Totem High School Yearbooks and other ephemera, donated by Jim Asper.

2014.17 Winter & Pond Kodak Camera, donated from the collection of William W. Jorgenson.

2014.18 87 DeArmond prints, donated by William DeArmond.

2014.19 1984 Letter written by John Dix, donated by Gary Courtright.

2014.20 *Our Town* quilt made and donated by the Gold Creek Quilters.

2014.21 13 DeArmond print and blocks, Museum Purchase.

2014.22 52 Photographs from the Amos Alter Collection.

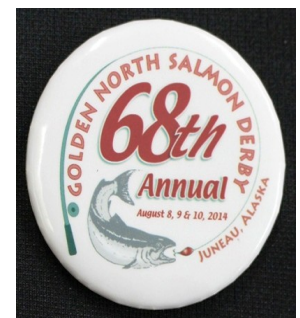
2014.23 Signing Pen from the Dr. Walter Soboleff Day Legislation, donated by Ross Soboleff.

2014.24 2014 Salmon Derby Pinback Button, donated by Dan Beason.

2014.25 *Mendenhall Fireweed*, quilt by Clare Brooks. Museum Purchase.



*Late Spring from Starr Hill*, by Sue Kraft. JDCM 2014.13.001.



2014 Salmon Derby Pinback Button, JDCM 2014.24.001.

## END OF SEASON SALE AT THE MUSEUM SHOP

For the entire month of September, the City Museum is having a 25% off end of season sale in the gift shop. Everything is on sale!\* It is not too early to start your Christmas shopping. We have glass tile coasters made by local artist Rachael Juzeler, fantastic children’s books and toys, and ornaments. Need something for the history lover in your life? What about a book detailing the history of gold mining in Juneau or a set of collector’s coins celebrating Juneau’s Centennial? If your special someone is more interested in art, pick up one of our lovely Giclee prints. There is something for everyone at the City Museum gift shop so don’t miss the chance at 25% off! Sale runs from September 3<sup>rd</sup> – September 30<sup>th</sup>.

\*Thyes Shaub jewelry not on sale.

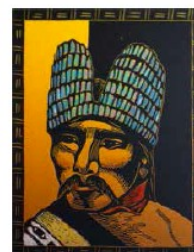
## FRIENDS PRODUCE EXCLUSIVE CARDS FROM *THE HAT SERIES*

As a tribute to Dale DeArmond and her work, the Friends of the Juneau-Douglas City Museum has reproduced four of her prints from *The Hat Series* for resale as notecards. This project will help raise funds for the Friends group to be used for Juneau history projects, acquisitions, and support of the City Museum.

Dale DeArmond is known for her woodcut prints and book illustrations of Alaskan life, stories and legends, people and animals. Her life and Alaskan experience spanning her artistic career of some 60 years was creative inspiration for her work. As a young woman moving to Sitka, Alaska in 1935, she was immersed in the local Tlingit culture and language at the time.

According to her son, William (Bill) DeArmond, “She heard some Tlingit stories from an elderly man there, and tried to emulate his voice and style when she transcribed the Raven stories from ethnologist John R. Swanton, resulting in the book Raven, A Collection of Woodcuts. A librarian and bibliophile, Dale studied the work of various anthropologists, particularly Franz Boas, Frederica de Laguna, George Thornton Emmons, and other sources on Southeast Native culture. Dale returned to the theme of Native Alaskan portraiture and headwear throughout her artistic career beginning in the 1960s. *The Hat Series* is a collection of 14 hand-colored wood engravings crafted in the mid-1990s, of which four images have been selected for this exclusive card set.

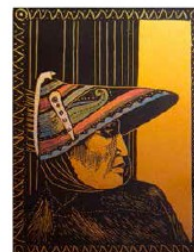
To order your note card sets please contact the Friends of the Juneau-Douglas City Museum at [friendsjdcmm@gmail.com](mailto:friendsjdcmm@gmail.com).



The Bear's Ears Hat • JDCM 2013.04.013



Seal Decoy-Eskimo • JDCM 2013.04.006



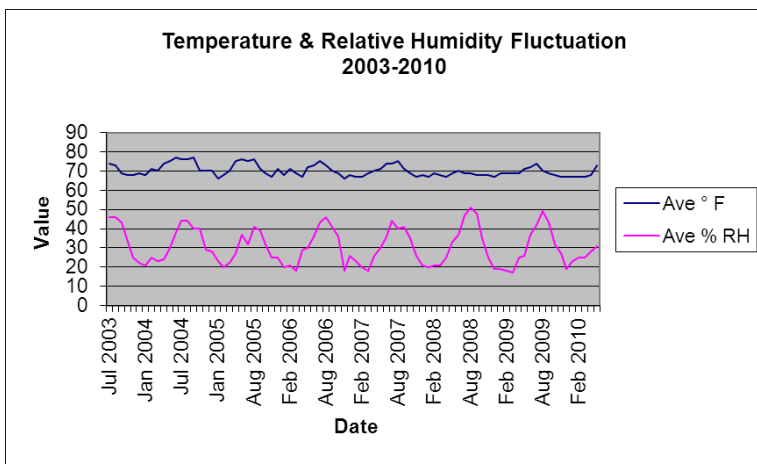
Hunting Hat-Aleut • JDCM 2013.04.002



Young Raven Hat • JDCM 2013.04.011

*The Bear’s Ear Hat, Seal Decoy-Eskimo, Hunting Hat-Aleut & Young Raven Hat, by Dale DeArmond.*

## HEATING, VENTILATION AND HUMIDITY PROJECT AT THE JDCM



The graph to the left shows the extreme variances in temperature and, especially, in humidity that the Museum experienced between July 2003 and February 2010. Fluctuations like this are potentially harmful to the preservation of the Museum’s art and artifacts. With the HVAC system in place, the building’s temperature and humidity will remain more stable.

Stay tuned for new and improved data logger reports as our new ground source air pump system installation is completed, tested and begins operation mid- late September.



Physical Address:

114 West 4th Street  
Juneau, AK 99801

Mailing Address:

155 South Seward Street  
Juneau, AK 99801

Phone: 907-586-3572

Fax: 907-586-4512

VISIT OUR WEBSITE AT  
[WWW.JUNEAU.ORG/](http://WWW.JUNEAU.ORG/)  
MUSEUM

**JDCM STAFF:**

**Jane Lindsey**

Director

[Jane\\_Lindsey@ci.juneau.ak.us](mailto:Jane_Lindsey@ci.juneau.ak.us)

907-586-0968

**Jodi DeBruyne**

Curator of Collections & Exhibits

[Jodi\\_DeBruyne@ci.juneau.ak.us](mailto:Jodi_DeBruyne@ci.juneau.ak.us)

907-586-0965

**Marjorie Hamburger**

Curator of Public Programs

[Marjorie\\_Hamburger@ci.juneau.ak.us](mailto:Marjorie_Hamburger@ci.juneau.ak.us)

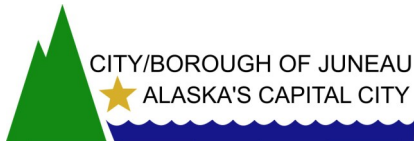
907-586-0966

**Christina Bruce**

Administrative Assistant

[Christina\\_Bruce@ci.juneau.ak.us](mailto:Christina_Bruce@ci.juneau.ak.us)

907-586-0967



# JUNEAU-DOUGLAS CITY MUSEUM

## UPCOMING EVENTS CALENDAR

### SEPTEMBER

- 18 HISTORIC DOWNTOWN WALKING TOUR, 1:30 PM
- 23 HISTORIC DOWNTOWN WALKING TOUR, 1:30 PM
- 24 HISTORIC DOWNTOWN WALKING TOUR, 1:30 PM

### OCTOBER

#### FREE ADMISSION THANKS TO THE PIONEERS OF ALASKA MENS & WOMENS IGLOO 6

- 4 HISTORYTIME, 11AM
- 4 QUILTING & NEEDLE ARTISTS AT WORK, 10AM-12NOON
- 11 COFFEE & COLLECTIONS: THE STORY BEHIND THE EMPTY CHAIR MEMORIAL, 10:30AM-12NOON
- 17 LIVING VOICES PERFORMANCE AT UAS, 7PM
- 17 ALASKA DAY—MUSEUM CLOSED

### NOVEMBER

#### FREE ADMISSION THANKS TO DON & ALMA HARRIS

- 1 HISTORYTIME, 11AM
- 6 FOJDCM ANNUAL MEETING, 6:30 PM, HANGAR ON THE WHARF
- 7 FIRST FRIDAY RECEPTION: 3 NEW EXHIBITS, 4:30-7PM
- 11 VETERAN'S DAY—MUSEUM CLOSED
- 22 COFFEE & COLLECTIONS: MARIANNE MANNING
- 27-28 THANKSGIVING HOLIDAY—MUSEUM CLOSED

### DECEMBER

#### FREE ADMISSION THANKS TO ROBERT & MICHELLE STORER

- 5 FIRST FRIDAY RECEPTION: CONSTANCE BALTUCK, 4:30-7PM
- 6 HISTORYTIME 11AM
- TBA COFFEE & COLLECTIONS: CONSTANCE BALTUCK
- 25 CHRISTMAS—MUSEUM CLOSED

### JANUARY

#### FREE ADMISSION IN MEMORY OF HAROLD O. FOSSUM

- 1 NEW YEAR'S DAY—MUSEUM CLOSED
- 2 FIRST FRIDAY RECEPTION: ORDINARY THINGS, 4:30-7PM
- 3 HISTORYTIME 11AM

**HOURS through SEPTEMBER 24:**

Monday through Friday 9 am-6 pm

Saturday 10 am-4:30 pm

**HOURS beginning SEPTEMBER 25:**

Tuesday through Saturday 10 am-4 pm

Closed Sundays & Mondays

**ADMISSION through SEPTEMBER:**

**\$6.00** ages 13 and older

**\$5.00** Seniors

**FREE** ages 12 and younger

**ADMISSION beginning OCTOBER**

Free thanks to our generous community sponsors who underwrite the fees (see above for details).

**BECOME A FRIEND:**

And receive Museum benefits.

Visit [www.juneaumuseumfriends.org](http://www.juneaumuseumfriends.org) for details.

