

Past & Present

Juneau-Douglas City Museum: Collecting, preserving and interpreting Juneau-Douglas history and culture

Volume 14, Issue 3

September 2011

F O J D C M
FRIENDS OF THE JUNEAU-DOUGLAS CITY MUSEUM

Please join us for the
**Friends of the Juneau-Douglas
City Museum's
1st Annual Meeting**

Monday, October 10th
Noon to 1:00pm
at the City Museum

The Friends will be selecting board members & discussing upcoming projects.

Pizza and beverages will be provided by the Friends of the Juneau-Douglas City Museum.

Please **RSVP by Wednesday, October 5th** by calling 586-3572 or email: Alysia_Jones@ci.juneau.ak.us

Upcoming Exhibits to Highlight Museum's Collection



This fall is the season of recent acquisitions in the Juneau-Douglas City Museum galleries.

Recent Acquisitions '11 opens in the audio-visual gallery on **Friday, October 7th from 4:30-7:30pm**. The exhibit highlights drawings, paintings, photographs, and carvings done by well-known Alaska artists both past and present including: Jim Willie Marks, Frances Davis, Dale DeArmond, Sharron Lobaugh, Rie Munoz, Jack Hermle, Winter & Pond,

and Trevor Davis. *Recent Acquisitions '11* will be on display through April 2012.

In December, the Museum opens *Rasmuson Retrospective* in the main gallery. This exhibit features works by contemporary Juneau artists purchased with funds from the Rasmuson Foundation's Art Acquisition Fund. Initiated in 2003, the Art Acquisition Fund provides grants to Alaska museums to purchase current work by practicing Alaskan artists.

This exhibit represents 9



years of active collecting of contemporary Juneau art by the City Museum. "This art acquisition fund has allowed us to pass on over \$70,000 from the Rasmuson Foundation to an array of local Juneau artists in order to collect and preserve their work," says Director Jane Lindsey. Thanks to the Rasmuson Art



Acquisition Fund, fifty Juneau artists are represented in the Museum's collection.

Artwork by Mark Daughthee, Richard A. Beasley, Devita Stipek-Writer, Kay Field Parker, Anna Brown Ehlers, Rick Clair, Marilyn Holmes, Rie Munoz, Dan DeRoux, Ella Johnson-Bentley, Charity Green, Barbara Craver, David Woodie, Salty Hanes and Brandon Hauser will be included in this exhibition.

The exhibit opens **Friday, December 2nd from 4:30-7:30pm** with a reception provided by the Friends of the Juneau-Douglas City Museum. *Rasmuson Retrospective* will be on display through January 28, 2012.

INSIDE THIS ISSUE:

<i>Grant-in-Aid Projects</i>	2
<i>Free Winter Admission Sponsors</i>	2
<i>Meet Our New Intern</i>	2
<i>A Behind the Scenes Look at an Exhibit Installation</i>	3
<i>Volunteers on View</i>	4
<i>Museum Store</i>	4
<i>Recent Acquisitions</i>	5
<i>Collections Corner</i>	5
<i>Calendar of Events</i>	6

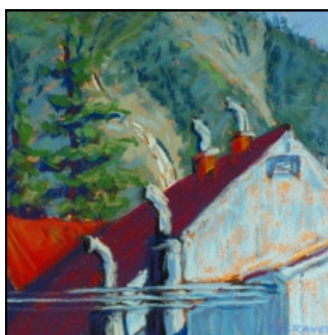


Photo credits: Belle Blue for Mayor, JDCM2009.10.001; Fire Break by Brandon Hauser, JDCM 2010.02.004; Tlingit Woman by Dale DeArmond, JDCM 2010.06.002; Power House by Barbara Craver, JDCM2009.39.001.

**2011-2012
Free Winter
Admission Sponsors**

October:

Pioneers of Alaska Men & Women's Igloo #6

November:

(available for sponsorship)

December:

Michelle & Robert Storer

January:

*In Memory of
Harold O. Fossum*

February:

*In Memory of
Harold O. Fossum*

March:

Michelle & Robert Storer

April:

Michelle & Robert Storer

Thank you

*to our Free Winter
Admission Sponsors for
their generous contribution
& support of the greater
Juneau Community.*

**Collection Storage & Environmental Monitoring Upgrades
Thanks to Grant-in-Aid**



Collections Storage area to be upgraded.

With collections growing an average of 300 objects per year and storage challenges continually evolving, the Juneau-Douglas City Museum is anxious to being work on its FY2012 Grant-in-Aid project. This year's project includes collections storage and upgrading the Museum's environmental monitoring system.

Project funds will be used to purchase and erect a new storage rack in the compactor storage room,

purchase materials to equip the storage rack, and purchase a new flat file. A custom-made tyvek cover for the shelves will provide additional protection from environmental risks such as dust, light and temperature fluctuation. Overall, this upgrade will provide safer, more efficient storage for approximately 221 large objects in the collections storage room.

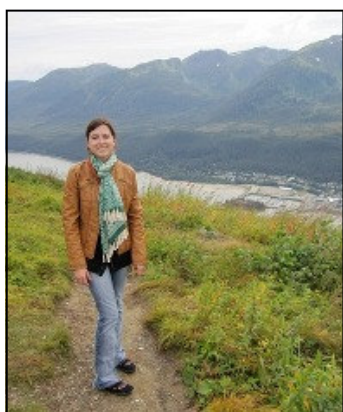
In addition to upgrading collection storage, the project calls for replacing an aging

environmental monitoring system with new PEM2 data loggers. The new data loggers will provide data that will help us to understand the daily fluctuation in temperature and relative humidity in the facility. The new equipment will allow us to monitor and manage temperature and humidity in the exhibit galleries by visitor pattern and summer weather, while keeping storage zones as stable as possible. This upgrade to the Museum's environmental monitoring system is an important step for the Museum towards funding for a new HVAC system.

Grant-in-Aid is a program of the Alaska State Museum that awards grants to Alaska museums and museum-related organizations for projects that improve the quality of museum services and operations within the state. The FY2012 grant award marks the Juneau-Douglas City Museum's 19th Grant-in-Aid.



Meet Museum Intern Victoria Brown



Victoria on the Mount Robert's Trail. She will be interning with us through February 2012.

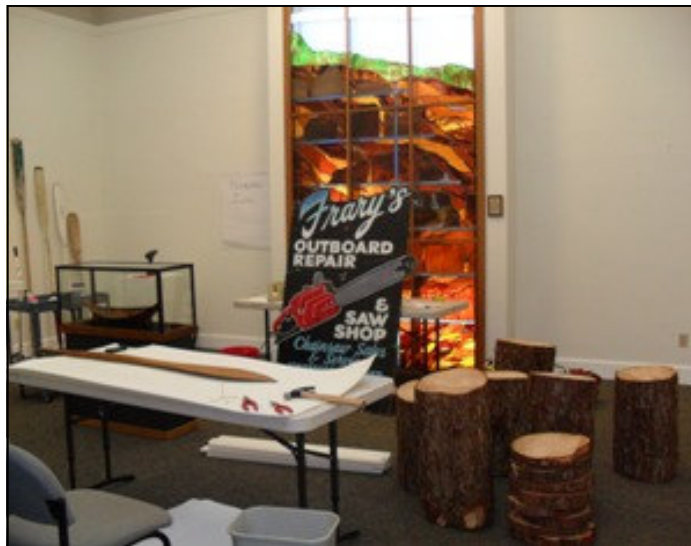
I consider myself very fortunate to be the current intern at the Juneau-Douglas City Museum. The internship offers a lot of diversity and hands-on experience. My typical work day ranges from opening the museum to putting together an exhibit to designing publicity materials for upcoming events. Other duties include learning how to catalog objects into PastPerfect and helping with educational and public programs.

Before graduating from Iowa State University (ISU) with a BFA, I worked in the paper conservation department at the Parks Library at ISU. After graduation, I interned at the Des Moines Historical Society and learned about different aspects of artifact conservation. Having experience in paper and artifact conservation has been a tremendous help for museum work, where many objects are in need of careful

handling and repair.

A vacation cruise to Alaska, made me realize how much I enjoyed being in this beautiful state. I was pleasantly surprised by the extent of the art community that thrives in Juneau and frequently wander around the art galleries in my spare time. I enjoy being outdoors and have been exploring the numerous trails that Juneau and Douglas have to offer.

A Behind the Scenes Look at Installing ‘Get Your Motors Running’



When visiting a museum one might witness the installation of an exhibition, but rarely do visitors observe the entire process or how much work goes into an exhibit. *Get Your Motors Running: Chainsaws and Outboards on the Last Frontier* opened in May 2011, but planning began in early 2010.

“It is always best to start with the objects or artifacts, if you have good objects, you can’t help but have a good exhibit. Then you need to gather the history. I don’t just mean history in the academic sense, like when something was made and what it is made of, but the history of the people who used it, or lived with it. That history gives inanimate objects a story. After that it is just a question of pulling everything together, there is a lot of writing; and we had a great designer to help us with this show.” said Field when talking about the process of creating the exhibit.

Some of the objects and themes in this exhibit are

relatively new compared to other museum objects. Seeing a chainsaw or outboard from the 1950’s makes it clear how much change has occurred in regards to these objects in a very short amount of time.

“I enjoy getting to meet the people who used or collected these object and listening to their stories. The oldest outboard in the show is 72 years old. So there are still people around who remember using these things. They have fascinating stories about living in Alaska and depending on objects like



these, some times for their lives” said Field.

In addition to gathering the history, a lot of thought goes into deciding how to mount objects for display. The theme of this exhibit called for unique mounts, which required a lot of forethought. Logs were cut 8 months prior to the exhibit installation to allow time for them to go through a freeze-thaw cycle and proper monitoring for bugs. This lengthy process ensured the logs were safe to bring into the museum.

Sergei Morosan, of CBJ Building Maintenance

chainsaws or outboards but quickly came to appreciate the history of both.

“I think that it is great that the Juneau-Douglas City Museum has exhibits on topics not usually explored in a museum. Chainsaws and outboards had such a large impact on the lives of people in Southeast Alaska it seems that everyone has a story involving one of these machines” said Poteet.

“I thoroughly enjoyed learning about chainsaws and the whole process of putting together an in-house exhibit. Being able to see all the hard



constructed stands for the outboards so they’d feel right at home in gallery.

Field’s hope is that everyone who visits “has a good time, and learns a little something new. These two labor saving devices had a profound impact on the way we live our life up here, and I hope people are able to appreciate that.”

Former interns Amanda Poteet and Jena Love assisted with the research and installation of this exhibition. Neither intern had any prior knowledge of

work come to fruition was very satisfying.” said Love.

After viewing the exhibit some visitors may discover a new appreciation for an old outboard or chainsaw sitting in their own garage or shed.

Get Your Motors Running: Chainsaws and Outboards on the Last Frontier is on display through November 19, 2011.

Photo credits: (Above left) Beginning installation; (Left) Preparing the outboard stands; (Above) chainsaw in mount. Images taken by Museum staff.

Volunteers on View



Joel Probst

When Joel first came to the Museum to interview as a prospective walking tour guide and front desk volunteer, the staff instantly recognized his passion and energetic attitude for all things Juneau History. Independently consuming facts and stories from all resources on Juneau-Douglas history, Joel adds a comedic flair to his walking tours and interactions with summer guests, sharing his passion for history with visitors, museum staff and other volunteers. His tours are truly unique, interesting, and informative.

Whether it's leading a pack of visitors down Franklin Street in the pouring rain, dishing up stories of The Bird Man of Alcatraz to folks in the galleries, or taking time to detail the features of the topographical map, Joel puts genuine energy and enthusiasm into all he does at JDCM. We have been so lucky to have Joel with us this summer as our newest ambassador of Juneau history.



Susan Baxter

A long-time educator in Juneau, Sue Baxter began coming to the Museum with volunteer and friend Patty Winegar in the late spring of 2011. Since then Sue has already become a rooted member of the JDCM volunteering family. Adding her own warm and gentle style of

customer service with summertime visitors off the cruise ships, Sue doesn't miss a beat multi-tasking between ringing up admission sales, explaining walking directions, or sharing a story about Juneau history. Sue has also been a great resource for staff in redesigning the Museum's history trunk.

When the Museum staff was in need of extra front desk help this September, Sue offered to swoop in and come to the rescue. JDCM is thrilled to turn the spotlight on Sue Baxter - new volunteer and all around kind individual. You can come visit Sue at the front desk as she'll continue to aide staff during the Winter season 2011-2012.

To become a Volunteer at Juneau-Douglas City Museum contact Amanda Chisholm at 907.586.0967 or email Amanda_Chisholm@ci.juneau.ak.us.

The Museum Store

Seeking an assortment of items by local talent in Alaska's Capitol city? Look no further than the Juneau-Douglas City Museum's gift shop as your destination for local wares and historical gifts. Showcasing jewelry, books, and ceramic art, the Museum Store is a perfect place to find unique gifts that come directly from Southeast Alaska artists.

JDCM has begun featuring local artists for month long showcases where the public has an opportunity to visit the Museum gift shop and purchase directly from local artists and crafters. In



June, the Museum

featured five ceramic artists from UAS and their professor Jeremy Kane. The public was invited to visit the gift shop to purchase handmade ceramics while supporting the University's art program and burgeoning ceramicists.

In September, Jenna O'Fontanella, Amy Fletcher, Deb Gregoire and Rebecca Busch joined forces to organize a jewelry showcase entitled *Metalmorphosis*. Over 275 community members showed up to browse and purchase local handmade metal jewelry and support the artistic creativity of these four local women.

The Juneau-Douglas City Museum is excited about continuing to feature local artists and authors throughout the year in the new gift shop space located off of the Leslie Murray Memorial Gallery.



For more information on items and merchandise for sale in the Museum Gift Shop, or to participate in a local artist showcase exhibition please contact Amanda Chisholm at 586-0967 or email her at Amanda_Chisholm@ci.juneau.ak.us. You may also visit our gift shop on-line at: www.juneau.org/parkrec/museum/MuseumStore.php.

Photo credits: Photograph of earrings by Rebecca Busch taken by Liz Gifford. Image of *Metalmorphosis* showcase taken by Museum staff.



Recent Acquisitions May– September 2011

2011.07	Historical Ephemera & Photos Gift of Larry Hayden
2011.08	Drama Programs, 1940s Gift of Marge McCombs
2011.09	Photographs, MV <i>Maybeso</i> , Gift of David Abel
2011.10	Historical Objects Gift of Carl Brodersen
2011.11	Rachael Juezler Sculpture Rasmuson Art Acquisition Fund
2011.12	Collection of Historic Agricultural Implements Gift of Jim & Mary Lou King
2011.13	Painting, MV <i>Endeavor</i> Gift of Fritz Funk
2011.14	Trevor Davis Photograph Gift of Kim Busch
2011.15	2011 Salmon Derby Pin Gift of Dan Beason
2011.16	Wallace & Rogers Circus Poster Gift of Dee Longenbaugh

Photo credit: Friend: Fencepost by Rachael Juzeler. This piece was purchased through the Rasmuson Art Acquisition Fund., JDCM 2011.11.001.

From the Collections Corner...

Have you ever seen one of these around the Museum and wondered what it is? It is a blunder trap and it is designed to catch insects, not to get them out of the Museum, but to survey the population. The Museum operates what is called an Integrated Pest Management System, like an onion, it is complicated when you begin peeling off layers, but at its most basic it is a way for us to check for pests in the Museum and determine if they are dangerous.

Every building has its resident population of bugs. We have spiders and sow bugs - which are actually crustaceans, more closely related to shrimp than flies, shrimp salad anyone? There are all sorts of little flying bugs and the occasional big flying bug, “mosquito eaters” my four year old would call them. We also have a population of spring tails (hexapods) which are found in the rooms along the back of the building. “Snow fleas” are a type of springtail. Jane Lindsey, the Museum Director works very hard with Larry Blatnick, our janitor and Grounds Maintenance and Building Maintenance to keep the back of the building clean and dry so that we keep them under control.

What we don't want are beetles and moths. Some types of beetles and moths are “heritage eaters,” which means they could present a terrible danger to our collections. Bugs like larder beetles and book lice eat the fats and proteins in things like fur, animal materials, paper, glues. These bugs do live here in Juneau. That is why we limit food and drink in the building, don't allow plants and flowers, and inspect packing materials and objects when they come into the facility. We have been fortunate not to have had an infestation in the years I have been here. Lets all work to keep it that way.



Addison Field

Addison Field

Curator of Collections & Exhibits

Past & Present

Newsletter of the Juneau-Douglas
City Museum, located at the corner of
Fourth and Main Streets in Alaska's
Capital City.

WINTER HOURS:

Tuesday-Saturday 10am-4pm
Office hours: 9am-5pm

ADMISSION:

\$4 adults/ youth 12 & under free
Free Winter Admission in October
thanks to the *Pioneers of Alaska Men
& Women's Igloo #6*

CONTACT US:

Phone: 907 586-3572
Fax: 907 586-4512
www.juneau.org/parkrec/museum
Mailing address:
155 S. Seward St.
Juneau, AK 99801

MEET OUR STAFF:

Jane Lindsey, Director
Jane_Lindsey@ci.juneau.ak.us
907-586-0968

Addison Field, Curator of
Collections & Exhibits
Addison_Field@ci.juneau.ak.us
907-586-0965

Alysia Jones, Curator of Public
Programs
Alysia_Jones@ci.juneau.ak.us
907-586-0966

Amanda Chisholm, Museum
Administrative Assistant
Amanda_Chisholm@ci.juneau.ak.us
907-586-0967

Victoria Brown, Museum Intern
Museum_intern@ci.juneau.ak.us
907-586-0969

CITY MUSEUM FALL EVENTS CALENDAR

October

- 7 *Recent Acquisitions '11* opening reception 4:30-7:30p.m. Exhibit will be on display through April 2012.
- 8 *Coffee & Collections: Tour of Get Your Motors Running: Chainsaws & Outboards on the Last Frontier* with Curator of Collections & Exhibits Addison Field, 10:30am at the City Museum.
Coffee provided by Heritage Coffee Company.
- 10 1st Annual Meeting of the Friends of the Juneau-Douglas City Museum. Noon at the City Museum. (See pg. 1 for more info.)
- 18 Museum closed in observance of Alaska Day.

November

- 2, 9 & 16 *Digital Storytelling Class* with Curator of Public Programs Alysia Jones. 6:30-9pm. Cost is \$60.00. Pre-registration & pre-payment required. Call 586-3572 for more information or visit: www.juneau.org/parkrec/museum/classes.php
- 11 Museum closed in observance of Veterans' Day
- 12 *Coffee & Collections: President Harding's Visit to Alaska* with Jim Geraghty, 10:30am at the City Museum. Coffee provided by Heritage Coffee Company.
- 19 *Get Your Motors Running: Chainsaws and Outboards on the Last Frontier* closes.
- 24-25 Museum closed for Thanksgiving Holiday.

December

- 2 *Rasmuson Retrospective* opening reception 4:30-7:30pm. Exhibit runs through January 28, 2012.
- 3 *Coffee & Collections: Half Ton of Trouble: Discussion & Book Signing* with local author James Kohn, 10:30am at the City Museum.
Coffee provided by Heritage Coffee Company.
- 19 Volunteer Holiday Potluck, noon-1:00pm at the City Museum.
- 26 Museum office closed in observance of Christmas holiday.

