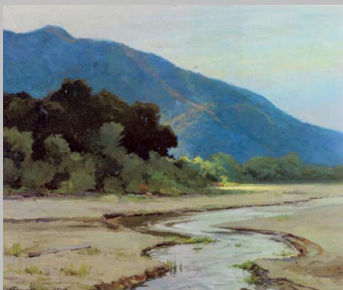


# Juneau-Douglas City Museum

## October News & Events



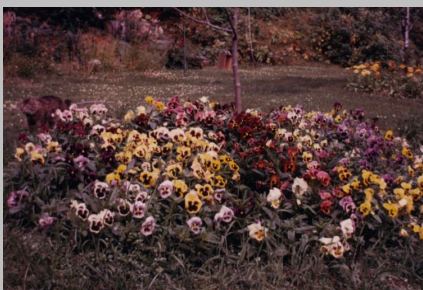
### ***Bend in the River* by Sydney Laurence**

**Acquisition Reception: Friday, October 6th**  
**4:30-7:00pm**  
**Free**

For October's First Friday, the City Museum will host an acquisition reception for the painting *Bend in the River* by Sydney Laurence. Laurence is widely regarded as Alaska's most prominent painter. This landscape, painted in the flats near where the airport is located today, is a fine example of Laurence's work in the Juneau area, his skill, and his dedication to plein-air painting. *Bend in the River* will be on view for the public beginning with this First Friday reception and running through the end of October.

*Bend in the River* has been donated to the Juneau-Douglas City Museum in memory of William D. De Armond, who died in Seattle at the age of 79 on June 28, 2017. Bill is survived by his wife, Malin Babcock. Funds collected exceeded the purchase price of *Bend in the River*, and the Friends will use these additional funds for future Museum Juneau history and art acquisitions in his memory.

Image above: *Bend in the River*, by Sydney Laurence. JDCM 2017.45.001.



### **Coffee & Collections: History of the Juneau Garden Club**

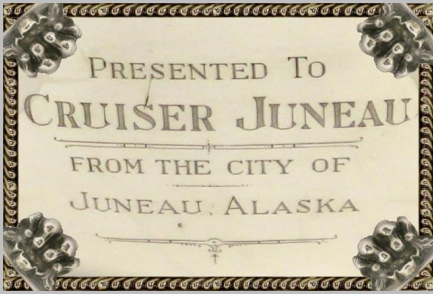
**Saturday, October 7th**  
**2:00-4:00pm**  
**Free**

Elfrida Nord will present her research of the 90-year history of the Juneau Garden Club. Nord began with one question, "Who was C.H. Flory?", and through her subsequent research, she has discovered that the history of the Garden Club parallels the development of the City of Juneau. Over the years, active members such as Marie Drake, Adelaide Holbrook, and Ann Colman never ceased in their efforts to clean-up and beautify downtown Juneau. With new equipment available at the Alaska State Library, Nord has been able to discover new documentation on the Garden Club's history, and her research is ongoing.

Elfrida Nord is a self-appointed historian for Juneau Garden Club. She is a retired nurse who has lived in Alaska since 1970 and in Juneau since 1984. She has been an active member of Juneau Garden Club since her retirement in 1997. She was a major contributor to *Gardening in Southeast Alaska*, 3rd Edition. Besides working on the Garden Club's history, she is a major player in the annual plant sale and is the current Treasurer.

Coffee for this event will be provided thanks to a generous donation by Heritage Coffee.

Image above: Pansy Bed, Caroline Jensen, 1965. Donated by the Caroline Jensen Estate. JDCM 2006.11.432A.



## USS *Juneau* Presentation Silver October 2017 through mid-April 2018

The USS *Juneau* Presentation Silver Set, on loan from the U.S. Navy, will be back out on view starting in October.

The punch bowl, ladle, two candlesticks, and a few cups will be accompanied by the history of the three USS *Juneau* ships, a crew list form the CL-52, a WWII-era

Sullivan Brothers Poster, and a photograph of the CL-52. The Presentation Silver was purchased by the City of Juneau and presented as a gift to the USS *Juneau* CL-52 upon her launching by then Mayor Harry I. Lucas and his wife, who attended the New Jersey based ceremony. October 25th marks the 76th anniversary of the USS *Juneau* CL-52's launching, and this coming November marks the 75th anniversary of her sinking.

A thank you to the Mendenhall Flying Lions for helping the Museum locate the Silver Set and for their assistance in bringing it back to Juneau. The Silver will be on view through mid-April.

Image: Composite image of USS *Juneau* Silver Service Set Punch Bowl inscription and decorative details.



## Valley Library Interactive Exhibit: *History Mystery* Through mid-April 2018

The City Museum's new *History Mystery* exhibit at the Valley Library examines ideas about technology in

relation to the Juneau Public Libraries' Big Read and Discover Tech projects. On exhibit from mid-September 2017 through mid-April 2018 are pieces of technology that were once considered innovative solutions that improved people's quality of life or made a profession's work easier and more accurate. While operational, not all of these objects are still in everyday use, many having been replaced with more technologically-based modern alternatives.

The public is invited to use their imagination and powers of observation to decide what these objects are and to write their own museum labels, either imaginative or historic. Label templates may be picked up at the Valley Library front desk. Completed labels need to be turned in to the library front desk before November 30th. People may fill out and turn in as many labels as they wish. City Museum staff will choose two labels for each object, best historical and most creative, and these will be posted in the display case from January to mid-April.

Image above: Mystery Object #5. JDCM EDU.0682.

## Douglas Library Satellite Exhibit: *Disasters at Home, 1936 Landslide* Through mid-April 2018

This exhibit features eight photographs of the 1936 landslide that covered sections of downtown Juneau, text



describing this historic event, and a word cloud generated from newspaper articles from the day. Also in the exhibit are first aid related items from the City Museum's collection. The exhibit is on display through April 2018.

Image above: *Landslide*, by Trevor Davis, 1936. From the Wallis George collection donated by Carol Zebold. JDCM 2013.14.145.

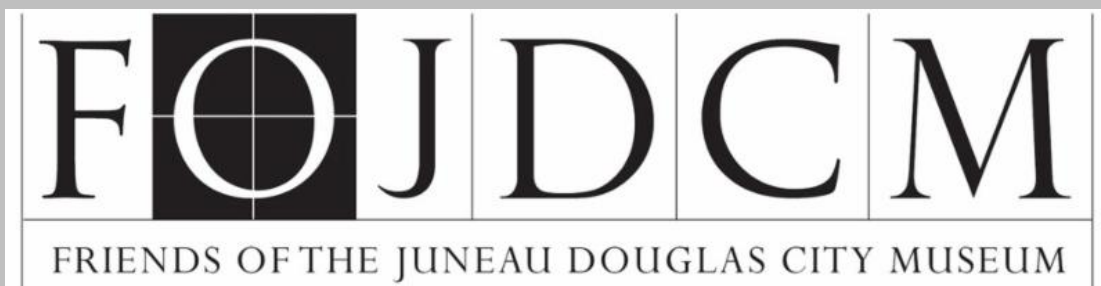


**1867-2017: 150 Years of Change,  
Áak'w Aani (small lake tribe land) at the Time of Purchase**  
On exhibit in the City Museum entryway through March 2018

2017 marks the 150th year since the United States purchased Russian interests in Alaska. Governor Bill Walker issued a proclamation designating 2017 as a “Year of History and Heritage” in recognition of Alaska’s sesquicentennial. All Alaskans are encouraged “to study, teach, reflect upon our past, and apply its lessons to a brighter, more inclusive future.”

What was Juneau like 150 years ago at the time of the purchase? Who lived in this area, and how did the land look compared to today? The Museum worked with naturalist Richard Carstensen to produce three panels titled “1867-2017: 150 Years of Change, Áak'w Aani (small lake tribe land) at the Time of Purchase.” These panels, funded by the Friends of the Juneau-Douglas City Museum in connection with Discovery Southeast, are on display in the Museum's entryway and help us understand our history and the land we live on.

Images above: Photos and digitally created images by Richard Carstensen, 2017.



**Invest in your community's history and art.**  
**Become a 2017 Member of the**

## Friends of the Juneau-Douglas City Museum

Visit <https://fojdc.org/> for more information about membership level benefits, to become a member, and check out what the Friends are up to.

### Museum Fall and Winter Hours

***Tuesday-Saturday 10:00am-4:00pm***

Closed October 18th for Alaska Day

#### ***Free October Admission***

Thanks to a generous donation by  
Pioneers of Alaska Men's and Women's Igloo #6

Visit our website

Call us at 907 586-3572

The Juneau-Douglas City Museum fosters among its diverse audiences an awareness of Juneau's cultural heritage, values and community memory so we may draw strength and perspective from the past, inspire learning, and find purpose for the future. As a public trust, we collect, preserve, interpret, and exhibit those materials that document the cultures and history of the Juneau and Douglas area.

### **STAY CONNECTED on the Friends' Facebook page**

Each week we post *Who's Who Wednesday*, portraits from the J. Alexander collections, and *ThrowBack Thursday*, a look at Juneau's past through our Museum's collection.

**Can't Make it to the City Museum?** Check out our online opportunities to explore, remember, reminisce, and learn at:  
<http://www.juneau.org/library/museum/junhist.php>.

