

# Past & Present

Juneau-Douglas City Museum: Collecting, preserving and interpreting Juneau-Douglas history and culture

Volume 15, Issue 2

May 2011

## Support a Community Legacy: Become a Friend of the Juneau-Douglas City Museum

For years, community members and visitors who experience and appreciate the dynamic threads of our creative artist's and enduring stories have asked if the Juneau-Douglas City Museum has a Friends group that they can join to show their support.

We are now able to offer a Friends membership to support our mission and help guide the Museum's future. The Friends of the Juneau-Douglas City Museum 501c3 has already successfully raised funds and won at auction, Sydney

*Cont. on pg. 3*

### INSIDE THIS ISSUE:

<i>Juneau History Grants</i>	2
<i>New Exhibits</i>	2
<i>Lighting Upgrade and New Gift Shop</i>	3
<i>Juneau History Grants</i>	3
<i>Volunteers on View</i>	4
<i>New Museum Store</i>	4
<i>Recent Acquisitions</i>	5
<i>Collections Corner</i>	5
<i>Meet the Interns</i>	6
<i>Calendar of Events</i>	7

## Get Your Motors Running: Chainsaws and Outboards on the Last Frontier



Museum Staff in the *Get Your Motors Running* exhibit. Left to right: Museum Administrative Assistant, Amanda Chisholm; Interns Amanda Poteet & Jena Love; Director Jane Lindsey; Curator of Collections & Exhibits Addison Field; and Curator of Public Programs, Alysia Jones.

All of us at the City Museum are shifting gears and ready to go for our new summer exhibit *Get Your Motors Running: Chainsaws & Outboards on the Last Frontier* opening on Museum Day, May 14<sup>th</sup> from noon to 5pm.

*Get Your Motors Running* explores two inventions, the chainsaw and outboard motor, both significantly changed life in Juneau. The exhibit charts the technology, and celebrates these two little internal combustion engines that changed life so much in this country.

Before the chainsaw, tasks involving harvesting

wood for various purposes were arduous and never ending. Two man crosscut saws, also known as *misery whips*, and axes were used to fell and buck timber needed for survival. These tools were improvements over stone mauls, used to split branches, but still not as effective as the chainsaw. Come and see various crosscut saws, a buck saw, logging equipment, and chainsaws made by Mall, IEL, Pioneer and McCulloch.

Getting around the saltwater passageways of Alaska's Inside Passage has always been challenging. The Tlingit

carved canoes from trees and used paddles and sails. Sails were followed by steam, but this had little impact on Juneau. The introduction of small outboard motors however, changed how residents traveled by water. The exhibit displays paddles, oars, paintings, and vintage outboards made by Johnson, Mercury, and Evinrude.

Learn about the mechanics of chainsaws and outboards and their use in the Juneau area. Manufacturer's history is provided along with specifications, including horsepower, weight, and stroke.

Hands-on activities teach visitors about crosscut saw tooth patterns and different types of paddles. This exhibit is fun and informative for the whole family.

**Honeymoon Tonight** is also opening on Juneau Museum Day. Inspired by color field painting and Helmar's early childhood experiences commercial fishing with her family around Juneau and Icy Straits. This collection of photographs includes seven images printed on and framed in metal.

*Cont. on pg. 2*



Patrice Helmar received her Bachelor of Arts in English with an emphasis in Creative Writing and Minor in Visual Arts from Southern Oregon University. She has had solo exhibitions at the Juneau Arts and Humanities Council, Alaska State Museum Store, Two Crow Studio and Gallery, and the Fireweed Gallery in Gustavus. She received an Individual Artist Grant from the Juneau Arts and Humanities Council (JAHC) and an Honorable Mention in the Juried Art

Exhibition for a photography fine art piece at the JACC in 2009. She was selected for this exhibition through our solo artist application process. The exhibit closes September 26, 2011.

In addition to our blockbuster summer exhibit and solo artist exhibit, there are several other recent exhibit changes:

**Outdoor Recreation: Skiing & the Dan Moller Cabin** highlights the important role of wilderness cabins to recreation in Juneau. A Charter member of the Juneau Ski Club,

Dan Moller came to Juneau in 1934 as the general Emergency Conservation Work (ECW) foreman for the US Forest Service. He was in charge of Civilian Conservation Corps (CCC) work crews that constructed the trail to Second Meadow, the site of the 1st ski area in Juneau and the original

cabin that later bore his name. The cabin was determined to be eligible for the National Register of Historic Places for its association with the Civilian Conservation Corps, for its role in development of the growth of recreation and skiing, and its long association with the Juneau Ski Club. Following the USFS's assessment of the cabin, they approached the City Museum to help interpret this important part of Juneau history since the cabin could not be saved. The exhibit features photographs, information, and objects from the cabin.

a mineral id station; miner's hats and ID tags. You can even turn the crank of our miniature stamp mill and see the process used to crush ore rock taken out of the mine.

**John Hyde: Mendenhall Glacier & Juneau Ice Field Photos** is a collection of photos of the Mendenhall Glacier and Juneau Ice Field that were purchased by the Juneau-Douglas City Museum with funding from the Rasmuson Foundation. John Hyde has been photographing wildlife and the dynamic environment of Juneau



**Drilling & Milling: Hands-on Mining** is a self-exploration room, introducing people of all ages to Juneau's early mining history and mining practices in a fun and interactive museum environment. The exhibit includes a model of Treadwell with sliding panels depicting the infamous cave-in in 1917; a weights and measures station with activity sheets;

and Alaska for over 30 years. The photos "are visual representations of the worlds that capture my attention during visits to this ever changing world of rock, water, ice and snow" says Hyde.

*Cont. from pg. 1.*

Laurence's *Early Morning Juneau*, an original oil painting, c1920 which now resides in the Museum's collection.

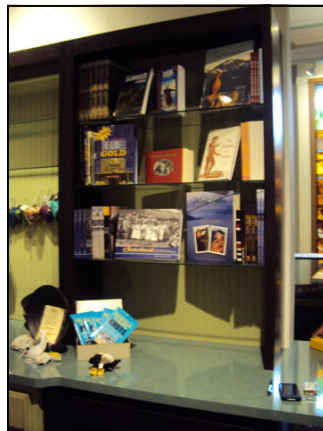
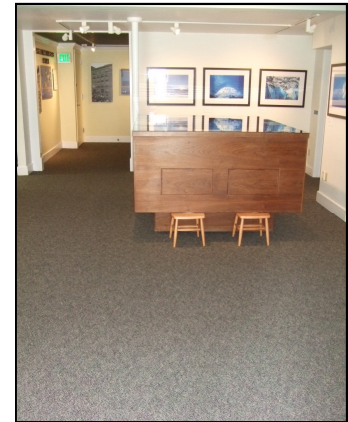
Important Juneau history and art acquisitions are just one way the Friends can support the Juneau-Douglas City Museum. Public comments indicate the community would like to see upgraded display cases, more of our collections displayed, and more exhibits mounted. Other comments express a desire for more public receptions, community programs, and history lectures.

Members receive great benefits and are eligible to serve on the Board of the FoJDCM. Until July 1st, 2011 we are offering charter membership and encourage all of you to join our growing numbers of charter members. Most importantly, at any level, membership supports our community's legacy, and we invite you to be a part of this. Help our institution reach a little higher to support, protect, and promote Juneau and Douglas history, art, and culture.

For information about the Friends of the Juneau-Douglas City Museum visit [www.juneau.org/parkrec/museum](http://www.juneau.org/parkrec/museum) or call 586-3572.



## LIGHTING UPGRADE AND RECEPTION DESK AND GIFTSHOP REMODEL ALMOST FINISHED



## JUNEAU HISTORY GRANTS CALL FOR PROPOSALS

It is time to submit your application for the Juneau History Grant. Don't miss out on this amazing opportunity to receive assistance for a project involving the history of the Juneau area.

The Juneau History Grant is a monetary grant (up to \$1,000) made possible by an endowment from the Juneau Centennial Committee, and most recently a gift of \$15,000 from the Capital City Celebration Commit-

tee. The grant provides funding for projects by all ages who wish to research, write, photograph, or in some other way document, preserve, or improve access to the history of the Juneau area. A project may consist of public presentations, performances, a research paper, bibliography, model, booklet, photographs, recordings, or utilize computer technology.

Individuals, school groups, and organizations

are invited to apply. Proposals on all Juneau area topics are welcome.

Applications for the Juneau History Grant are available at <http://www.juneau.org/parkrec/museum/grant.php> and at the Museum's front desk.

Applications must be received by **4:00pm, Monday, June 13, 2011.**

For more information, contact Alysia Jones at (907) 586-3572 or email

[Alysia.Jones@ci.juneau.ak.us](mailto:Alysia.Jones@ci.juneau.ak.us).

## Volunteers on View

**Patty Winegar**, long time Juneau resident and retired elementary school teacher has given her time and expertise at the Museum front desk over the last few years. Patty is gracious and positive and delivers stellar customer service with a story or two while working her weekly shifts at the reception desk.



Quick to fill in and help out, the Museum is incredibly lucky to have a volunteer like Patty on our yearly roster. Staff are thrilled by her skilled knitting projects which she brings in to work on during slower winter months. Rain, Snow, Sun, and Sleet - Patty has been an invaluable part of our front desk team clocking in over 170 hours since she began volunteering. It's because of volunteers like Patty that the Museum is such a great resource for local history and wonderful guest services.

***Help foster awareness of YOUR local history & cultural heritage. Become a Volunteer***



Do you love local Juneau history? Do you enjoy talking to people? Does the thought of working in the midst of exhilarating artifacts and art objects interest you? The Juneau-Douglas City Museum is currently seeking volunteers for the summer season. Volunteers usually average 3 hours a week, and receive great benefits! Join the Juneau-Douglas City Museum family and join our volunteer roster. Questions on how to get started? Call Amanda Chisholm at 586-0967, or email [Amanda\\_Chisholm@ci.juneau.ak.us](mailto:Amanda_Chisholm@ci.juneau.ak.us) for more information.

## Come see the *NEW* Museum Store



As the trees and flowers transform with the onset of Spring, so does the gift shop at Juneau-Douglas City Museum. We are thrilled to welcome not only a new location but also a new complete structural layout of our retail area.

As the season moves into high gear we will begin introducing new and exciting inventory items for sale during the busy months ahead. With new lighting, shelving, storage, and displays, the Museum will blossom with fresh new local items to entice both the seasonal traveler as well as our local patrons. New items like locally made jewelry, tote bags, art prints, handmade stationary, and local ceramic art, the gift shop's offerings will be enhanced by the new layout.



Ceramic mugs by UAS student artist Andrew Heist provides an example of the type of work to be expected in the showcase.

The City Museum Gift Shop will be hosting a special reception and opening of the *University of Alaska Southeast Summer Ceramics Showcase* on Friday, June 3<sup>rd</sup> from 5-7pm. This showcase will display the work of five UAS student artists and their professor Jeremy Kane.

*Stay tuned for new merchandise and gift shop events. Don't forget, the Friends of the Juneau-Douglas City Museum offer a choice of gift shop discounts with Membership levels.*

## Recent Acquisitions

January-April 2011

2011.01 Tool Collection, Gift of Mary Ann Parke

2011.02 *Ninth Street Winter Sun & Village Street Snow*  
by Barbara Craver, Rasmuson Art Acquisition Fund

2011.03 *Evolution 2010* by Puanani Maunu,  
Rasmuson Art Acquisition Fund

2011.04 Juneau Ice Field & Mendenhall Glacier  
Photographs by John Hyde, Rasmuson Art  
Acquisition Fund

2011.05 Historical Material, Gift of Mike Frank

2011.06 Photographs by Jack Hermle,  
Rasmuson Art Acquisition Fund



## From the Collections Corner...

What a busy winter we have had. If you haven't been by the Museum in a while, come on up, you will hardly recognize the place. In all this activity I have found that there is room for a couple of volunteers to help with collections and exhibits projects. These volunteer opportunities are a little unique in that we don't need you to come to the Museum every week, rather, we need your skills.

The first opportunity is for someone who likes to sew and stitch. There are times when we need things made from fabric, such as padded covers for a clothes hanger on which we can store garments. During exhibits, we often need Velcro hanging attachments stitched to textiles in the collection. At other times, when someone donates a large object, like a table or chair, we need dust covers made up. We will provide the materials and details about the end product, but we need your skills. If this sounds like the kind of thing you would enjoy helping with three or four times a year, please let us know.

For the volunteer interested in history, we need filing done about once a quarter. If you would like to spend a couple of hours reading and filing history paperwork into our reference files this opportunity is for you.

Lastly, I need a handy-man's help. As those of you who have been downstairs know, we just don't have the space for a full workshop. Yet there are lots of projects that we would like to do that require some degree of wood working skills. For example, while preparing one of the interactives for *Chainsaws & Outboards*, we decided we wanted cut-out examples of crosscut saw tooth patterns. I did it, but I wasn't happy with the result and I'm sure there are folks out there who could have done a better job with a lot less effort. Again, we would provide tools and guidance, all we would need from you is your expertise.

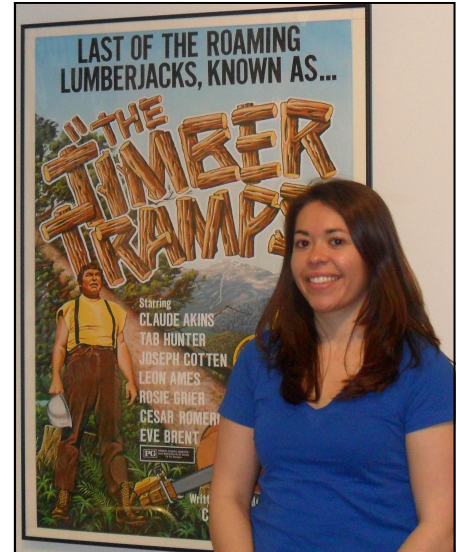
If you are interested in any of these collections and exhibits related volunteer opportunities, please don't hesitate to contact me.

Addison Field  
Curator of Collections & Exhibits

## Current & Incoming Interns

This February we received two interns, Jena Love and Amanda Poteet, from Texas Tech University. Both are currently working on their Masters degrees in Museum Science. Though it has taken them some time to acclimate to the Juneau's weather they are settled in and busy at work on various projects at the Museum.

**Jena Love** was born and raised in Raton, New Mexico, which is in the northeast corner of the state on the Colorado border. She graduated from Iowa State University with a Bachelor's of Science in History. While visiting the British Museum in London she decided she wanted to work in a museum. She started in the Museum Science Master's Program at Texas Tech University in 2009 and will graduate this August. After graduation she hopes to get a job in a small museum working in education. Some projects she has worked on at the City Museum include hanging the 12x12 exhibit, research, prep and installation of the *Get Your Motors Running* exhibit, creating and updating the Friends of the Juneau-Douglas City Museum Facebook page, publicity, and helping with education group tours. While in Juneau she plans to experience all things outdoors and enjoy the many hours of daylight.



**Amanda Poteet** is from McKinney, Texas which is an hour north of Dallas. She completed her Bachelor of Arts in Anthropology at the University of North Texas. She volunteered and then worked as a Curator at Chestnut Square Historical Village before beginning graduate school at Texas Tech. Amanda will also graduate in August after completing her internship in Juneau. She hopes to eventually become a director of a small museum or non-profit.

Amanda has been researching the outboard side of *Get Your Motors Running* exhibit and helping with the installation. She also helped with the installation of the 12x12 exhibit. In collections she has been keeping busy with cataloging, housing old exhibits and new items, and making labels. On the educational side of the Juneau-Douglas City Museum Amanda has written and designed press releases and e-flyers for different museum events, and helped with educational tours and classes.

Jena and Amanda will be working at the City Museum through Friday, August 19, 2011.

**Coming in August** is our newest intern, Victoria Brown. Victoria completed her Bachelor of Fine Arts in Studio Arts in the College of Design at Iowa State University in August of 2009. She is fluent in English and Russian, and translated Russian material into English while working at the Iowa State Parks Library. Victoria also worked on conservation of Native American artifacts and is looking forward to seeing and learning more about Alaska's treasures.

The City Museum looks forward to welcoming Victoria in late August.

## Past & Present

Newsletter of the Juneau-Douglas City Museum located at the corner of Fourth and Main Streets in Alaska's Capital City.

### SUMMER HOURS:

Monday-Friday 9am-5pm

Saturday & Sunday 10am-5pm

### ADMISSION:

\$4 adults / Youth 12 & under free

### CONTACT US:

Phone: 907 586-3572

Fax: 907 586-4512

[www.juneau.org/parkrec/museum](http://www.juneau.org/parkrec/museum)

Mailing address:

155 S. Seward St.

Juneau, AK 99801

### MEET OUR STAFF:

**Jane Lindsey**, Director

[Jane\\_Lindsey@ci.juneau.ak.us](mailto:Jane_Lindsey@ci.juneau.ak.us)

907-586-0968

**Addison Field**, Curator of Collections & Exhibits

[Addison\\_Field@ci.juneau.ak.us](mailto:Addison_Field@ci.juneau.ak.us)

907-586-0965

**Alysia Jones**, Curator of Public Programs

[Alysia\\_Jones@ci.juneau.ak.us](mailto:Alysia_Jones@ci.juneau.ak.us)

907-586-0966

**Amanda Chisholm**, Museum Administrative Assistant

[Amanda\\_Chisholm@ci.juneau.ak.us](mailto:Amanda_Chisholm@ci.juneau.ak.us)

907-586-0967

**Amanda Poteet**, Museum Intern

[Museum\\_Intern@ci.juneau.ak.us](mailto:Museum_Intern@ci.juneau.ak.us)

907-586-0971

**Jena Love**, Museum Intern

[Jena\\_Love@ci.juneau.ak.us](mailto:Jena_Love@ci.juneau.ak.us)

907-586 0969

## CITY MUSEUM SUMMER EVENTS CALENDAR

### May

14 **Juneau Museum Day** Noon-5pm, Free, reception sponsored by the Friends of the Juneau-Douglas City Museum

16 **Meet the Composers** with Claire Daly and Steven Hudson, who will discuss the upcoming World Premiere of *The Mary Joyce Project: Nothing to Lose* at 7pm. This free program is co-sponsored by Juneau Jazz & Classics

31 Museum closed in observance of Memorial Day.

### June

1 Solo Artist Applications for Fall 2011/Winter 2012 available at the City Museum's front desk and at:

<http://www.juneau.org/parkrec/museum/SoloArtistExhibit.php>

3 UAS Summer Ceramics Showcase: Opening and Reception, 5-7pm

8 *Sydney Laurence: Painter of the North* presentation by Keslar Woodward 7pm, at the City Museum. This is a free program.

14 Juneau History Grant applications DUE. *See page 3 for details.*

TBA Mining Lecture with Jim Geraghty, co-sponsored by Hecla-Greens Creek Mining Company.

### July

4 Museum closed in observance of July 4th Holiday.

TBA Annual JCVB & JDCM volunteer summer get-together.

### August

8 -12 Juneau Explorers Week summer kids program for youth 8-11, Monday - Friday, 12:30pm-4:30pm. *Information available in June.*

15 Solo Artist Applications DUE for the Fall 2012/ Winter 2013 season.

