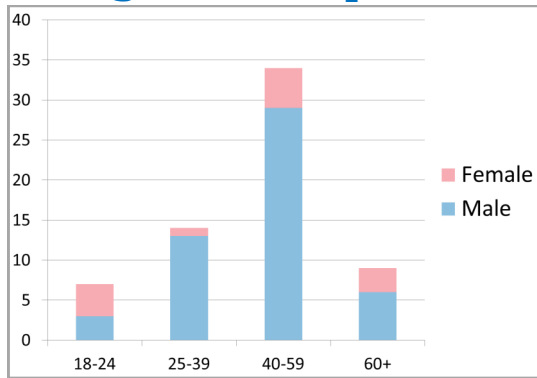


Vulnerability Index Survey Results

In September, 2015, the Glory Hole Shelter organized Juneau's second Vulnerability Index Survey of the local homeless population. Approximately 50 volunteers spent two days administering surveys to individuals who are experiencing homelessness. This is the second survey the Glory Hole has completed in the last three years. Volunteers surveyed a total of

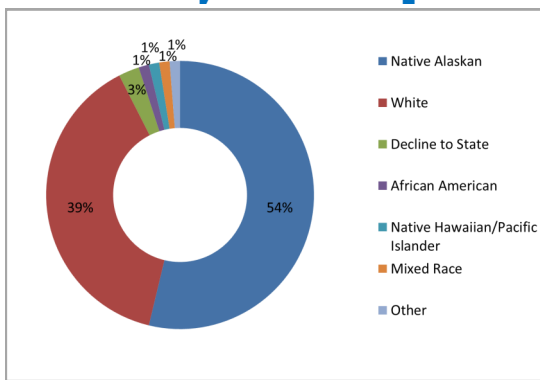
69 unique individuals

Age of Participants



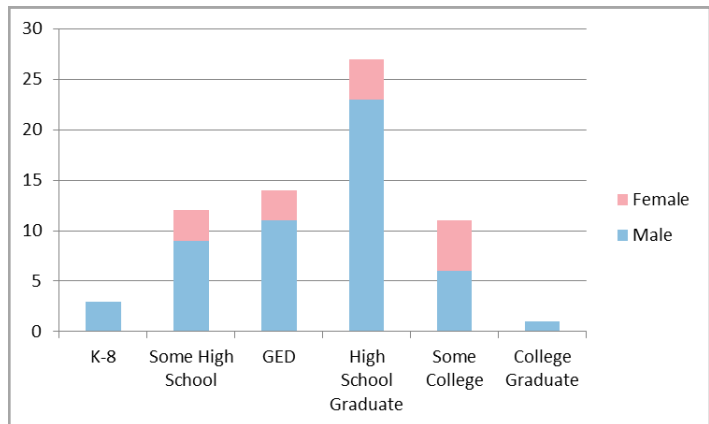
The average age of survey participants was **45.17 years**.

Ethnicity of Participants



Native Alaskan was the most common ethnicity (54%) followed by **White** individuals (39%).

Education of Participants



Over 75% of the survey participants had a minimum of a **high school diploma or GED**. By comparison, the 2013-2014 State of Alaska Report Card to the Public cites only a **71.1%** statewide high school graduation rate.

Number one reported reason for being homeless.....

JOB LOSS

Sources of Income

Source of Income	Total
Food Stamps	27.82%
Work, off-the-books	18.80%
Work, on-the-books	14.29%
Public Assistance	9.02%
SSDI/SSA	8.27%
SSI	7.52%
No Income	5.26%
Drug Trade	2.26%
VA	1.50%
Recycling	1.50%
Pension/Retirement	1.50%
None of the Above	1.50%
Panhandling	0.75%

87%

report that they live in Juneau year-round

68%

born, go to school, work, or have family in Juneau

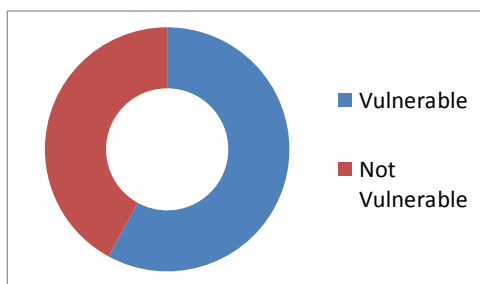
The majority of Individuals...



... indicated that they **sleep** either outdoors or in a vehicle. Only 40% are utilizing our current shelter system or indicated couch-surfing at a friend or family member's house. The high percentage of individuals sleeping outdoors either don't meet the requirements for shelter or are waiting for more beds to become available.

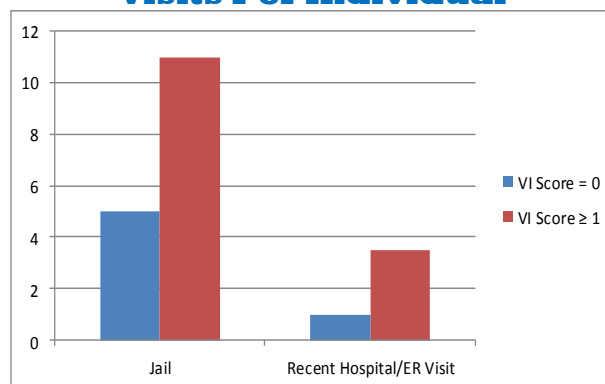
JUNEAU'S most vulnerable population

The Vulnerability Index is a tool that ranks individuals in order of the highest risk for premature death. If an individual score (VI Score) is 1 or higher they are considered to be vulnerable. This measurement has been widely utilized, most notably so in the 100,000 Homes Campaign, an effort to house the most long term and vulnerable homeless people in the nation. Studies have shown that vulnerable individuals are 40% more likely to prematurely die.



40 out of 69 individuals had vulnerability scores of 1 or more. This represents over half of the total surveyed population (57%).

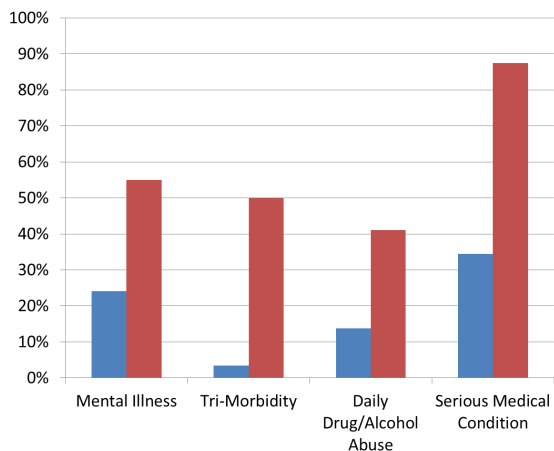
Average Jail and Medical Visits Per Individual



In addition to increased health risks for the individual, higher vulnerability scores also correspond with added public expenses in the form of increased jail and medical spending. While 97% of the total individuals reported having been to jail, vulnerable individuals have been jailed significantly more frequently than their non-vulnerable counterparts.

Vulnerable individuals are homeless for an average of 9 Years and 4 Months

High vulnerability scores predict premature death



The data from the current survey show a staggering difference in health between vulnerable and non-vulnerable individuals. Vulnerable individuals were found to be:

- **2 times** more likely to have been treated for **Mental Illness**
- **3 times** more likely to **Abuse Drugs/Alcohol** on a daily basis
- More than **2 times more likely** to have experienced a **Serious Medical Condition**
- **14 times** more likely to be experiencing **Tri-Morbidity**, the combination of mental illness, substance abuse, and a third major health condition

For more information contact

The Glory Hole - 907-586-4304 or

the AMHB & ABADA Board - 907-465-8920

