



**ADDENDUM TO THE CONTRACT**

for the

**BARTLETT REGIONAL HOSPITAL BEHAVIORAL HEALTH FACILITY  
Contract No. BE21-149**

**ADDENDUM NO.: FOUR**

**CURRENT DEADLINE FOR BIDS:**

March 16, 2021

**PREVIOUS ADDENDA: THREE**

**ISSUED BY:**

City and Borough of Juneau  
ENGINEERING DEPARTMENT  
155 South Seward Street  
Juneau, Alaska 99801

**DATE ADDENDUM ISSUED:**

**March 12, 2021**

The following items of the contract are modified as herein indicated. All other items remain the same. This addendum has been issued and is posted online. Please refer to the CBJ Engineering Contracts Division webpage at: <http://www.juneau.org/engineering ftp/contracts/Contracts.php>

**CLARIFICATIONS:**

Question: *"On SECTION 00310- BID SCHEDULE, delivered in addendum 3 there are two options. Am I supposed to put in two bid amounts?"*

Response: Bidders have the option of providing an amount for each construction schedule. If the bidder only wants to provide a bid number for one schedule option, the bidder needs to write **NO BID** on the applicable line.

Question: *"Sheet G1.0 Note #3 contractor to minimize access thru the hospital road. Does this mean for the demo and excavation and fill you can't use the current road?"*

Response: No, access to the site via Hospital Drive is acceptable. However, this road will be under construction in the spring so Contractors are encouraged to access site from Egan Drive if possible. Access to the Emergency Department entrance/ambulance bay must be maintained at all times.

Question: *"Note #5 access from Egan drive. If you can't use the hospital is it expected that a road would be built from the Egan drive side?"*

Response: No, there is a vacant lot that abuts the south side of the site that is available for Contractor's use to access the site. This property has been used as a staging area for past highway project and is relatively flat so should support vehicle traffic with small improvements to prevent tracking of soils onto road system.

Question: "How many LEED points are Contractor's responsible for?"

Response: A: At the end of Section 018113 there is a table. That table assigns responsibility to Contractor, A/E and items that are a shared responsibility. There are 42 points we are shooting for with an optional additional 20 (only 2 of which are GC responsibility items). We need 40 to achieve LEED V4.1 certification.

- a. There are 2 prerequisites that are Contractor Responsibility, and a third prerequisite with shared Contractor and A/E responsibility.
- b. There are 10 of the 42 points for which the Contractor is responsible for achieving.
- c. There are 2 additional points the contractor could pursue if they find themselves short in other areas.
- d. There is one credit the contractor is responsible for in conjunction with efforts by the A/E
- e. There are two regional credits that will automatically be assigned if the contractor achieves points in other areas.
- f. There is an additional regional point available if the contractor enhances on of the items, they are responsible for.

#### **PROJECT MANUAL:**

Item No. 1 SECTION 238129- VARIABLE REFRIGERANT VOLUME (VRV) HVAC SYSTEM  
PART 2- PRODUCTS Article 2.1 MANUFACTURERS **change** to read as follows:

##### 2.1 MANUFACTURERS

- A. Basis of Design: The system design shown in the contract documents is based on equipment and system designed by Daikin AC; www.daikinac.com.
- B. Systems designed and manufactured by other manufacturers will be considered by Owner under the terms described for substitutions outlined in 012500 SUBSTITUTION PROCEDURES.

Item No. 2 Section 064116 PLASTIC LAMINATE-CLAD ARCHITECTURAL CABINETS:

**Delete** the following:

- PART 1
  - ARTICLE 1.4, C, 2
  - ARTICLE 1.6, A
  - ARTICLE 1.7 A, 1
  - ARTICLE 1.7, B, PART 2
  - ARTICLE 2.1, A, 1, PART 3
  - ARTICLE 3.3, A, 1

*AWI's Quality Certification Program will be part of established standards but this project will not require certification.*

Item No. 3 Section 064116 PLASTIC LAMINATE-CLAD ARCHITECTURAL CABINETS: **Add** the following:

*“PART 1, ARTICLE 1.4, paragraph B, note 6. FSC requirement for wood products shall be optional, subject to coordination with the General Contractor should the Contractor choose to include Architectural Cabinets in pursue the FSC credit under Material resources.”*

Item No. 4 Section 275116 PUBLIC ADDRESS SYSTEMS: **Delete** PART 1, ARTICLE 1.7 Quality Assurance, Paragraph A.

### **DRAWINGS:**

Item No. 5 Drawing 3 on sheet S4.1 “STRUCTURAL STUD AND SHEAR WALL DETAILS”, detail note 4: **Change** in its entirety to: “USE MINIMUM .229” X 3” X 3” PLATE WASHERS FOR ALL BOLTS EXCEPT IN LIMITED, NON-SHEARWALL APPLICATIONS WHERE STANDARD CUT WASHERS SHALL BE USED TO ELIMINATE MATERIAL BUILD-UP INTERFERING WITH ARCHITECTURAL DETAILS. THIS USE OF STANDARD CUT WASHERS SHALL BE LIMITED TO SILL PLATE ANCHORAGE ON LEVEL 1 NORTH OF GRIDS E AND EE”.

Item No. 6 Sheet S3.2, titled “STRUCTURAL FOUNDATION DETAILS”, details: **Add** thickened slab edge detail for use at all exposed slab on grade edges associated with Level 0 Parking 001 including at the garage vehicle entry on Grid 1 from Grid B to Grid D, and at (3) sides of the parking overrun slab originating on Grid A and extending approximately 8’ south of Grid A. See attached Structural Sketch SKA-1.

Item No. 7 Sheet A0.2 titled “OPENING SCHEDULES, in DOOR AND FRAME SCHEDULE, general notes: **Add** general note: “10. All glazing shall be safety type. See Section 088000 “GLAZING” for additional detail.”

Item No. 8 Sheet A0.3 titled “OPENING SCHEDULES”, in WINDOW SCHEDULE on general notes: **Add** general note: “5. All glazing shall be safety type. See Section 088000 “GLAZING” for additional detail.”

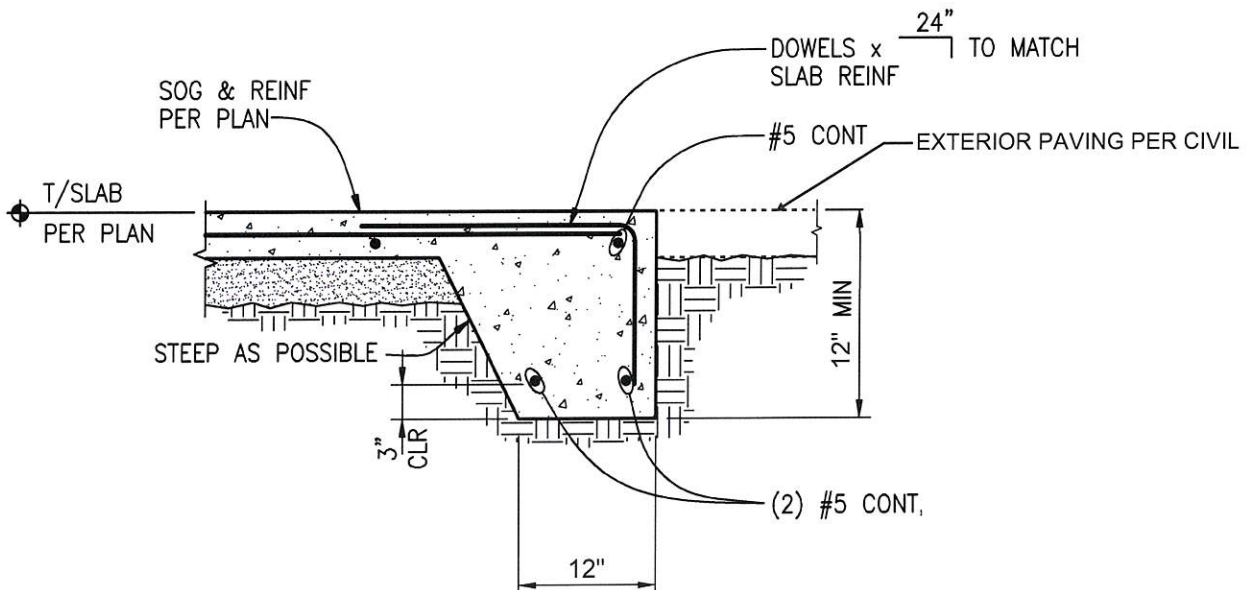
Item No. 9 Drawing 1 on sheet A2.2 “FLOOR PLAN” and Drawing 1 on sheet A2.3 “ROOF PLAN”, detail tags and sheet notes: **Move** detail tags and sheet notes pertaining to low roof from sheet A2.2 to sheet A2.3.

Item No. 10 Drawing 4 on Sheet A4.1, titled, “NORTH ELEVATION”, section cut tag: **Change** section cut drawing reference number from 4/A3.0 to 1/A3.0.

- Item No. 11 Drawings 11, 12 and 13 on sheet A6.3 "INTERIOR ELEVATIONS", drawing titles: **Change** "GROUP 117 NORTH" to "GROUP 111 NORTH"; "GROUP 117 WEST" to "GROUP 111 WEST" and "SPECIAL PROCEDURE 111 NORTH" to "SPECIAL PROCEDURE 112 NORTH".
- Item No. 12 Drawing 4 on sheet A7.1 "DETAILS", wood sill: **Add** metal sill flashing and detail note: "8. 076200 FLASHING WITH VERTICAL, HEMMED DRIP, CONT, BRAKE AT ENDS TO CAP WOOD SILL MEMBER END GRAIN".
- Item No. 13 Drawing 6 on sheet A7.5 "DETAILS", roof overflow drain: **Change** detail note 1 to: "ROOF DRAIN & OVERFLOW DRAIN ASSEMBLIES, INSTALLED AS A SINGLE COMBINED UNIT MOUNTED IN A COMMON TOP-SET DECK PLATE" and **Add** double 2X PT wood blocking (4) sides directly below edge of top-set deck plate.
- Item No. 14 Drawing 4 on Sheet A8.3 "DETAILS", mechanical linework: **Add** sheet note: "7. 233100 DUCT, TYP – ROUTE AROUND BRACES"
- Item No. 15 Sheet E1.0 Legend: Power – **Delete** Duplex Receptacle with "U" for USB port.
- Item No. 16 Sheet E2.2 Room 214 Point of Care – Duplex Receptacle on project south wall – **Delete** and **Replace** with above counter furnished duplex receptacle.
- Item No. 17 Sheet E4.1 Room 129 Office - **Add** Data drop with 2 jacks on project east wall for Multi-functional printer device.

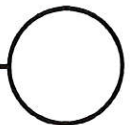
By:   
\_\_\_\_\_  
Greg Smith,  
Contract Administrator

Total number of pages contained within this Addendum: 4



## TYPICAL THICKENED SLAB EDGE

SCALE:  $\frac{3}{4}'' = 1' - 0''$



Sketch #  
SKA-1

Project Name:  
BRH Behavioral Health Facility

Project #:  
19101-0178

By:  
JMO

Date:  
3/5/21

**EDCI**  
ENGINEERS

341 W Tudor, Suite 105 | Anchorage, AK | 99503  
(907) 257-2613

Field Sketch: