



ATTACHMENT #9

MEMORANDUM

TO: Patty Wahto,
JNU Airport Manager

DATE: May 6, 2019

FROM: Catherine Fritz, AIA
JNU Airport Architect

RE: Architect's Report of April 2019 Activity

Sand/Chemical Building & Fueling Station. Concrete foundations and structural steel were completed during April. The contractor's fabrication of wall panels through the winter will allow the shell to be completed quickly. Both the under-slab piping and the roofing are scheduled for completion in May. The construction contract has been paid to 33% completion. A change order is currently being developed to add a Diesel Exhaust Fluid (DEF) dispensing system at the fueling station. JNU's new snow removal equipment uses substantial quantities of DEF that lowers NOx concentration in diesel exhaust emissions, whereas the old equipment did not, thus, the needed change to serve the new fleet. Progress meetings continue on a weekly basis, and the work is being well coordinated.

Terminal Reconstruction. Design Development phase of the project continued through April, along with design services for a separate electrical construction bid package. A utility agreement was executed with Alaska Electric Light & Power to extend a new service at the east end of the terminal building.

The lease lots to the north of the terminal have been finalized (see attached drawing). Alaska Seaplanes is working with JNU Airport Administration to develop Lots 1 and 2 for cargo and operational support. Temporary use of a portion of Lot 2 during the construction period is also being discussed. This request must be balanced with the project's need for construction staging and storage areas.

Several meetings with CBJ Finance and bond counsel have been held to address the project's financial plan and cash flow needs. The 70 (federal funding) to 30 (non-federal funding) ratio for the project funding continues to be refined as the design evolves. The financing plan is expected to be completed soon.

The amendment to the Reimbursable Agreement (RA) with the Federal Aviation Administration for construction services related to equipment relocation was executed in April. The total RA cost is \$411,766.

The public Art Panel reviewed 35 art proposals during April. The five-member panel spent more than ten hours evaluating and discussing the proposals, and then selected four pieces for inclusion in the JNU Terminal Reconstruction project. A summary of the proposals is included as a separate agenda item for the JNU Airport Board's May 14, 2019 meeting.

Development of the temporary office plan for staff and tenants affected by terminal construction continued through April. A meeting with code official, John Young, was held on April 5, 2019 to review the temporary layout of offices and the multi-phasing approach that will be necessary to maintain airport operations throughout construction. Temporary restroom construction work in the existing north wing began in April.

Project Closeouts. The Gate 2 Passenger Boarding Bridge and the Airfield Rescue and Fire Fighting (ARFF) Building Modifications projects are currently in closeout phase.

Other projects/issues worked on by architectural projects staff during April included:

- Punch list on Snow Removal Equipment Facility (SREF) and Wash Bay Addition continued.
- (Belated) letter of thanks was sent to the Dispute Resolution Board for their service on SREF.
- Continued work on the Disadvantaged Business Enterprise (DBE) program.
- Design work for a new secure exit lane system put on hold due to workload.

ATTACHMENT #9



Sand/Chem Building: Steel erection, view from Southeast corner.



Sand/Chem Building: Steel complete; roof decking begins along east side.

ATTACHMENT #9



TRACT "C",
JUNEAU
INTERNATIONAL
AIRPORT
SUBDIVISION

TRACT
"B"

TRACT "A"

PT. NO. 2
NGS - JNU 'C'
N: 49169.627
E: 49059.638

JUNEAU
INTERNATIONAL
AIRPORT
TERMINAL
BUILDING

TRACT
"B"

LOT 3
12,289 S.F.

LOT 2
13,000 S.F.

LOT 1
13,000 S.F.

LOT 4
13,000 S.F.

TRACT "A",
JUNEAU INTERNATIONAL
AIRPORT SUBDIVISION

N: 51167.29
E: 47099.73

PT. NO. 3
NGS - JNU 'D'
N: 50327.604
E: 44681.702

NOTE

THE BASIS OF BEARING WAS OBTAINED FROM THE JUNEAU INTERNATIONAL AIRPORT, RSA IMPROVEMENTS-PHASE 2C. CONTRACT NO. BE18-213 / AIP NO. 3-02-0103-073-2017.

THE BASIS OF BEARING FOR THIS SURVEY IS THE GRID BEARING OF N75°11'04"W BETWEEN NGS CONTROL POINT "JNU C" AND NGS CONTROL POINT "JNU D". BEARINGS WERE ROTATED TO GEODETIC USING THE PROJECT MAPPING ANGLE, -0°45'27". THE BASIS OF LOCAL GRID COORDINATES IS TRIANGULATION STATION "EDDIE" HAVING LOCAL GRID COORDINATES OF N:50000, E:50000. TRIANGULATION STATION "EDDIE" WAS NOT USED OR VERIFIED DURING THIS SURVEY.

TO CONVERT THE LOCAL GRID COORDINATES TO NAD83, ALASKA ZONE 1, STATE PLANE COORDINATES: AT NGS CONTROL POINT "JNU C" APPLY SCALE FACTOR OF 0.99928875 AND APPLY MAPPING ANGLE OF -0°45'27.25" AND TRANSLATE USING +2,333,481.856 N, +2,462,559.262 E.

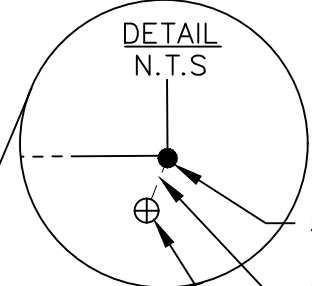
LEGEND

- LEASE LOT BOUNDARY
- BUILDING RESTRICTION LINE
- VEHICLE ACCESS AREA
- PROPERTY LINE (TYP)
- SURVEY TIE LINE
- CHAIN LINK FENCE
- ASPHALT, CURB & SIDEWALK
- EXISTING BUILDING

Q:\24\71035-01\65CAD\Survey\MC-VB-BA-71035 Lease Diagram.dwg PLOT DATE 2019-05-1 15:30 SAVED DATE 2019-05-01 15:29 USER: ncunningham

FEDEX SHIP CENTER
LOT 2, BLOCK "A"
JUNEAU INTERNATIONAL
AIRPORT SUBDIVISION

5/8" REBAR
N: 51769.16
E: 46929.68



5/8" REBAR
N68°11'19"W 1.48'
5/8" REBAR W/ YPC
J.W. BEAN LS 3650



LEASE LOTS 1, 2, 3 & 4, BLOCK "MAY 2019"
WITHIN TRACT "A" & "B", JUNEAU INTERNATIONAL AIRPORT SUBDIVISION
U.S. SURVEY NO. 381 & 1742, AND A.T.S. NO. 716

PROJECT 71035.02
DATE 05/01/2019

EXHIBIT 'A'