

LEGEND

- ★ Location of Interest
- ▭ Study Area
- ▭ Deep-Seated Bedrock Slide

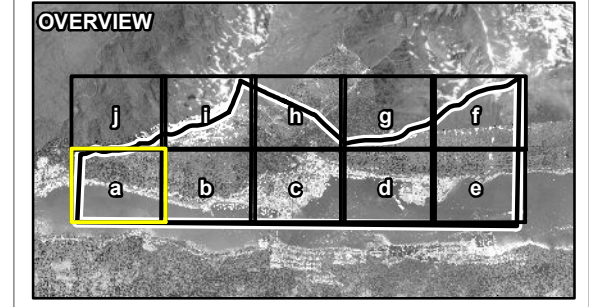
Landslide Hazard

(For Hazard Designation Definitions Refer to Table 1.4 and the Glossary of Terms in the Report)

- Low
- Moderate
- High
- Severe
- Severe if Deep-Seated Bedrock Slide Fails
- " Initiation Zone
- * Runout Zone
- + Potential Initiation Zone for Deep-Seated Bedrock Slide

Base Data

- Index Contour (100 ft)
- Intermediate Contour (25 ft)
- Road
- Land Parcel



NOTES

¹ Engineered slope not evaluated by Tetra Tech for this study

Base data source:
 Contours generated from 2013 LiDAR provided by CBJ.
 Additional contours generated from 2012 LiDAR provided by CBJ.
 Hydrology and roads obtained from Alaska Department of Natural Resources.
 Terrain Classification based on Terrain Classification System for British Columbia, Version 2, 1997.
 Primary imagery provided by CBJ, 2013.
 Background imagery provided by ESRI; Maxar (2020).

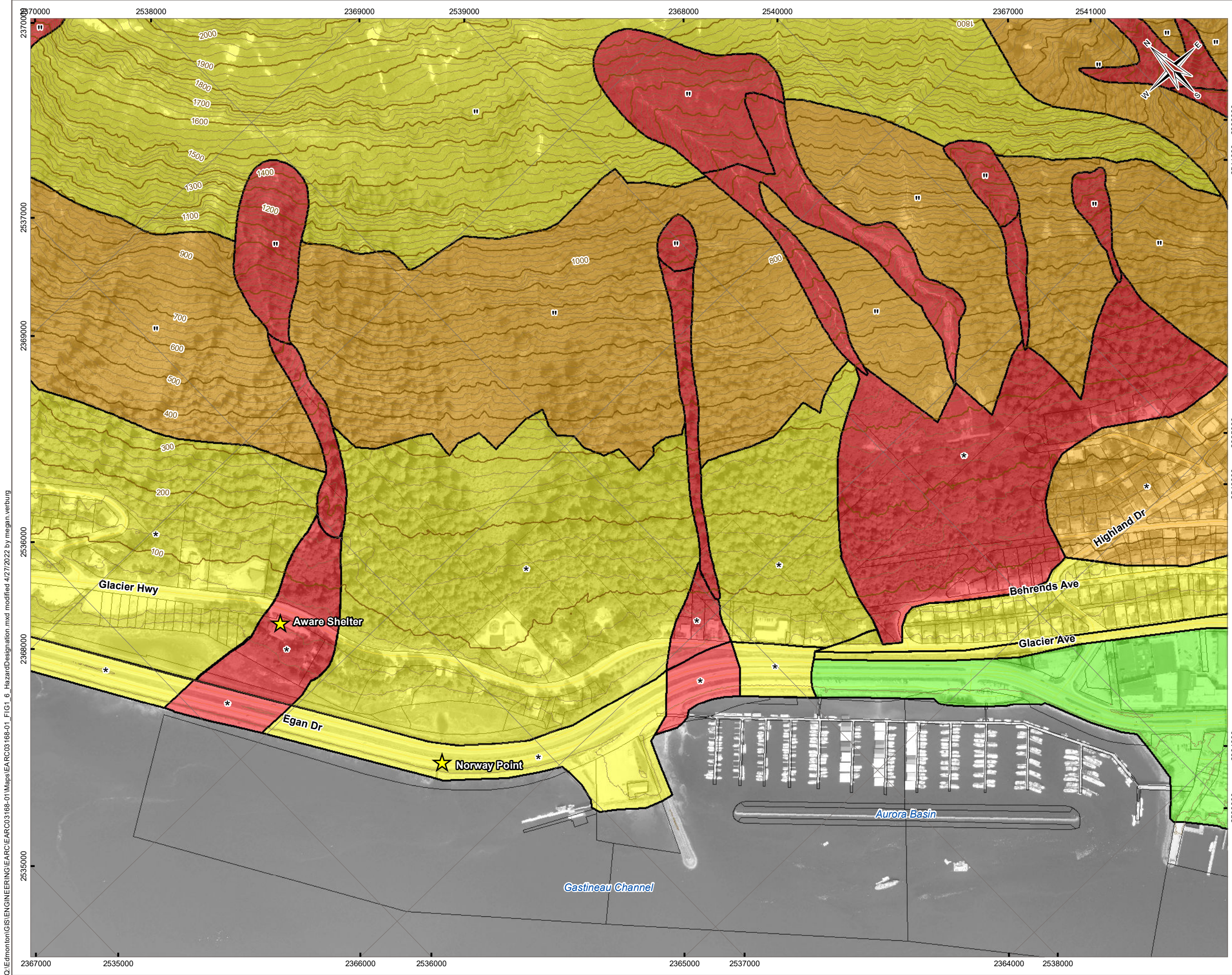
STATUS
ISSUED FOR USE

JUNEAU LANDSLIDE AND AVALANCHE ASSESSMENT

Landslide Hazard Designation Mapping

PROJECTION State Plane Alaska Zone 1 5001		DATUM NAD83		CLIENT CITY AND BOROUGH OF JUNEAU ALASKA CAPITAL CITY
Scale: 1:5,000				
				TETRA TECH
FILE NO. EARC03168-01_FIG1_6_HazardDesignation.mxd		PROJECT NO. ENG.EARC03168-01		
OFFICE TL-EDM	DWN MRV	CKD SL	APVD SM/VER	REV 0
DATE April 27, 2022		Figure 1.6a		

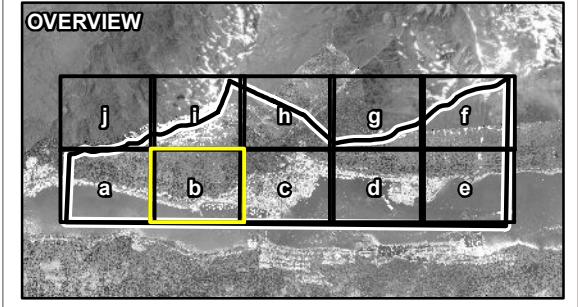
Q:\Edmonton\GIS\ENGINEERING\EARC\EARC03168-01\Maps\EARC03168-01_FIG1_6_HazardDesignation.mxd modified 4/27/2022 by megan.verburg



C:\Edmonton\GIS\ENGINEERING\EARC03168-01\Maps\EARC03168-01_FIG1_6_HazardDesignation.mxd modified 4/27/2022 by megan.verburg

LEGEND

- ★ Location of Interest
- Study Area
- Deep-Seated Bedrock Slide
- Landslide Hazard**
(For Hazard Designation Definitions Refer to Table 1.4 and the Glossary of Terms in the Report)
- Low
- Moderate
- High
- Severe
- Severe if Deep-Seated Bedrock Slide Fails
- " Initiation Zone
- * Runout Zone
- + Potential Initiation Zone for Deep-Seated Bedrock Slide
- Base Data**
- Index Contour (100 ft)
- Intermediate Contour (25 ft)
- Road
- Land Parcel



NOTES
 * Engineered slope not evaluated by Tetra Tech for this study
 Base data source:
 Contours generated from 2013 LiDAR provided by CBJ.
 Additional contours generated from 2012 LiDAR provided by CBJ.
 Hydrology and roads obtained from Alaska Department of Natural Resources.
 Terrain Classification based on Terrain Classification System for British Columbia, Version 2, 1997.
 Primary imagery provided by CBJ, 2013.
 Background imagery provided by ESRI; Maxar (2020).

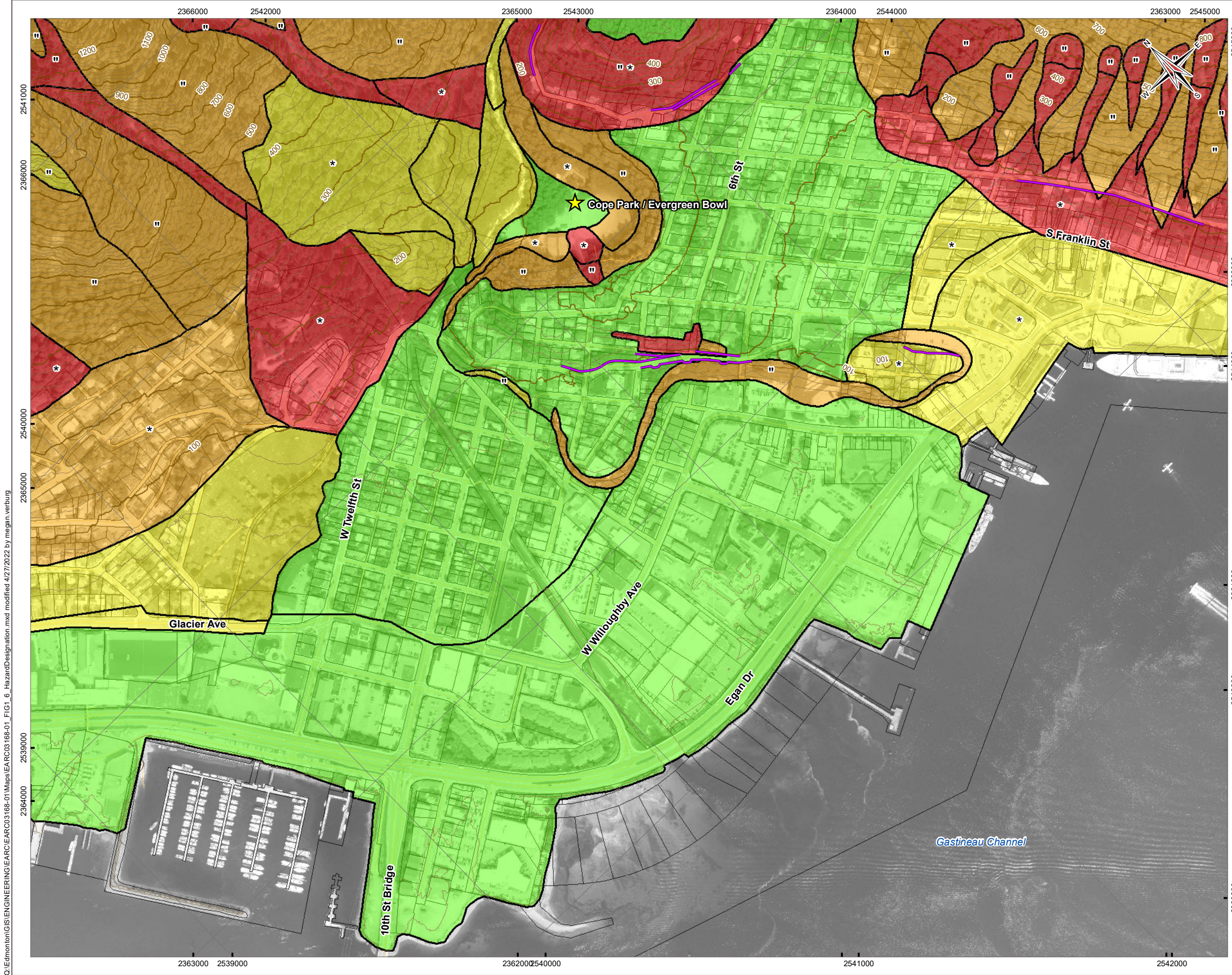
STATUS
ISSUED FOR USE

JUNEAU LANDSLIDE AND AVALANCHE ASSESSMENT

Landslide Hazard Designation Mapping

PROJECTION State Plane Alaska Zone 1 5001	DATUM NAD83	CLIENT CITY AND BOROUGH OF JUNEAU ALASKA CAPITAL CITY
Scale: 1:5,000 300 150 0 300 Feet		TETRA TECH
FILE NO. EARC03168-01_FIG1_6_HazardDesignation.mxd		
OFFICE TL-EDM	DWN MRV	CKD SL
APVD SM/ VER	REV 0	
DATE April 27, 2022	PROJECT NO. ENG.EARC03168-01	

Figure 1.6b



LEGEND

- ★ Location of Interest
- ▭ Study Area
- ▭ Deep-Seated Bedrock Slide
- Engineered Slope¹

Landslide Hazard

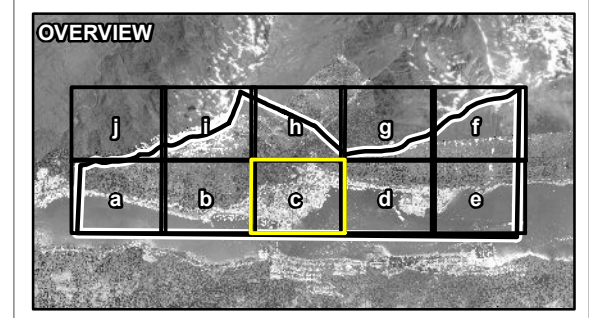
(For Hazard Designation Definitions Refer to Table 1.4 and the Glossary of Terms in the Report)

- Low
- Moderate
- High
- Severe
- Severe if Deep-Seated Bedrock Slide Fails

- ▭ Initiation Zone
- * Runout Zone
- + Potential Initiation Zone for Deep-Seated Bedrock Slide

Base Data

- Index Contour (100 ft)
- Intermediate Contour (25 ft)
- Road
- ▭ Land Parcel



NOTES

¹ Engineered slope not evaluated by Tetra Tech for this study
 Base data source:
 Contours generated from 2013 LiDAR provided by CBJ.
 Additional contours generated from 2012 LiDAR provided by CBJ.
 Hydrology and roads obtained from Alaska Department of Natural Resources.
 Terrain Classification based on Terrain Classification System for British Columbia, Version 2, 1997.
 Primary imagery provided by CBJ, 2013.
 Background imagery provided by ESRI; Maxar (2020).

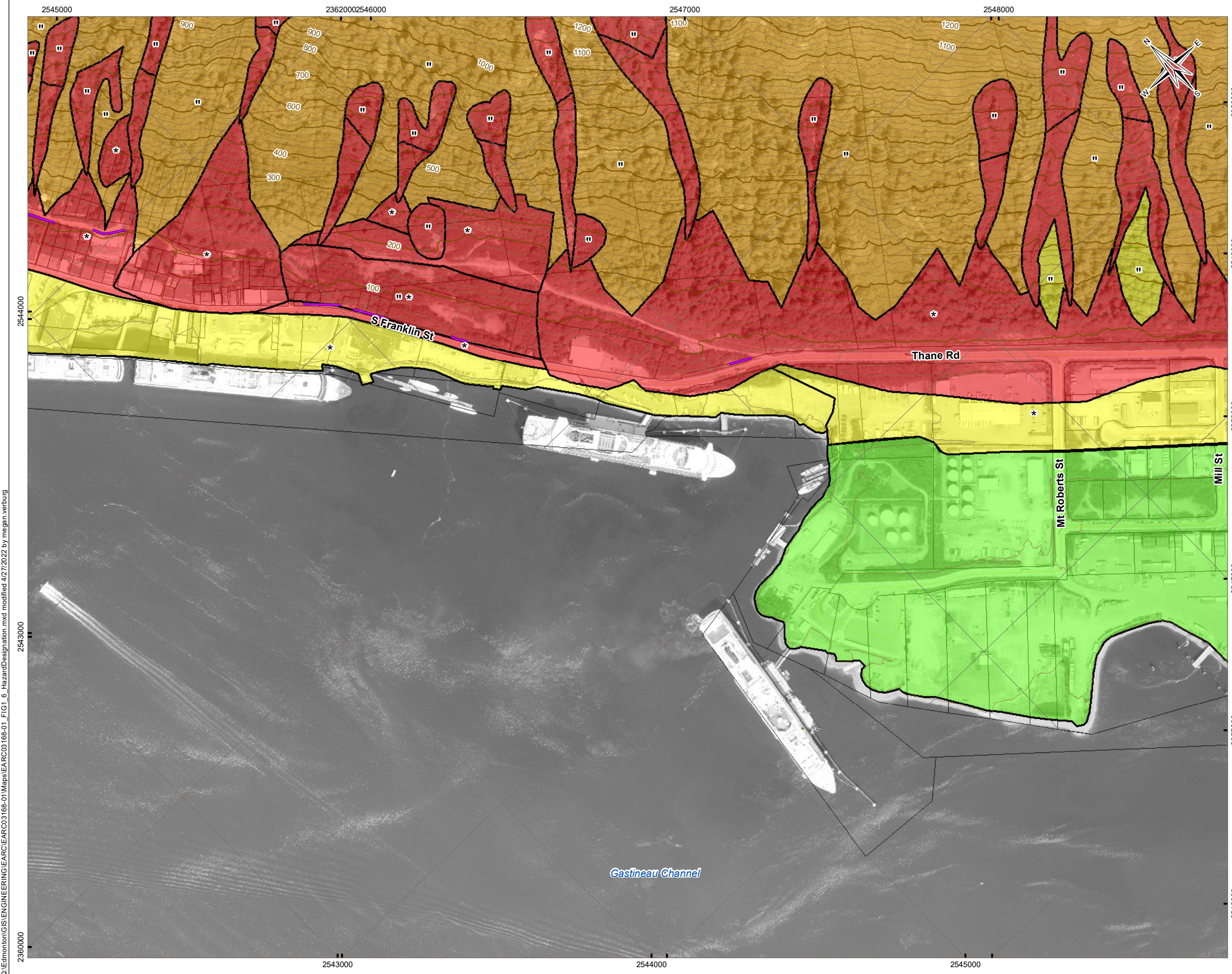
STATUS
ISSUED FOR USE

JUNEAU LANDSLIDE AND AVALANCHE ASSESSMENT

Landslide Hazard Designation Mapping

PROJECTION State Plane Alaska Zone 1 5001		DATUM NAD83		CLIENT CITY AND BOROUGH OF JUNEAU ALASKA CAPITAL CITY	
Scale: 1:5,000					
300 150 0 300 Feet					
FILE NO. EARC03168-01_FIG1_6_HazardDesignation.mxd					
OFFICE TL-EDM	DWN MRV	CKD SL	APVD SM/ VER	REV 0	Figure 1.6c
DATE April 27, 2022		PROJECT NO. ENG.EARC03168-01			

Q:\Edmonton\GIS\ENGINEERING\EARC03168-01\Maps\EA\RC03168-01_FIG1_6_HazardDesignation.mxd modified 4/27/2022 by megan.verburg



LEGEND

- Study Area
- Deep-Seated Bedrock Slide
- Engineered Slope¹

Landslide Hazard

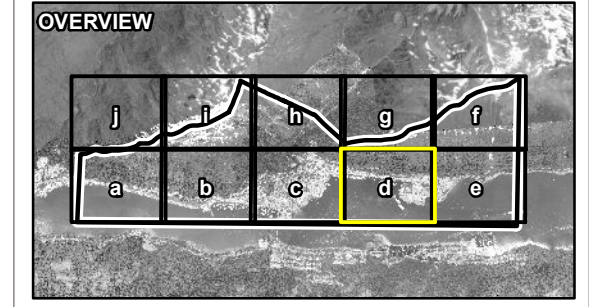
(For Hazard Designation Definitions Refer to Table 1.4 and the Glossary of Terms in the Report)

- Low
- Moderate
- High
- Severe
- Severe if Deep-Seated Bedrock Slide Fails

- " Initiation Zone
- * Runout Zone
- + Potential Initiation Zone for Deep-Seated Bedrock Slide

Base Data

- Index Contour (100 ft)
- Intermediate Contour (25 ft)
- Road
- Land Parcel



NOTES

¹ Engineered slope not evaluated by Tetra Tech for this study
 Base data source:
 Contours generated from 2013 LiDAR provided by CBJ.
 Additional contours generated from 2012 LiDAR provided by CBJ.
 Hydrology and roads obtained from Alaska Department of Natural Resources.
 Terrain Classification based on Terrain Classification System for British Columbia, Version 2, 1997.
 Primary imagery provided by CBJ, 2013.
 Background imagery provided by ESRI; Maxar (2020).

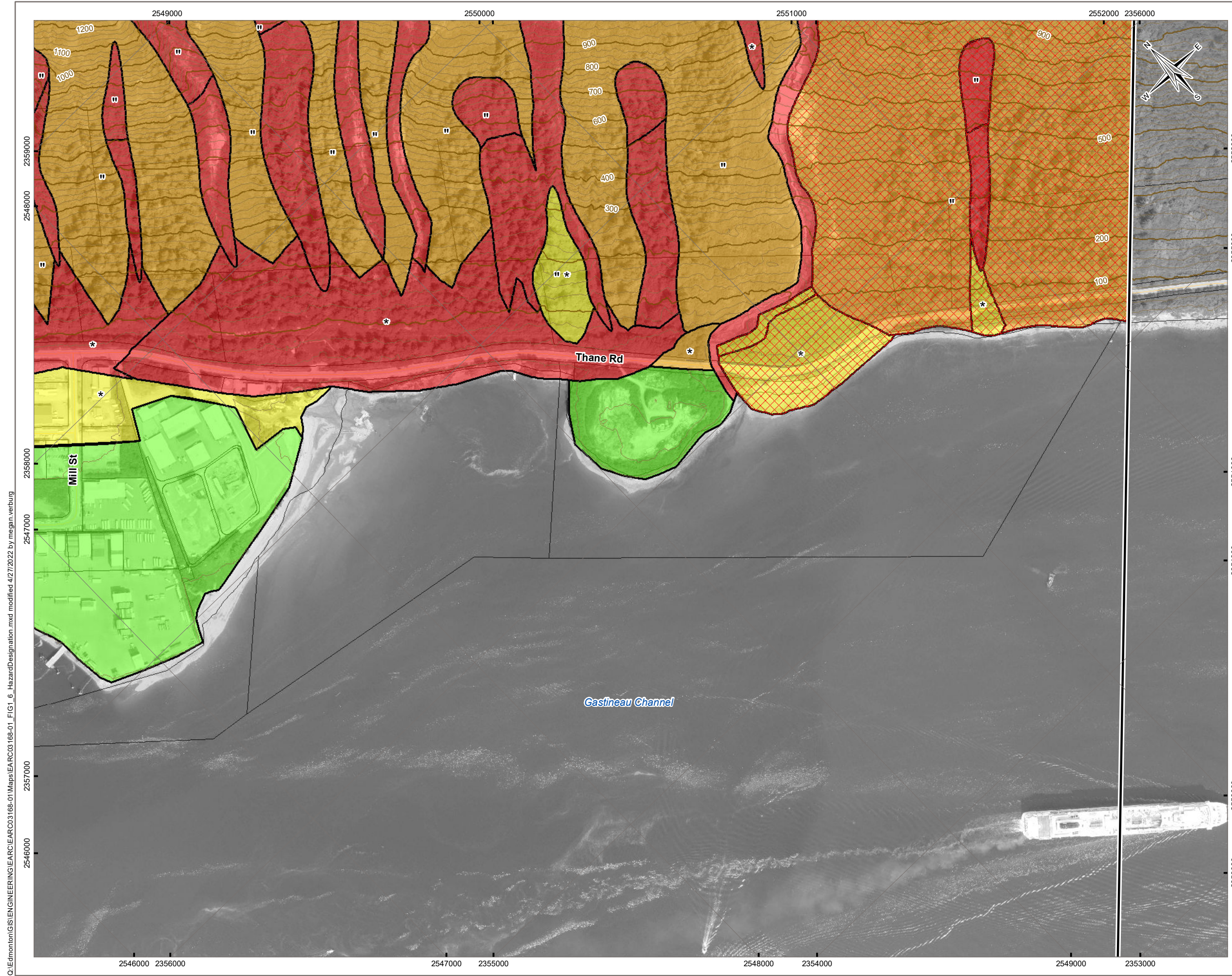
STATUS
ISSUED FOR USE

JUNEAU LANDSLIDE AND AVALANCHE ASSESSMENT

Landslide Hazard Designation Mapping

PROJECTION State Plane Alaska Zone 1 5001	DATUM NAD83	CLIENT CITY AND BOROUGH OF JUNEAU ALASKA CAPITAL CITY
Scale: 1:5,000 300 150 0 300 Feet		
FILE NO. EARC03168-01_FIG1_6_HazardDesignation.mxd		
OFFICE TL-EDM	DWN MRV	CKD SL
APVD SM/ VER	REV 0	
DATE April 27, 2022	PROJECT NO. ENG.EARC03168-01	
		Figure 1.6d

Q:\Edmonton\GIS\ENGINEERING\EARC\EARC03168-01\Maps\EARC03168-01_FIG1_6_HazardDesignation.mxd modified 4/27/2022 by megan.verburg



Q:\Edmonton\GIS\ENGINEERING\EARC03168-01\Maps\EARC03168-01_FIG1_6_HazardDesignation.mxd modified 4/27/2022 by megan.verburg

LEGEND

- Study Area
- Deep-Seated Bedrock Slide

Landslide Hazard
 (For Hazard Designation Definitions Refer to Table 1.4 and the Glossary of Terms in the Report)

- Low
- Moderate
- High
- Severe
- Severe if Deep-Seated Bedrock Slide Fails

- Initiation Zone
- Runout Zone
- Potential Initiation Zone for Deep-Seated Bedrock Slide

Base Data

- Index Contour (100 ft)
- Intermediate Contour (25 ft)
- Road
- Land Parcel

OVERVIEW

NOTES

¹ Engineered slope not evaluated by Tetra Tech for this study
 Base data source:
 Contours generated from 2013 LiDAR provided by CBJ.
 Additional contours generated from 2012 LiDAR provided by CBJ.
 Hydrology and roads obtained from Alaska Department of Natural Resources.
 Terrain Classification based on Terrain Classification System for British Columbia, Version 2, 1997.
 Primary imagery provided by CBJ, 2013.
 Background imagery provided by ESRI; Maxar (2020).

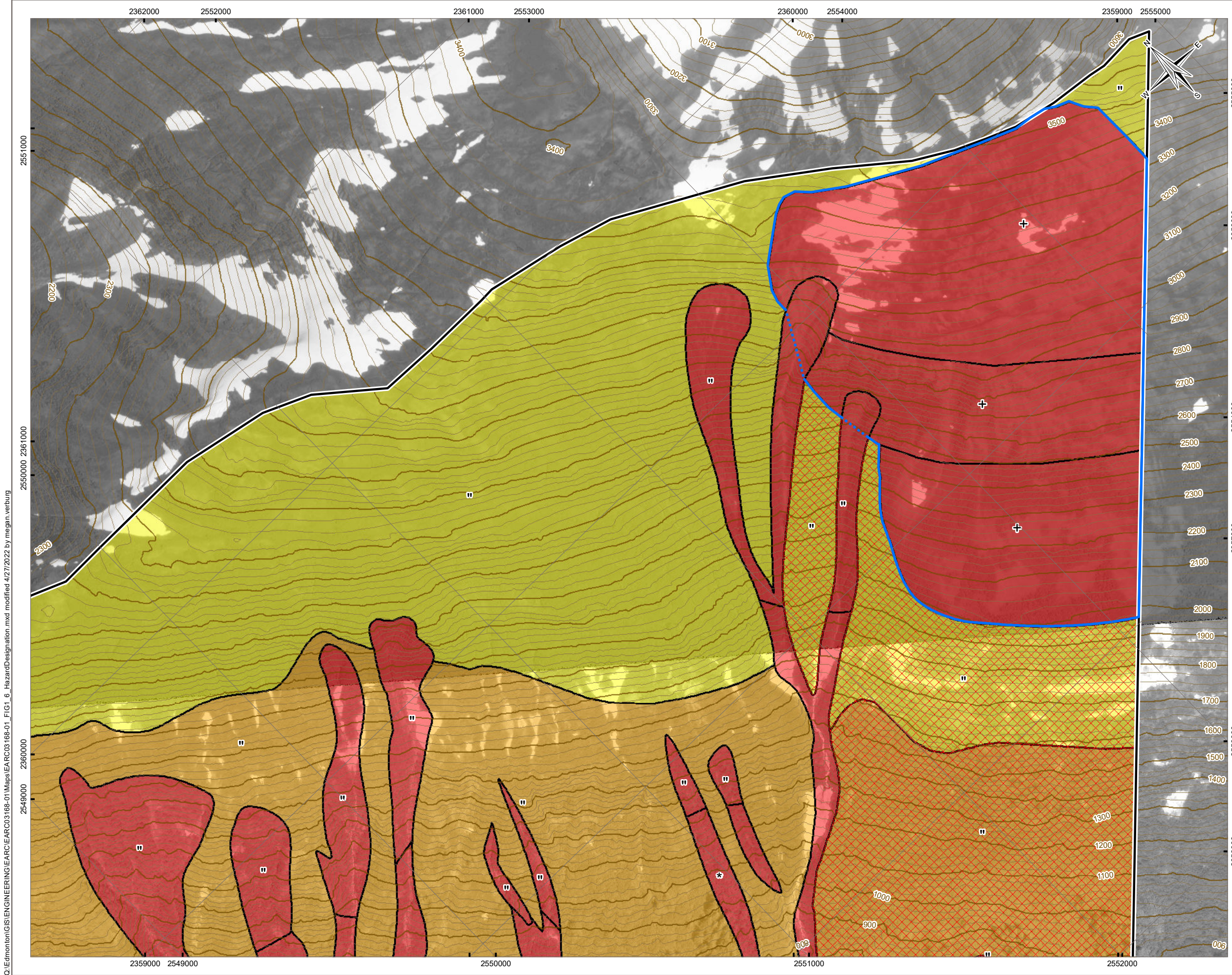
STATUS
ISSUED FOR USE

JUNEAU LANDSLIDE AND AVALANCHE ASSESSMENT

Landslide Hazard Designation Mapping

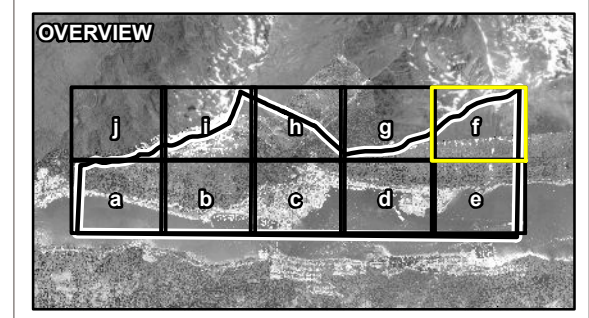
PROJECTION State Plane Alaska Zone 1 5001		DATUM NAD83		CLIENT JUNEAU <small>ALASKA CAPITAL CITY</small>		
Scale: 1:5,000 Feet						
FILE NO. EARC03168-01_FIG1_6_HazardDesignation.mxd		CLIENT 				
<table border="1" style="width: 100%; border-collapse: collapse; font-size: 0.7em;"> <tr> <td>OFFICE TL-EDM</td> <td>DWN MRV</td> <td>CKD SL</td> <td>APVD SM/ VER</td> <td>REV 0</td> </tr> </table>					OFFICE TL-EDM	DWN MRV
OFFICE TL-EDM	DWN MRV	CKD SL	APVD SM/ VER	REV 0		
DATE April 27, 2022		PROJECT NO. ENG.EARC03168-01				

Figure 1.6e



LEGEND

- Study Area
- Deep-Seated Bedrock Slide
- Landslide Hazard**
(For Hazard Designation Definitions Refer to Table 1.4 and the Glossary of Terms in the Report)
- Low
- Moderate
- High
- Severe
- Severe if Deep-Seated Bedrock Slide Fails
- Initiation Zone
- Runout Zone
- Potential Initiation Zone for Deep-Seated Bedrock Slide
- Base Data**
- Index Contour (100 ft)
- Intermediate Contour (25 ft)
- Land Parcel



NOTES

¹ Engineered slope not evaluated by Tetra Tech for this study
 Base data source:
 Contours generated from 2013 LiDAR provided by CBJ.
 Additional contours generated from 2012 LiDAR provided by CBJ.
 Hydrology and roads obtained from Alaska Department of Natural Resources.
 Terrain Classification based on Terrain Classification System for British Columbia, Version 2, 1997.
 Primary imagery provided by CBJ, 2013.
 Background imagery provided by ESRI; Maxar (2020).

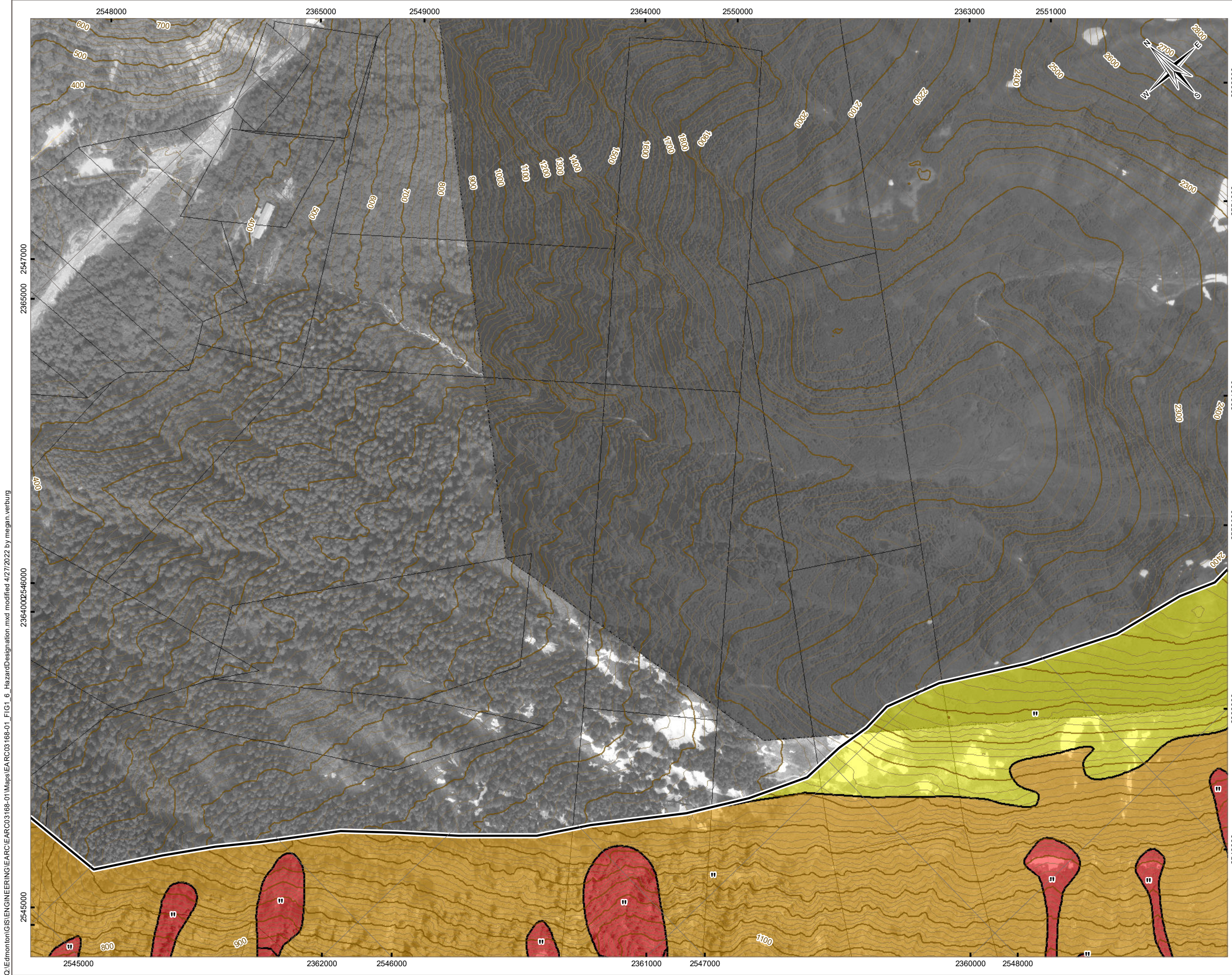
STATUS
ISSUED FOR USE

JUNEAU LANDSLIDE AND AVALANCHE ASSESSMENT

Landslide Hazard Designation Mapping

PROJECTION State Plane Alaska Zone 1 5001		DATUM NAD83		CLIENT CITY AND BOROUGH OF JUNEAU ALASKA CAPITAL CITY	
Scale: 1:5,000		TETRA TECH			
300 150 0 300 Feet					
FILE NO. EARC03168-01_FIG1_6_HazardDesignation.mxd					
OFFICE TL-EDM	DWN MRV	CKD SL	APVD SM/VER	REV 0	Figure 1.6f
DATE April 27, 2022	PROJECT NO. ENG.EARC03168-01				

Q:\Edmonton\GIS\ENGINEERING\EARC\EARC03168-01\Maps\EARC03168-01_FIG1_6_HazardDesignation.mxd modified 4/27/2022 by megan.verburg



LEGEND

- Study Area
- Deep-Seated Bedrock Slide

Landslide Hazard

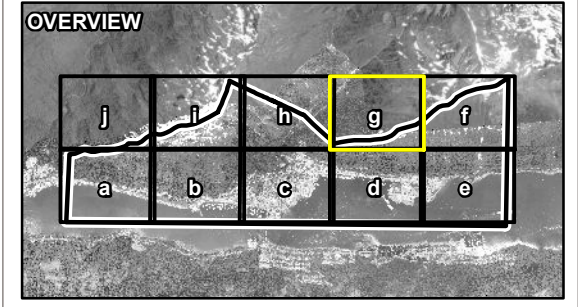
(For Hazard Designation Definitions Refer to Table 1.4 and the Glossary of Terms in the Report)

- Low
- Moderate
- High
- Severe
- Severe if Deep-Seated Bedrock Slide Fails

- ▣ Initiation Zone
- * Runout Zone
- + Potential Initiation Zone for Deep-Seated Bedrock Slide

Base Data

- Index Contour (100 ft)
- Intermediate Contour (25 ft)
- Road
- Land Parcel



NOTES

¹ Engineered slope not evaluated by Tetra Tech for this study
 Base data source:
 Contours generated from 2013 LiDAR provided by CBJ.
 Additional contours generated from 2012 LiDAR provided by CBJ.
 Hydrology and roads obtained from Alaska Department of Natural Resources.
 Terrain Classification based on Terrain Classification System for British Columbia, Version 2, 1997.
 Primary imagery provided by CBJ, 2013.
 Background imagery provided by ESRI; Maxar (2020).

STATUS
ISSUED FOR USE

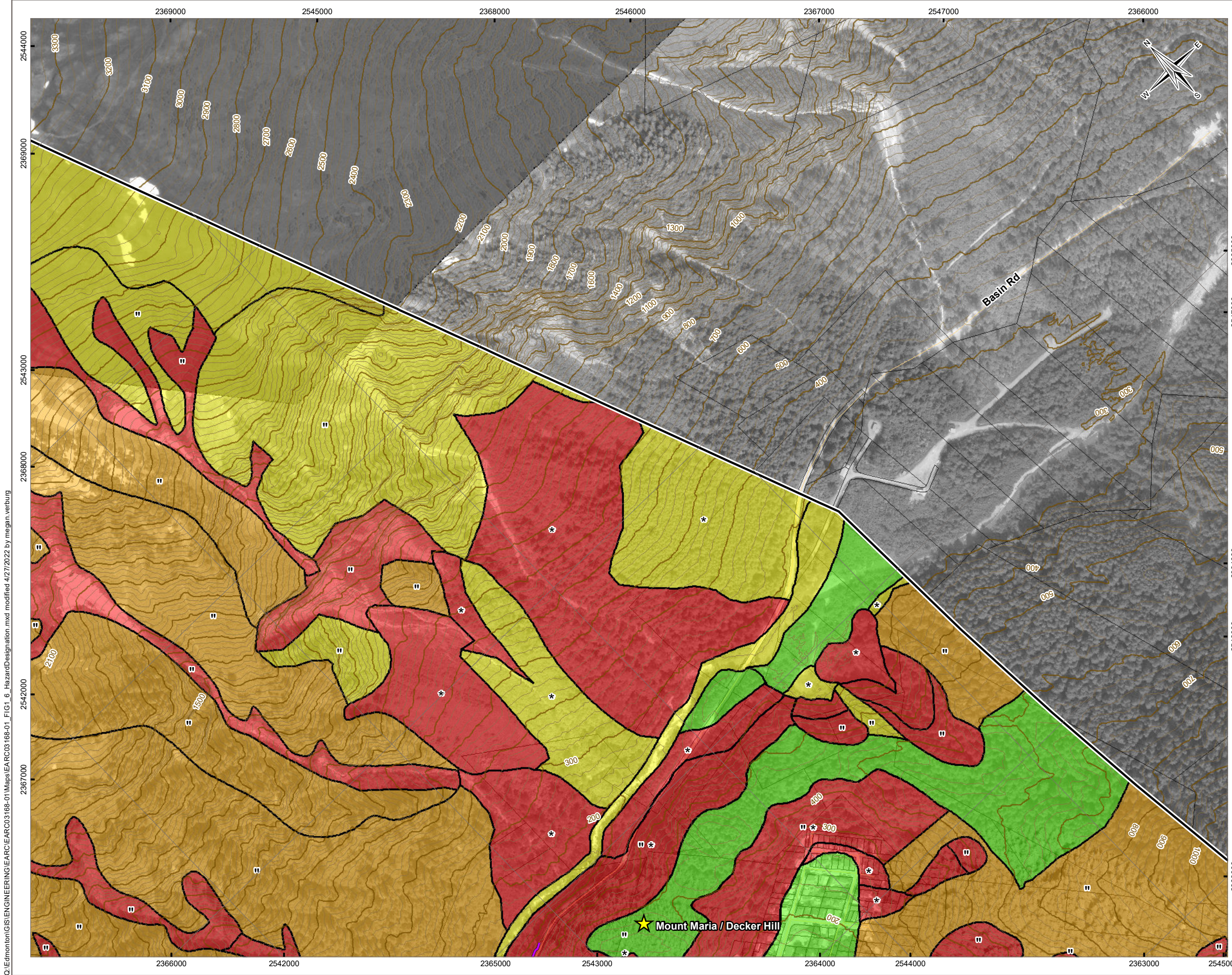
JUNEAU LANDSLIDE AND AVALANCHE ASSESSMENT

Landslide Hazard Designation Mapping

PROJECTION State Plane Alaska Zone 1 5001	DATUM NAD83	CLIENT CITY AND BOROUGH OF JUNEAU ALASKA CAPITAL CITY
Scale: 1:5,000 300 150 0 300 Feet		TETRA TECH
FILE NO. EARC03168-01_FIG1_6_HazardDesignation.mxd		
OFFICE TL-EDM	DWN MRV	CKD SL
APVD SM/ VER	REV 0	
DATE April 27, 2022	PROJECT NO. ENG.EARC03168-01	

Figure 1.6g

Q:\Edmonton\GIS\ENGINEERING\EARC\EARC03168-01\Maps\EARC03168-01_FIG1_6_HazardDesignation.mxd modified 4/27/2022 by megan.verburg



LEGEND

- ★ Location of Interest
- ▭ Study Area
- ▭ Deep-Seated Bedrock Slide
- Engineered Slope¹

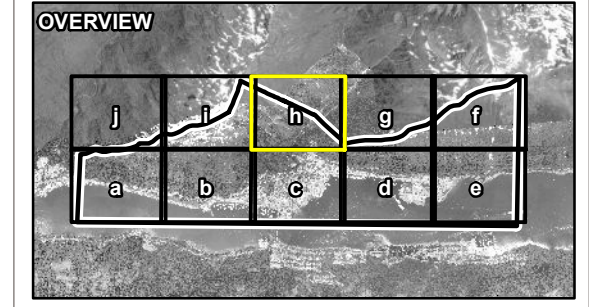
Landslide Hazard

(For Hazard Designation Definitions Refer to Table 1.4 and the Glossary of Terms in the Report)

- Low
- Moderate
- High
- Severe
- Severe if Deep-Seated Bedrock Slide Fails
- Initiation Zone
- Runout Zone
- Potential Initiation Zone for Deep-Seated Bedrock Slide

Base Data

- Index Contour (100 ft)
- Intermediate Contour (25 ft)
- Road
- Land Parcel



NOTES
¹ Engineered slope not evaluated by Tetra Tech for this study
 Base data source:
 Contours generated from 2013 LiDAR provided by CBJ.
 Additional contours generated from 2012 LiDAR provided by CBJ.
 Hydrology and roads obtained from Alaska Department of Natural Resources.
 Terrain Classification based on Terrain Classification System for British Columbia, Version 2, 1997.
 Primary imagery provided by CBJ, 2013.
 Background imagery provided by ESRI; Maxar (2020).

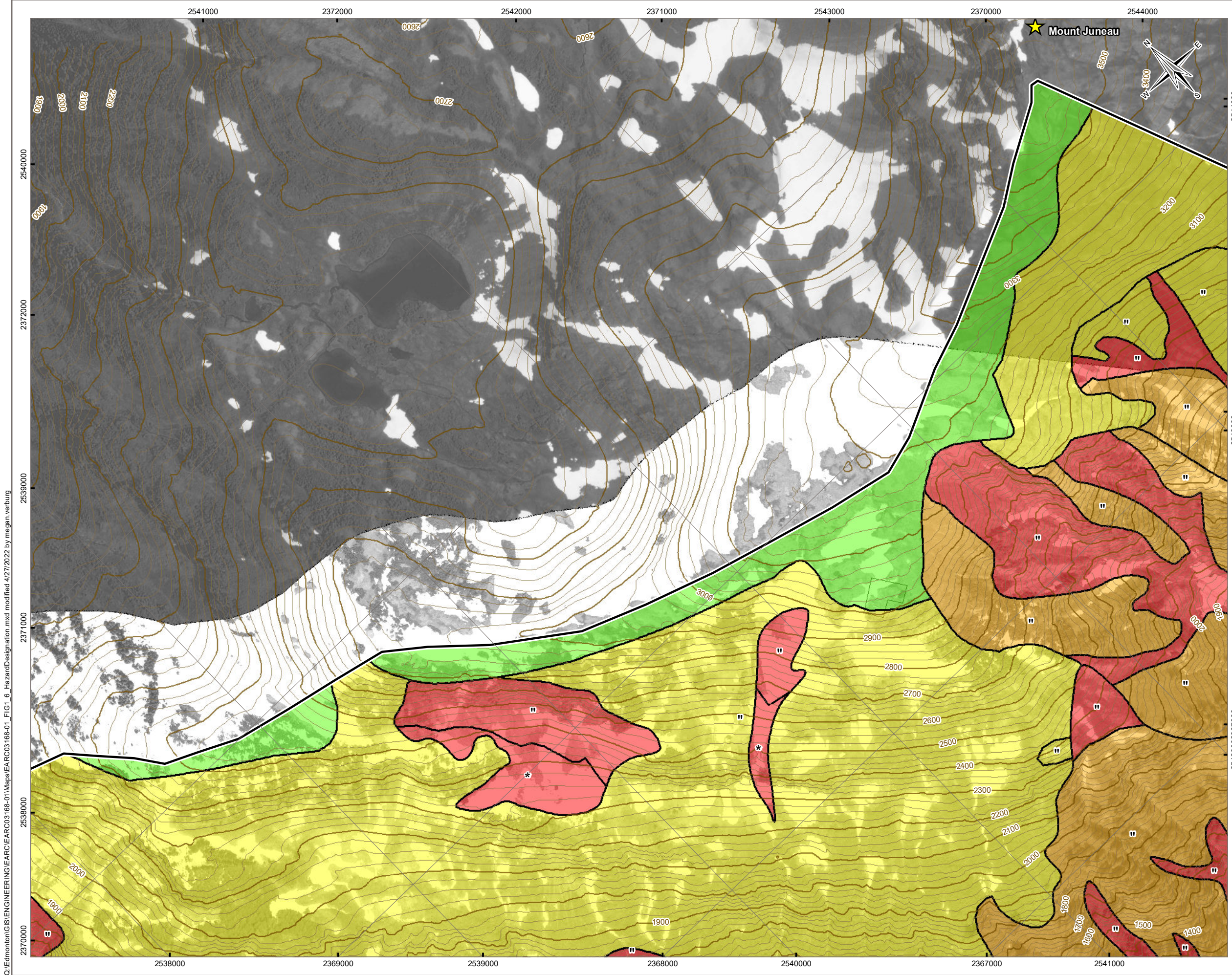
STATUS
ISSUED FOR USE

JUNEAU LANDSLIDE AND AVALANCHE ASSESSMENT

Landslide Hazard Designation Mapping

PROJECTION State Plane Alaska Zone 1 5001		DATUM NAD83		CLIENT CITY AND BOROUGH OF JUNEAU ALASKA CAPITAL CITY	
Scale: 1:5,000		300 150 0 300			
		Feet			
FILE NO. EARC03168-01_FIG1_6_HazardDesignation.mxd					
OFFICE TL-EDM	DWN MRV	CKD SL	APVD SM/VER	REV 0	Figure 1.6h
DATE April 27, 2022		PROJECT NO. ENG.EARC03168-01			

Q:\Edmonton\GIS\ENGINEERING\EARC\EARC03168-01\Maps\EA\FRC03168-01_FIG1_6_HazardDesignation.mxd modified 4/27/2022 by megan.verburg



LEGEND

- Location of Interest
- Study Area
- Deep-Seated Bedrock Slide

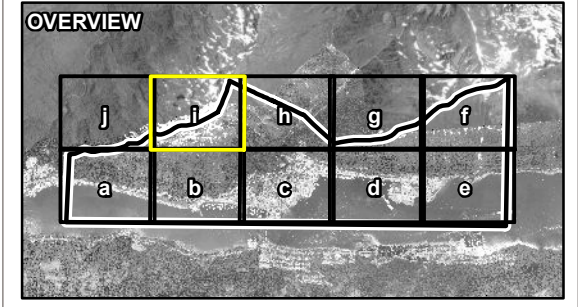
Landslide Hazard

(For Hazard Designation Definitions Refer to Table 1.4 and the Glossary of Terms in the Report)

- Low
- Moderate
- High
- Severe
- Severe if Deep-Seated Bedrock Slide Fails
- Initiation Zone
- Runout Zone
- Potential Initiation Zone for Deep-Seated Bedrock Slide

Base Data

- Index Contour (100 ft)
- Intermediate Contour (25 ft)
- Land Parcel



NOTES

¹ Engineered slope not evaluated by Tetra Tech for this study
 Base data source:
 Contours generated from 2013 LiDAR provided by CBJ.
 Additional contours generated from 2012 LiDAR provided by CBJ.
 Hydrology and roads obtained from Alaska Department of Natural Resources.
 Terrain Classification based on Terrain Classification System for British Columbia, Version 2, 1997.
 Primary imagery provided by CBJ, 2013.
 Background imagery provided by ESRI; Maxar (2020).

STATUS
ISSUED FOR USE

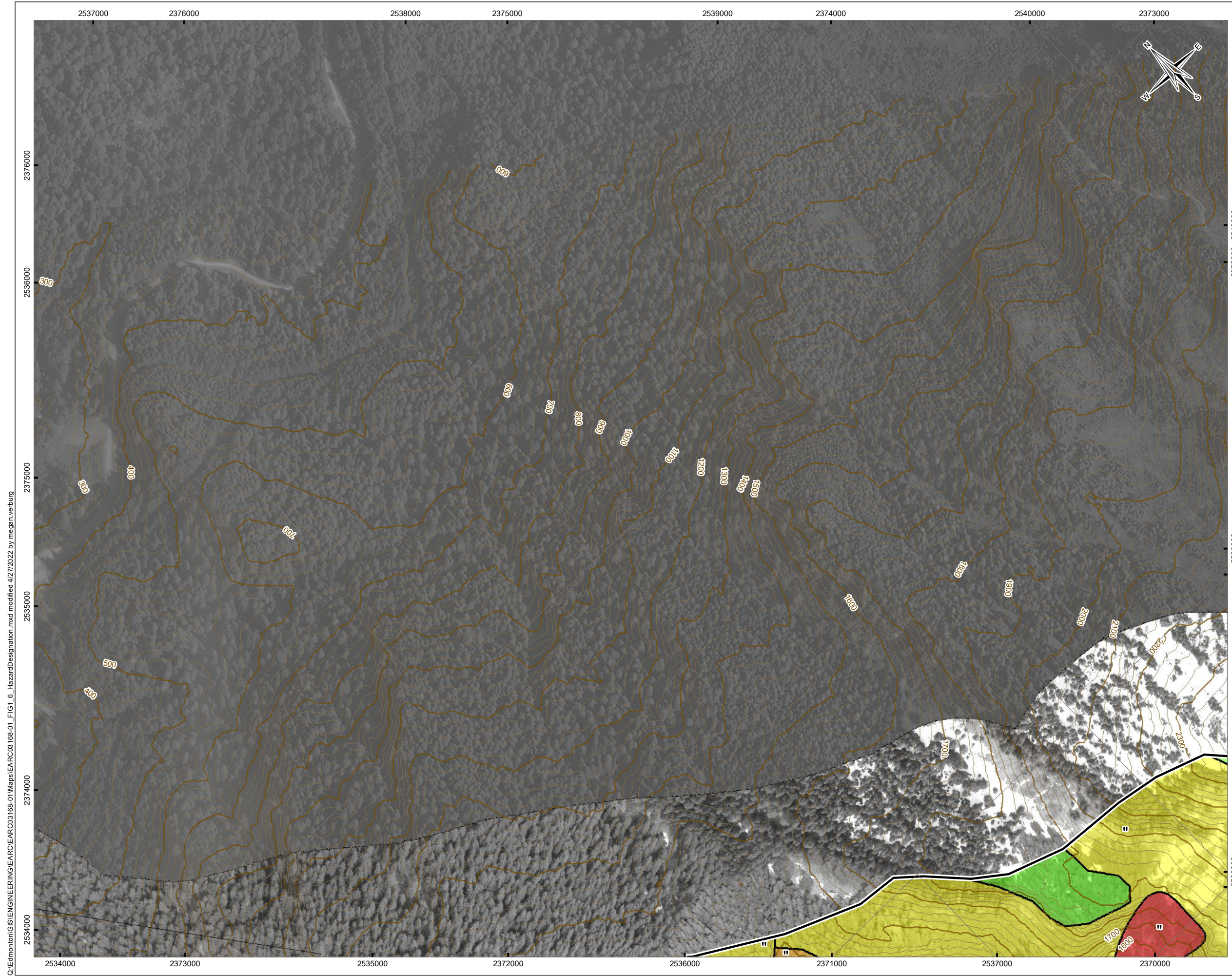
JUNEAU LANDSLIDE AND AVALANCHE ASSESSMENT

Landslide Hazard Designation Mapping

PROJECTION State Plane Alaska Zone 1 5001	DATUM NAD83	CLIENT
Scale: 1:5,000 		
FILE NO. EARC03168-01_FIG1_6_HazardDesignation.mxd		
OFFICE TL-EDM	DWN MRV	CKD SL
APVD SM/VER	REV 0	
DATE April 27, 2022	PROJECT NO. ENG.EARC03168-01	

Figure 1.6i

Q:\Edmonton\GIS\ENGINEERING\EARC03168-01\Maps\EARC03168-01_FIG1_6_HazardDesignation.mxd modified 4/27/2022 by megan.verburg



LEGEND

- Study Area
- Deep-Seated Bedrock Slide

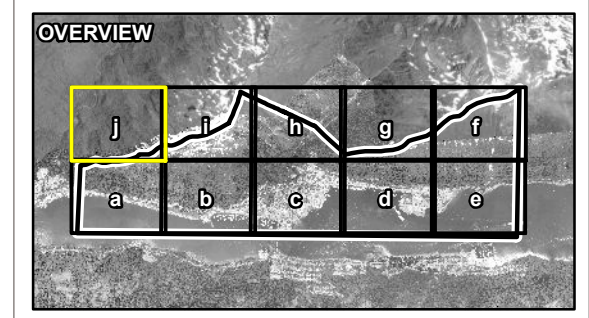
Landslide Hazard
 (For Hazard Designation Definitions Refer to Table 1.4 and the Glossary of Terms in the Report)

- Low
- Moderate
- High
- Severe
- Severe if Deep-Seated Bedrock Slide Fails

- Initiation Zone
- Runout Zone
- Potential Initiation Zone for Deep-Seated Bedrock Slide

Base Data

- Index Contour (100 ft)
- Intermediate Contour (25 ft)
- Land Parcel



NOTES

¹ Engineered slope not evaluated by Tetra Tech for this study

Base data source:
 Contours generated from 2013 LiDAR provided by CBJ.
 Additional contours generated from 2012 LiDAR provided by CBJ.
 Hydrology and roads obtained from Alaska Department of Natural Resources.
 Terrain Classification based on Terrain Classification System for British Columbia, Version 2, 1997.
 Primary imagery provided by CBJ, 2013.
 Background imagery provided by ESRI; Maxar (2020).

STATUS
ISSUED FOR USE

**JUNEAU LANDSLIDE AND
 AVALANCHE ASSESSMENT**

Landslide Hazard Designation Mapping

PROJECTION State Plane Alaska Zone 1 5001		DATUM NAD83		CLIENT CITY AND BOROUGH OF JUNEAU ALASKA CAPITAL CITY	
Scale: 1:5,000					
300 150 0 300 Feet					
FILE NO. EARC03168-01_FIG1_6_HazardDesignation.mxd					
OFFICE TL-EDM	DWN MRV	CKD SL	APVD SM/ VER	REV 0	Tetra Tech
DATE April 27, 2022	PROJECT NO. ENG.EARC03168-01				

Figure 1.6j

Q:\Edmonton\GIS\ENGINEERING\EARC\EARC03168-01\Maps\EARC03168-01_FIG1_6_HazardDesignation.mxd modified 4/27/2022 by megan.verburg