



City and Borough of Juneau  
 City & Borough Manager's Office  
 155 South Seward Street  
 Juneau, Alaska 99801  
 Telephone: 586-5240 | Facsimile: 586-5385

DATE: January 3, 2022  
 TO: CBJ Assembly  
 FROM: Robert Barr, Incident Commander  
 RE: **Situational Update –Level 3 Modified High**

Overall Community Risk	Disease Situation	Hospital Capacity	Public Health Capacity	<b>The Complete CBJ COVID-19 Dashboard can be found <a href="#">here</a> or by going to <a href="#">Juneau.org/ COVID-19</a></b>
<b>Level 3 - Modified High</b>	The community case load remains high and, recently, has been stable. The Delta variant is present and community spread is occurring. Vaccine is available.	Local hospital case loads are stable, staffing is constrained due to staff isolation/quarantine. Staffing levels remain additionally dependent on a state contract. Medevac capacity is stable.	Most positive individuals are being reached within 24 hours. Approximately half of recent case activity is secondary in nature.	

**Situation Assessment:**

The 14 and 7 day case rates are at the very high alert level. The Omicron variant appears to be the dominant strain, although lab confirmation is pending. The community is urged to take advantage of vaccination, masking, and testing - the three most effective tools we have at combating the pandemic. Masking is required when indoors in public places. Social distancing remains recommended to mitigate disease spread and allow for effective contact tracing. Individuals should test immediately if they have even mild symptoms. **The single most effective strategy to mitigate COVID is to get vaccinated.**

**Issues of Note:**

Case activity is spiking upwards locally, averaging approximately 38 new cases a day over the long weekend, setting unfortunately a new 7-day case rate record. Our test positivity is also as high as it's been (13%); however, it is important to note that test positivity only takes into account PCR based testing. We know there is quite a bit of rapid antigen testing occurring in the community. Those tests are not captured, nor are positive individuals associated with them captured in the case data unless that individual seeks a confirmatory PCR test.

While the above metrics are high, hospitalizations – so far and thankfully – are not following the trends of prior waves. This is consistent with omicron-based spread that we are seeing elsewhere throughout the world. Reduced hospitalization rates are likely due to two factors, 1) relatively high levels of population-based immunity, either due to vaccination- or infection-based immunity, and 2) omicron likely being less

severe than prior variants by some element of its nature. We have less certainty around #2 than #1; however, the science is evolving in that direction.

The EOC remains concerned about our sharp uptick in case activity for two primary reasons:

- Even with a lower rate of hospitalization, a lower percentage of a much larger number of cases has the potential to burden the healthcare system. Nationwide, hospitalizations are currently near Delta's peak, and
- With current quarantine and isolation requirements, staffing is becoming constrained both inside and outside of the hospital. BRH reports 12 people out on quarantine or isolation today, the highest number to date. Likewise, reports of other critical infrastructure public and private sector staff out on Q&I are abundant.

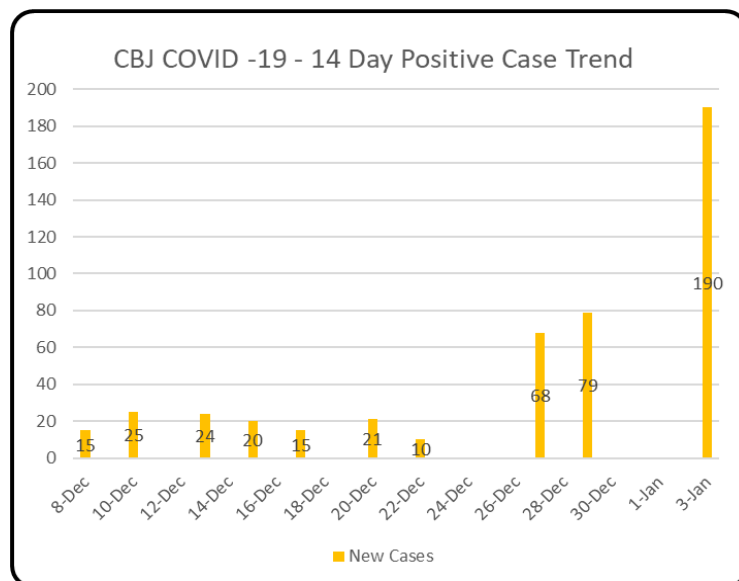
For both of these reasons, the EOC elevated the community risk level to modified-high today. The only community mitigation strategy that changes under modified high is that masking becomes required in indoor public spaces, regardless of vaccination status. The objective of this change is to curb spread such that businesses, governmental services, and the hospital remain operational during this current wave. The EOC urges individuals to choose effective multi-layer or surgical/N95/KN95 masks that fit well during this period.

#### General Case Trends:

Juneau Public Health was not able to report generalized case trends today due to staffing limitations.

**Daily Numbers update:** We are reporting 269 new cases since the last EOC report on December 27<sup>th</sup> (M-M).

Statewide, the Alaska Department of Health and Social Services reports [2,872](#) new people identified with COVID-19 for data reported 12/29-1/2. The state reports 1 new death. The total number of resident deaths is 947. Alaska has had 154,369 cumulative resident cases of COVID-19 and a total of 5,720 nonresidents.



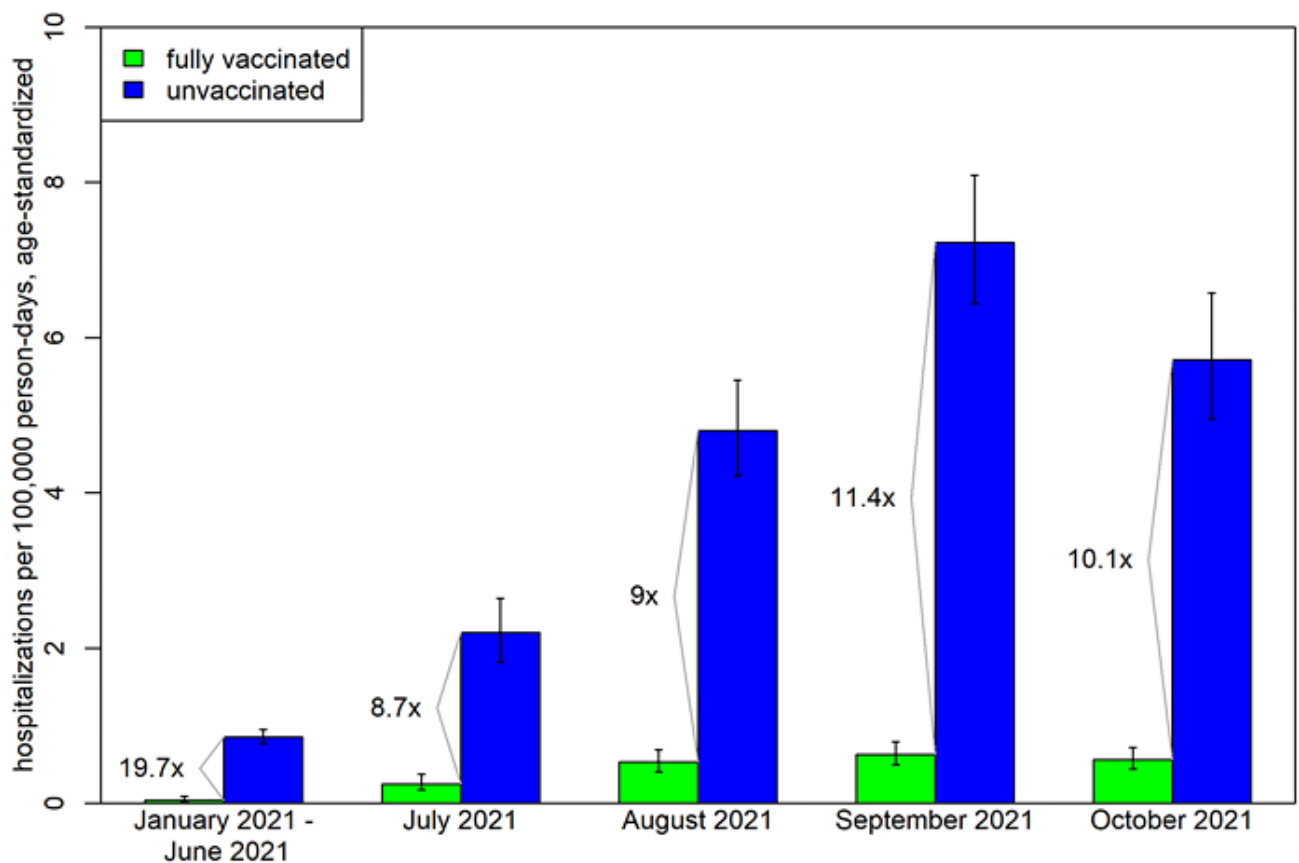
**Breakthrough Cases:** Vaccine breakthrough (VB) infections of COVID are those detected in a person who is at least 2 weeks beyond their second dose of a 2-dose series or the only dose of a 1-dose series.

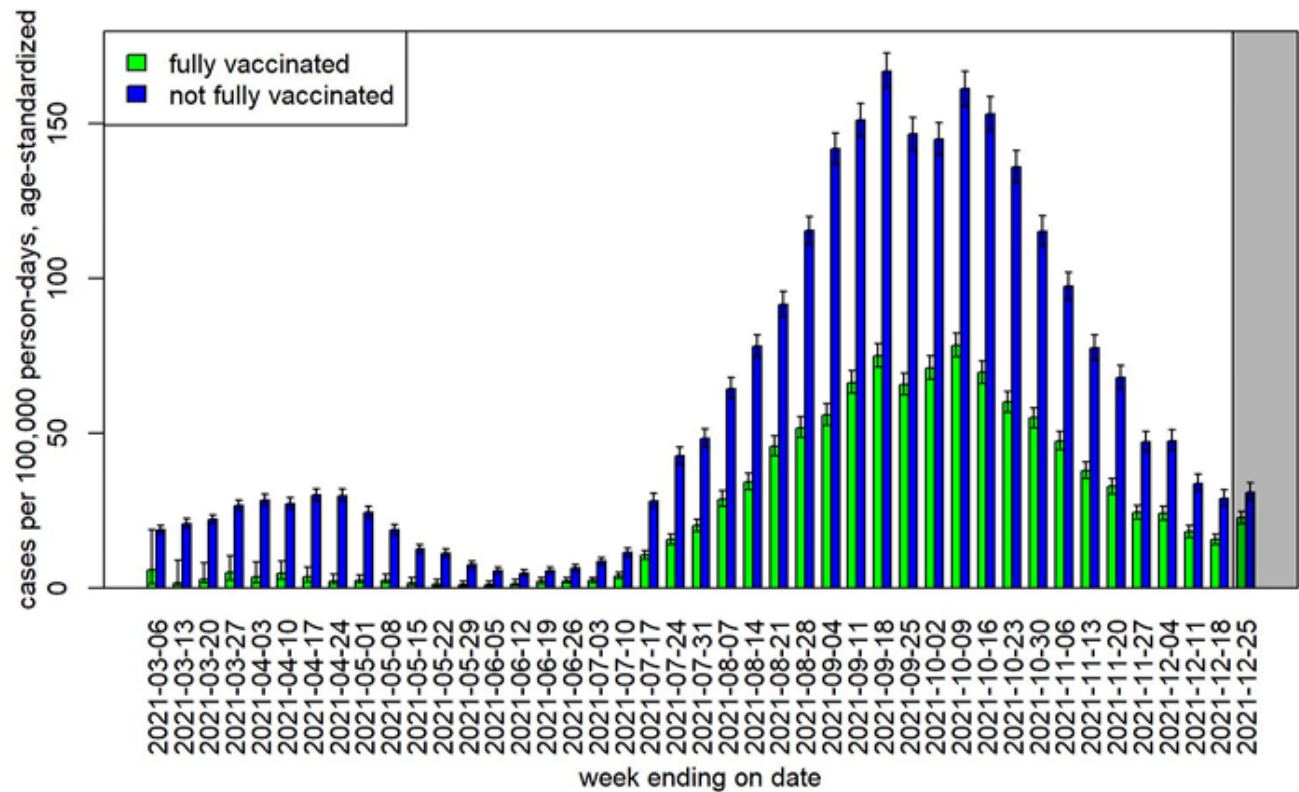
From January 16–December 25, 2021, 112 deaths, 344 hospitalizations, and 25,954 cases with a VB infection were reported among Alaska residents aged  $\geq 5$  years. These counts are provisional and subject to change as data are compiled and reviewed. In that same time frame, a total of 94,696 cases, 2,037 hospitalizations, and 634 deaths were reported.

73% of all cases, 83% of all hospitalizations, and 82% of deaths among Alaska residents aged  $\geq 5$  years from January 16–December 25, 2021 were in people who were not fully vaccinated.

Between December 19 and December 25, Juneau had a vaccine breakthrough rate of 42.5% (down from 58% in the prior week).

More detailed information about hospitalizations, deaths, repeat and vaccine breakthrough infections among Alaska residents can also be found in the DHSS [monthly report](#), which includes data through October.



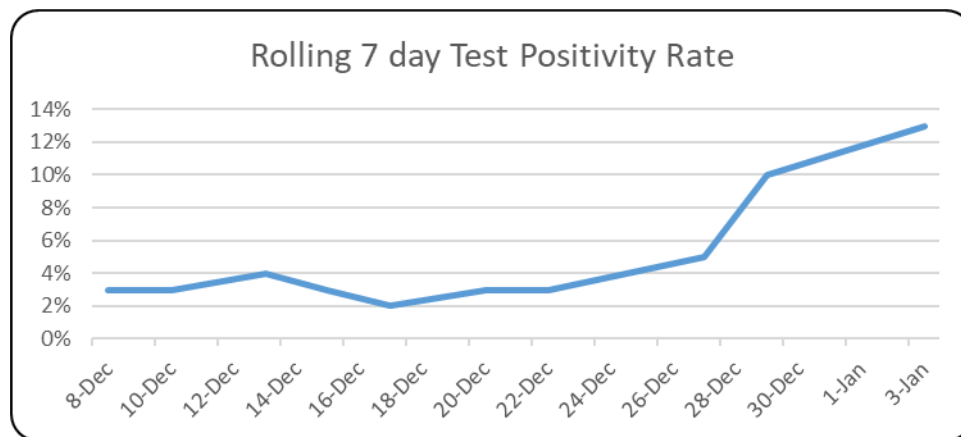


**Variants of Concern:**

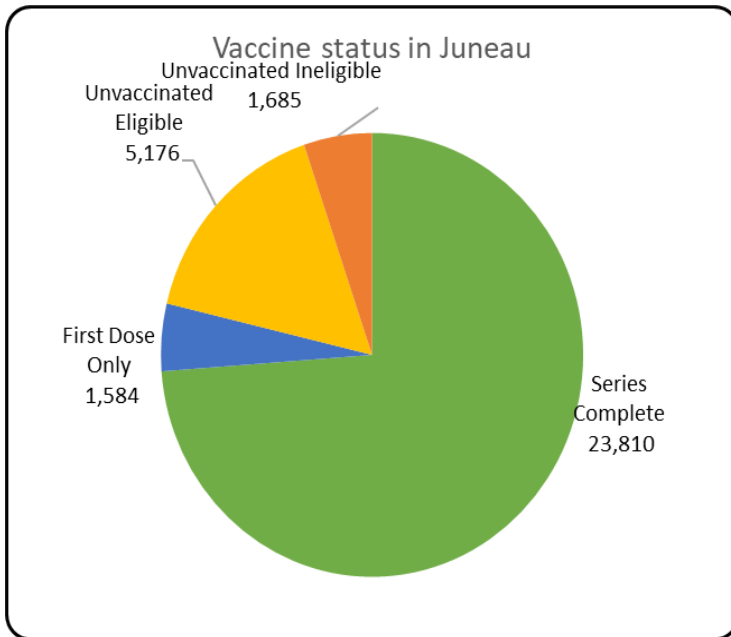
The Delta variant continues to be the dominant SARS-CoV-2 variant in Alaska. Information on the Omicron variant is sparse at the moment; seven cases have been identified in Alaska to date; however, based on recent case activity trends, Omicron is almost certainly spreading throughout the state. The State of Alaska variants dashboard is available online: <https://akvariants.github.io/>

**Testing Summary:**

PCR testing at BRH continues to return results in under 24 hours, with very few exceptions.



**Vaccination Updates:**



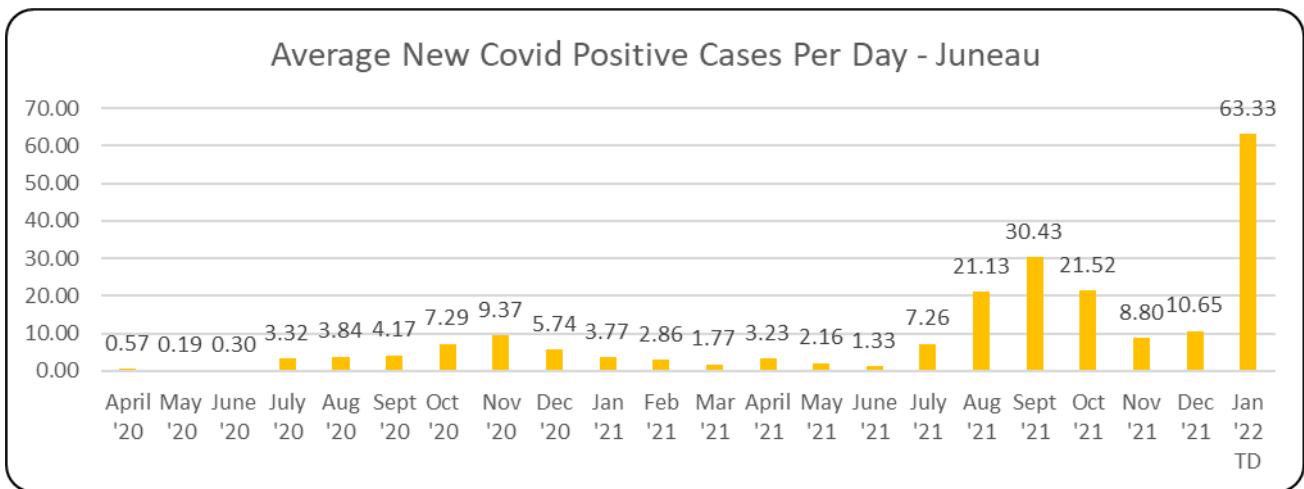
Total: **78.7%** of the total population of Juneau has received at least 1 dose of vaccine and **73.8%** have completed their vaccine series.

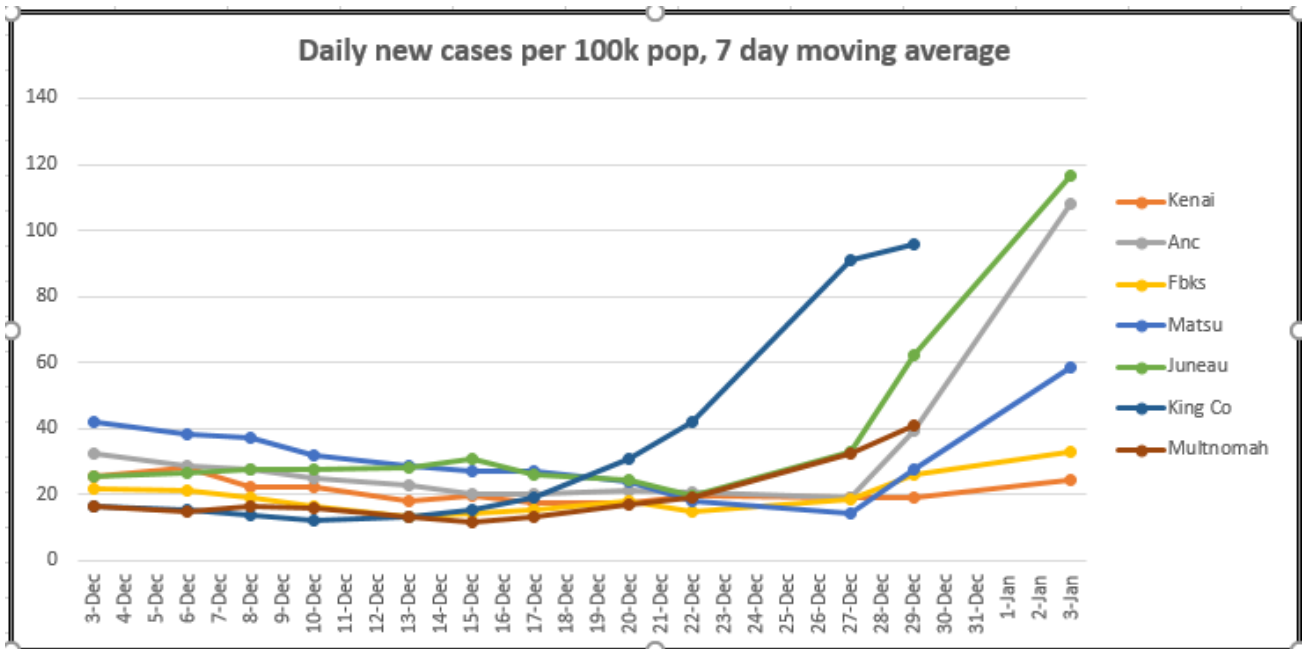
5+: **83.1%** of the age eligible Juneau population has received at least 1 dose of vaccine. **77.9%** have completed their vaccine series.

**35.8%** of those 5+ have received a booster dose.

65+: **96%** of this age group has at least one dose of vaccine. **92%** have completed the vaccine series.

**70.5%** of those 65+ have received a booster dose.





This chart tracks the number of new cases in the past 7 days, controlled for population. King County (Seattle) and Multnomah County (Portland) are included for context and due to travel frequency. The source data for Alaska is from the SOA dashboard. Out of state data is from the Harvard Global Health Institute (<https://globalepidemics.org/key-metrics-for-covid-suppression/>) and generally lags a day behind most of our other reporting. Policy recommendations at varying levels (<1, <10, <25, 25+) can be found on their website