



Docks & Harbors The Tide Line July 2021



Docks & Harbors Meetings

*Currently all meetings
will be conducted via
Zoom meetings*

Operations/Planning
Wednesday July 21st
At 5:00 pm

Regular Board
Thursday July 29th
At 5:00 pm

Meetings
agendas and minutes
can be found at:
<https://bit.ly/3aRyTAD>

Port Directors Corner: Docks & Harbor looks forward to serving the Juneau community and our visitors to the Capital City. The Docks Enterprise, with a seasonal staff of 9, is gearing up to support the arrival of Royal Caribbean's SERENADE OF THE SEAS on Friday, July 23rd. This will be the first of approximately 75 large cruise ship visits to Juneau this year, which does not include the smaller vessels such as the National Geographic brands or UnCruise who have been operating since May. Pre-COVID, the Port of Juneau would have welcomed nearly 557 large vessels calling on the four docks and lightering from anchorage. The large cruise ship season will end on October 20th with the NORWEGIAN ENCORE departure.

TBMP
Tourism Best Management Practices
working together for Juneau's future

How ARE WE DOING?
Should you have concerns or questions about tourism operations during the summer, please comment using our TBMP hotline.

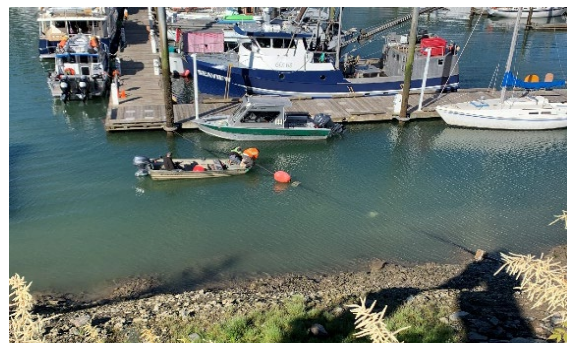
After May 1, email hotline@traveljuneau.com or call 586-6774.

Please note that Docks & Harbors is a strong supporter of TBMP principals (www.tbmp.info) and advocates for voluntarily compliance to mitigate community impact from tourism activity. We encourage use of the hotline number (586-6774) or email (hotline@traveljuneau.org) to report tourism operational concerns.

Downtown Docks & Harbors Parking Lots: With the limited cruise ship season, we will be managing the parking lots in a hybrid manner this summer. Our goal is to continue to balance the needs of the transportation companies with the desire to provide privately owned vehicular parking. The large coaches need to be provided with sufficient space to transit through our major lots on most days. A single privately owned vehicle left unattended has the potential to close the entire lot. It is our intentions to manage the Taku Lot (nearest Twist Fish) using parking meters to ensure there is turnover of vehicles which provides parking for more users. We will provide reasonable access to the other lots as much as practicable.

Harris Harbor Zinc Anodes: Global Diving & Salvage has been given notice to proceed with the installation of zinc anodes in Harris Harbor. Their intentions are to mobilize in mid-August and will complete the work within a week. This \$180K project was 50% funded under the ADOT Harbor Facility Grant project.

Harris Harbor Pump Out: Docks & Harbors is in the final stages to complete the rebuild of the Harris Harbor pump out which will be usable year-round. The photo shows our contractor, ENCO, working with the sewer line after excavating along the bank to bury the line into the existing sewage lift station. Harbor staff and contracted electricians will work to install the pump in the coming days. This \$50K project was 75% funded with funds from the ADF&G Sport Fish Grant program.



New Employee: Drew Baird has joined the Docks & Harbors team as an Administrative Assistant III where he will supervise two year-round and two seasonal employees. Drew comes to us via Eaglecrest where he was the Base Operations Supervisor. Please stop by the Aurora Harbor Office and introduce yourself to him.

Farewell: Mary Wolf (Administrative Assistant I) has departed the Port Office where she has worked faithfully for the past 3 years. We are very pleased that she will be moving on to manage the CBJ Fieldhouse. We wish Mary the very best in her new adventure.

Welcome aboard new Board Members: On June 23rd, the Assembly announced the appointments of two new and one incumbent Docks & Harbors Board members to serve the Juneau public. Paul Grant and Matt Leither are new selections to the Board and Jim Becker will be returning. The Board consists of nine dedicated public volunteers who serve for 3-year terms. Docks & Harbors is especially thankful to James Houck and Chris Dimond for their diligent service as Board Members.

July 4th Downtown: Docks & Harbors will have the floating cruise ship berths open for the fireworks again this year. Additionally, the newly constructed Archipelago deckover should provide excellent viewing opportunities. We ask that everyone exercise caution and refrain from lighting concussive fireworks or fireworks which can reasonably damage the decking.

Help stop theft in our Harbors! If you see something, say something. Call suspicious activity to JPD Non-Emergency Line at 907-586-0600 and report to the Harbor Office at 907-586-5255.

Launch Ramp Permits: As a reminder, users of launch ramps must display a permit decal (or a purchase receipt) to be compliant with CBJ ordinance. The fine for failing to have a launch ramp permit is \$75. The permits are available at the harbor offices or on-line at www.juneauharbors.com. The annual permit is \$90 with the daily permit of \$15.

D & H encourages electronic statements to make online bill pay at juneauharbors.com faster and easier, and also save money on mailings! Please send an email to harbormaster@juneau.org to request electronic statements.

Docks & Harbors
Office Hours:
Port Office
907-586-0292
Monday - Friday
8:00am - 4:30pm
Port/Field Office
907-586-5720
Monday - Friday
8:00am - 4:30pm
Aurora Harbor
907-586-5255
Monday - Friday
8:00am - 4:30pm
Statter Harbor
907-789-0819
Monday - Saturday
8:00am - 4:30pm
All Offices
Closed 12-1 for lunch

Federal Grants Application: Docks & Harbors is working with our consultants to apply for three federal US DOT grants: (1) Cruise Dock Electrification; (2) Juneau Fisheries Terminal Expansion; and (3) Small Cruise Ship Infrastructure Master Plan. We are cautiously optimistic that at least one of our projects will be selected in a highly competitive process. Docks & Harbors appreciates the support of the Juneau Commission on Sustainability (JCOS) for their efforts in assisting in our application process.

Gill Net Recycling: Community members can dispose of gillnets for free through the City & Borough of Juneau RecycleWorks. CBJ will take properly prepared gillnets and send them to a recycler in Seattle. Contact RecycleWorks Operations Manager Stuart Ashton to arrange a drop off at Stuart.Ashton@juneau.org or (907) 586-5225. Preparing a gillnet for recycling involves removing all non-web material including: hanging twine, float line, corks, lead line, and weed line. The cleaned web is the only part of the gillnet that is recyclable. Learn how to properly prepare your gillnet for recycling by watching [this video](#) or contacting Nicole Baker with Net Your Problem at (907) 359-3450 or netyourproblem@gmail.com.