

**NOTE:**  
BOAT TRAILER SPACE SIZES ARE PROVIDED FOR REFERENCE PURPOSES ONLY, SEE STRIPING & SIGNAGE PLAN FOR TRUE DIMENSION

- SILT CONTAINMENT BOOM**
- NOTES:
1. GENERAL REQUIREMENTS SHOWN, SEE SPECIFICATIONS. FINAL DESIGN BY CONTRACTOR.
  2. PLACE AND SECURE BOOM APPROXIMATELY 10' SEAWARD OF TOE OF ALL SLOPES. MONITOR AND MAINTAIN POSITION AND INTEGRITY DURING ALL FILL PLACEMENT OPERATIONS.
  3. REMOVE AND DISPOSE BOOM UPON COMPLETION OF ALL FILL PLACEMENT.

**IMPROVEMENTS SITE PLAN**

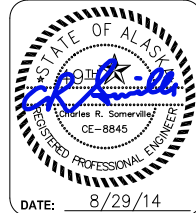


REVISIONS					
REV.	DATE	DESCRIPTION	DWN.	CKD.	APP.

**PND ENGINEERS, INC.**

9360 Glacier Highway, Ste. 100  
Juneau, Alaska 99801  
Phone: 907-586-2093  
Fax: 907-586-2099  
www.pndengineers.com

DESIGN: ICB CHECKED: CRS SCALE: SCALE IN FEET  
DRAWN: ICB APPROVED: CRS 0 40 80 FT



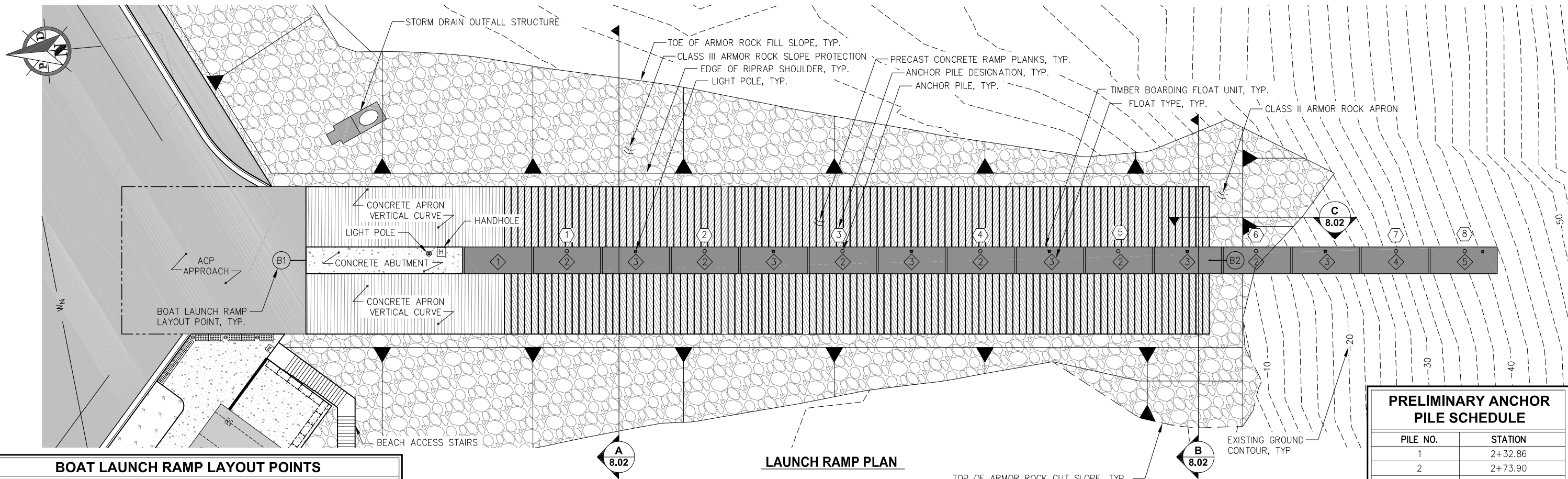
**CITY & BOROUGH OF JUNEAU, ALASKA**  
**STATTER HARBOR IMPROVEMENTS**  
CONTRACT NO. DH14-014

SHEET TITLE: **GENERAL IMPROVEMENTS OVERVIEW**

PND PROJECT NO.: 082015

DATE: 8/29/14

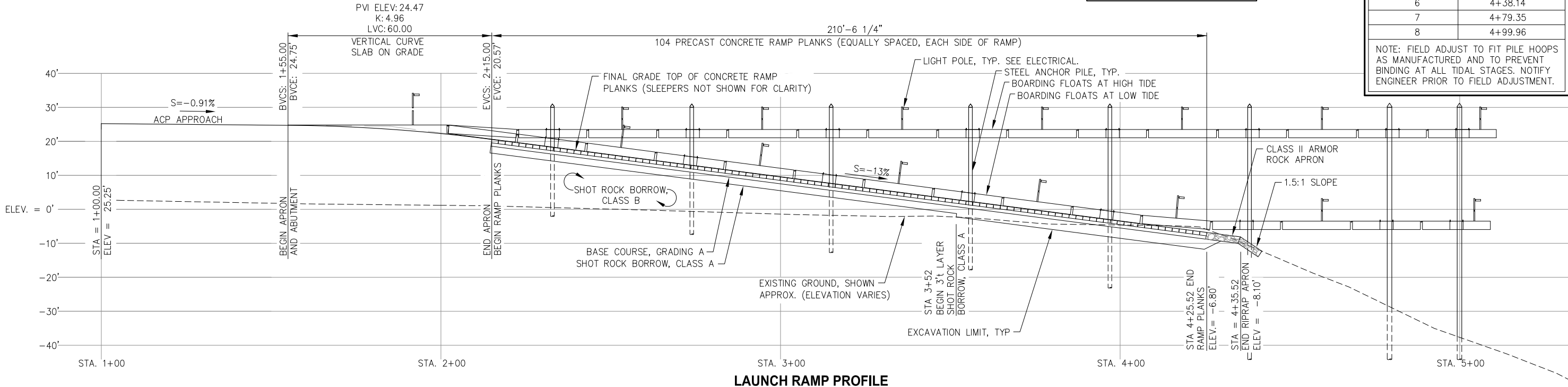
**1.05**  
SHEET  
5 OF 82



BOAT LAUNCH RAMP LAYOUT POINTS				
WORK PT.	NORTHING	EASTING	ELEV.	DESCRIPTION
B1	510714.35	485010.25	24.75'	STA 1+55 @ BEGIN C.I.P. ABUTMENT
B2	510484.24	484869.40	-6.80'	STA 4+25.52 @ END RAMP PLANK

PRELIMINARY ANCHOR PILE SCHEDULE	
PILE NO.	STATION
1	2+32.86
2	2+73.90
3	3+14.94
4	3+55.97
5	3+97.01
6	4+38.14
7	4+79.35
8	4+99.96

NOTE: FIELD ADJUST TO FIT PILE HOOPS AS MANUFACTURED AND TO PREVENT BINDING AT ALL TIDAL STAGES. NOTIFY ENGINEER PRIOR TO FIELD ADJUSTMENT.



REVISIONS					
REV.	DATE	DESCRIPTION	DWN.	CKD.	APP.

**PND ENGINEERS, INC.**  
 9360 Glacier Highway, Ste. 100  
 Juneau, Alaska 99801  
 Phone: 907-586-2093  
 Fax: 907-586-2099  
 www.pndengineers.com

DESIGN: TCB    CHECKED: CRS  
 DRAWN: PJD    APPROVED: CRS

SCALE: SCALE IN FEET  
 0    15    30 FT.



**CITY & BOROUGH OF JUNEAU, ALASKA**  
**STATTER HARBOR IMPROVEMENTS**  
 CONTRACT NO. DH14-014

SHEET TITLE: **BOAT LAUNCH RAMP PLAN AND PROFILE**

PND PROJECT NO.: 082015

**8.01**  
 SHEET 74 OF 82